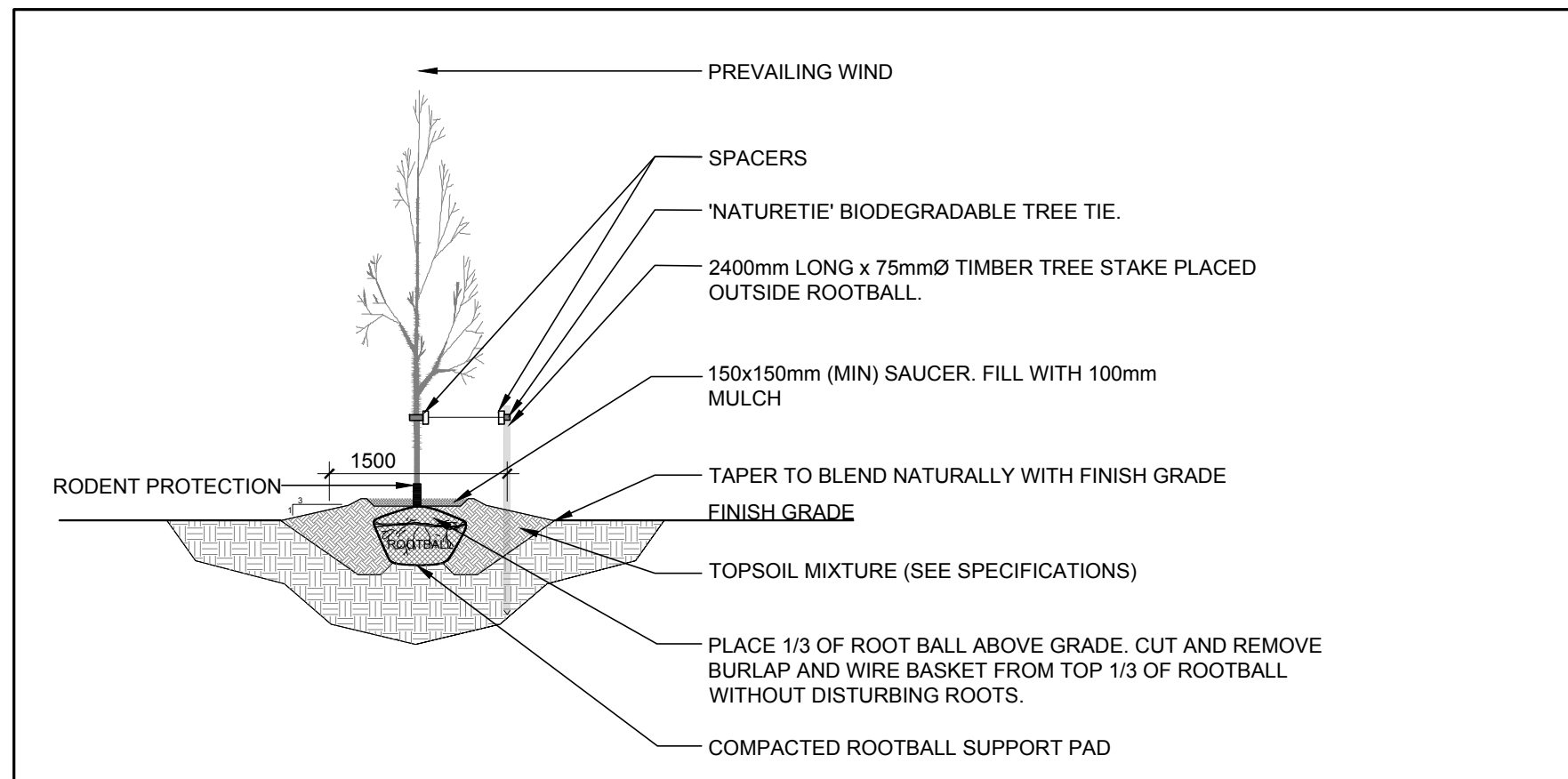


EXISTING TREE LIST						
KEY	QTY	BOTANICAL NAME	COMMON NAME	SIZE	CONDITION	REMARKS
TREES						
AP	2	<i>Acer platanoides</i>	Norway Maple	200-400mm dbh	Fair-good	To be removed
SR	1	<i>Syringa reticulata</i>	Japanese Tree Lilac	250mm dbh	Fair	To remain
UA	1	<i>Ulmus americana</i>	American Elm	100mm dbh	Poor	To be removed

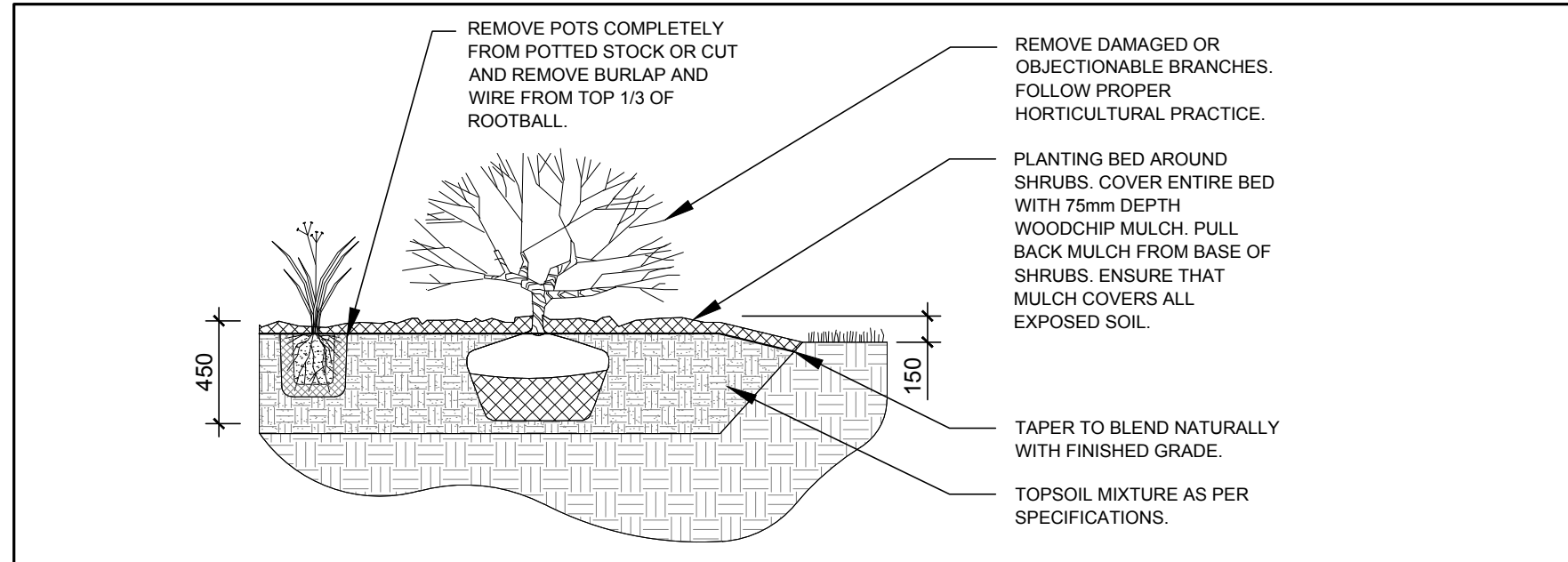
PROPOSED PLANT LIST						
KEY	QTY	BOTANICAL NAME	COMMON NAME	SIZE	CONDITION	REMARKS
DECIDUOUS TREES						
HB	1	<i>Celtis occidentalis</i>	Hackberry	60mm cal.	B&B	
JL	1	<i>Syringa reticulata</i>	Japanese Tree Lilac	60mm cal.	B&B	Single Leader
SB	2	<i>Amelanchier canadensis</i>	Serviceberry	60mm cal.	B&B	Single Leader
ORNAMENTAL GRASSES						
KF	7	<i>Calamagrostis x acutiflora</i> 'Karl Foerster'	Feather Reed Grass	250mm pot	Potted	Space 800mm o.c.

GENERAL NOTES:

- It is the responsibility of the appropriate contractor or official to report any errors, omissions or discrepancies on this plan with actual site conditions to the Landscape Architect before proceeding with construction.
- The contractor is to notify all utility companies and authorities prior to any excavation and ascertain locations of underground services.
- The contractor is to reinstate all areas and items damaged as a result of construction activity.
- The contractor is to comply with all pertinent codes and by-laws.
- The contractor is to maintain a positive surface run-off throughout the entire construction period.
- The Landscape Architect is not responsible for subsurface conditions.
- The contractor is to identify all existing trees to remain on site with the Landscape Architect prior to construction.
- The contractor is to stake the proposed location of all plant material in conjunction with the Landscape Architect prior to excavation.
- Minimum distances for selected deciduous trees are as follows:
 - Building Foundations 7.5m
 - Sidewalks 1.5m
 - Public Streets 2.5m
 - Underground Infrastructure 2.0m
- All trees within 1m of underground utility trenches are to be excavated by hand.
- Remove all protective wrapping from tree trunks after installation.
- Staking of trees shall only be performed if necessary.
- Ensure that mulch is pulled back a min. distance of 75mm from base of tree trunk.



2 DECIDUOUS TREE PLANTING
L.1 SCALE: NTS

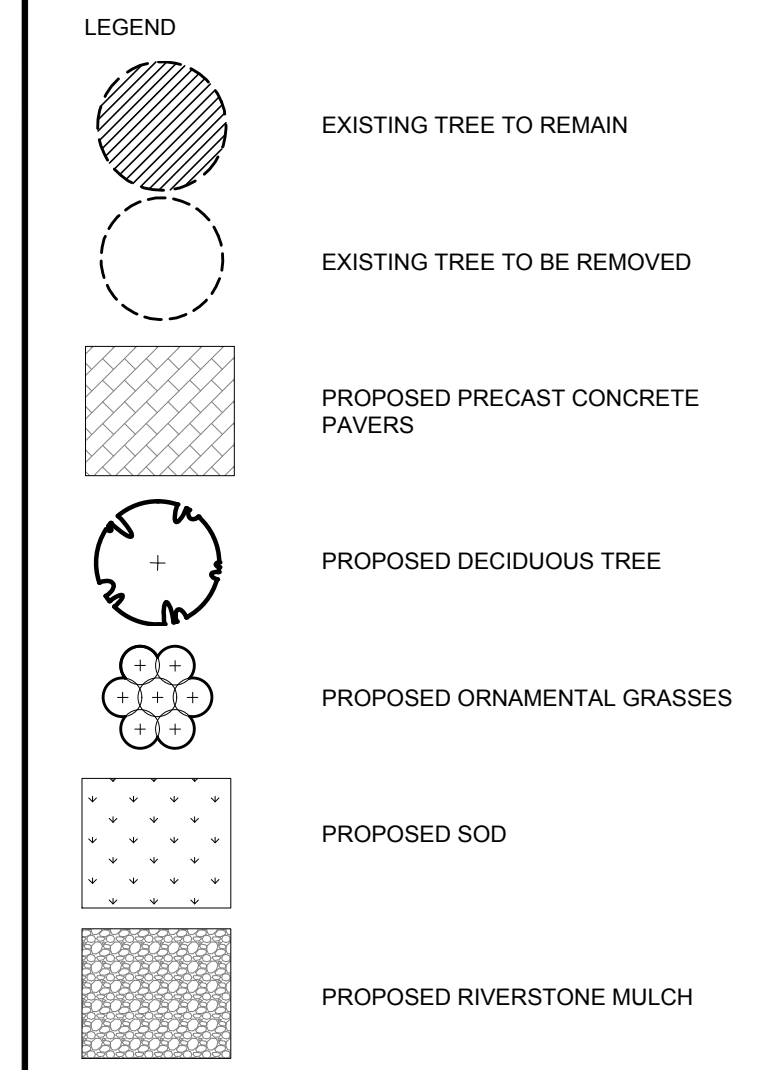


3 ORNAMENTAL GRASS PLANTING
L.1 SCALE: NTS

CLIENT
Mr. Jacques Hamel
Hamel Design Inc.
170 Main Street
Ottawa, Ontario K1S 1C2

CONSULTANTS
ARCHITECTS:
 HD
170 Main Street
Ottawa, On. K1S 1C2 DESIG
(613) 232-9081 Tel. AND
info@hamelplanning.com PLANNING

CIVIL ENGINEERS:
 T.L. MAK ENGINEERING CONSULTANTS LTD.
CONSULTING ENGINEERS



No.	Issue	Date	DR	CK
2	REVISED PER NEW SITE PLAN	11/23/2021	ML	JL
1	ISSUED FOR DISCUSSION AND REVIEW	10/15/2021	ML	JL

JAMES B. LENNOX & ASSOCIATES INC.
LANDSCAPE ARCHITECTS
3333 CARLING AVE. OTTAWA, ONTARIO K2H 5A8
Tel. (613) 722-5168 Fax. (1866) 343-3942

PROJECT
PROPOSED 3 STOREY +BASEMENT LOW RISE 4 UNIT APARTMENT BUILDING ADDITION
314 BELL STREET SOUTH, OTTAWA ON

DRAWING
TREE CONSERVATION REPORT & LANDSCAPE PLAN

STAMP

SCALE
AS SHOWN
START DATE
OCTOBER 2021
PROJECT NO.
21MS2166

PROJECT NORTH

DRAWING NO.
L.1
PLOT SIZE ARCH-D