

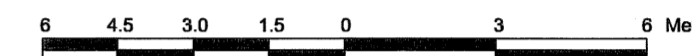
PART OF LOT D
REGISTERED PLAN 82717
CITY OF OTTAWA

Prepared by
ANNIS, O'SULLIVAN, VOLLEBEKK LTD.

Date: Jan. 13 2009
E.H. Herweyer O.L.S.

Revised to update southerly limit December 4, 2009
Revised to show building under construction March 23, 2010

Scale 1 : 150



Metric

DISTANCES SHOWN ON THIS PLAN ARE IN METRES AND
CAN BE CONVERTED TO FEET BY DIVIDING BY 0.3048

Notes & Legend

Symbol	Denotes
○ MH	Maintenance Hole (Combined)
— S —	Underground Combined Sewer
— W —	Underground Water
— G —	Underground Gas
— OHW —	Overhead Wires
○ PO-W	Wooden Pole
□ CB	Catch Basin
○ SP	Water Stand Post
Inv.	Invert
T/G	Top of Grate
⊙	Deciduous Tree
CLF	Chain Link Fence
∅	Diameter
+ 65.00	Location of Elevations
+ 65.00'	Location of Elevations (Top of Concrete Wall)
C/L	Centreline
—	Property Line

SITE AREA = 496.8 m²

NOTES

Topographic data was collected under Winter Conditions. Snow cover and ice preclude determining location and elevation of some topographical data that is otherwise visible.

ELEVATION NOTES

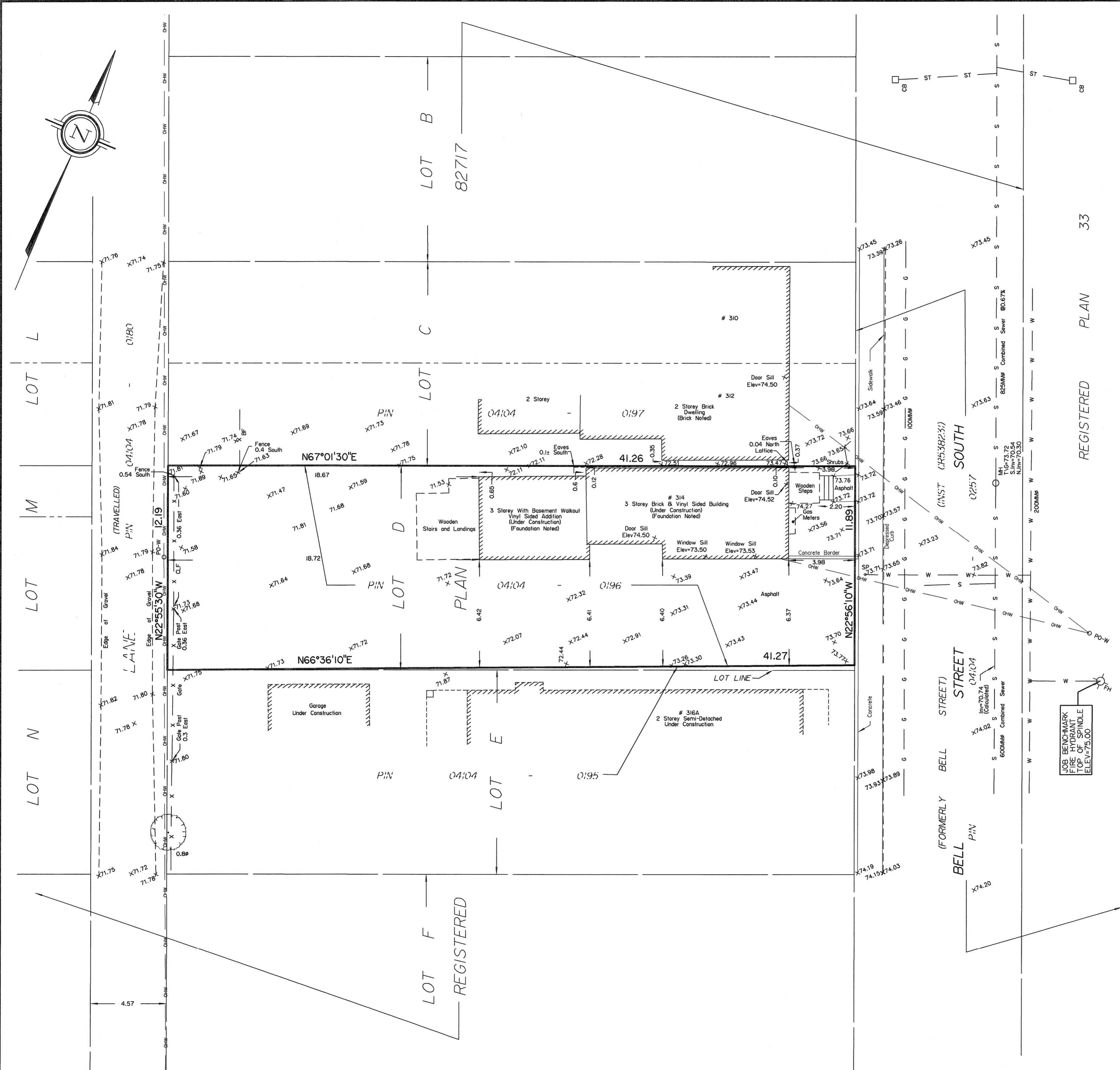
- Elevations shown are referred to geodetic datum.
- It is the responsibility of the user of this information to verify that the job benchmark has not been altered or disturbed and that its relative elevation and description agrees with the information shown on this drawing.

UTILITY NOTES

- This drawing cannot be accepted as acknowledging all of the utilities and it will be the responsibility of the user to contact the respective utility authorities for confirmation.
- Only visible surface utilities were located.
- A field location of underground plant by the pertinent utility authority is mandatory before any work involving breaking ground, probing, excavating etc.
- Underground utilities and inverts are taken from City of Ottawa Engineering drawing 2907 Sheet 4 of 18.

ANNIS, O'SULLIVAN, VOLLEBEKK LTD.
14 Concourse Gate, Suite 500
Nepean, Ont. K2E 7S6
Phone: (613) 727-0850 / Fax: (613) 727-1079
Email: Nepean@savilltd.com

Ontario Land Surveyors Job No. 9968-08 AFiloso P/LID PL82717 R-TP F3



Y:\2008\9968-08\AFiloso\08 AFiloso P/LID PL82717 R-TP F3.dwg, 2009/01/13 08:41:58 AM