

CARDINAL CREEK VILLAGE PHASE 5&6
 CITY FILE NO. D07-16-13-002 4PH5PH6
 PREPARED BY DSEL, MAY 2021.
 CONSTRUCTION COMPLETED.

CARDINAL CREEK VILLAGE PHASE 4
 CITY FILE NO. D07-16-13-002 4PH5PH6
 PREPARED BY DSEL, MAY 2021.
 CONSTRUCTION COMPLETED.








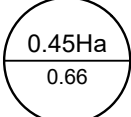
6.29Ha
 0.75
 TO EX. MH 2000
 PER CCV PH4

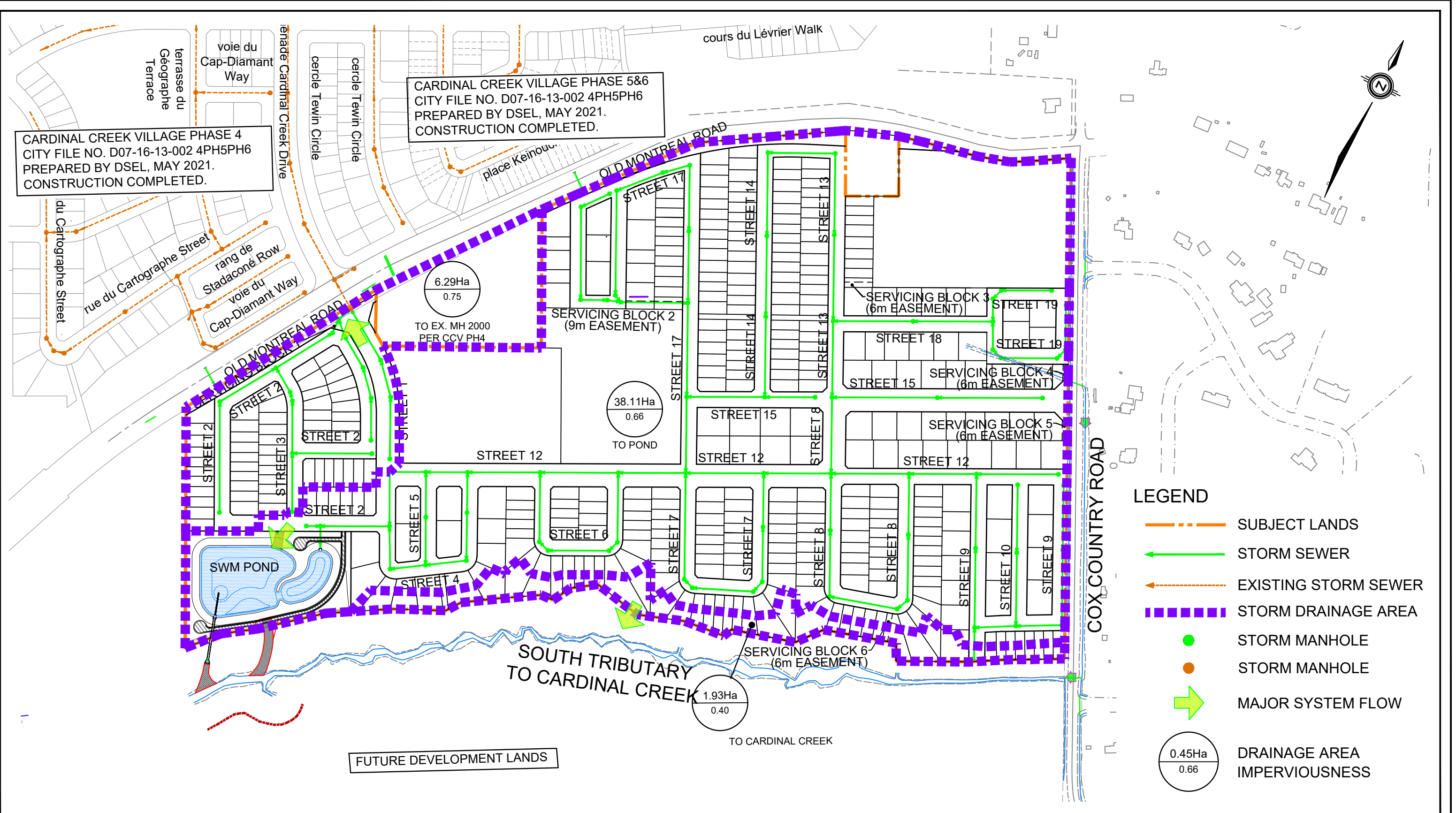
38.11Ha
 0.66
 TO POND

1.93Ha
 0.40
 TO CARDINAL CREEK

FUTURE DEVELOPMENT LANDS

LEGEND

-  SUBJECT LANDS
-  STORM SEWER
-  EXISTING STORM SEWER
-  STORM DRAINAGE AREA
-  STORM MANHOLE
-  STORM MANHOLE
-  MAJOR SYSTEM FLOW
-  DRAINAGE AREA IMPERVIOUSNESS



120 Iber Road, Unit 103
 Stittsville, ON K2S 1E9
 TEL: (613) 836-0856
 FAX: (613) 836-7183
 www.DSEL.ca

**POND DRAINAGE PLAN
 CARDINAL CREEK VILLAGE SOUTH**

PROJECT No.:	19-1153
SCALE:	1:4000
DATE:	DECEMBER 2021
FIGURE:	12