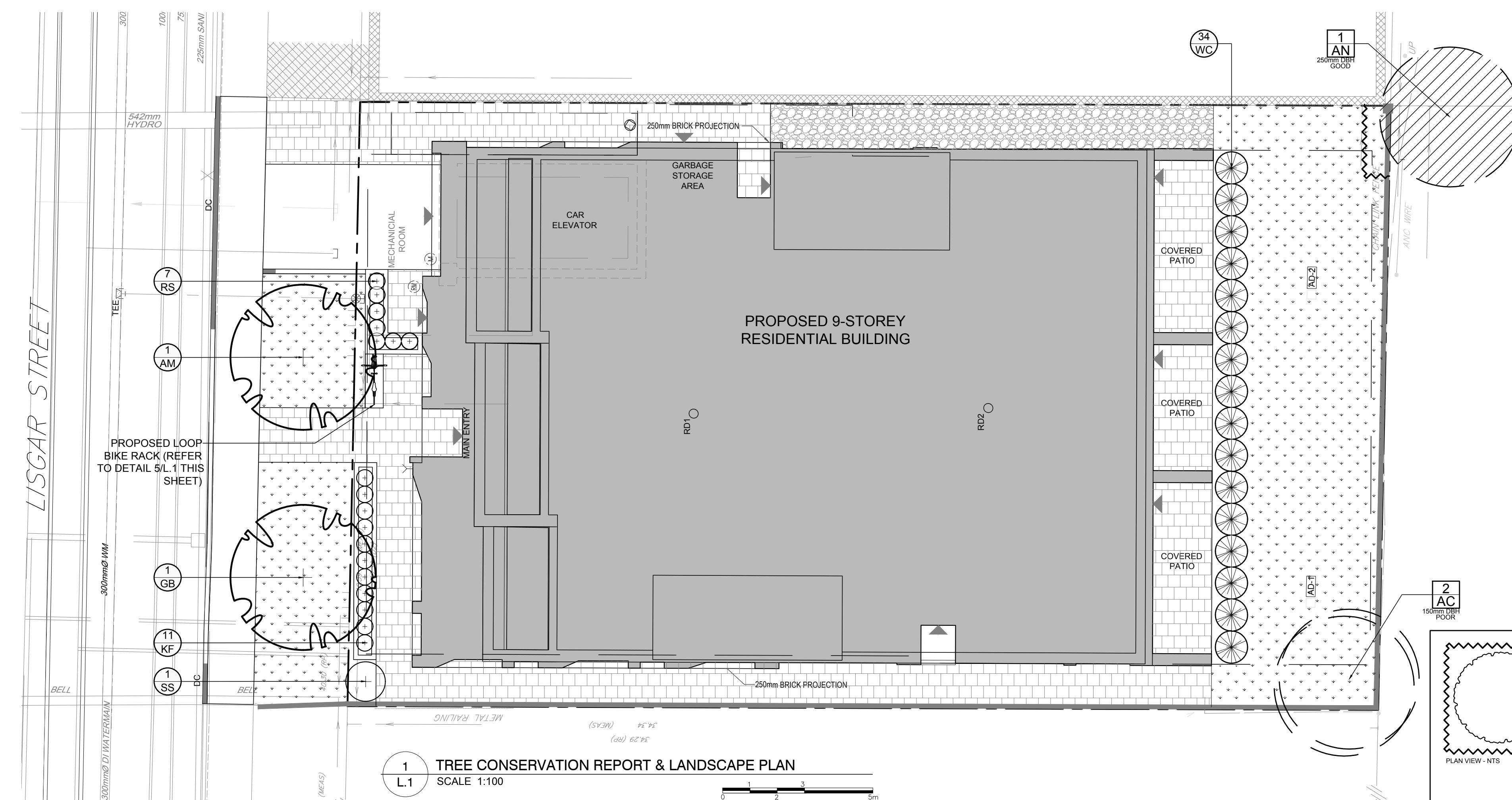


CLIENT:  
**230 LISGAR STREET INC.**

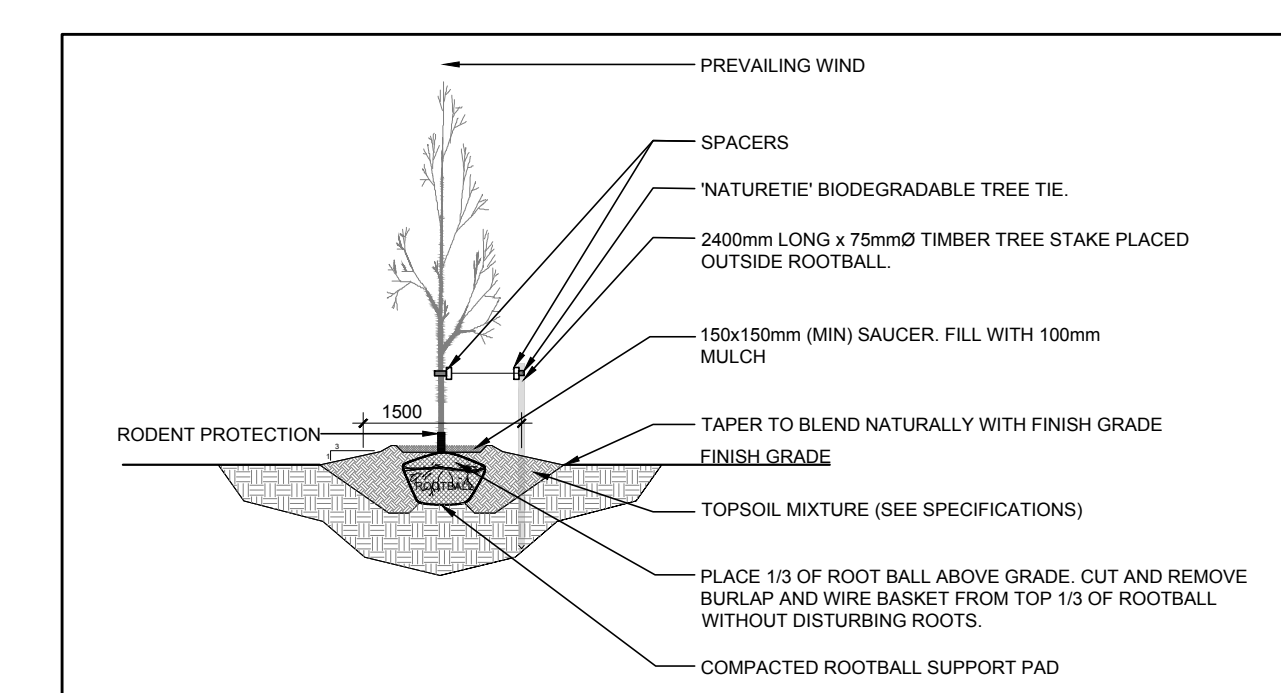
CONSULTANTS  
ARCHITECTS  
**project1 studio**  
Project1 Studio Incorporated  
(416) 844-9939 | info@project1studio.ca

CIVIL ENGINEERS  
**NOVATECH**  
Engineers, Planners & Landscape Architects  
Suite 200, 240 Michael Cowpland Drive  
Ottawa, Ontario, Canada K2M 1P6  
Telephone (613) 254-9643  
Facsimile (613) 254-5867  
Website www.novatech-eng.com

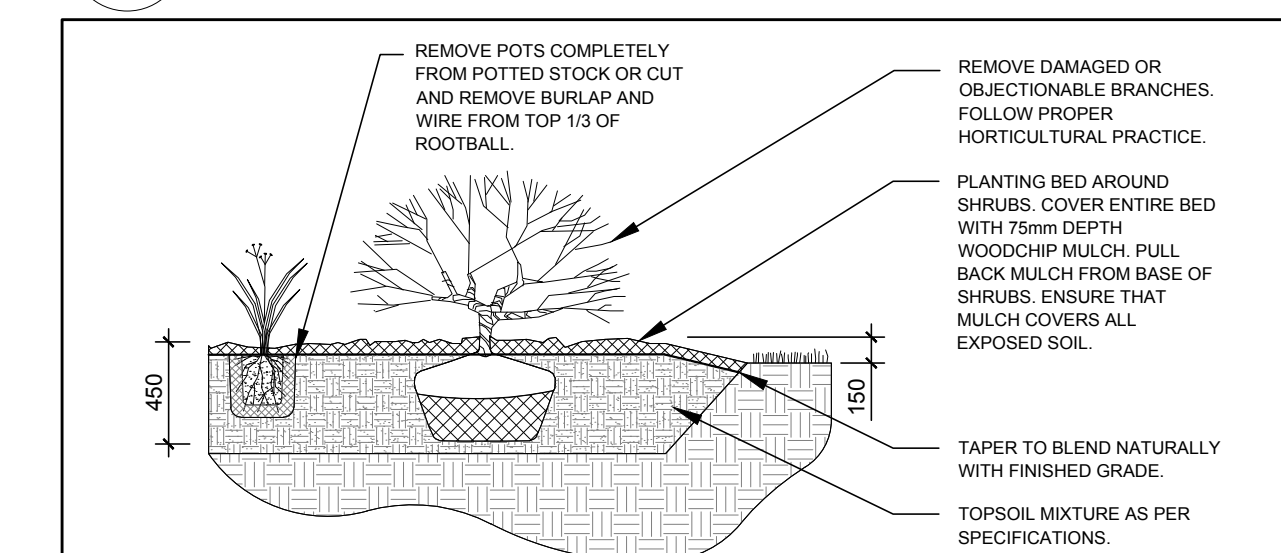
- LEGEND**
- PROPOSED DECIDUOUS TREE
  - PROPOSED SHRUBS / PERENNIALS
  - PROPOSED RIVERSTONE
  - PROPOSED SOD
  - PROPOSED PRECAST CONCRETE PAVERS
  - TREE PROTECTION FENCE
  - PROPOSED LOOP BIKE RACK
  - EXISTING TREE TO REMAIN
  - EXISTING TREE TO BE REMOVED



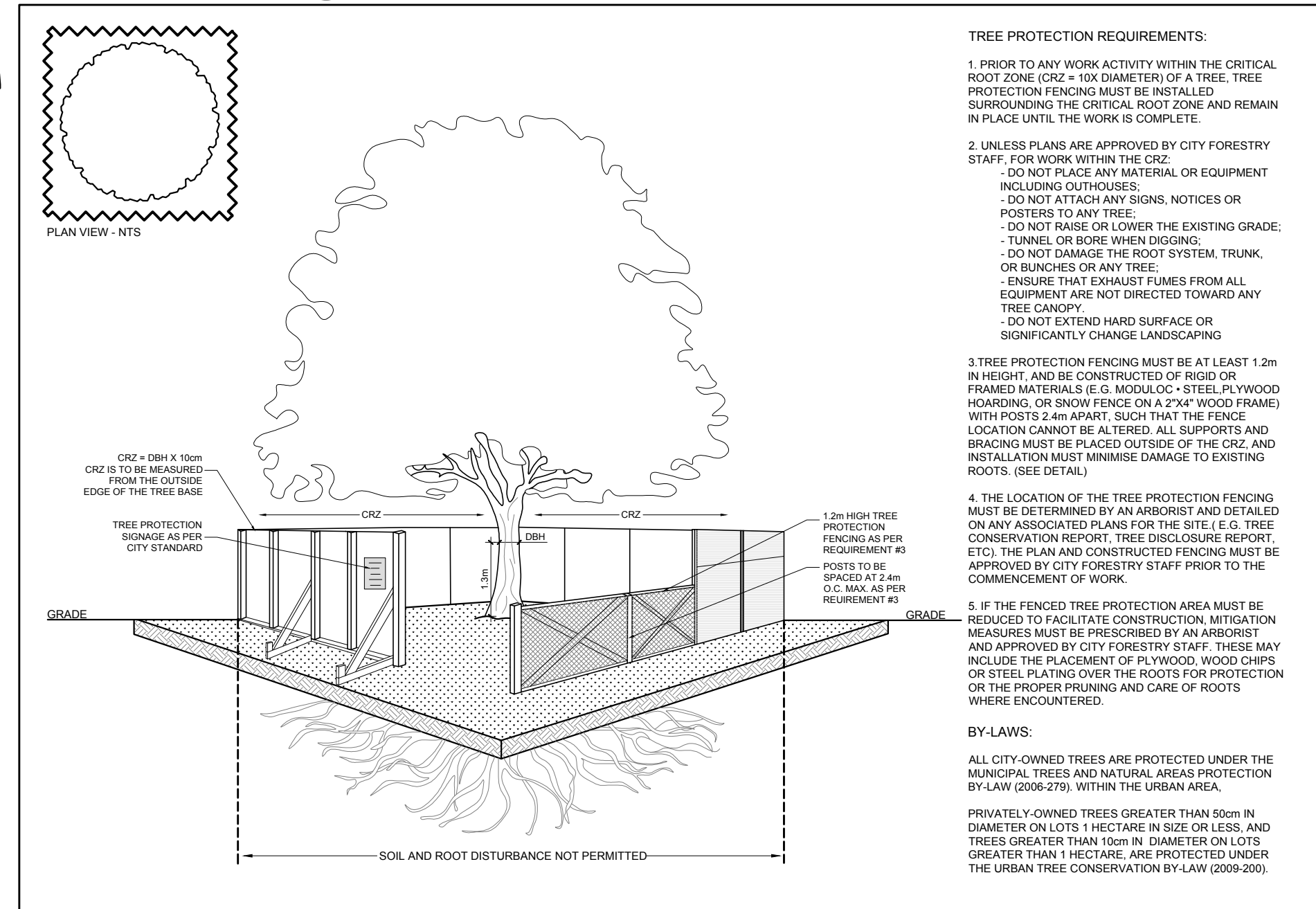
**1 TREE CONSERVATION REPORT & LANDSCAPE PLAN**  
SCALE 1:100



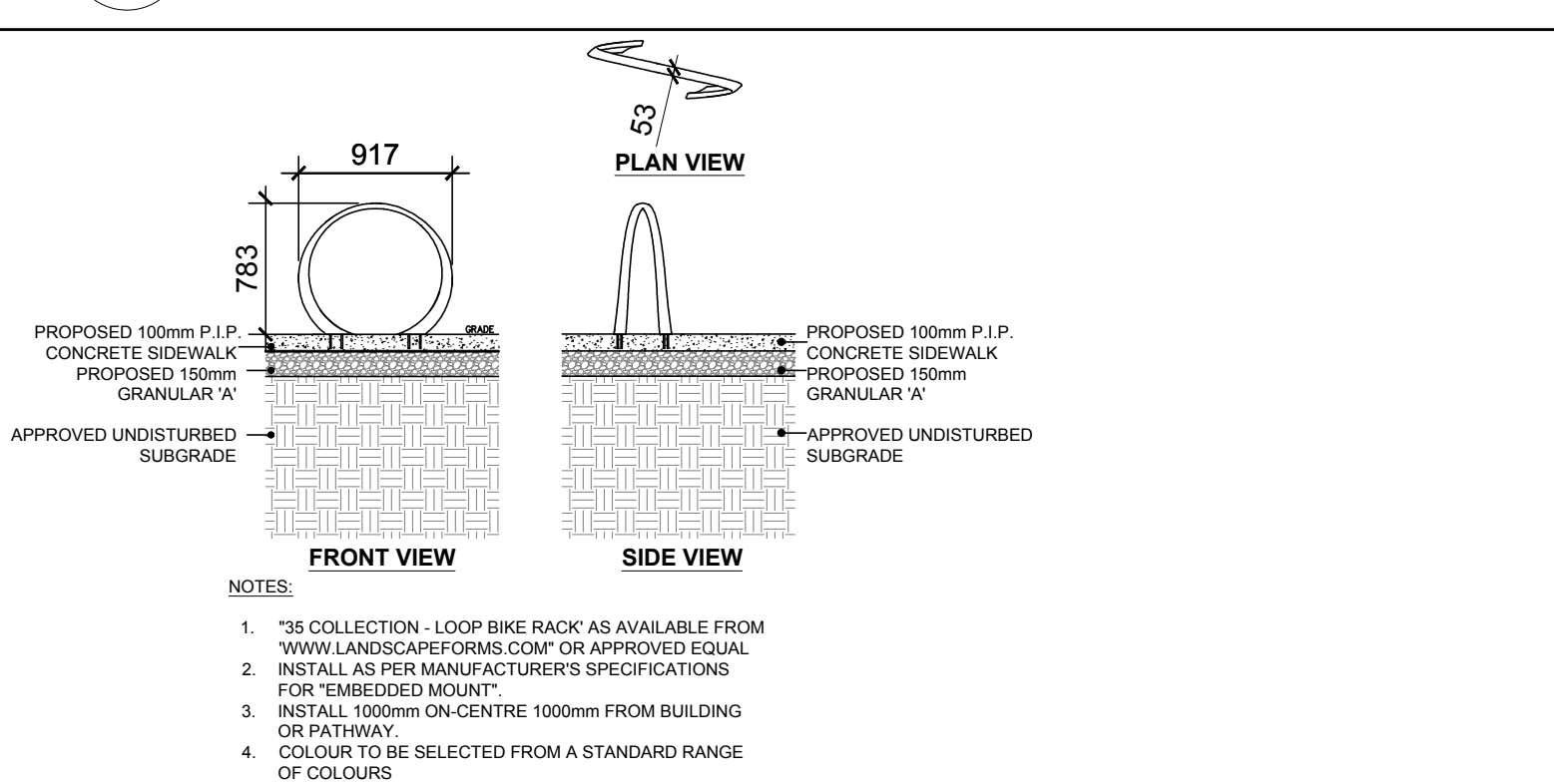
**2 DECIDUOUS TREE PLANTING**  
SCALE: NTS



**3 SHRUB / PERENNIAL PLANTING**  
SCALE: NTS



**4 TREE PROTECTION FENCING**  
SCALE: NTS



**5 LOOP BIKE RACK**  
SCALE: NTS

- GENERAL NOTES:**
- It is the responsibility of the appropriate contractor or official to report any errors, omissions or discrepancies on this plan with actual site conditions to the Landscape Architect before proceeding with construction.
  - The contractor is to notify all utility companies and authorities prior to any excavation and ascertain locations of underground services.
  - The contractor is to reinstate all areas and items damaged as a result of construction activity.
  - The contractor is to comply with all pertinent codes and by-laws.
  - The contractor is to maintain a positive surface run-off throughout the entire construction period.
  - The Landscape Architect is not responsible for subsurface conditions.
  - The contractor is to identify all existing trees to remain on site with the Landscape Architect prior to construction.
  - The contractor is to stake the proposed location of all plant material in conjunction with the Landscape Architect prior to excavation.
  - Minimum distances for selected deciduous trees are as follows:
    - Building Foundations 7.5m
    - Sidewalks 1.5m
    - Public Streets 2.5m
    - Underground Infrastructure 2.0m
  - All trees within 1m of underground utility trenches are to be excavated by hand.
  - Remove all protective wrapping from tree trunks after installation.
  - Staking of trees shall only be performed if necessary.
  - Ensure that mulch is pulled back a min. distance of 75mm from base of tree trunk.

**EXISTING TREE LIST**

KEY	QTY	BOTANICAL NAME	COMMON NAME	SIZE	CONDITION	REMARKS
<b>TREES</b>						
AC	2	Amelanchier canadensis	Serviceberry	150mm DBH	Poor	To be removed
AN	1	Acer negundo	Manitoba Maple	250mm DBH	Good	To remain

**PROPOSED PLANT LIST**

KEY	QTY	BOTANICAL NAME	COMMON NAME	SIZE	CONDITION	REMARKS
<b>TREES</b>						
AM	1	Acer x freemanii 'Armstrong'	Armstrong Maple	60mm ø	B&B	
GB	1	Ginkgo biloba 'Princeton Sentry'	Princeton Sentry Ginkgo	60mm ø	B&B	Male tree
<b>SHRUBS</b>						
SS	1	Sorbaria sorbifolia	Ural False Spirea	800mm ht.	Potted	
WC	34	Thuja occidentalis 'Clumps'	White Cedar Clumps	1.5m Ht.	Bare root	3 trunks or more

**PERENNIALS AND ORNAMENTAL GRASSES**

KF	11	Calamagrostis 'Karl Foerster'	Feather Reed Grass	250mm pot	Potted	600mm o.c.
RS	7	Hemerocallis 'Ruby Stella'	Ruby Stella Daylily	100mm pot	Potted	400mm o.c.

No.	Issue	Date	ML	JL
1	ISSUED FOR SITE PLAN CONTROL	11/22/2022		

**JAMES B. LENOX & ASSOCIATES INC.**  
LANDSCAPE ARCHITECTS  
3332 CARLING AVE. OTTAWA, ONTARIO K2M 1S8  
Tel: (613) 722-5168 Fax: (866) 343-3942

PROJECT  
**PROPOSED NINE STOREY RESIDENTIAL BUILDING**  
230-232 LISGAR STREET, OTTAWA ON

DRAWING  
**TREE CONSERVATION REPORT & LANDSCAPE PLAN**

STAMP  
  
SCALE  
AS SHOWN  
START DATE  
SEPTEMBER 2022  
PROJECT NO.

PROJECT NORTH  
  
DRAWING NO.  
**L.1**  
PLOT SIZE ARCH-D