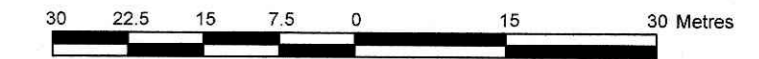


560 DEALERSHIP DRIVE
BEING PART OF LOT 17
CONCESSION 4 (RIDEAU FRONT)
GEOGRAPHIC TOWNSHIP OF NEPEAN
CITY OF OTTAWA

Prepared by Annis, O'Sullivan, Vollebek Ltd.
Field Work Completed December 23, 2020

Scale 1 : 750



Metric

DISTANCES SHOWN ON THIS PLAN ARE IN METRES AND
CAN BE CONVERTED TO FEET BY DIVIDING BY 0.3048

JAN 25 2021
Date
E. H. Herweyer
Ontario Land Surveyor

Notes & Legend

Denotes

- ⊙ FH = Fire Hydrant
- ⊠ T-P = Test Pit
- ⊙ W = Water Valve
- T/G = Top of Grate
- Inv.E = Invert East
- GE = Location of Ground Elevations
- BOS = Bottom of Slope
- TOS = Top of Slope
- SRW = Stone Retaining Wall
- EP = Edge of Pavement
- MF = Metal Fence
- PWF = Post and Wire Fence
- ⊙ FP = Flag Pole
- ⊙ LS = Light Standard
- ⊙ MH-ST = Maintenance Hole (Storm Sewer)
- ⊙ MH-S = Maintenance Hole (Sanitary)
- ST = Underground Storm Sewer
- S = Underground Sanitary Sewer
- W = Underground Water
- +65.00 = Location of Elevations
- +65.00 = Top of Wall Elevation
- = Property Line

Caution
This is NOT a Plan of Survey and shall not be used except for the purpose indicated in the title block.

SITE AREA = 6.3237 Ha.

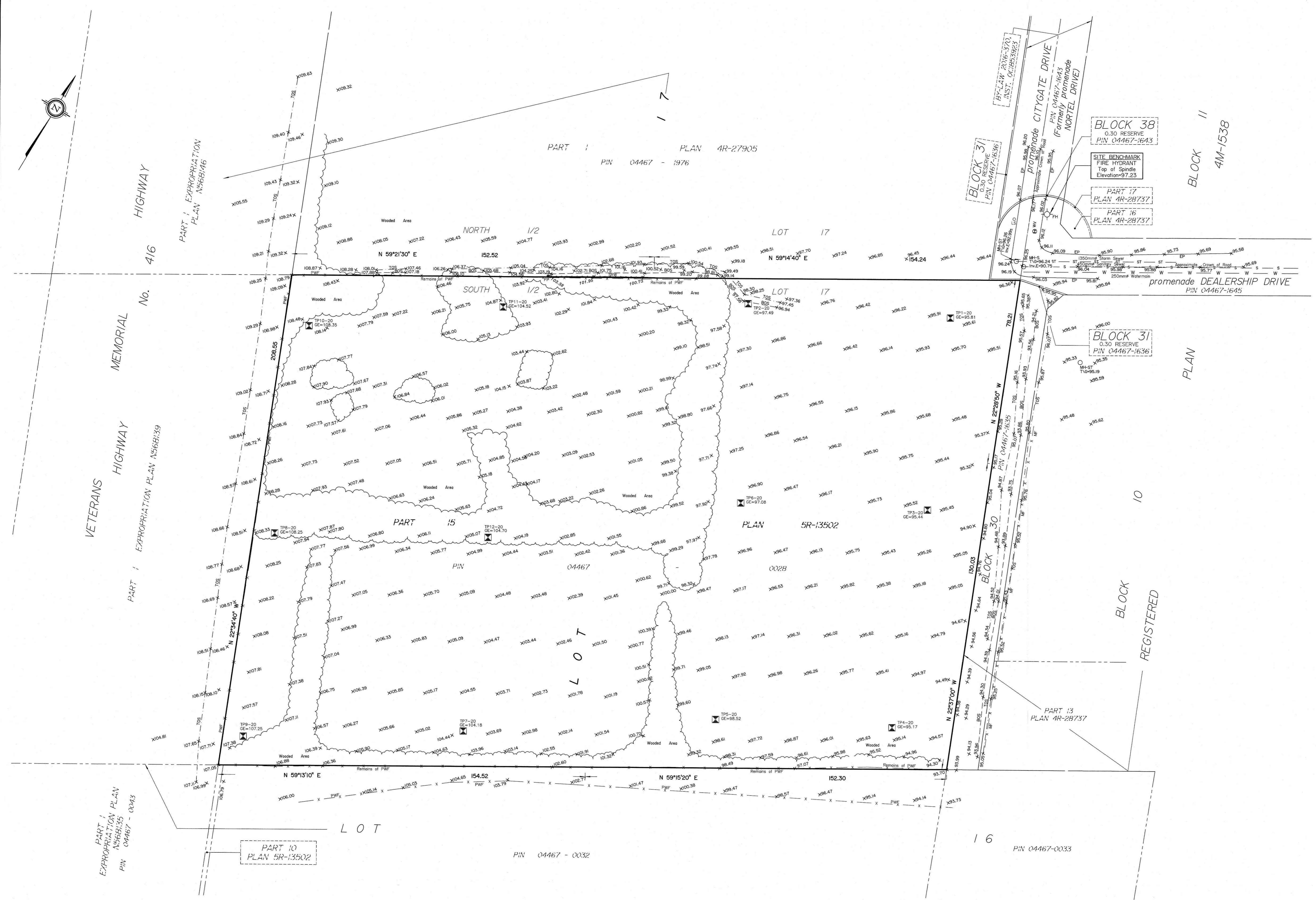
BOUNDARY INFORMATION COMPILED FROM
REGISTERED PLAN 4M-1538, PLANS 4R-27905, 5R-13502
AND SURVEY RECORDS.

ELEVATION NOTES

1. Elevations shown are geodetic and are referred to the CGVD28 geodetic datum, derived from control monument No. 00820118014, having a published elevation of 103.306m.
2. It is the responsibility of the user of this information to verify that the job benchmark has not been altered or disturbed and that its relative elevation and description agrees with the information shown on this drawing.

UTILITY NOTES

1. This drawing cannot be accepted as acknowledging all of the utilities and it will be the responsibility of the user to contact the respective utility authorities for confirmation.
2. Only visible surface utilities were located.
3. A field location of underground plant by the pertinent utility authority is mandatory before any work involving breaking ground, probing, excavating etc.
4. Sanitary and Storm Sewer grades and inverts were taken from a Plan by Farley, Smith & Denis Surveying Ltd. dated June 9, 2018.
5. Underground Utility Data derived from City of Ottawa utility sheet drawing no. 109203-CG-P5 & 109203-CG-P6.



PART 1
EXPROPRIATION PLAN
N5668/46
PIN 04467-0043

PART 10
PLAN 5R-13502

PART 1
EXPROPRIATION PLAN N5668/39

PART 1
EXPROPRIATION PLAN N5668/46

Highway No. 416

VETERANS MEMORIAL HIGHWAY

PART 13
PLAN 4R-28737

LOT 16
PIN 04467-0033

LOT 15
PIN 04467-0028

LOT 17
PIN 04467-1976

LOT 17
CONCESSION 4 (RIDEAU FRONT)

GEOGRAPHIC TOWNSHIP OF NEPEAN

CITY OF OTTAWA