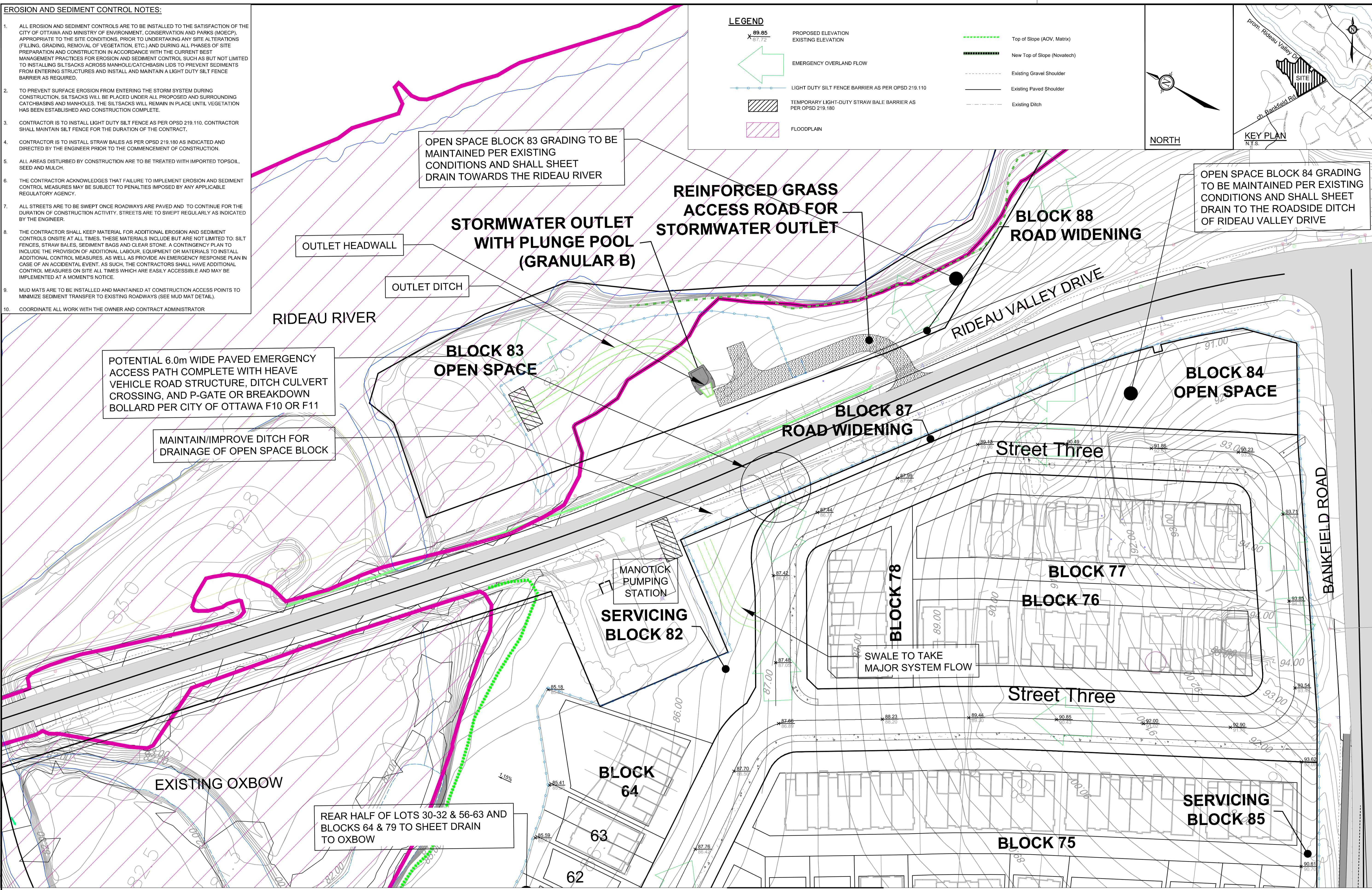
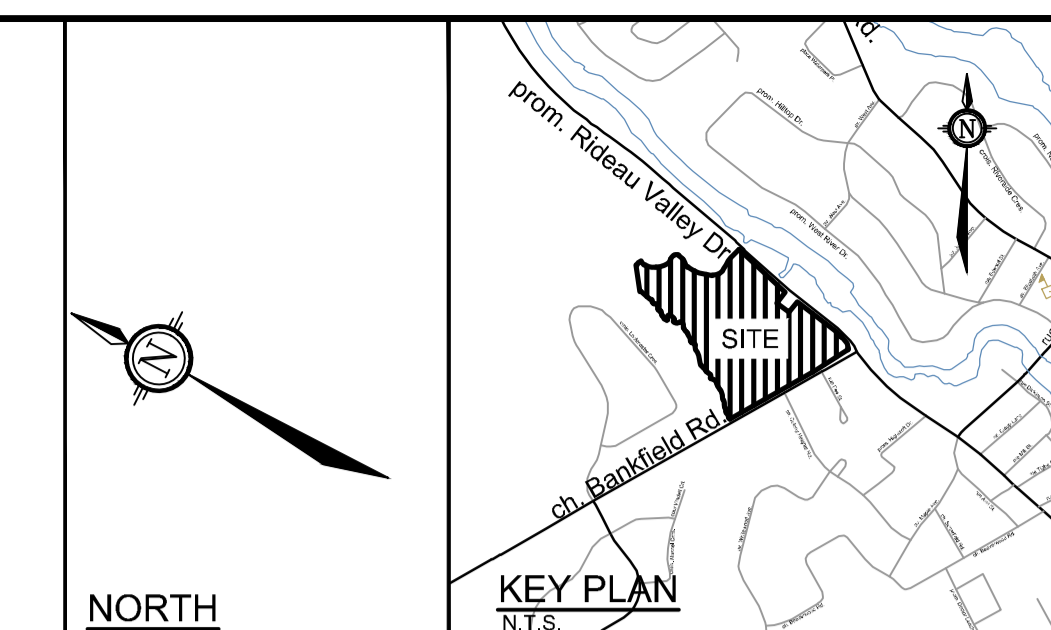


EROSION AND SEDIMENT CONTROL NOTES:

- ALL EROSION AND SEDIMENT CONTROLS ARE TO BE INSTALLED TO THE SATISFACTION OF THE CITY OF OTTAWA AND MINISTRY OF ENVIRONMENT, CONSERVATION AND PARKS (MECP), APPROPRIATE TO THE SITE CONDITIONS, PRIOR TO UNDERTAKING ANY SITE ALTERATIONS (FILLING, GRADING, REMOVAL OF VEGETATION, ETC.) AND DURING ALL PHASES OF SITE PREPARATION AND CONSTRUCTION IN ACCORDANCE WITH THE CURRENT BEST MANAGEMENT PRACTICES FOR EROSION AND SEDIMENT CONTROL SUCH AS BUT NOT LIMITED TO INSTALLING SILTSACKS ACROSS MANHOLE/CATCHBASIN LIDS TO PREVENT SEDIMENTS FROM ENTERING STRUCTURES AND INSTALL AND MAINTAIN A LIGHT DUTY SILT FENCE BARRIER AS REQUIRED.
- TO PREVENT SURFACE EROSION FROM ENTERING THE STORM SYSTEM DURING CONSTRUCTION, SILTSACKS WILL BE PLACED UNDER ALL PROPOSED AND SURROUNDING CATCHBASINS AND MANHOLES. THE SILTSACKS WILL REMAIN IN PLACE UNTIL VEGETATION HAS BEEN ESTABLISHED AND CONSTRUCTION COMPLETE.
- CONTRACTOR IS TO INSTALL LIGHT DUTY SILT FENCE AS PER OPSD 219.110. CONTRACTOR SHALL MAINTAIN SILT FENCE FOR THE DURATION OF THE CONTRACT.
- CONTRACTOR IS TO INSTALL STRAW BALES AS PER OPSD 219.180 AS INDICATED AND DIRECTED BY THE ENGINEER PRIOR TO THE COMMENCEMENT OF CONSTRUCTION.
- ALL AREAS DISTURBED BY CONSTRUCTION ARE TO BE TREATED WITH IMPORTED TOPSOIL, SEED AND MULCH.
- THE CONTRACTOR ACKNOWLEDGES THAT FAILURE TO IMPLEMENT EROSION AND SEDIMENT CONTROL MEASURES MAY BE SUBJECT TO PENALTIES IMPOSED BY ANY APPLICABLE REGULATORY AGENCY.
- ALL STREETS ARE TO BE SWEEPED ONCE ROADWAYS ARE PAVED AND TO CONTINUE FOR THE DURATION OF CONSTRUCTION ACTIVITY. STREETS ARE TO BE SWEEPED REGULARLY AS INDICATED BY THE ENGINEER.
- THE CONTRACTOR SHALL KEEP MATERIAL FOR ADDITIONAL EROSION AND SEDIMENT CONTROL ON-SITE AT ALL TIMES. THESE MATERIALS INCLUDE BUT ARE NOT LIMITED TO: SILT FENCES, STRAW BALES, SEDIMENT BAGS AND CLEAR STONE. A CONTINGENCY PLAN TO INCLUDE THE PROVISION OF ADDITIONAL LABOUR, EQUIPMENT OR MATERIALS TO INSTALL ADDITIONAL CONTROL MEASURES, AS WELL AS PROVIDE AN EMERGENCY RESPONSE PLAN IN CASE OF AN ACCIDENTAL EVENT, AS SUCH, THE CONTRACTORS SHALL HAVE ADDITIONAL CONTROL MEASURES ON-SITE AT ALL TIMES WHICH ARE EASILY ACCESSIBLE AND MAY BE IMPLEMENTED AT A MOMENT'S NOTICE.
- MUD MATS ARE TO BE INSTALLED AND MAINTAINED AT CONSTRUCTION ACCESS POINTS TO MINIMIZE SEDIMENT TRANSFER TO EXISTING ROADWAYS (SEE MUD MAT DETAIL).
- COORDINATE ALL WORK WITH THE OWNER AND CONTRACT ADMINISTRATOR

LEGEND

- PROPOSED ELEVATION
- EXISTING ELEVATION
- EMERGENCY OVERLAND FLOW
- LIGHT DUTY SILT FENCE BARRIER AS PER OPSD 219.110
- TEMPORARY LIGHT-DUTY STRAW BALE BARRIER AS PER OPSD 219.180
- FLOODPLAIN
- Top of Slope (AOV, Matrix)
- New Top of Slope (Novatech)
- Existing Gravel Shoulder
- Existing Paved Shoulder
- Existing Ditch



POTENTIAL 6.0m WIDE PAVED EMERGENCY ACCESS PATH COMPLETE WITH HEAVE VEHICLE ROAD STRUCTURE, DITCH CULVERT CROSSING, AND P-GATE OR BREAKDOWN BOLLARD PER CITY OF OTTAWA F10 OR F11

MAINTAIN/IMPROVE DITCH FOR DRAINAGE OF OPEN SPACE BLOCK

OPEN SPACE BLOCK 83 GRADING TO BE MAINTAINED PER EXISTING CONDITIONS AND SHALL SHEET DRAIN TOWARDS THE RIDEAU RIVER

OPEN SPACE BLOCK 84 GRADING TO BE MAINTAINED PER EXISTING CONDITIONS AND SHALL SHEET DRAIN TO THE ROADSIDE DITCH OF RIDEAU VALLEY DRIVE

REAR HALF OF LOTS 30-32 & 56-63 AND BLOCKS 64 & 79 TO SHEET DRAIN TO OXBOW

SEE DRAWING No. 121153-GR2

NOTE:
THE POSITION OF ALL POLE LINES, CONDUITS, WATERMANS, SEWERS AND OTHER UNDERGROUND AND OVERGROUND UTILITIES AND STRUCTURES IS NOT NECESSARILY SHOWN ON THE CONTRACT DRAWINGS, AND WHERE SHOWN, THE ACCURACY OF THE POSITION OF SUCH UTILITIES AND STRUCTURES IS NOT GUARANTEED. BEFORE STARTING WORK, DETERMINE THE EXACT LOCATION OF ALL SUCH UTILITIES AND STRUCTURES AND ASSUME ALL LIABILITY FOR DAMAGE TO THEM.

No.	REVISION	DATE	BY
3.	ISSUED FOR RE-SUBMISSION REVIEW	AUG 08/24	BHB
2.	ISSUED FOR RE-SUBMISSION REVIEW	APR 11/24	BHB
1.	ISSUED FOR REVIEW	JAN 6/23	BHB

DESIGN	SCALE
BPR	1:500
BHB	1:500
BPR	1:500
BHB	1:500
BHB	1:500

FOR REVIEW ONLY	
CHECKED	BPR
CHECKED	BHB
CHECKED	BPR
CHECKED	BHB
APPROVED	BHB

NOVATECH
Engineers, Planners & Landscape Architects
Suite 200, 240 Michael Cowpland Drive
Ottawa, Ontario, Canada K2M 1P6
Telephone: (613) 254-9643
Facsimile: (613) 254-5867
Website: www.novatech-eng.com

LOCATION
CITY OF OTTAWA
STINSON LANDS SUBDIVISION

DRAWING NAME
**CONCEPTUAL GRADING,
EROSION, & SEDIMENT CONTROL
PLAN**

PROJECT No.
121153-00

REV #3

DRAWING No.
121153-GR1