

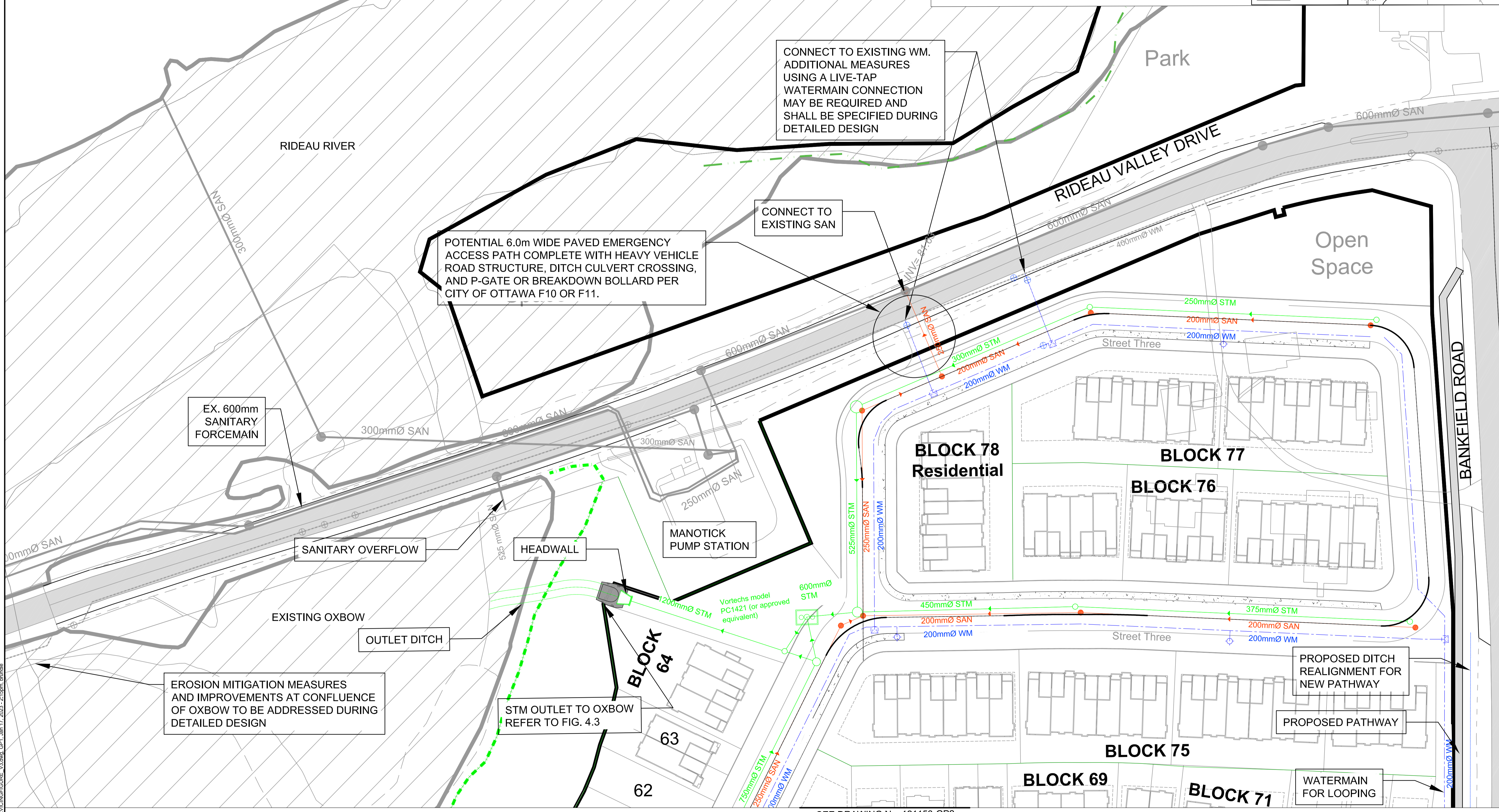
Existing Residential

LEGEND

- EXISTING WATERMAIN
- PROPOSED WATERMAIN
- PROPOSED HYDRANT
- EXISTING SANITARY SEWER
- PROPOSED SANITARY SEWER
- PROPOSED STORM SEWER
- FLOODPLAIN
- Top of Slope (AOV, Matrix)
- New Top of Slope (Novatech)
- Existing Gravel Shoulder
- Existing Paved Shoulder
- Existing Ditch

NORTH

KEY PLAN
N.T.S.



NOTE:
THE POSITION OF ALL POLE LINES, CONDUITS, WATERMANS, SEWERS AND OTHER UNDERGROUND AND OVERGROUND UTILITIES AND STRUCTURES IS NOT NECESSARILY SHOWN ON THE CONTRACT DRAWINGS, AND WHERE SHOWN, THE ACCURACY OF THE POSITION OF SUCH UTILITIES AND STRUCTURES IS NOT GUARANTEED. BEFORE STARTING WORK, DETERMINE THE EXACT LOCATION OF ALL SUCH UTILITIES AND STRUCTURES AND ASSUME ALL LIABILITY FOR DAMAGE TO THEM.

No.	REVISION	DATE	BY
1.	ISSUED FOR REVIEW	JAN 6/23	BHB

SCALE

1:500

0 5 10 15 20

DESIGN

BPR

CHECKED

BHB

DRAWN

BPR

CHECKED

BHB

APPROVED

BHB

FOR REVIEW ONLY

PROFESSIONAL ENGINEER
B. H. BAHIA
100164647
Jan 16, 2023
PROVINCE OF ONTARIO

NOVATECH
Engineers, Planners & Landscape Architects
Suite 200, 240 Michael Cowpland Drive
Ottawa, Ontario, Canada K2M 1P6
Telephone (613) 254-9643
Facsimile (613) 254-5867
Website www.novatech-eng.com

LOCATION
CITY OF OTTAWA
STINSON LANDS SUBDIVISION

DRAWING NAME
CONCEPTUAL GENERAL PLAN OF SERVICES

PROJECT No. 121153-00
REV 1
DRAWING No. 121153-GP1