

2 LOCATION PLAN
SCALE: NTS

SURVEY INFO
PART OF LOT 31, REGISTERED PLAN 126 &
PART OF LOT 20, CONCESSION 1 AND
PART OF BLOCK 2, REGISTERED PLAN 118
CITY OF OTTAWA

PREPARED BY ANNIS, O'SULLIVAN, VOLLEBEKK LTD.
FIELD WORK COMPLETED ON NOVEMBER 24, 2021

| SITE PLAN SYMBOLS LEGEND | |
|--------------------------|--------------------------------------|
| | BUILDING ENTRANCE |
| | BUILDING EXIT |
| | BICYCLE PARKING |
| | PROPERTY LINE |
| | SETBACK LINE |
| | OVERHEAD WIRES |
| | INTERLOCKING STONE PAVERS |
| | EXISTING TRAFFIC SIGNAL POST |
| | FIRE DEPARTMENT CONNECTION |
| | FIRE HYDRANT |
| | NEW STREET LIGHT |
| | STREET LIGHT TO BE REMOVED |
| | EXISTING STREET LIGHT TO REMAIN |
| | EXISTING UTILITY POLE TO REMAIN |
| | UTILITY POLE TO BE REMOVED/RELOCATED |
| | RAISED PLANTER |

- SITE PLAN NOTES**
- S1 ASPHALT
 - S2 EXISTING STRUCTURE TO BE DEMOLISHED
 - S3 CONCRETE SIDEWALK
 - S4 SOFT LANDSCAPING
 - S5 DEPRESSED CURB
 - S6 LINE OF CANOPY ABOVE
 - S7 3m x 9m CORNER SIGHT TRIANGLE
 - S8 CURB TRANSITION
 - S9 CONCRETE RAMP
 - S10 PLANTING BED

- GENERAL ARCHITECTURAL NOTES:**
- This drawing is the property of the Architect and may not be reproduced or used without the expressed consent of the Architect.
 - Drawings are not to be scaled. The Contractor is responsible for checking and verifying all levels and dimensions and shall report all discrepancies to the Architect and obtain clarification prior to commencing work.
 - Upon notice in writing, the Architect will provide written clarification or supplementary information regarding the intent of the Contract Documents.
 - The Architectural drawings are to be read in conjunction with all other Contract Documents including Project Manuals and the Structural, Mechanical and Electrical Drawings.
 - Positions of proposed or finished Mechanical or Electrical devices, fittings and fixtures are indicated on the Architectural Drawings. Locations shown on the Architectural Drawings shall govern over Mechanical and Electrical Drawings. Mechanical and Electrical items not clearly located will be located as directed by the Architect.
 - These documents are not to be used for construction unless specifically noted for such purpose.



1 SITE PLAN
SCALE: 1 : 200

1 ISSUED FOR ZONING BY-LAW AMEND. 2025-04-10

ISSUE RECORD



project1 studio

Project1 Studio Incorporated
(613) 884-9339 | mail@project1studio.ca

1765 MONTREAL RD
1765 Montreal Road
Ottawa, ON

| PROJ | SCALE | DRAWN | REVIEWED |
|------|-------|-------|----------|
| 2107 | NOTED | BH | JH |

SITE PLAN

SP-01

| UNIT COUNT | | | | | | | | | | | | | | | | | | | | | | | | | |
|-------------|--------|--------|--------|--------|--------|--------|--------|--------|--------|--------|--------|--------|--------|--------|--------|--------|--------|-------------|------------|--|--|--|--|--|--|
| NAME | LVL 01 | LVL 02 | LVL 03 | LVL 04 | LVL 05 | LVL 06 | LVL 07 | LVL 08 | LVL 09 | LVL 10 | LVL 11 | LVL 12 | LVL 13 | LVL 14 | LVL 15 | LVL 16 | LVL 17 | TOTAL COUNT | PERCENTAGE | | | | | | |
| 1-BED | 6 | 10 | 10 | 10 | 9 | 9 | 6 | 7 | 7 | 7 | 7 | 7 | 7 | 7 | 7 | 7 | 7 | 130 | 40% | | | | | | |
| 1-BED + DEN | 12 | 10 | 10 | 10 | 8 | 8 | 0 | 1 | 1 | 1 | 1 | 1 | 1 | 1 | 1 | 1 | 1 | 68 | 21% | | | | | | |
| 2-BED | 12 | 14 | 14 | 14 | 9 | 10 | 2 | 3 | 3 | 3 | 3 | 3 | 3 | 3 | 3 | 3 | 3 | 144 | 32% | | | | | | |
| 2-BED + DEN | 0 | 0 | 0 | 0 | 2 | 2 | 0 | 0 | 0 | 0 | 0 | 0 | 0 | 0 | 0 | 0 | 0 | 4 | 1% | | | | | | |
| STUDIO | 6 | 4 | 4 | 4 | 0 | 0 | 0 | 0 | 0 | 0 | 0 | 0 | 0 | 0 | 0 | 0 | 0 | 18 | 6% | | | | | | |
| TOTAL | 36 | 38 | 38 | 38 | 28 | 29 | 8 | 11 | 11 | 11 | 11 | 11 | 11 | 11 | 11 | 11 | 11 | 325 | 100% | | | | | | |

BLDG 'B' UNIT BREAKDOWN

| NO. | BEDS | AREA | AREA (SF) |
|----------|-------------|----------|------------|
| LEVEL 01 | | | |
| B101 | 1-BED + DEN | 66.49 m² | 715.64 ft² |
| B102 | STUDIO | 45.91 m² | 494.22 ft² |
| B103 | 2-BED | 86.11 m² | 926.92 ft² |
| B104 | 2-BED | 88.15 m² | 948.86 ft² |
| B105 | 2-BED | 84.11 m² | 905.36 ft² |
| B106 | 1-BED | 57.69 m² | 620.96 ft² |
| B107 | 1-BED + DEN | 66.74 m² | 718.36 ft² |
| B108 | 1-BED + DEN | 68.51 m² | 737.46 ft² |
| B109 | 1-BED + DEN | 68.27 m² | 734.80 ft² |
| B110 | 1-BED + DEN | 66.87 m² | 719.73 ft² |
| B111 | 1-BED + DEN | 65.52 m² | 705.29 ft² |
| B112 | 2-BED | 87.47 m² | 941.48 ft² |
| B113 | 2-BED | 79.26 m² | 853.09 ft² |
| B114 | STUDIO | 47.22 m² | 508.25 ft² |
| B115 | STUDIO | 47.17 m² | 507.77 ft² |
| B116 | 2-BED | 79.26 m² | 853.09 ft² |
| B117 | 2-BED | 73.75 m² | 793.81 ft² |
| B118 | 1-BED | 55.29 m² | 595.17 ft² |

| | | | |
|----------|-------------|----------|------------|
| LEVEL 02 | | | |
| B201 | 1-BED | 54.66 m² | 588.30 ft² |
| B202 | 1-BED | 61.67 m² | 663.84 ft² |
| B203 | 1-BED | 54.91 m² | 591.05 ft² |
| B204 | 2-BED | 85.79 m² | 923.40 ft² |
| B205 | 2-BED | 88.15 m² | 948.86 ft² |
| B206 | 2-BED | 84.11 m² | 905.36 ft² |
| B207 | 1-BED | 57.69 m² | 620.96 ft² |
| B208 | 1-BED + DEN | 66.74 m² | 718.36 ft² |
| B209 | 1-BED + DEN | 68.51 m² | 737.46 ft² |
| B210 | 1-BED + DEN | 68.27 m² | 734.80 ft² |
| B211 | 1-BED + DEN | 66.87 m² | 719.73 ft² |
| B212 | 1-BED + DEN | 65.52 m² | 705.29 ft² |
| B213 | 2-BED | 87.47 m² | 941.48 ft² |
| B214 | 2-BED | 79.26 m² | 853.09 ft² |
| B215 | STUDIO | 47.22 m² | 508.25 ft² |
| B216 | STUDIO | 47.17 m² | 507.77 ft² |
| B217 | 2-BED | 79.26 m² | 853.09 ft² |
| B218 | 2-BED | 73.75 m² | 793.81 ft² |
| B219 | 1-BED | 52.56 m² | 565.73 ft² |

| | | | |
|----------|-------------|----------|------------|
| LEVEL 03 | | | |
| B301 | 1-BED | 54.18 m² | 583.17 ft² |
| B302 | 1-BED | 61.67 m² | 663.84 ft² |
| B303 | 1-BED | 54.91 m² | 591.05 ft² |
| B304 | 2-BED | 85.79 m² | 923.40 ft² |
| B305 | 2-BED | 88.15 m² | 948.86 ft² |
| B306 | 2-BED | 84.11 m² | 905.36 ft² |
| B307 | 1-BED | 57.69 m² | 620.96 ft² |
| B308 | 1-BED + DEN | 66.74 m² | 718.36 ft² |
| B309 | 1-BED + DEN | 68.51 m² | 737.46 ft² |
| B310 | 1-BED + DEN | 68.27 m² | 734.80 ft² |
| B311 | 1-BED + DEN | 66.87 m² | 719.73 ft² |
| B312 | 1-BED + DEN | 65.52 m² | 705.29 ft² |
| B313 | 2-BED | 87.47 m² | 941.48 ft² |
| B314 | 2-BED | 79.26 m² | 853.09 ft² |
| B315 | STUDIO | 47.22 m² | 508.25 ft² |
| B316 | STUDIO | 47.17 m² | 507.77 ft² |
| B317 | 2-BED | 79.26 m² | 853.09 ft² |
| B318 | 2-BED | 73.75 m² | 793.81 ft² |
| B319 | 1-BED | 52.57 m² | 565.81 ft² |

| | | | |
|----------|-------------|----------|------------|
| LEVEL 04 | | | |
| B401 | 1-BED | 54.18 m² | 583.17 ft² |
| B402 | 1-BED | 61.67 m² | 663.84 ft² |
| B403 | 1-BED | 54.91 m² | 591.05 ft² |
| B404 | 2-BED | 85.79 m² | 923.40 ft² |
| B405 | 2-BED | 88.15 m² | 948.86 ft² |
| B406 | 2-BED | 84.11 m² | 905.36 ft² |
| B407 | 1-BED | 57.69 m² | 620.96 ft² |
| B408 | 1-BED + DEN | 66.74 m² | 718.36 ft² |
| B409 | 1-BED + DEN | 68.51 m² | 737.46 ft² |
| B410 | 1-BED + DEN | 68.27 m² | 734.80 ft² |
| B411 | 1-BED + DEN | 66.87 m² | 719.73 ft² |
| B412 | 1-BED + DEN | 65.52 m² | 705.29 ft² |
| B413 | 2-BED | 87.47 m² | 941.48 ft² |
| B414 | 2-BED | 79.26 m² | 853.09 ft² |
| B415 | STUDIO | 47.22 m² | 508.25 ft² |
| B416 | STUDIO | 47.17 m² | 507.77 ft² |
| B417 | 2-BED | 79.26 m² | 853.09 ft² |
| B418 | 2-BED | 73.75 m² | 793.81 ft² |
| B419 | 1-BED | 52.57 m² | 565.81 ft² |

| | | | |
|----------|-------------|----------|------------|
| LEVEL 05 | | | |
| B501 | 1-BED + DEN | 64.34 m² | 692.55 ft² |
| B502 | 2-BED | 85.11 m² | 916.15 ft² |
| B503 | 2-BED | 77.45 m² | 833.61 ft² |
| B504 | 2-BED | 82.93 m² | 892.64 ft² |
| B505 | 1-BED | 58.72 m² | 632.07 ft² |
| B506 | 1-BED | 58.93 m² | 634.31 ft² |
| B507 | 1-BED | 58.83 m² | 633.19 ft² |
| B508 | 1-BED | 58.83 m² | 633.19 ft² |
| B509 | 1-BED | 58.83 m² | 633.19 ft² |
| B510 | 2-BED | 84.11 m² | 905.32 ft² |
| B512 | 1-BED + DEN | 67.72 m² | 728.98 ft² |

| | | | |
|----------|-------------|----------|------------|
| LEVEL 06 | | | |
| B601 | 1-BED + DEN | 64.34 m² | 692.55 ft² |
| B602 | 2-BED | 85.11 m² | 916.15 ft² |
| B603 | 2-BED | 77.45 m² | 833.61 ft² |
| B604 | 2-BED | 82.93 m² | 892.64 ft² |
| B605 | 1-BED | 58.72 m² | 632.07 ft² |
| B606 | 1-BED | 58.93 m² | 634.31 ft² |
| B607 | 1-BED | 58.83 m² | 633.19 ft² |
| B608 | 1-BED | 58.83 m² | 633.19 ft² |
| B609 | 1-BED | 58.83 m² | 633.19 ft² |
| B610 | 2-BED | 84.11 m² | 905.32 ft² |
| B611 | 2-BED | 78.71 m² | 847.21 ft² |
| B612 | 1-BED + DEN | 67.72 m² | 728.98 ft² |

TOTAL UNITS: 98

BLDG 'A' UNIT BREAKDOWN

| NO. | BEDS | AREA | AREA (SF) |
|----------|-------------|----------|------------|
| LEVEL 01 | | | |
| A101 | 1-BED + DEN | 66.49 m² | 715.64 ft² |
| A102 | STUDIO | 45.91 m² | 494.22 ft² |
| A103 | 2-BED | 86.11 m² | 926.92 ft² |
| A104 | 2-BED | 88.15 m² | 948.86 ft² |
| A105 | 2-BED | 84.11 m² | 905.36 ft² |
| A106 | 1-BED | 57.69 m² | 620.96 ft² |
| A107 | 1-BED + DEN | 68.20 m² | 734.08 ft² |
| A108 | 1-BED + DEN | 68.51 m² | 737.46 ft² |
| A109 | 1-BED + DEN | 68.27 m² | 734.80 ft² |
| A110 | 1-BED + DEN | 68.33 m² | 735.45 ft² |
| A111 | 1-BED + DEN | 69.42 m² | 747.18 ft² |
| A112 | 1-BED | 53.57 m² | 576.80 ft² |
| A113 | 1-BED | 61.33 m² | 660.16 ft² |
| A114 | STUDIO | 47.22 m² | 508.25 ft² |
| A115 | STUDIO | 47.22 m² | 508.29 ft² |
| A116 | 2-BED | 79.21 m² | 852.57 ft² |
| A117 | 2-BED | 73.74 m² | 793.77 ft² |
| A118 | 1-BED | 55.39 m² | 596.25 ft² |

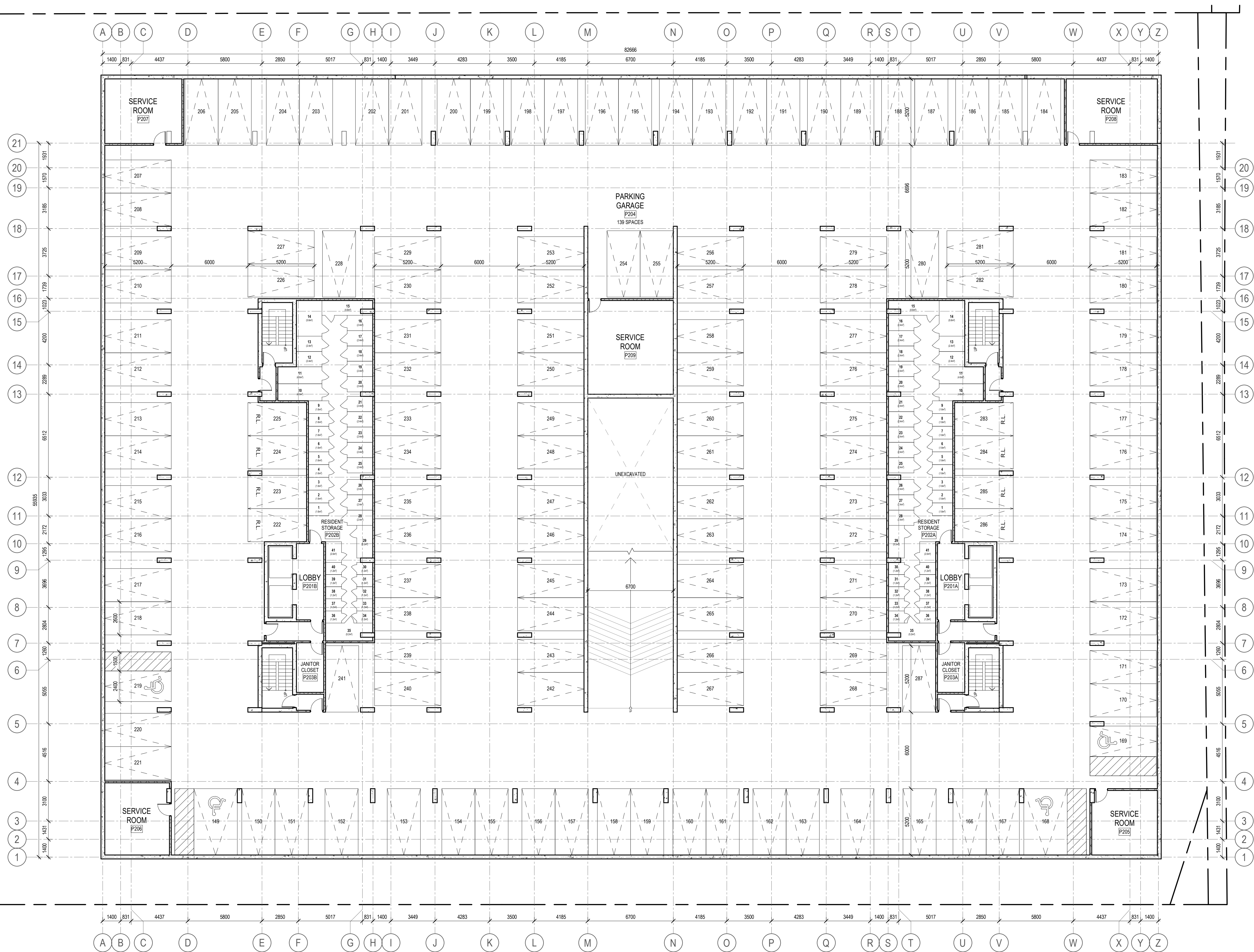
| | | | |
|----------|-------------|----------|------------|
| LEVEL 02 | | | |
| A201 | 1-BED | 57.63 m² | 620.33 ft² |
| A202 | 1-BED | 61.67 m² | 663.84 ft² |
| A203 | 1-BED | 54.91 m² | 591.05 ft² |
| A204 | 2-BED | 85.81 m² | 923.69 ft² |
| A205 | 2-BED | 88.12 m² | 948.57 ft² |
| A206 | 2-BED | 84.11 m² | 905.36 ft² |
| A207 | 1-BED | 57.69 m² | 620.96 ft² |
| A208 | 1-BED + DEN | 68.20 m² | 734.08 ft² |
| A209 | 1-BED + DEN | 68.51 m² | 737.46 ft² |
| A210 | 1-BED + DEN | 68.27 m² | 734.80 ft² |
| A211 | 1-BED + DEN | 68.33 m² | 735.45 ft² |
| A212 | 1-BED + DEN | 65.32 m² | 703.07 ft² |
| A213 | 2-BED | 77.64 m² | 835.69 ft² |
| A214 | 2-BED | 80.70 m² | 868.69 ft² |
| A215 | STUDIO | 47.22 m² | 508.25 ft² |
| A216 | STUDIO | 47.22 m² | 508.29 ft² |
| A217 | 2-BED | 79.21 m² | 852.57 ft² |
| A218 | 2-BED | 73.74 m² | 793.77 ft² |
| A219 | 1-BED | 52.66 m² | 566.81 ft² |

| | | | |
|----------|-------------|----------|------------|
| LEVEL 03 | | | |
| A301 | 1-BED | 52.10 m² | 560.82 ft² |
| A302 | 1-BED | 61.67 m² | 663.84 ft² |
| A303 | 1-BED | 54.91 m² | 591.05 ft² |
| A304 | 2-BED | 85.81 m² | 923.69 ft² |
| A305 | 2-BED | 88.12 m² | 948.57 ft² |
| A306 | 2-BED | 84.11 m² | 905.36 ft² |
| A307 | 1-BED | 57.69 m² | 620.96 ft² |
| A308 | 1-BED + DEN | 68.20 m² | 734.08 ft² |
| A309 | 1-BED + DEN | 68.51 m² | 737.46 ft² |
| A310 | 1-BED + DEN | 68.27 m² | 734.80 ft² |
| A311 | 1-BED + DEN | 68.33 m² | 735.45 ft² |
| A312 | 1-BED + DEN | 65.32 m² | 703.07 ft² |
| A313 | 2-BED | 83.86 m² | 902.69 ft² |
| A314 | 2-BED | 80.70 m² | 868.69 ft² |
| A315 | STUDIO | 47.22 m² | 508.25 ft² |
| A316 | STUDIO | 47.22 m² | 508.29 ft² |
| A317 | 2-BED | 79.21 m² | 852.57 ft² |
| A318 | 2-BED | 73.74 m² | 793.77 ft² |
| A319 | 1-BED | 52.75 m² | 567.78 ft² |

| | | | |
|----------|-------------|----------|------------|
| LEVEL 04 | | | |
| A401 | 1-BED | 52.10 m² | 560.82 ft² |
| A402 | 1-BED | 61.67 m² | 663.84 ft² |
| A403 | 1-BED | 54.91 m² | 591.05 ft² |
| A404 | 2-BED | 85.81 m² | 923.69 ft² |
| A405 | 2-BED | 88.12 m² | 948.57 ft² |
| A406 | 2-BED | 84.11 m² | 905.36 ft² |
| A407 | 1-BED | 57.69 m² | 620.96 ft² |
| A408 | 1-BED + DEN | 68.20 m² | 734.08 ft² |
| A409 | 1-BED + DEN | 68.51 m² | 737.46 ft² |
| A410 | 1-BED + DEN | 68.27 m² | 734.80 ft² |
| A411 | 1-BED + DEN | 68.33 m² | 735.45 ft² |
| A412 | 1-BED + DEN | 65.32 m² | 703.07 ft² |
| A413 | 2-BED | 83.86 m² | 902.69 ft² |
| A414 | 2-BED | 80.70 m² | 868.69 ft² |
| A415 | STUDIO | 47.22 m² | 508.25 ft² |
| A416 | STUDIO | 47.22 m² | 508.29 ft² |
| A417 | 2-BED | 79.21 m² | 852.57 ft² |
| A418 | 2-BED | 73.74 m² | 793.77 ft² |
| A419 | 1-BED | 52.75 m² | 567.78 ft² |

| | | | |
|----------|-------------|-----------|--------------|
| LEVEL 05 | | | |
| A501 | 1-BED | 52.84 m² | 568.79 ft² |
| A502 | 1-BED | 61.67 m² | 663.84 ft² |
| A503 | 1-BED | 54.91 m² | 591.05 ft² |
| A504 | 2-BED | 85.81 m² | 923.69 ft² |
| A505 | 2-BED | 88.12 m² | 948.57 ft² |
| A506 | 2-BED | 84.11 m² | 905.36 ft² |
| A507 | 1-BED | 57.69 m² | 620.96 ft² |
| A508 | 1-BED + DEN | 68.20 m² | 734.08 ft² |
| A509 | 1-BED + DEN | 68.51 m² | 737.46 ft² |
| A510 | 1-BED + DEN | 68.27 m² | 734.80 ft² |
| A511 | 1-BED + DEN | 68.33 m² | 735.45 ft² |
| A512 | 1-BED + DEN | 65.32 m² | 703.07 ft² |
| A513 | 2-BED | 83.86 m² | 902.69 ft² |
| A514 | 2-BED | 80.70 m² | 868.69 ft² |
| A515 | 1-BED + DEN | 68.79 m² | 740.46 ft² |
| A516 | 2-BED + DEN | 93.91 m² | 1,010.84 ft² |
| A517 | 2-BED + DEN | 101.02 m² | 1,087.36 ft² |

| LEVEL 06 | | | |
|----------|-------------|-----------|--------------|
| A601 | 1-BED | 52.84 m² | 568.79 ft² |
| A602 | 1-BED | 61.67 m² | 663.84 ft² |
| A603 | 1-BED | 54.91 m² | 591.05 ft² |
| A604 | 2-BED | 85.81 m² | 923.69 ft² |
| A605 | 2-BED | 88.12 m² | 948.57 ft² |
| A606 | 2-BED | 84.11 m² | 905.36 ft² |
| A607 | 1-BED | 57.69 m² | 620.96 ft² |
| A608 | 1-BED + DEN | 68.20 m² | 734.08 ft² |
| A609 | 1-BED + DEN | 68.51 m² | 737.46 ft² |
| A610 | 1-BED + DEN | 68.27 m² | 734.80 ft² |
| A611 | 1-BED + DEN | 68.33 m² | 735.45 ft² |
| A612 | 1-BED + DEN | 65.32 m² | 703.07 ft² |
| A613 | 2-BED | 83.86 m² | 902.69 ft² |
| A614 | 2-BED | 80.70 m² | 868.69 ft² |
| A615 | 1-BED + DEN | 68.79 m² | 740.46 ft² |
| A616 | 2-BED + DEN | 93.91 m² | 1,010.84 ft² |
| A617 | 2-BED + DEN | 101.02 m² | 1,087.36 ft² |



1 LEVEL P2 FLOOR PLAN
A100 SCALE: 1 : 150

- GENERAL ARCHITECTURAL NOTES:
1. This drawing is the property of the Architect and may not be reproduced or used without the expressed consent of the Architect.
 2. Drawings are not to be scaled. The Contractor is responsible for checking and verifying all levels and dimensions and shall report all discrepancies to the Architect and obtain clarification prior to commencing work.
 3. Upon notice in writing, the Architect will provide written/graphic clarification or supplementary information regarding the intent of the Contract Documents.
 4. The Architectural Drawings are to be read in conjunction with all other Contract Documents including Project Manuals and the Structural, Mechanical, Mechanical and Electrical Drawings.
 5. Positions of exposed or finished Mechanical or Electrical devices, fittings and fixtures are indicated on the Architectural Drawings. Locations shown on the Architectural Drawings shall govern over Mechanical and Electrical Drawings. Mechanical and Electrical items not clearly located will be located as directed by the Architect.
 6. These documents are not to be used for construction unless specifically noted for such purpose.

1 ISSUED FOR ZONING BY-LAW AMEND. 2025-04-10

ISSUE RECORD



project1
studio

Project1 Studio Incorporated
[613.884.9339] [mail@project1studio.ca]

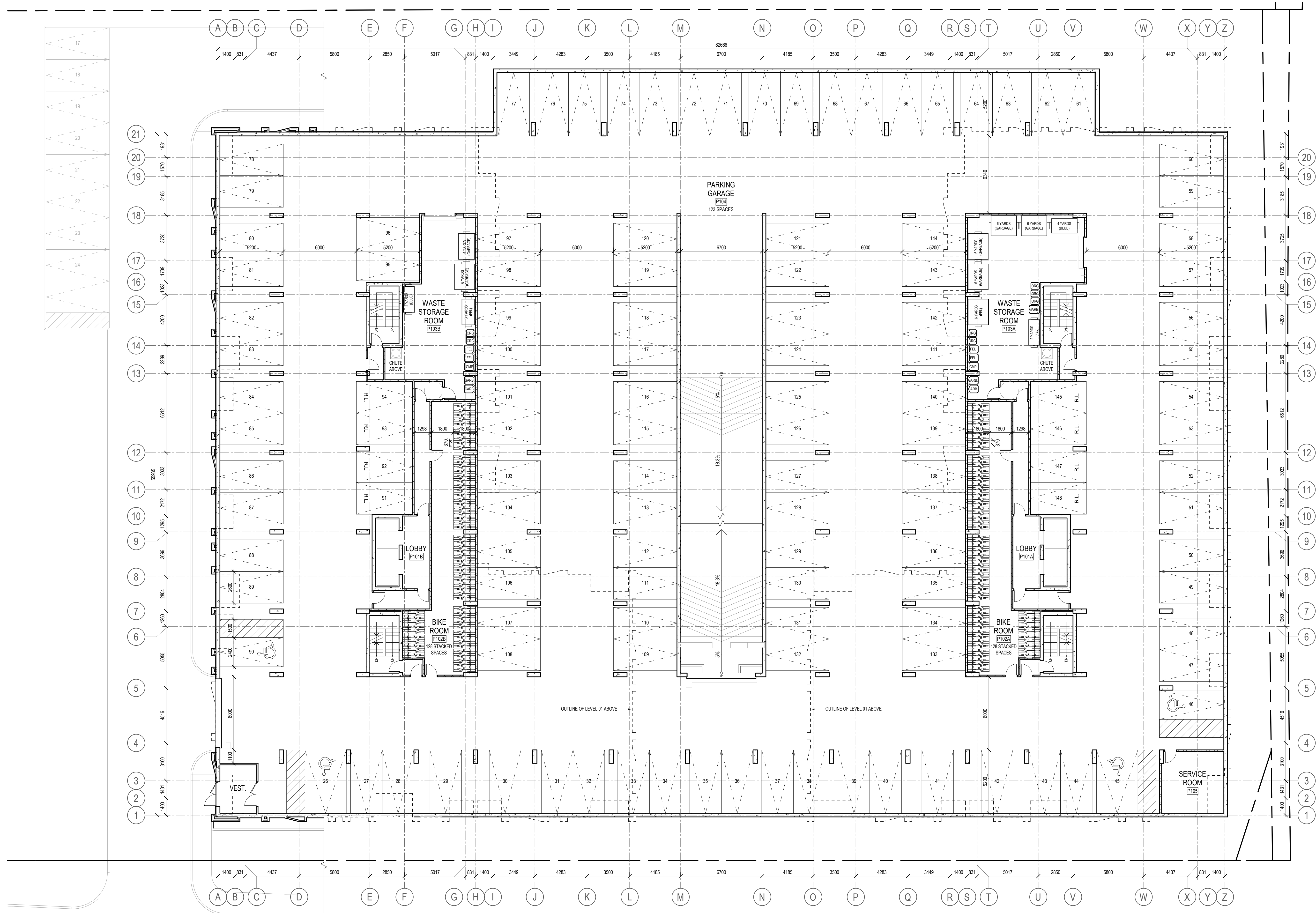
1765 MONTREAL RD

1765 Montreal Road
Ottawa, ON

| PROJ | SCALE | DRAWN | REVIEWED |
|------|-------|-------|----------|
| 2107 | NOTED | BH | JH |

LEVEL P2 FLOOR PLAN

A100



1 LEVEL P1 FLOOR PLAN
A101 SCALE: 1 : 150

- GENERAL ARCHITECTURAL NOTES:
- This drawing is the property of the Architect and may not be reproduced or used without the expressed consent of the Architect.
 - Drawings are not to be scaled. The Contractor is responsible for checking and verifying all levels and dimensions and shall report all discrepancies to the Architect and obtain clarification prior to commencing work.
 - Upon notice in writing, the Architect will provide written clarification or supplementary information regarding the intent of the Contract Documents.
 - The Architectural Drawings are to be read in conjunction with all other Contract Documents including Project Manuals and the Structural, Mechanical and Electrical Drawings.
 - Positions of proposed or finished Mechanical or Electrical devices, fittings and fixtures are indicated on the Architectural Drawings. Locations shown on the Architectural Drawings shall govern over Mechanical and Electrical Drawings. Mechanical and Electrical items not clearly located will be located as directed by the Architect.
 - These documents are not to be used for construction unless specifically noted for such purpose.

1 ISSUED FOR ZONING BY-LAW AMEND. 2025-04-10

ISSUE RECORD



project1
studio

Project1 Studio Incorporated
(613.884.9339 | mail@project1studio.ca)

1765 MONTREAL RD

1765 Montreal Road
Ottawa, ON

| PROJ | SCALE | DRAWN | REVIEWED |
|------|-------|-------|----------|
| 2107 | NOTED | BH | JH |

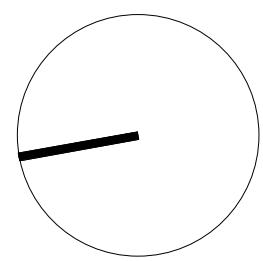
LEVEL P1 FLOOR PLAN

A101

- GENERAL ARCHITECTURAL NOTES:
- This drawing is the property of the Architect and may not be reproduced or used without the expressed consent of the Architect.
 - Drawings are not to be scaled. The Contractor is responsible for checking and verifying all levels and dimensions and shall report all discrepancies to the Architect and obtain clarification prior to commencing work.
 - Upon notice in writing, the Architect will provide written/graphic clarification or supplementary information regarding the intent of the Contract Documents.
 - The Architectural Drawings are to be read in conjunction with all other Contract Documents including Project Manuals and the Structural, Mechanical and Electrical Drawings.
 - Positions of exposed or finished Mechanical or Electrical devices, fittings and fixtures are indicated on the Architectural Drawings. Locations shown on the Architectural Drawings shall govern over Mechanical and Electrical Drawings. Mechanical and Electrical items not clearly located will be located as directed by the Architect.
 - These documents are not to be used for construction unless specifically noted for such purpose.

1 ISSUED FOR ZONING BY-LAW AMEND. 2025-04-10

ISSUE RECORD



project1
studio

Project1 Studio Incorporated
[613.884.9939 | mail@project1studio.ca]

1765 MONTREAL RD

1765 Montreal Road
Ottawa, ON

| | | | |
|------|-------|-------|----------|
| PROJ | SCALE | DRAWN | REVIEWED |
| 2107 | NOTED | BH | JH |

LEVEL 01 FLOOR PLAN

A102



1 LEVEL 02 FLOOR PLAN
A103 SCALE: 1 : 150

- GENERAL ARCHITECTURAL NOTES:
- This drawing is the property of the Architect and may not be reproduced or used without the expressed consent of the Architect.
 - Drawings are not to be scaled. The Contractor is responsible for checking and verifying all levels and dimensions and shall report all discrepancies to the Architect and obtain clarification prior to commencing work.
 - Upon notice in writing, the Architect will provide written/graphic clarification or supplementary information regarding the intent of the Contract Documents.
 - The Architectural Drawings are to be read in conjunction with all other Contract Documents including Project Manuals and the Structural, Mechanical and Electrical Drawings.
 - Positions of exposed or finished Mechanical or Electrical devices, fittings and fixtures are indicated on the Architectural Drawings. Locations shown on the Architectural Drawings shall govern over Mechanical and Electrical Drawings. Mechanical and Electrical items not clearly located will be located as directed by the Architect.
 - These documents are not to be used for construction unless specifically noted for such purpose.

1 ISSUED FOR ZONING BY-LAW AMEND. 2025-04-10

ISSUE RECORD



project1
studio

Project1 Studio Incorporated
[613.884.9339] | mail@project1studio.ca

1765 MONTREAL RD

1765 Montreal Road
Ottawa, ON

| | | | |
|------|-------|-------|----------|
| PROJ | SCALE | DRAWN | REVIEWED |
| 2107 | NOTED | BH | JH |

LEVEL 02 FLOOR PLAN

A103



1 LEVEL 02-04 FLOOR PLAN
A104 SCALE: 1 : 150

- GENERAL ARCHITECTURAL NOTES:
- This drawing is the property of the Architect and may not be reproduced or used without the expressed consent of the Architect.
 - Drawings are not to be scaled. The Contractor is responsible for checking and verifying all levels and dimensions and shall report all discrepancies to the Architect and obtain clarification prior to commencing work.
 - Upon notice in writing, the Architect will provide written/graphic clarification or supplementary information regarding the intent of the Contract Documents.
 - The Architectural Drawings are to be read in conjunction with all other Contract Documents including Project Manuals and the Structural, Mechanical and Electrical Drawings.
 - Positions of exposed or finished Mechanical or Electrical devices, fittings and fixtures are indicated on the Architectural Drawings. Locations shown on the Architectural Drawings shall govern over Mechanical and Electrical Drawings. Mechanical and Electrical items not clearly located will be located as directed by the Architect.
 - These documents are not to be used for construction unless specifically noted for such purpose.

1 ISSUED FOR ZONING BY-LAW AMEND. 2025-04-10

ISSUE RECORD



project1
studio

Project1 Studio Incorporated
[613.884.9939] | mail@project1studio.ca

1765 MONTREAL RD

1765 Montreal Road
Ottawa, ON

| | | | |
|------|-------|-------|----------|
| PROJ | SCALE | DRAWN | REVIEWED |
| 2107 | NOTED | BH | JH |

LEVEL 03-04 FLOOR PLAN

A104

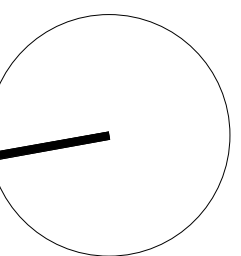


1 LEVEL 05 FLOOR PLAN
A105 SCALE: 1 : 150

- GENERAL ARCHITECTURAL NOTES:
- This drawing is the property of the Architect and may not be reproduced or used without the expressed consent of the Architect.
 - Drawings are not to be scaled. The Contractor is responsible for checking and verifying all levels and dimensions and shall report all discrepancies to the Architect and obtain clarification prior to commencing work.
 - Upon notice in writing, the Architect will provide written/graphic clarification or supplementary information regarding the intent of the Contract Documents.
 - The Architectural Drawings are to be read in conjunction with all other Contract Documents including Project Manuals and the Structural, Mechanical and Electrical Drawings.
 - Positions of exposed or finished Mechanical or Electrical devices, fittings and fixtures are indicated on the Architectural Drawings. Locations shown on the Architectural Drawings shall govern over Mechanical and Electrical Drawings. Mechanical and Electrical items not clearly located will be located as directed by the Architect.
 - These documents are not to be used for construction unless specifically noted for such purpose.

1 ISSUED FOR ZONING BY-LAW AMEND. 2025-04-10

ISSUE RECORD



project1
studio

Project1 Studio Incorporated
[613.884.9339 | mail@project1studio.ca]

1765 MONTREAL RD

1765 Montreal Road
Ottawa, ON

| | | | |
|------|-------|-------|----------|
| PROJ | SCALE | DRAWN | REVIEWED |
| 2107 | NOTED | BH | JH |

LEVEL 05 FLOOR PLAN

A105



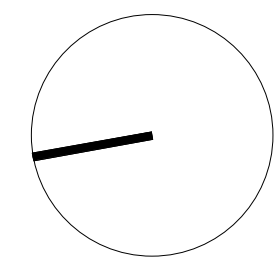
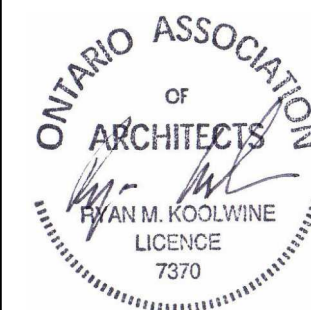
1 LEVEL 06 FLOOR PLAN
A106 SCALE: 1 : 150

GENERAL ARCHITECTURAL NOTES:

- This drawing is the property of the Architect and may not be reproduced or used without the expressed consent of the Architect.
- Drawings are not to be scaled. The Contractor is responsible for checking and verifying all levels and dimensions and shall report all discrepancies to the Architect and obtain clarification prior to commencing work.
- Upon notice in writing, the Architect will provide written/graphic clarification or supplementary information regarding the intent of the Contract Documents.
- The Architectural Drawings are to be read in conjunction with all other Contract Documents including Project Manuals and the Structural, Mechanical and Electrical Drawings.
- Positions of exposed or finished Mechanical or Electrical devices, fittings and fixtures are indicated on the Architectural Drawings. Locations shown on the Architectural Drawings shall govern over Mechanical and Electrical Drawings. Mechanical and Electrical items not clearly located will be located as directed by the Architect.
- These documents are not to be used for construction unless specifically noted for such purpose.

1 ISSUED FOR ZONING BY-LAW AMEND. 2025-04-10

ISSUE RECORD



project1
studio

Project1 Studio Incorporated
[613.884.9339] [mail@project1studio.ca]

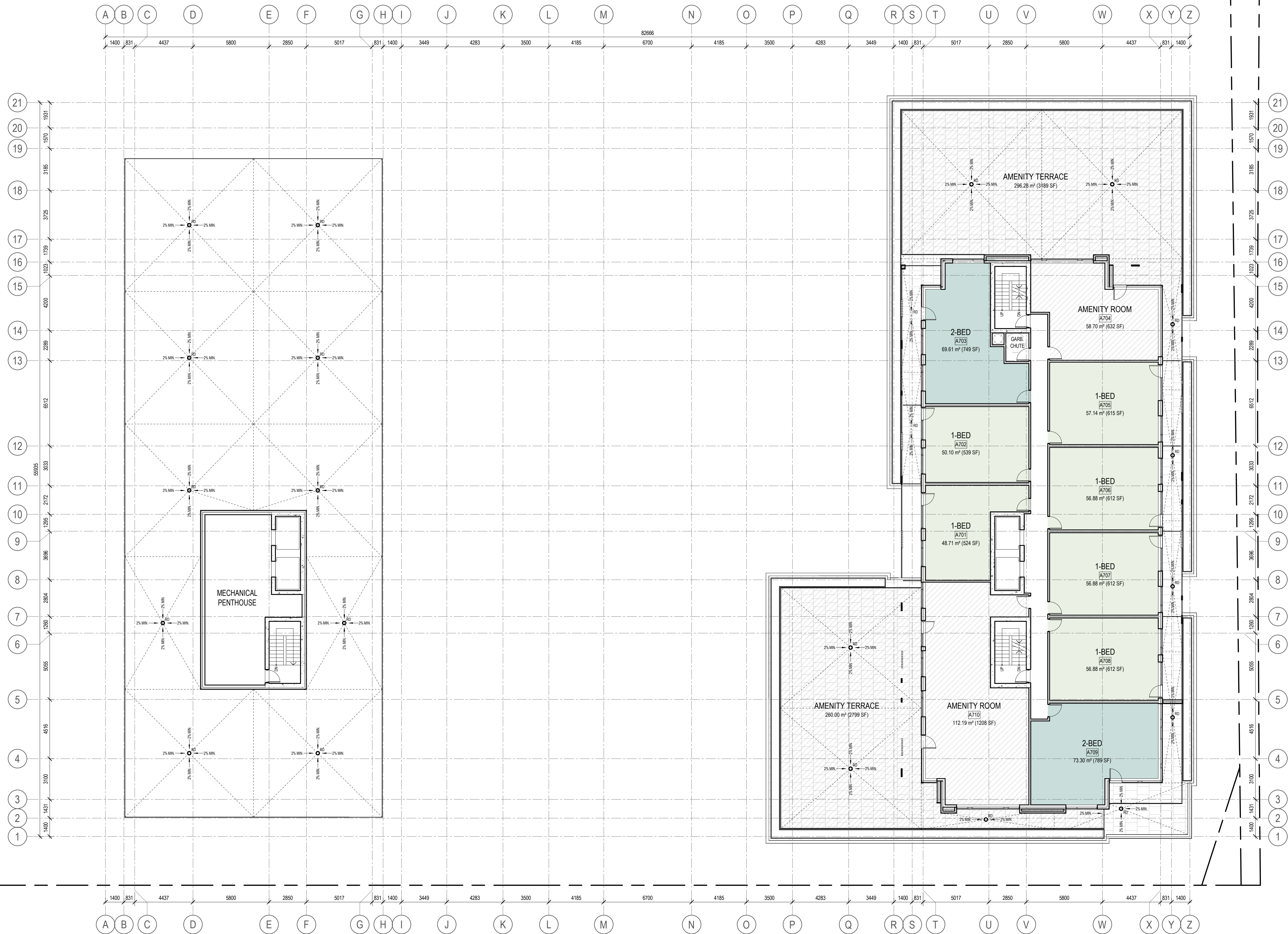
1765 MONTREAL RD

1765 Montreal Road
Ottawa, ON

| | | | |
|------|-------|-------|----------|
| PROJ | SCALE | DRAWN | REVIEWED |
| 2107 | NOTED | BH | JH |

LEVEL 06 FLOOR PLAN

A106

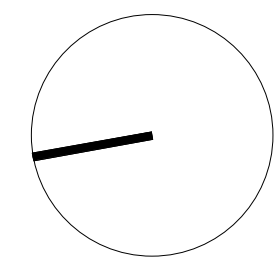
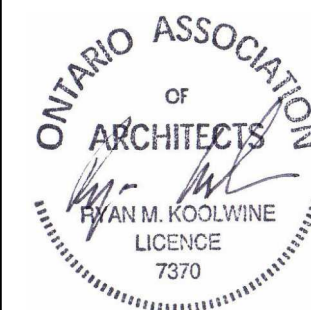


1 LEVEL 07 FLOOR PLAN
A107 SCALE: 1 : 150

- GENERAL ARCHITECTURAL NOTES:
- This drawing is the property of the Architect and may not be reproduced or used without the expressed consent of the Architect.
 - Drawings are not to be scaled. The Contractor is responsible for checking and verifying all levels and dimensions and shall report all discrepancies to the Architect and obtain clarification prior to commencing work.
 - Upon notice in writing, the Architect will provide written/graphic clarification or supplementary information regarding the intent of the Contract Documents.
 - The Architectural Drawings are to be read in conjunction with all other Contract Documents including Project Manuals and the Structural, Mechanical and Electrical Drawings.
 - Positions of exposed or finished Mechanical or Electrical devices, fittings and fixtures are indicated on the Architectural Drawings. Locations shown on the Architectural Drawings shall govern over Mechanical and Electrical Drawings. Mechanical and Electrical items not clearly located will be located as directed by the Architect.
 - These documents are not to be used for construction unless specifically noted for such purpose.

1 ISSUED FOR ZONING BY-LAW AMEND. 2025-04-10

ISSUE RECORD



project1
studio

Project1 Studio Incorporated
[613.884.3939 | mail@project1studio.ca]

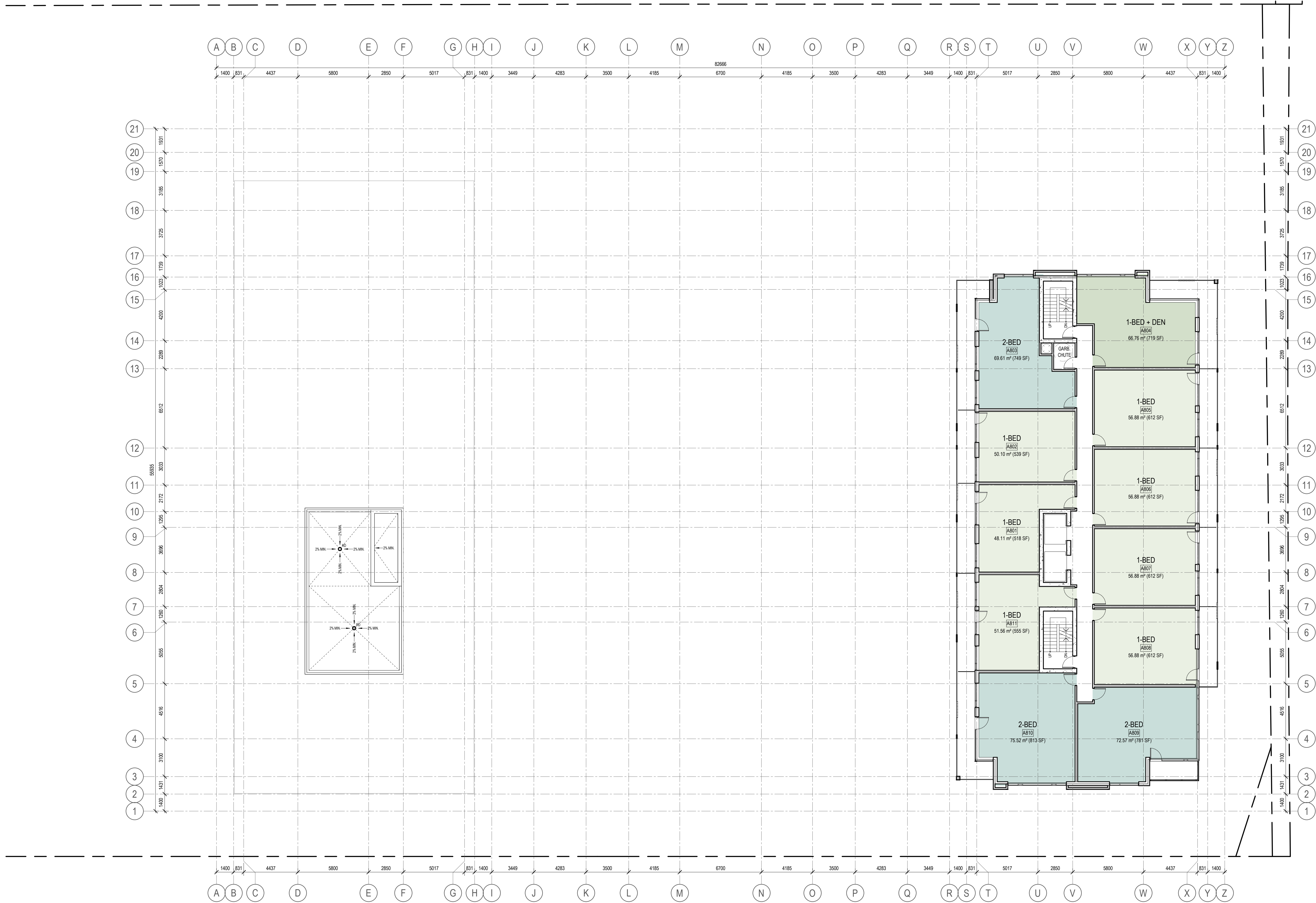
1765 MONTREAL RD

1765 Montreal Road
Ottawa, ON

| PROJ | SCALE | DRAWN | REVIEWED |
|------|-------|-------|----------|
| 2107 | NOTED | BH | JH |

LEVEL 07 FLOOR PLAN

A107

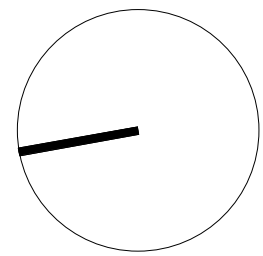


1 LEVEL 08-17 FLOOR PLAN
A108 SCALE: 1 : 150

- GENERAL ARCHITECTURAL NOTES:
- This drawing is the property of the Architect and may not be reproduced or used without the expressed consent of the Architect.
 - Drawings are not to be scaled. The Contractor is responsible for checking and verifying all levels and dimensions and shall report all discrepancies to the Architect and obtain clarification prior to commencing work.
 - Upon notice in writing, the Architect will provide written/graphic clarification or supplementary information regarding the intent of the Contract Documents.
 - The Architectural Drawings are to be read in conjunction with all other Contract Documents including Project Manuals and the Structural, Mechanical and Electrical Drawings.
 - Positions of exposed or finished Mechanical or Electrical devices, fittings and fixtures are indicated on the Architectural Drawings. Locations shown on the Architectural Drawings shall govern over Mechanical and Electrical Drawings. Mechanical and Electrical items not clearly located will be located as directed by the Architect.
 - These documents are not to be used for construction unless specifically noted for such purpose.

1 ISSUED FOR ZONING BY-LAW AMEND. 2025-04-10

ISSUE RECORD



project1
studio

Project1 Studio Incorporated
[613.884.9939] [mail@project1studio.ca]

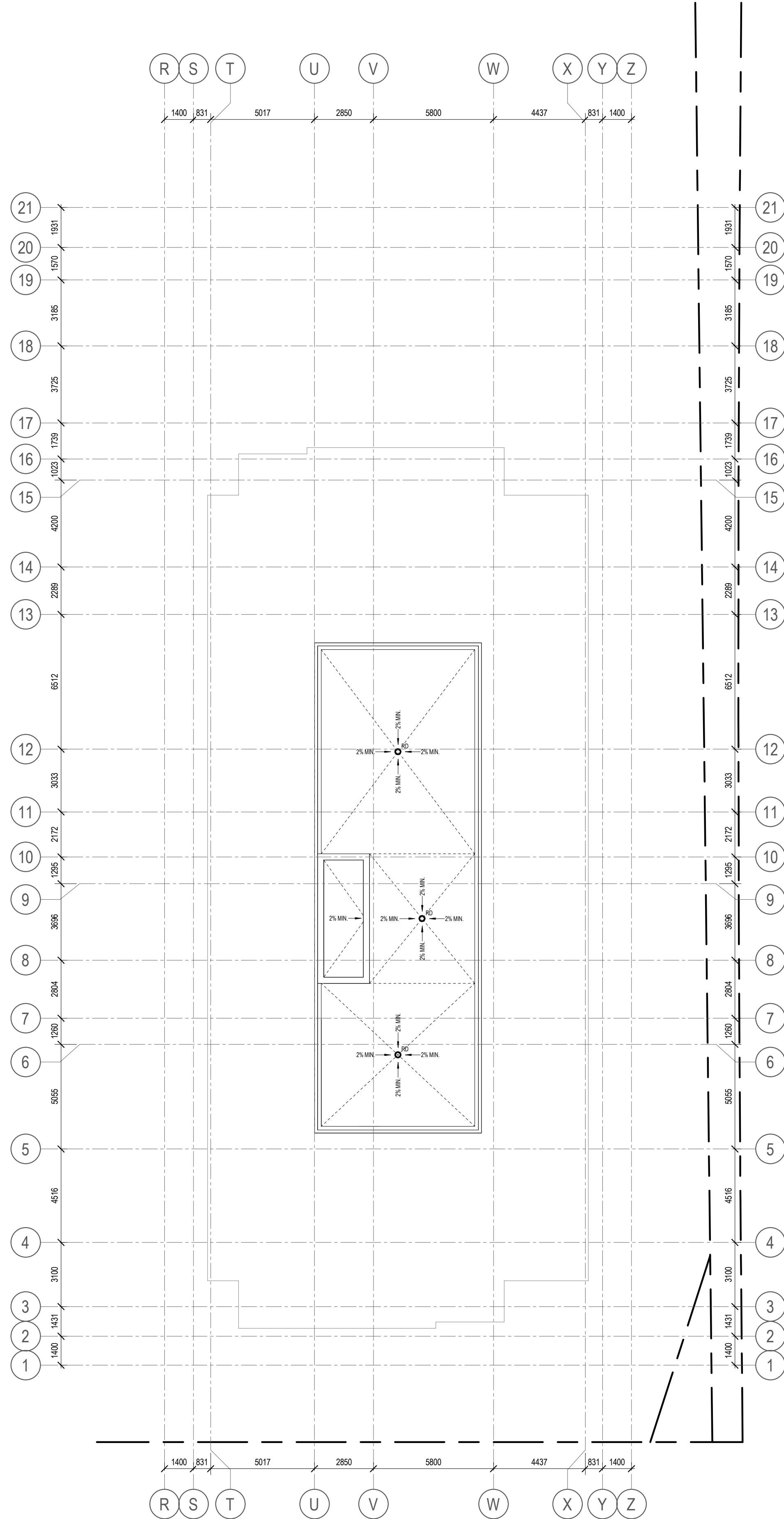
1765 MONTREAL RD

1765 Montreal Road
Ottawa, ON

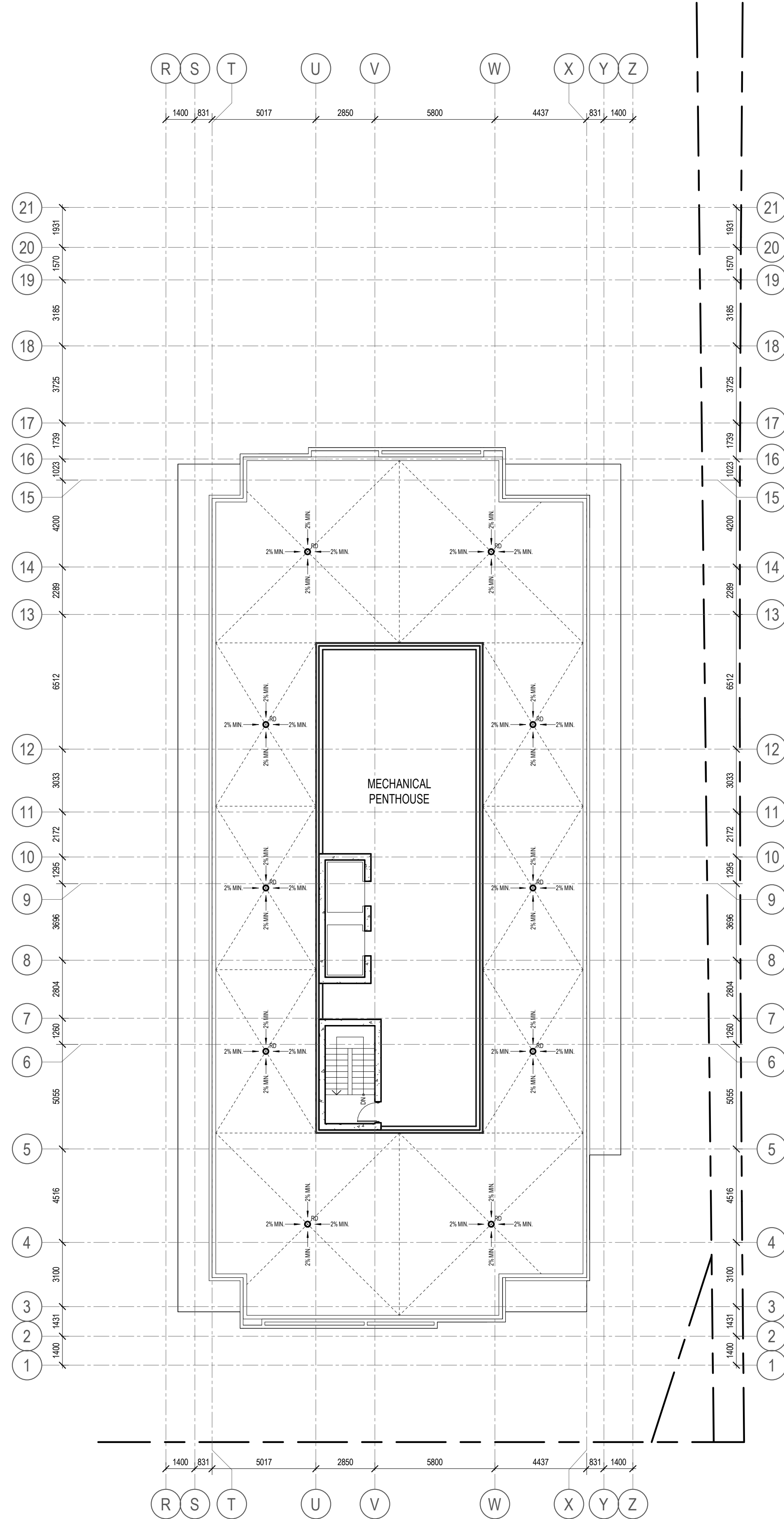
| | | | |
|------|-------|-------|----------|
| PROJ | SCALE | DRAWN | REVIEWED |
| 2107 | NOTED | BH | JH |

LEVEL 08-17 FLOOR PLAN

A108



2 ROOF PLAN - MECHANICAL PENTHOUSE
A109 SCALE: 1 : 150



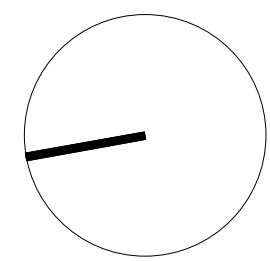
1 ROOF PLAN
A109 SCALE: 1 : 150

GENERAL ARCHITECTURAL NOTES:

1. This drawing is the property of the Architect and may not be reproduced or used without the expressed consent of the Architect.
2. Drawings are not to be scaled. The Contractor is responsible for checking and verifying all levels and dimensions and shall report all discrepancies to the Architect and obtain clarification prior to commencing work.
3. Upon notice in writing, the Architect will provide written/graphic clarification or supplementary information regarding the intent of the Contract Documents.
4. The Architectural Drawings are to be read in conjunction with all other Contract Documents including Project Manuals and the Structural, Mechanical and Electrical Drawings.
5. Positions of exposed or finished Mechanical or Electrical devices, fittings and fixtures are indicated on the Architectural Drawings. Locations shown on the Architectural Drawings shall govern over Mechanical and Electrical Drawings. Mechanical and Electrical items not clearly located will be located as directed by the Architect.
6. These documents are not to be used for construction unless specifically noted for such purpose.

1 ISSUED FOR ZONING BY-LAW AMEND. 2025-04-10

ISSUE RECORD



project1
studio

Project1 Studio Incorporated
[613.884.3939] [mail@project1studio.ca]

1765 MONTREAL RD

1765 Montreal Road
Ottawa, ON

| PROJ | SCALE | DRAWN | REVIEWED |
|------|-------|-------|----------|
| 2107 | NOTED | BH | JH |

ROOF PLAN

A109

CLADDING LEGEND:

- | | | |
|--|---|----------------------------|
| | 1 | STONE MASONRY WHITE |
| | 2 | BRICK MASONRY LIGHT GREY |
| | 3 | BRICK MASONRY DARK GREY |
| | 4 | ALUMINUM PANEL DARK GREY |
| | 5 | ALUMINUM PANEL WHITE |
| | 6 | ALUMINUM PANEL CEDAR PLANK |

GENERAL ARCHITECTURAL NOTES:

- This drawing is the property of the Architect and may not be reproduced or used without the expressed consent of the Architect.
- Drawings are not to be scaled. The Contractor is responsible for checking and verifying all levels and dimensions and shall report all discrepancies to the Architect and obtain clarification prior to commencing work.
- Upon notice in writing, the Architect will provide written/graphic clarification or supplementary information regarding the intent of the Contract Documents. The Architectural Drawings are to be read in conjunction with all other Contract Documents including Project Manuals and the Structural, Mechanical and Electrical Drawings.
- Positions of exposed or finished Mechanical or Electrical devices, fittings and fixtures are indicated on the Architectural Drawings. Locations shown on the Architectural Drawings shall govern over Mechanical and Electrical Drawings. Mechanical and Electrical items not clearly located will be located as directed by the Architect.
- These documents are not to be used for construction unless specifically noted for such purpose.



1 EAST ELEVATION
A200 SCALE: 1 : 150

1 ISSUED FOR ZONING BY-LAW AMEND. 2025-04-10

ISSUE RECORD



project1
studio

Project1 Studio Incorporated
(613) 884-3939 | mail@project1studio.ca

1765 MONTREAL RD

1765 Montreal Road
Ottawa, ON

| | | | |
|------|-------|-------|----------|
| PROJ | SCALE | DRAWN | REVIEWED |
| 2107 | NOTED | BH | JH |

EAST ELEVATION

A200

CLADDING LEGEND:

- | | | |
|--|---|----------------------------|
| | 1 | STONE MASONRY WHITE |
| | 2 | BRICK MASONRY LIGHT GREY |
| | 3 | BRICK MASONRY DARK GREY |
| | 4 | ALUMINUM PANEL DARK GREY |
| | 5 | ALUMINUM PANEL WHITE |
| | 6 | ALUMINUM PANEL CEDAR PLANK |

- GENERAL ARCHITECTURAL NOTES:
- This drawing is the property of the Architect and may not be reproduced or used without the expressed consent of the Architect.
 - Drawings are not to be scaled. The Contractor is responsible for checking and verifying all levels and dimensions and shall report all discrepancies to the Architect and obtain clarification prior to commencing work.
 - Upon notice in writing, the Architect will provide written/graphic clarification or supplementary information regarding the intent of the Contract Documents.
 - The Architectural Drawings are to be read in conjunction with all other Contract Documents including Project Manuals and the Structural, Mechanical and Electrical Drawings.
 - Positions of exposed or finished Mechanical or Electrical devices, fittings and fixtures are indicated on the Architectural Drawings. Locations shown on the Architectural Drawings shall govern over Mechanical and Electrical Drawings. Mechanical and Electrical items not clearly located will be located as directed by the Architect.
 - These documents are not to be used for construction unless specifically noted for such purpose.



ISSUE RECORD



project1
studio

Project1 Studio Incorporated
(613) 884-9939 | mail@project1studio.ca

1765 MONTREAL RD

1765 Montreal Road
Ottawa, ON

| | | | |
|------|-------|-------|----------|
| PROJ | SCALE | DRAWN | REVIEWED |
| 2107 | NOTED | BH | JH |

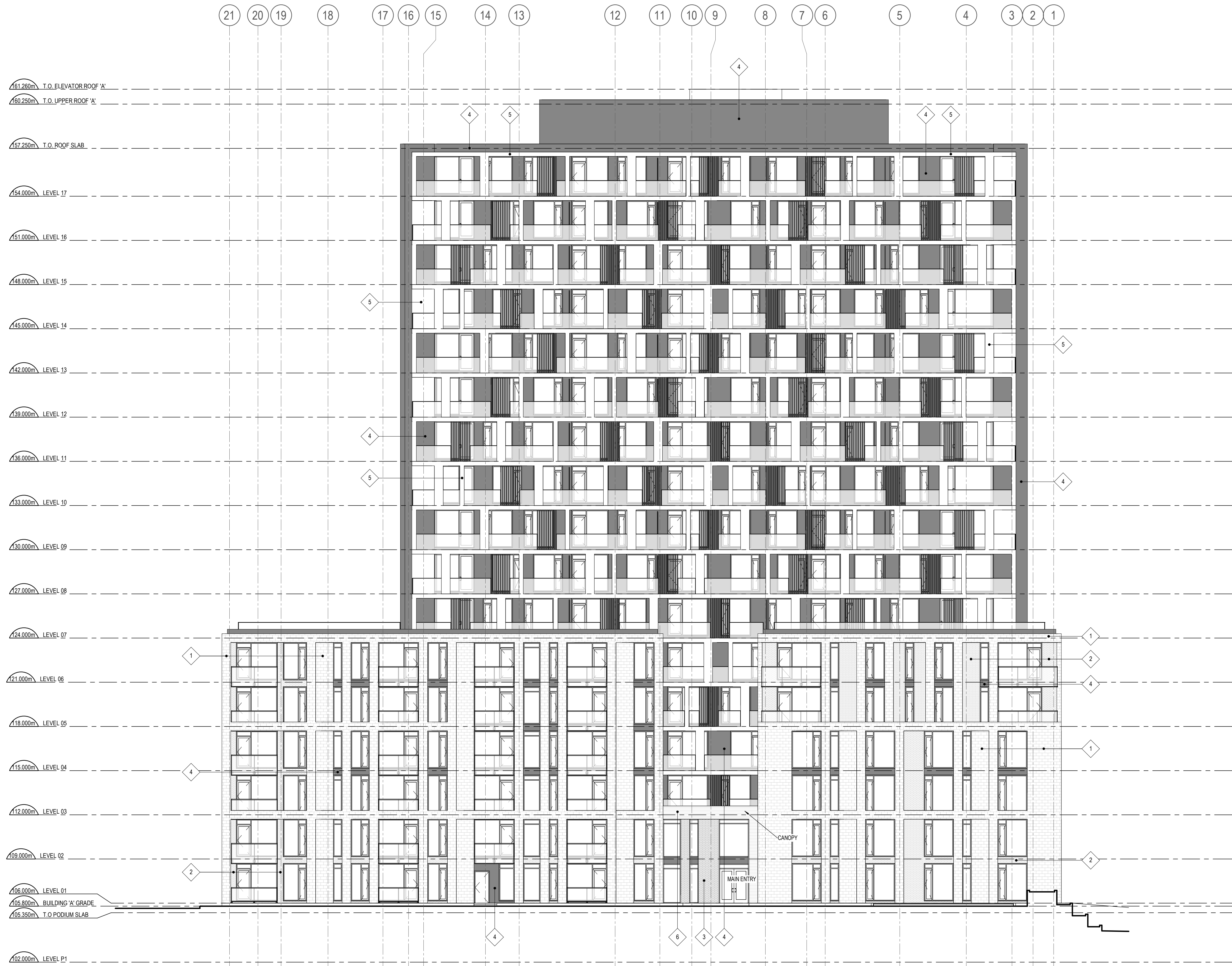
WEST ELEVATION

CLADDING LEGEND:

- | | | |
|--|---|-------------------------------|
| | 1 | STONE MASONRY WHITE |
| | 2 | BRICK MASONRY LIGHT GREY |
| | 3 | BRICK MASONRY DARK GREY |
| | 4 | ALUMINUM PANEL DARK GREY |
| | 5 | ALUMINUM PANEL WHITE |
| | 6 | ALUMINUM PANEL CEDAR PLANK |

GENERAL ARCHITECTURAL NOTES:

- This drawing is the property of the Architect and may not be reproduced or used without the expressed consent of the Architect.
- Drawings are not to be scaled. The Contractor is responsible for checking and verifying all levels and dimensions and shall report all discrepancies to the Architect and obtain clarification prior to commencing work.
- Upon notice in writing, the Architect will provide written/graphic clarification or supplementary information regarding the intent of the Contract Documents. The Architectural Drawings are to be read in conjunction with all other Contract Documents including Project Manuals and the Structural, Mechanical and Electrical Drawings.
- Positions of exposed or finished Mechanical or Electrical devices, fittings and fixtures are indicated on the Architectural Drawings. Locations shown on the Architectural Drawings shall govern over Mechanical and Electrical Drawings. Mechanical and Electrical items not clearly located will be located as directed by the Architect.
- These documents are not to be used for construction unless specifically noted for such purpose.



ISSUE RECORD



project1
studio

Project1 Studio Incorporated
(613.884.9939) | mail@project1studio.ca

1765 MONTREAL RD

1765 Montreal Road
Ottawa, ON

| | | | |
|------|-------|-------|----------|
| PROJ | SCALE | DRAWN | REVIEWED |
| 2107 | NOTED | BH | JH |

NORTH ELEVATION
BUILDING 'A'

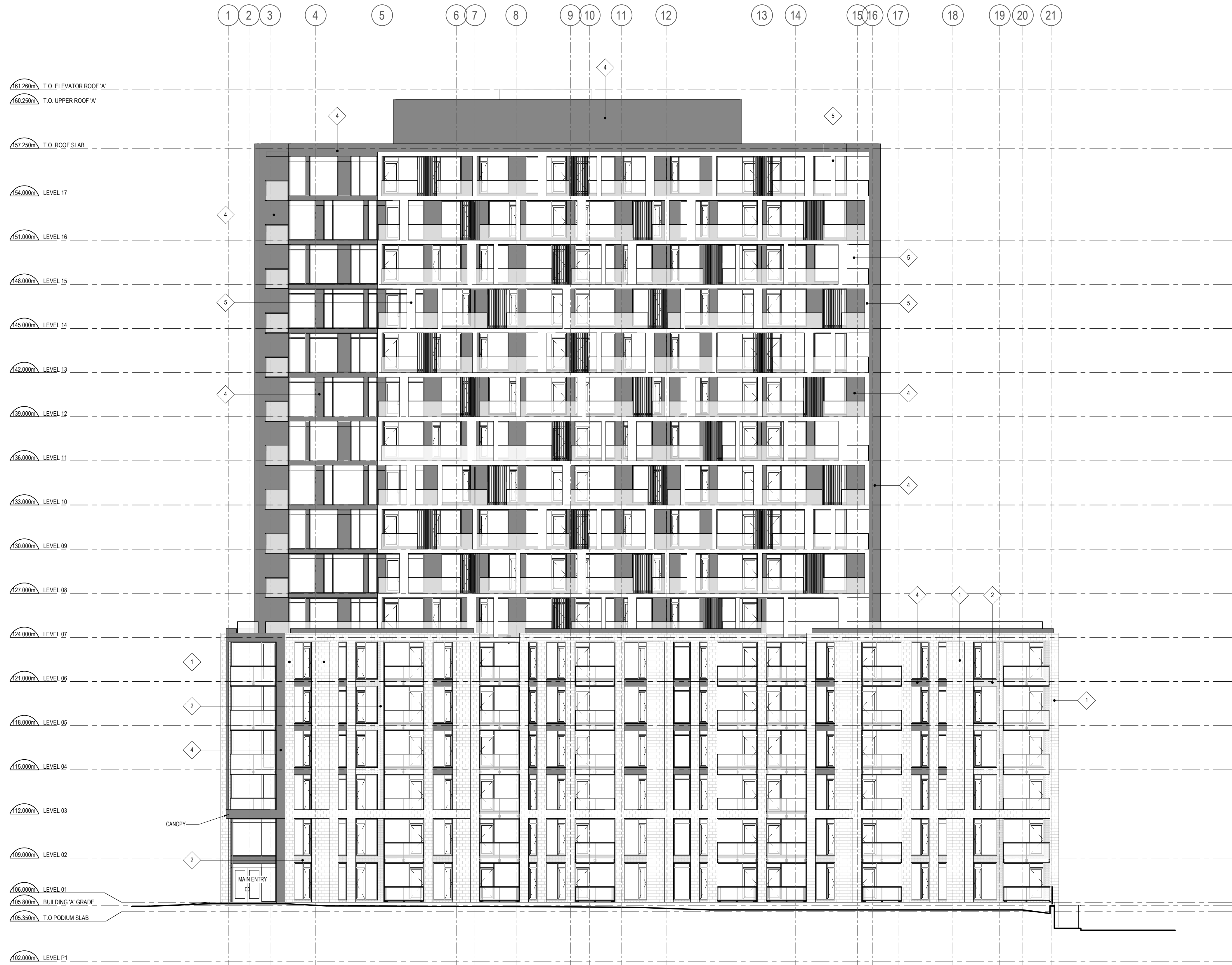
A202

CLADDING LEGEND:

- | | | |
|--|---|-------------------------------|
| | 1 | STONE MASONRY WHITE |
| | 2 | BRICK MASONRY LIGHT GREY |
| | 3 | BRICK MASONRY DARK GREY |
| | 4 | ALUMINUM PANEL DARK GREY |
| | 5 | ALUMINUM PANEL WHITE |
| | 6 | ALUMINUM PANEL CEDAR PLANK |

GENERAL ARCHITECTURAL NOTES:

- This drawing is the property of the Architect and may not be reproduced or used without the expressed consent of the Architect.
- Drawings are not to be scaled. The Contractor is responsible for checking and verifying all levels and dimensions and shall report all discrepancies to the Architect and obtain clarification prior to commencing work.
- Upon notice in writing, the Architect will provide written/graphic clarification or supplementary information regarding the intent of the Contract Documents. The Architectural Drawings are to be read in conjunction with all other Contract Documents including Project Manuals and the Structural, Mechanical and Electrical Drawings.
- Positions of exposed or finished Mechanical or Electrical devices, fittings and fixtures are indicated on the Architectural Drawings. Locations shown on the Architectural Drawings shall govern over Mechanical and Electrical Drawings. Mechanical and Electrical items not clearly located will be located as directed by the Architect.
- These documents are not to be used for construction unless specifically noted for such purpose.



ISSUE RECORD



project1
studio

Project1 Studio Incorporated
(613) 884-3939 | mail@project1studio.ca

1765 MONTREAL RD

1765 Montreal Road
Ottawa, ON

| | | | |
|------|-------|-------|----------|
| PROJ | SCALE | DRAWN | REVIEWED |
| 2107 | NOTED | BH | JH |

SOUTH ELEVATION
BUILDING 'A'

A203

CLADDING LEGEND:

- | | | |
|--|---|-------------------------------|
| | 1 | STONE MASONRY WHITE |
| | 2 | BRICK MASONRY LIGHT GREY |
| | 3 | BRICK MASONRY DARK GREY |
| | 4 | ALUMINUM PANEL DARK GREY |
| | 5 | ALUMINUM PANEL WHITE |
| | 6 | ALUMINUM PLANK CEDAR PLANK |

GENERAL ARCHITECTURAL NOTES:

- This drawing is the property of the Architect and may not be reproduced or used without the expressed consent of the Architect.
- Drawings are not to be scaled. The Contractor is responsible for checking and verifying all levels and dimensions and shall report all discrepancies to the Architect and obtain clarification prior to commencing work.
- Upon notice in writing, the Architect will provide written/graphic clarification or supplementary information regarding the intent of the Contract Documents. The Architectural Drawings are to be read in conjunction with all other Contract Documents including Project Manuals and the Structural, Mechanical and Electrical Drawings.
- Positions of exposed or finished Mechanical or Electrical devices, fittings and fixtures are indicated on the Architectural Drawings. Locations shown on the Architectural Drawings shall govern over Mechanical and Electrical Drawings. Mechanical and Electrical items not clearly located will be located as directed by the Architect.
- These documents are not to be used for construction unless specifically noted for such purpose.



1 NORTH ELEVATION - BUILDING 'B'
A204 SCALE: 1 : 150



2 SOUTH ELEVATION - BUILDING 'B'
A204 SCALE: 1 : 150

1 ISSUED FOR ZONING BY-LAW AMEND. 2025-04-10

ISSUE RECORD



project1
studio

Project1 Studio Incorporated
(613.884.9399) | mail@project1studio.ca

1765 MONTREAL RD

1765 Montreal Road
Ottawa, ON

| | | | |
|------|-------|-------|----------|
| PROJ | SCALE | DRAWN | REVIEWED |
| 2107 | NOTED | BH | JH |

NORTH & SOUTH ELEVATIONS
BUILDING 'B'

A204