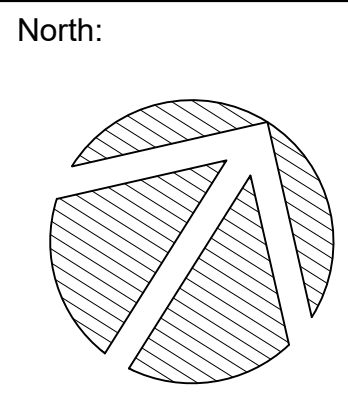


- LEGEND:**
- LARGE DECIDUOUS TREE
  - MEDIUM DECIDUOUS TREE
  - CONIFEROUS TREE
  - CRITICAL ROOT ZONE

1	ISSUED FOR REZONING	21 DEC, 2022
No.	Revision	Date



- CSW**
- Landscape Architecture
  - Urban Design
  - Site Planning
  - Recreation and Park Planning
  - Project Management

319 McRae Avenue, Suite 502, Ottawa, Ontario, K1Z 0B9  
Tel: (613) 729-4536

1. All measurements in millimeters unless specified otherwise. Do not scale drawing. All drawings to be read in conjunction with written specifications.
2. Copyright reserved. This drawing is the exclusive property of CSW Landscape Architects Ltd. and shall not be used without the consent thereof.
3. This Drawing may not be used for construction until signed by the landscape architect. It is the responsibility of the contractor to:
  - check and verify all dimensions on site;
  - report all errors and/or omissions to the landscape architect;
  - comply with all pertinent codes and by-laws;
  - check and verify locations of all underground services with all local utilities prior to any digging.

Project:  
**1640-1660 CARLING AVE**

1640-1660 CARLING AVENUE  
OTTAWA, ONTARIO

Drawing:  
**TREE INFORMATION REPORT  
EXISTING CONDITIONS**

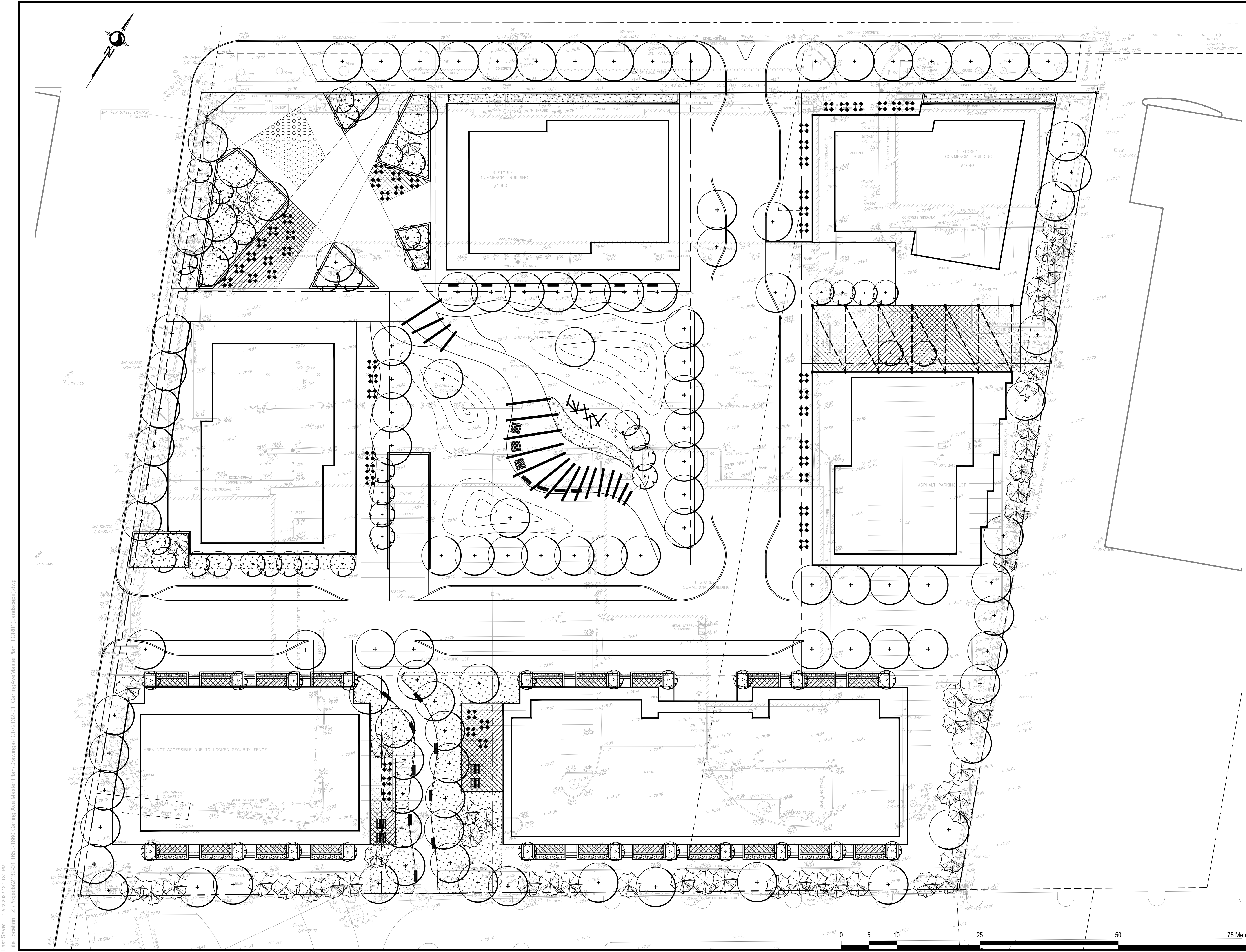
Scale: 1:300 Date: 21 DEC, 2022

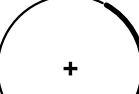


Design By: SM Drawn By: SM

Project Number: 2132-01 Sheet Number: TIR 01

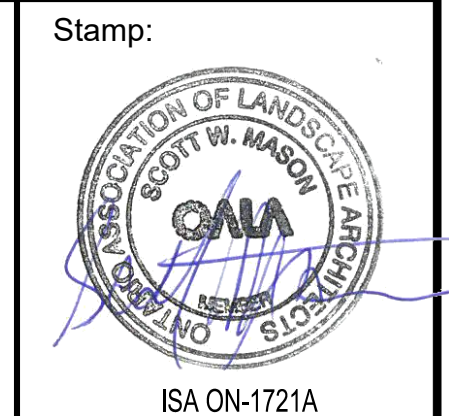
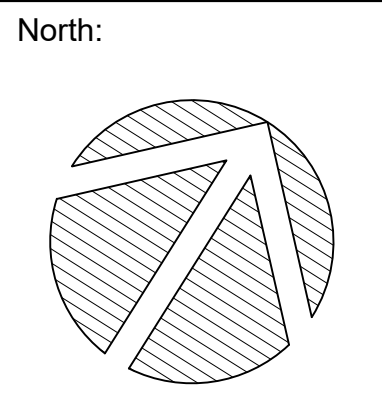
Label Save: 12/22/2022 12:15:31 PM  
 File Location: Z:\Projects\2132-01 1650-1660 Carling Ave Master Plan\Drawings\TIR\2132-01\_CarlingAveMasterPlan\_TIR01(Landscape).dwg





- LEGEND:**
-  LARGE DECIDUOUS TREE
  -  MEDIUM DECIDUOUS TREE
  -  CONIFEROUS TREE

1	ISSUED FOR REZONING	21 DEC, 2022
No.	Revision	Date



**CSW**

Landscape Architecture  
 Urban Design  
 Site Planning  
 Recreation and Park Planning  
 Project Management

319 McRae Avenue, Suite 502, Ottawa, Ontario, K1Z 0B9  
 Tel: (613) 729-4536

- All measurements in millimeters unless specified otherwise. Do not scale drawing. All drawings to be read in conjunction with written specifications.
- Copyright reserved. This drawing is the exclusive property of CSW Landscape Architects Ltd. and shall not be used without the consent thereof.
- This Drawing may not be used for construction until signed by the landscape architect. It is the responsibility of the contractor to:
  - check and verify all dimensions on site;
  - report all errors and/or omissions to the landscape architect;
  - comply with all pertinent codes and by-laws;
  - check and verify locations of all underground services with all local utilities prior to any digging.

Project:  
**1640-1660 CARLING AVE**

1640-1660 CARLING AVENUE  
 OTTAWA, ONTARIO

Drawing:  
**TREE INFORMATION REPORT  
 PROPOSED CONDITION**

Scale:	1:300	Date:	21 DEC, 2022
Design By:	SM	Drawn By:	SM
Project Number:	2132-01	Sheet Number:	TIR 02

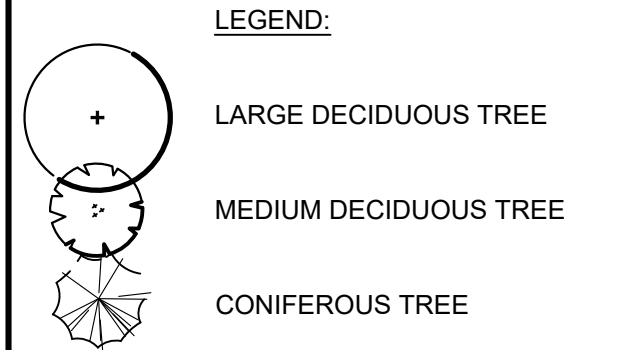
Last Save: 12/22/2022 12:15:31 PM  
 File Location: Z:\Projects\2132-01\_1640-1660\_Carling\_Ave\_Master\_Plan\Drawings\TIR\2132-01\_Carling\_Ave\_Master\_Plan\_TIR01(Landscape).dwg



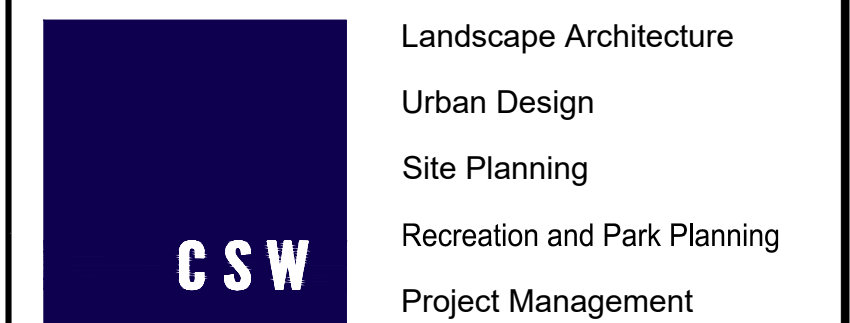
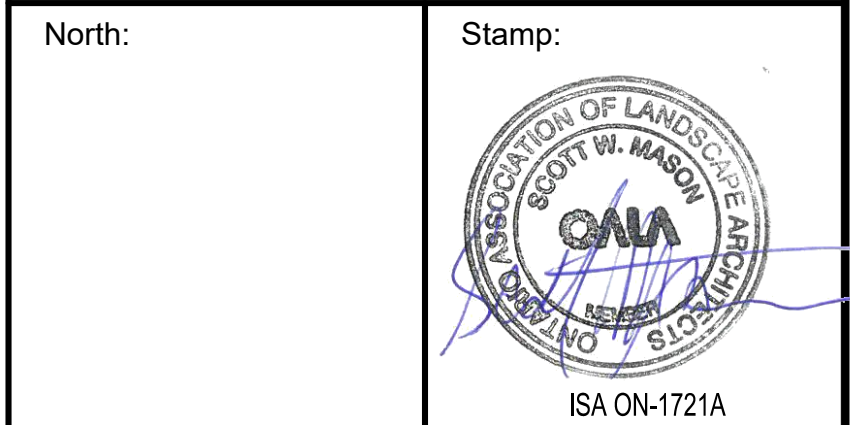
Tree #	Botanical Name	Common Name	DBH (cm)	Ownership	Condition	Comments	Arborist Recommendation	Removal Reason
1	Gleditsia Traincanthos	Honey Locust	7	City	moderate	canopy symmetrical, not pruned, single stem	REMOVE	Conflict with construction
2	Gleditsia Traincanthos	Honey Locust	5	City	moderate	canopy symmetrical, not pruned, single stem	REMOVE	Conflict with construction
3	Gleditsia Traincanthos	Honey Locust	11	City	moderate	canopy symmetrical, not pruned, single stem	REMOVE	Conflict with construction
4	Gleditsia Traincanthos	Honey Locust	12	City	moderate	canopy symmetrical, not pruned, single stem	REMOVE	Conflict with construction
5	Gleditsia Traincanthos	Honey Locust	12	City	moderate	canopy symmetrical, not pruned, single stem	REMOVE	Conflict with construction
6	Gleditsia Traincanthos	Honey Locust	15	City	moderate	canopy symmetrical, not pruned, single stem	REMOVE	Conflict with construction
7	Gleditsia Traincanthos	Honey Locust	11	City	moderate	canopy symmetrical, not pruned, single stem	REMOVE	Conflict with construction
8	Gleditsia Traincanthos	Honey Locust	13	City	moderate	canopy symmetrical, not pruned, single stem	REMOVE	Conflict with construction
9	Gleditsia Traincanthos	Honey Locust	11	City	moderate	canopy symmetrical, not pruned, single stem	REMOVE	Conflict with construction
10	Gleditsia Traincanthos	Honey Locust	12	City	moderate	canopy symmetrical, not pruned, single stem	REMOVE	Conflict with construction
11	Gleditsia Traincanthos	Honey Locust	9	City	good	Canopy symmetrical, not pruned, single stem	REMOVE	Conflict with construction
12	Gleditsia Traincanthos	Honey Locust	12	City	good	Canopy symmetrical, not pruned, single stem	REMOVE	Conflict with construction
13	Gleditsia Traincanthos	Honey Locust	15	City	good	Canopy symmetrical, not pruned, single stem	REMOVE	Conflict with construction
14	Gleditsia Traincanthos	Honey Locust	15	City	good	Canopy symmetrical, not pruned, single stem	REMOVE	Conflict with construction
15	Gleditsia Traincanthos	Honey Locust	10	City	good	Canopy symmetrical, not pruned, single stem	REMOVE	Conflict with construction
16	Gleditsia Traincanthos	Honey Locust	9	City	good	Canopy symmetrical, not pruned, single stem	REMOVE	Conflict with construction
17	Gleditsia Traincanthos	Honey Locust	8	City	poor	Canopy symmetrical, not pruned, single stem	REMOVE	Conflict with construction
18	Gleditsia Traincanthos	Honey Locust	14	City	good	Canopy symmetrical, not pruned, single stem	REMOVE	Conflict with construction
19	Gleditsia Traincanthos	Honey Locust	11	City	good	Canopy symmetrical, not pruned, single stem	REMOVE	Conflict with construction
20					missing			
21					missing			
22					missing			
23					missing			
24					missing			
25					missing			
26					missing			
27					missing			
28					missing			
29					missing			
30					missing			
31					missing			
32	Celtis occidentalis	Common Hackberry	12	private	moderate	canopy symmetrical, canopy die back 10%, not pruned, single stem	REMOVE	Conflict with construction
33	Celtis occidentalis	Common Hackberry	12	private	moderate	canopy symmetrical, canopy die back 5 %, not pruned, single stem	REMOVE	Conflict with construction
34	Quercus robur Fastigiata	Columner Oak	11	private	moderate	canopy symmetrical, canopy die back 25 %, not pruned, single stem	REMOVE	Conflict with construction
35	Amelanchier canadensis	Serviceberry	7	private	moderate	canopy symmetrical, not pruned, not single stem,	REMOVE	Conflict with construction
36	Quercus rubra	Red Oak	15	private	good	canopy symmetrical, not pruned, single stem,	REMOVE	Conflict with construction
37	Celtis occidentalis	Common Hackberry	20	private	good	canopy symmetrical, not pruned, single stem	REMOVE	Conflict with construction
38	Quercus rubra	Red Oak	20	private	good	canopy symmetrical, not pruned, single stem	REMOVE	Conflict with construction
39	Picea glauca	White Spruce	~15	private	good	canopy symmetrical, single stem	REMOVE	Conflict with construction
40	Picea glauca	White Spruce	~15	private	good	canopy symmetrical, single stem	REMOVE	Conflict with construction
41	Picea glauca	White Spruce	~15	private	good	canopy symmetrical, single stem	REMOVE	Conflict with construction
42	Picea glauca	White Spruce	~15	private	good	canopy symmetrical, single stem	REMOVE	Conflict with construction
43	Acer Rubrum	Red Maple	14	private	moderate	canopy symmetrical, canopy die back 20%, not pruned, single stem, decay bark at trunk/limbs	REMOVE	Conflict with construction
44	Picea glauca	White Spruce	~15	private	good	canopy symmetrical, single stem	REMOVE	Conflict with construction
45	Picea glauca	White Spruce	~15	private	good	canopy symmetrical, single stem	REMOVE	Conflict with construction
46	Picea glauca	White Spruce	~15	private	good	canopy symmetrical, single stem	REMOVE	Conflict with construction
47	Picea glauca	White Spruce	~15	private	good	canopy symmetrical, single stem	REMOVE	Conflict with construction
48	Picea glauca	White Spruce	~15	private	good	canopy symmetrical, single stem	REMOVE	Conflict with construction
49	Picea glauca	White Spruce	~15	private	good	canopy symmetrical, single stem	REMOVE	Conflict with construction
50	Picea glauca	White Spruce	7	private	good	canopy symmetrical, single stem	REMOVE	Conflict with construction
51	Picea glauca	White Spruce	25	private	good	canopy symmetrical, not pruned, single stem, co doinant leaders 2 @ 2 meters above grade	REMOVE	Conflict with construction
52	Picea glauca	White Spruce	15	private	poor	canopy asymmetrical, canopy die back 75%, not pruned multi stem, co dominant leaders 2 @ 2 m above grade	REMOVE	Conflict with construction
53	Picea glauca	White Spruce	20	private	good	canopy symmetrical, not pruned, single stem	REMOVE	Conflict with construction
54	Acer Rubrum	Red Maple	10	private	poor	canopy asymmetrical, canopy die back 50%, single stem, not pruned	REMOVE	Conflict with construction
55					dead			
56	Quercus rubra	Red Oak	11	private	good	canopy symmetrical, pruned, single stem	REMOVE	Conflict with construction
57	Celtis occidentalis	Common Hackberry	7	private	good	canopy symmetrical, not pruned, single stem	REMOVE	Conflict with construction
58	Pinus resinosa	Red Pine	15	private	good	canopy symmetrical, not pruned, single stem	REMOVE	Conflict with construction

Tree #	Botanical Name	Common Name	DBH (cm)	Ownership	Condition	Comments	Arborist Recommendation	Removal Reason
59	Pinus resinosa	Red Pine	15	private	good	canopy symmetrical, not pruned, single stem	REMOVE	Conflict with construction
60	Pinus resinosa	Red Pine	18	private	good	canopy symmetrical, pruned, single stem	REMOVE	Conflict with construction
61	Pinus resinosa	Red Pine			dead			
62	Pinus resinosa	Red Pine	20	private	good	canopy symmetrical, not pruned, single stem	REMOVE	Conflict with construction
63	Pinus strobus	White Pine	7	private	good	canopy symmetrical, not pruned, single stem	REMOVE	Conflict with construction
64					missing			
65	Celtis occidentalis	Common Hackberry	7	private	poor	canopy symmetrical, canopy die back 60%, not pruned, single stem, girdled at trunk	REMOVE	Conflict with construction
66	Ulmus	Elm	11	private	good	canopy symmetrical, not pruned, single stem	REMOVE	Conflict with construction
67	Robinia pseudoacacia	Black Locust	15	private	good	canopy symmetrical, not pruned, single stem	REMOVE	Conflict with construction
68	Robinia pseudoacacia	Black Locust	30	private	moderate	canopy symmetrical, not pruned, single stem	REMOVE	Conflict with construction
69	Robinia pseudoacacia	Black Locust	30	private	moderate	canopy symmetrical, not pruned, single stem	REMOVE	Conflict with construction
70	Robinia pseudoacacia	Black Locust	40	Adjacent property	moderate	canopy symmetrical, pruned, single stem, growing into chain link fence	REMAIN	
71	Robinia pseudoacacia	Black Locust	35	Adjacent property	moderate	canopy symmetrical, not pruned, single stem, growing in the chain link fence	REMAIN	
72	Quercus rubra	Red Oak	18	private	good	canopy symmetrical, not pruned, single stem	REMOVE	Conflict with construction
73	Quercus palustris	Pin Oak	15	private	moderate	canopy symmetrical, not pruned, single stem	REMOVE	Conflict with construction
74	Robinia pseudoacacia	Black Locust	45	Adjacent property	moderate	canopy symmetrical, not pruned, single stem, growing	REMAIN	
75	Acer Rubrum	Red Maple	13	private	good	canopy symmetrical, not pruned, single stem	REMOVE	Conflict with construction
76	Celtis occidentalis	Common Hackberry	12	private	moderate	canopy symmetrical, canopy die back 25%, not pruned, single stem	REMOVE	Conflict with construction
77	Acer negundo	Manatoba Maple	40	Adjacent property	poor	canopy asymmetrical, canopy die back 40%, not pruned, single stem codominant leaders 2 @ 2 m above grade, corrected growing into fence	REMAIN	
78	Ulmus	Elm	5	private	moderate	canopy symmetrical, not pruned, single stem, girdle and tie	REMOVE	Conflict with construction
79	Ulmus	Elm	18	private	good	canopy symmetrical, not pruned, single stem	REMOVE	Conflict with construction
80	Ulmus	Elm	15	private	good	canopy symmetrical, not pruned, single stem	REMOVE	Conflict with construction
81	Ulmus	Elm	14	private	good	canopy symmetrical, not pruned, single stem	REMOVE	Conflict with construction
82	Celtis occidentalis	Common Hackberry	12	private	moderate	canopy symmetrical, canopy die back 25%, not pruned, single stem	REMOVE	Conflict with construction
83	Celtis occidentalis	Common Hackberry	10	private	moderate	canopy symmetrical, canopy die back 25%, not pruned, single stem	REMOVE	Conflict with construction
84	Ulmus	Elm	17	private	moderate	canopy symmetrical, canopy die back 10 %, not pruned, single stem	REMOVE	Conflict with construction
85	Ulmus	Elm	13	private	good	canopy symmetrical, not pruned, single stem	REMOVE	Conflict with construction
86	Acer Rubrum	Red Maple	14	private	moderate	canopy symmetrical, canopy die back 15 %, not pruned, single stem	REMOVE	Conflict with construction
87					missing			
88	Ulmus	Elm	18	private	good	canopy symmetrical, not pruned, single stem	REMOVE	Conflict with construction
89	Ulmus	Elm	18	private	good	canopy symmetrical, not pruned, single stem	REMOVE	Conflict with construction
90	Ulmus	Elm	18	private	good	canopy symmetrical, not pruned, single stem	REMOVE	Conflict with construction
91					missing			
92	Pinus Resinosa	Red Pine	20	private	good	canopy symmetrical, not pruned, single stem	REMOVE	Conflict with construction
93	Pinus Resinosa	Red Pine	20	private	good	canopy symmetrical, not pruned, single stem	REMOVE	Conflict with construction
94	Ulmus	Elm	20	private	good	canopy symmetrical, not pruned, single stem	REMOVE	Conflict with construction
95	Ulmus	Elm	20	private	good	canopy symmetrical, not pruned, single stem	REMOVE	Conflict with construction
96	Ulmus	Elm	20	private	good	canopy symmetrical, not pruned, single stem	REMOVE	Conflict with construction
97	Ulmus	Elm	20	private	good	canopy symmetrical, pruned, single stem	REMOVE	Conflict with construction
98	Amelanchier canadensis	Service berry	11	private	good	canopy symmetrical, single stem	REMOVE	Conflict with construction
99	Malus	Crab Apple	17	private	good	canopy symmetrical, not pruned, single stem, leaning	REMOVE	Conflict with construction
100	Malus	Crab Apple	15	private	good	canopy symmetrical, not pruned, single stem	REMOVE	Conflict with construction

SUMMARY:  
TREES PROPOSED FOR REMOVAL: 95  
TREES PROPOSED FOR INSTALL: 231



1	ISSUED FOR REZONING	21 DEC, 2022
No.	Revision	Date



319 McRae Avenue, Suite 502, Ottawa, Ontario, K1Z 0B9  
Tel: (613) 729-4536

- All measurements in millimeters unless specified otherwise. Do not scale drawing. All drawings to be read in conjunction with written specifications.
- Copyright reserved. This drawing is the exclusive property of CSW Landscape Architects Ltd. and shall not be used without the consent thereof.
- This Drawing may not be used for construction until signed by the landscape architect. It is the responsibility of the contractor to:
  - check and verify all dimensions on site;
  - report all errors and/or omissions to the landscape architect;
  - comply with all pertinent codes and by-laws;
  - check and verify locations of all underground services with all local utilities prior to any digging.

Project:  
**1640-1660 CARLING AVE**  
1640-1660 CARLING AVENUE  
OTTAWA, ONTARIO

Drawing:  
**TREE INFORMATION REPORT**

Scale:	Date:
Design By:	Drawn By:
Project Number:	Sheet Number:

21 DEC, 2022  
SM SM  
2132-01 TIR 03