

CARLING AVENUE



Stantec Geomatics Ltd.
300-131 Clyde Avenue
Ottawa ON
Tel. 613.722.4420
www.stantec.com

© Copyright 2022 Stantec Geomatics Ltd. The reproduction, alteration or use of this REPORT in whole or in part without the express permission of Stantec Geomatics Ltd. is STRICTLY PROHIBITED.

TOPOGRAPHIC PLAN OF SURVEY
PART OF LOT 'I'
CONCESSION 'A' (RIDEAU FRONT)
(GEOGRAPHIC TOWNSHIP OF NEPEAN)
CITY OF OTTAWA
Scale 1:250

METRIC CONVERSION
DISTANCES AND COORDINATES SHOWN ON THIS PLAN ARE IN METRES AND CAN BE CONVERTED TO FEET BY DIVIDING BY 0.3048

BEARING NOTE
BEARINGS ARE GRID, DERIVED FROM CAN-NET VRS NETWORK GPS OBSERVATIONS ON NCC HORIZONTAL CONTROL MONUMENTS 19773035 AND 1980191, CENTRAL MERIDIAN, 76° 30' WEST LONGITUDE NAD83, NAD83 (ORIGINAL).

ELEVATION NOTE
ELEVATIONS SHOWN HEREON ARE GEODETIC [CGVD-1928-1978] AND ARE DERIVED FROM VERTICAL CONTROL MONUMENT NO. 019480397 ELEVATION=76.544m.

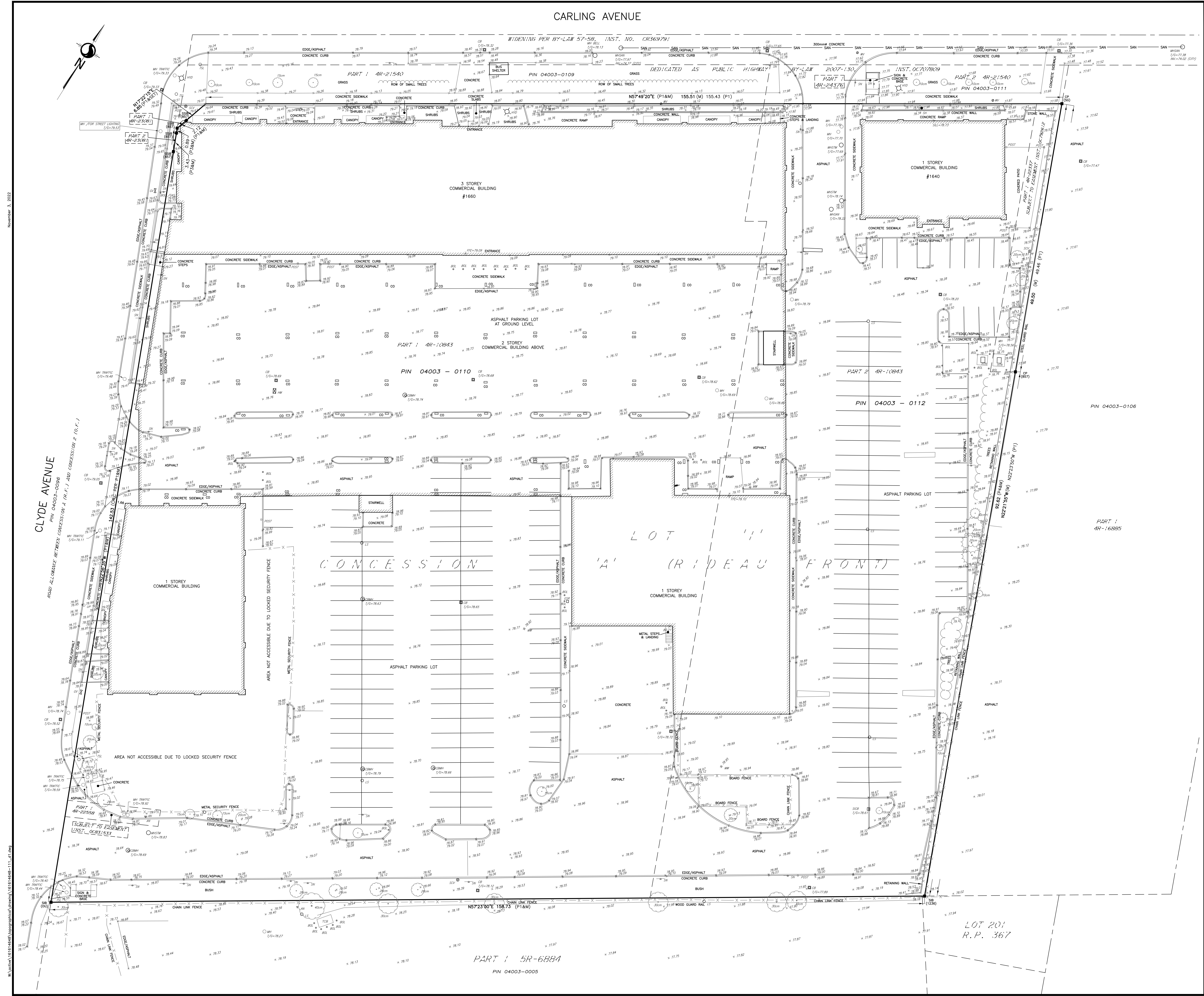
LEGEND table with columns: SYMBOL, DENOTES, FOUND MONUMENTS. Includes symbols for ACU, ANCHOR, AP, AIR PUMP, ANTENNA, BOREHOLE, etc.

UNDERGROUND TELEPHONE, WATERMAIN, GASMAIN, STORM SEWER, SANITARY SEWER symbols and labels.

SURVEYOR'S CERTIFICATE
I CERTIFY THAT:
1. THE SURVEY WAS COMPLETED ON THE 24TH DAY OF OCTOBER, 2022.

DATE: BRIAN J. WEBSTER
ONTARIO LAND SURVEYOR

DRAWN: ME CHECKED: PM BY: FIELD: CA/ES PROJECT NO: 16161468-111



November 1, 2022

Vertical text on the left margin: M:\Projects\16161468-111\Drawings\16161468-111\_01.dwg