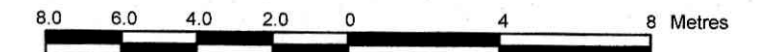


LOT 35 (South Nepean Street) AND PART OF LOT 3 (East Bank Street) AND PART OF LOT 35 (North Lisgar Street) REGISTERED PLAN 2996 CITY OF OTTAWA

Surveyed by Annis, O'Sullivan, Vollebakk Ltd.

Scale 1 : 200



Metric

DISTANCES SHOWN ON THIS PLAN ARE IN METRES AND CAN BE CONVERTED TO FEET BY DIVIDING BY 0.3048

Surveyor's Certificate

I CERTIFY THAT:

- 1. This survey and plan are correct and in accordance with the Surveys Act and the Surveyors Act and the regulations made under them.
2. The survey was completed on the 29th day of July, 2022.

Aug 4/22 Date

T. Hartwick Ontario Land Surveyor

Notes & Legend

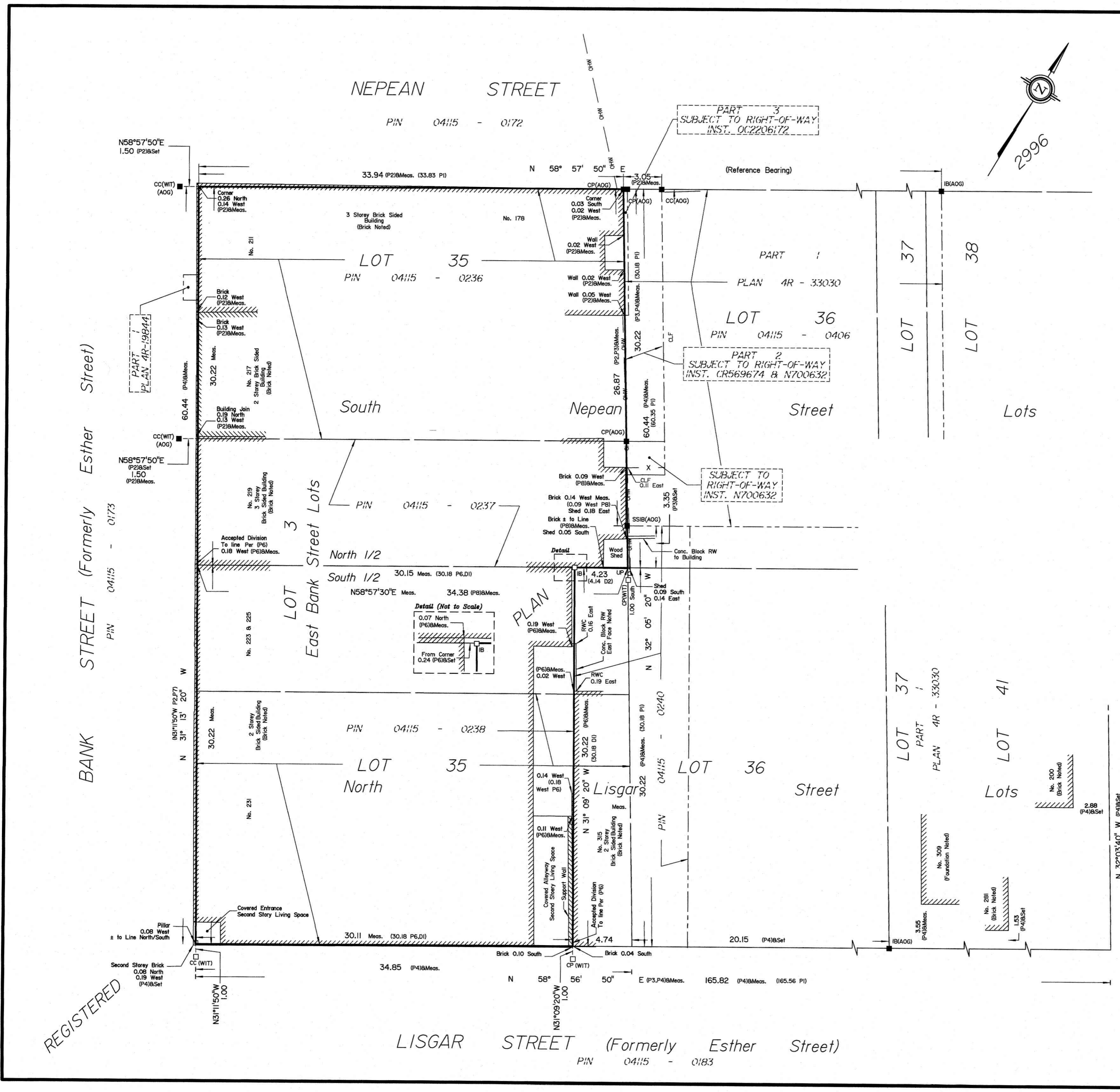
- Denotes Survey Monument Planted
Survey Monument Found
SIB Standard Iron Bar
SSIB Short Standard Iron Bar
IB Iron Bar
CC Cut Cross
CP Concrete Pin
(WIT) Witness
Meas. Measured
Conc. Concrete
(AOG) Annis, O'Sullivan, Vollebakk Ltd.
(P1) Registered Plan 2996
(P2) (AOG) Plan dated May 5, 2022
(P3) Plan 4R-33030
(P4) (AOG) Plan dated April 27, 1989
(P5) (725) Plan dated November 22, 1967
(P6) (647) Plan dated December 22, 1978
(P7) Plan 4R-19844
(P8) (AOG) Plan dated August 25, 1981
(DI) Instrument CR382508
CLF Chain Link Fence
UP Utility Pole
OHV Overhead Wires
RWC Concrete Retaining Wall

ASSOCIATION OF ONTARIO LAND SURVEYORS PLAN SUBMISSION FORM V-31710. THIS PLAN IS NOT VALID UNLESS IT IS AN EMBOSSED ORIGINAL COPY ISSUED BY THE SURVEYOR in accordance with Regulation 1026, Section 29 (3).

Bearings are grid, derived from the southerly limit of Nepean Street, shown to be N58°57'50"E on Plan 4R-33030 and are referred to the Central Meridian of MTM Zone 9 (76°30' West Longitude) NAD-83 (original).

For bearing comparison purposes, a rotation of 0°05'40" counter-clockwise was applied to bearings on (P4).

© Annis, O'Sullivan, Vollebakk Ltd., 2022. THIS PLAN IS PROTECTED BY COPYRIGHT. ANNIS, O'SULLIVAN, VOLLEBEKK LTD. 14 Concourse Gate, Suite 500 Nepean, Ont. K2E 7S6 Phone: (613) 727-0850 / Fax: (613) 727-1079 Email: Nepean@aovltd.com Ontario Land Surveyors Job No. 22902-22 SLP L135 PL13835 RP2996 T 03 CA



REGISTERED

Y:\0202\2996-22_Survey\178_Nepean Street_Topo_T1\Drawings\22902-22_SLP_L135_PL13835_RP2996_T 03.dwg