

**GENERAL SITE PLAN NOTES:**

**TOPOGRAPHICAL INFORMATION:**  
PART OF LOT 1 CONCESSION 8 GEOGRAPHIC TOWNSHIP OF CUMBERLAND CITY OF OTTAWA  
SURVEY BY: ANNIS, O'SULLIVAN, VOLLEBEKK LTD.

**SITE AND BUILDING DATA:**

SITE AREA	12984.00 m <sup>2</sup>	139758.61 ft <sup>2</sup>
NEW BUILDING AREA	5623.51 m <sup>2</sup>	60530.97 ft <sup>2</sup>
NEW BUILDING HEIGHT	14.4M	
(*1) GROSS BUILDING AREA	16999.51 m <sup>2</sup>	182981.18 ft <sup>2</sup>
(*2) GROSS BUILDING AREA	16080.44 m <sup>2</sup>	173088.38 ft <sup>2</sup>

**GENERAL NOTES:**

- FOR PAVED SURFACES, GRADING, SITE SERVICING, DRAINAGE EROSION AND SEDIMENT CONTROL, REFER TO CIVIL DRAWINGS.
- FOR PLANTING DETAILS, REFER TO LANDSCAPE DRAWINGS.

**GROSS BUILDING AREA:**

- \* (ONTARIO BUILDING CODE DEFINITION): THE TOTAL AREA OF ALL FLOORS ABOVE GRADE MEASURED BETWEEN THE OUTSIDE SURFACES OF EXTERIOR WALLS.
- \* GROSS FLOOR AREA (CITY OF OTTAWA ZONING BYLAW DEFINITION FOR THE PURPOSE OF DETERMINING PARKING REQUIREMENTS): GROSS LEASABLE FLOOR AREA MEANS THE TOTAL FLOOR AREA DESIGNED FOR TENANT OCCUPANCY AND EXCLUSIVE USE, MEASURED FROM THE INTERIORS OF OUTSIDE WALLS EXCLUDING FLOOR AREA OCCUPIED BY PARTY WALLS AND EXCLUDING INTERIOR PARKING / LOADING (DRIVE THRU).
- FLOOR AREA OCCUPIED BY SHARED MECHANICAL, SERVICE AND ELECTRICAL EQUIPMENT THAT SERVE THE BUILDING. (BY-LAW 2008-326)
- COMMON HALLWAYS, CORRIDORS, STAIRWELLS, ELEVATOR SHAFTS AND OTHER VOIDS, STEPS AND LANDINGS. (BY-LAW 2008-326)
- BICYCLE PARKING, MOTOR VEHICLE PARKING OR LOADING FACILITIES, COMMON LAUNDRY, STORAGE AND WASHROOM FACILITIES THAT SERVE THE BUILDING OR TENANTS.
- COMMON STORAGE AREAS THAT ARE ACCESSORY TO THE PRINCIPAL USE OF THE BUILDING. (BY-LAW 2008-326)
- COMMON AMENITY AREA AND PLAY AREAS ACCESSORY TO A PRINCIPLE USE ON THE LOT; AND (BY-LAW 2008-326) LIVING QUARTERS FOR A CARETAKER OF THE BUILDING.

**ZONING:**

ZONING DESIGNATIONS (PART 10):  
GM ZONE

**ZONING PROVISIONS**

MINIMUM LOT WIDTH (m):	30 m
MINIMUM LOT AREA (m <sup>2</sup> ):	4,000 m <sup>2</sup>
MINIMUM FRONT YARD SETBACK:	10 m
MINIMUM REAR YARD SETBACK:	10 m
MINIMUM INTERIOR SIDE YARD SETBACK:	3 m
MINIMUM CORNER SIDE YARD SETBACK:	6 m

**BUILDING HEIGHT**

MAXIMUM (GM ZONES): 18 m  
PROPOSED: 14 m

**LANDSCAPING (SECTION 110):**

REQUIRED FRONT AND CORNER SIDE YARDS TO BE LANDSCAPED, EXCEPT FOR DRIVEWAYS CROSSING THE FRONT OR CORNER SIDE YARD LEADING TO PARKING AREA

LANDSCAPING / PARKING	PARKING LOT MIN. LANDSCAPE % ALLOWED	LANDSCAPING PROVISION %
5300.00 m <sup>2</sup>	15%	38 %

**VEHICLE PARKING (SECTION 101):**

WAREHOUSE (0.8/100M) FIRST 5000m<sup>2</sup>: (5,000/100m<sup>2</sup>) x 0.8 = 40  
WAREHOUSE (0.4/100M) AFTER 5000m<sup>2</sup>: ((11,080/100m<sup>2</sup>) x 0.4 = 45

**PARKING FOR THE PHYSICALLY DISABLED (PARKING BYLAW 2003-530, SECTION 122):**

MINIMUM REQUIRED:	85
NUMBER PROVIDED:	85

**(\*) PARKING PROVIDED:**

PARKING BAY TYPE:	No.
LS-NO-PARK-LINES	1
P-5.2X2.6	51
P-BF-5.2X3.4-TYPE-A	1
P-BF-5.2X2.6-TYPE-B	2
Grand total	55

**LOADING BAY AREA**

LOADING BAY TYPE:	No.
LOAD-2.6*7M	6
LOAD-3.6*7M	1
Grand total	7

**BICYCLE PARKING (SECTION 111):** 1 PER 200m<sup>2</sup> (WAREHOUSE)

MINIMUM REQUIRED: 9  
NUMBER PROVIDED: 10

**LOADING ZONE (SECTION 113):**

MINIMUM REQUIRED: 2  
NUMBER PROVIDED: 2

**GROSS FLOOR AREA (GFA) - INTERIOR LOADING**

INT. LOADING & PARKING	919.07 m <sup>2</sup>	9892.80 ft <sup>2</sup>
------------------------	-----------------------	-------------------------

**GROSS FLOOR AREA (GFA 2) - EXCL-INTERIOR LOADING**

1. GFA-RECEPTION / RETAIL	981.04 m <sup>2</sup>	10559.83 ft <sup>2</sup>
1-3. GFA-SELF-S. SELF-STORAGE	316.78 m <sup>2</sup>	3409.77 ft <sup>2</sup>
1-3. GFA-SELF-ST.	14615.14 m <sup>2</sup>	157316.01 ft <sup>2</sup>
GFA-MECH (+MEZZ.)	167.48 m <sup>2</sup>	1802.77 ft <sup>2</sup>
GROSS BUILDING AREA	16999.51 m <sup>2</sup>	182981.18 ft <sup>2</sup>

**GENERAL NOTES**

- DO NOT SCALE DRAWINGS; ONLY FIGURED DIMENSIONS ARE TO BE USED. WHERE DOUBT EXISTS: FILE REQUEST FOR INTERPRETATION AND REQUEST CLARITY.
- IT IS THE RESPONSIBILITY OF THE GENERAL CONTRACTOR TO VERIFY DIMENSIONS ON SITE. REPORT DISCREPANCIES TO THE ARCHITECT PROMPTLY.
- GENERAL CONTRACTOR TO TAKE INTO ACCOUNT CONSTRUCTION TOLERANCE; GENERAL CONTRACTOR TO COORDINATE THE WORK OF DIFFERENT TRADES TO COMPLY WITH DESIGN INTENT.
- ALL WORK DESCRIBED IN THESE DRAWINGS AND SPECIFICATIONS ARE TO COMPLY WITH THE CURRENT EDITION OF THE ONTARIO BUILDING CODE (2010) INCLUDING MOST RECENT AMENDMENTS.
- DRAWINGS AND SPECIFICATIONS ARE COMPLEMENTARY AND ARE TO BE READ TOGETHER.

**COPYRIGHT**

THIS DRAWING IS AN INSTRUMENT OF SERVICE AND IS PROTECTED BY COPYRIGHT AND IS THE SOLE PROPERTY OF DRESSEN CARDINAL ARCHITECTS INC. COPIES, INCLUDING ELECTRONIC COPIES, MAY ONLY BE USED FOR THE PURPOSE INTENDED, FOR THE SINGLE PROJECT FOR WHICH THEY ARE ISSUED AND MAY NOT BE OFFERED FOR SALE OR TRANSFER WITHOUT THE EXPRESS WRITTEN PERMISSION OF THE ARCHITECT.

**ISSUE RECORD**

NO.	DESCRIPTION	DATE
1	ISSUE FOR REVIEW	2022-05-19
2	ISSUE FOR REVIEW	2022-12-22
3	ISSUE FOR SPA	2023-02-06

**CLIENT**

**DYMON SELF-STORAGE**  
2-1830 WALKLEY ROAD, OTTAWA, ON  
(T) 613-247-0888

**CONSULTANTS**

**FOTENN PLANNING + DESIGN**  
396 COOPER STREET, SUITE 300, OTTAWA ON  
PLANNING & URBAN DESIGN  
(T) 613-730-5709

**D B GRAY ENGINEERING INC.**  
700 LONG POINT CIR, GLOUCESTER, ON.  
CIVIL ENGINEER  
(T) 613-425-8044

**TACT ARCHITECTURE INC.**  
680R COLLEGE STREET (REAR LANE) TORONTO ON.  
DESIGN ARCHITECT  
(T) 416-516-1949

**BRUMER ENGINEERING SERVICES LTD**  
25-120 WEST BEAVER CREEK ROAD, RICHMOND HILL ON  
MECHANICAL CONSULTANTS  
(T) 905-771-7798

**HUDSON ENGINEERING**  
2901 STEELES AVE W UNIT 26, TORONTO, ON  
ELECTRICAL CONSULTANTS  
(T) 416-663-5470

**D+M STRUCTURAL LTD.**  
110-333 PRESTON ST. OTTAWA, ON  
STRUCTURAL CONSULTANTS  
(T) 613 651-9490

**A GROUP OF ARCHITECTS**  
201-1339 WELLINGTON ST. W. OTTAWA ON K1Y 3S8  
WWW.ARCHITECTSDCA.COM 613.725.2294

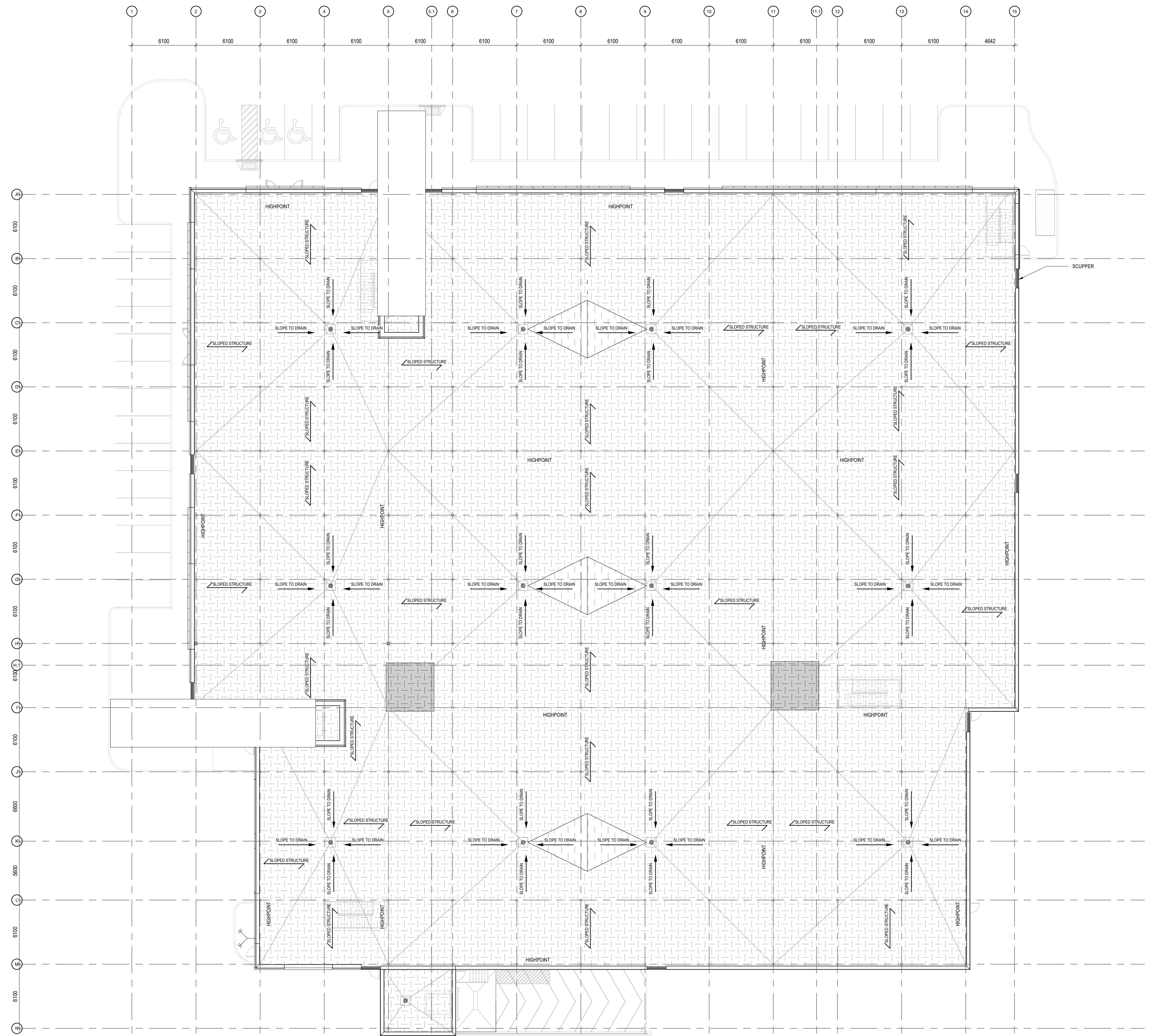
**PROJECT TITLE**  
DYMON 5210 INNES ROAD

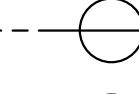
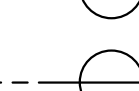
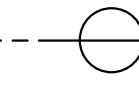

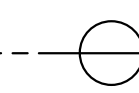



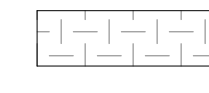


**DRAWING TITLE**  
SITE PLAN

DATE	DRAWN	JOB NO.	DRAWING NO.
APRIL 2022	SD	3465	A100
SCALE	REVIEWED		
As indicated	TD		

**ARCHITECTURAL**

**1 SITE PLAN**  
SCALE: 1:250  
(APPROXIMATE LOCATION)



ROOF LEGEND:	
RD	ROOF DRAIN SEE 
RH	ROOF HATCH SEE 
RTU	ROOF TOP UNITS SEE 
GP	GAS PIPE SEE 
C.S.C.P. 1	CONT. 1835mm WIDE SCUPPER AT RECESSED VERTICAL IMP SEE 
C.S.C.P. 2	CONT. 1835mm WIDE SCUPPER SEE 
SCP. 3	THRU PARAPET SCUPPER AT HORIZ. IMP SEE 
	762mm (2'-6") TPO WALKWAY. SEE SPECIFICATIONS
	ROOF INSULATION OVER SLOPED STRUCTURE
	SLOPED INSULATION
	ROOF OVER ELEVATOR SHAFT. SEE ELEVATOR DETAILS

GENERAL NOTES:		
1.	TPO WALKWAYS SHOWN FOR PRONG TO COORDINATE LOCATION OF TPO WALKWAY @ SIDE OF RTUS WITH ACCESS PANELS	
2.	REFER TO MECHANICAL DRAWINGS FOR GAS LINE AND PLUMBING MECHANICAL PENETRATIONS. SEE 2.6.7/AS41	
3.	SEE STRUCTURAL GAS FITTER RESPONSIBLE FOR CONFIRMING SEISMIC	
4.	ALL PARAPET HEIGHTS RELATE TO GROUND FLOOR LEVEL SET AT 0'0" A.F.F.	
5.	SEE TYPICAL ROOF DETAILS ON DRAWING AS41	
6.	ROOF SCUPPERS MAX. A.F.F. 30m AROUND PERIMETER	
7.	ROOFING CONTRACTOR AND THE STEEL SUPPLIER MUST REVIEW AND COORDINATE WITH THE ARCHITECTURAL AND MECHANICAL DRAWINGS FOR SUSPENSION OF UNITS AND ROOF PENETRATIONS	
8.	762mm x 150mm (2'6" x 20") THERMALLY BROKEN INSULATED ROOF HATCH ON QUADRANTAL SYSTEM ON 2" x 2" CONCRETE PAVES. SEE AS48	
9.	FUTURE SOLAR PANEL SYSTEM. REFER TO MANUFACTURER'S AND/OR ELECTRICAL ENGINEER'S DRAWINGS. REFER TO DETAIL 10/AS41	

COPYRIGHT		
THIS DRAWING IS AN INSTRUMENT OF SERVICE AND IS PROTECTED BY COPYRIGHT AND IS THE SOLE PROPERTY OF DRESSEN CARDINAL ARCHITECTS INC. COPIES INCLUDING ELECTRONIC COPIES, MAY ONLY BE USED FOR THE PURPOSE INTENDED FOR THE SINGLE PROJECT FOR WHICH THEY ARE ISSUED AND MAY NOT BE OFFERED FOR SALE OR TRANSFER WITHOUT THE EXPRESS WRITTEN PERMISSION OF THE ARCHITECT.		

ISSUE RECORD		
NO.	DESCRIPTION	DATE
1	ISSUE FOR REVIEW	2022-05-19
2	ISSUE FOR SPA	2023-02-06

**CLIENT**  
**DYMON SELF-STORAGE**  
 2-1830 WALKLEY ROAD, OTTAWA, ON  
 (T) 613-247-0888

**CONSULTANTS**  
**FOTENN PLANNING + DESIGN**  
 396 COOPER STREET, SUITE 300, OTTAWA ON  
 PLANNING & URBAN DESIGN  
 (T) 613-730-5709


**D B GRAY ENGINEERING INC.**  
 700 LONG POINT CIR, GLOUCESTER, ON.  
 CIVIL ENGINEER  
 (T) 613-425-8044

**TACT ARCHITECTURE INC.**  
 680R COLLEGE STREET (REAR LANE) TORONTO ON.  
 DESIGN ARCHITECT  
 (T) 416-516-1949

**BRUMER ENGINEERING SERVICES LTD**  
 25-120 WEST BEAVER CREEK ROAD, RICHMOND HILL ON  
 MECHANICAL CONSULTANTS  
 (T) 905-771-7798

**HUDSON ENGINEERING**  
 2901 STEELES AVE W UNIT 26, TORONTO, ON  
 ELECTRICAL CONSULTANTS  
 (T) 416-663-5470

**D+M STRUCTURAL LTD.**  
 110-333 PRESTON ST. OTTAWA, ON  
 STRUCTURAL CONSULTANTS  
 (T) 613 651-9490



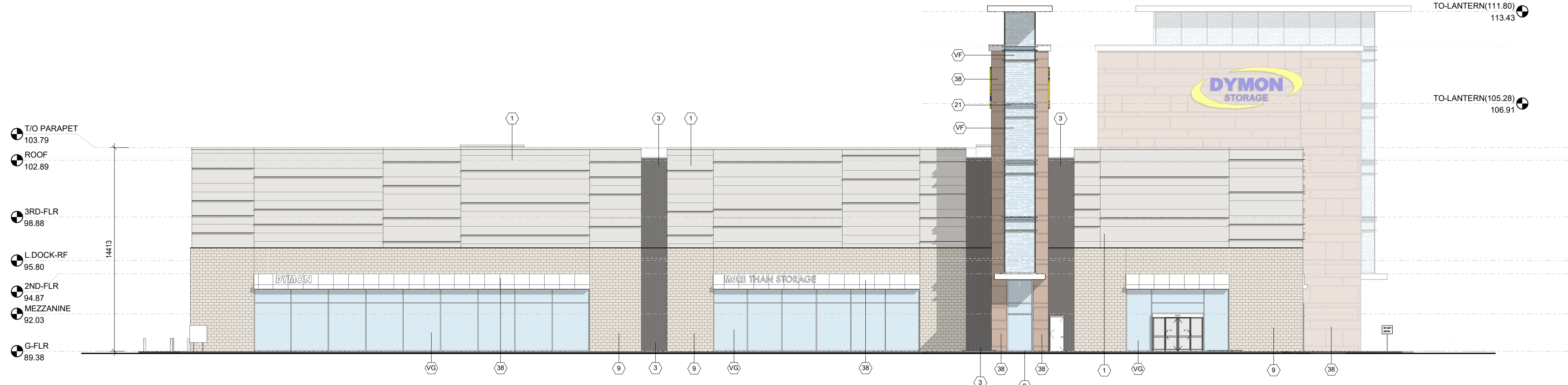
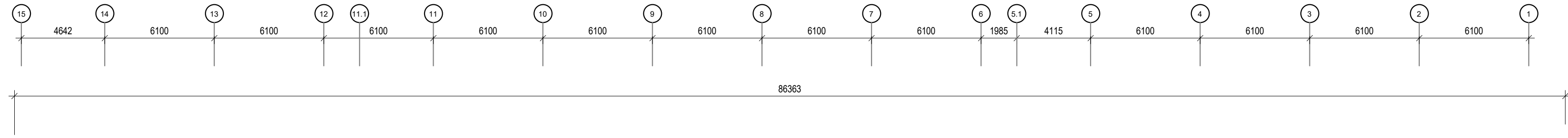
**A GROUP OF ARCHITECTS**  
 201-1339 WELLINGTON ST. W. OTTAWA ON K1Y 3B8  
 WWW.ARCHITECTSDCA.COM 613.725.2294

PROJECT TITLE  
**DYMON 5210 INNES ROAD**

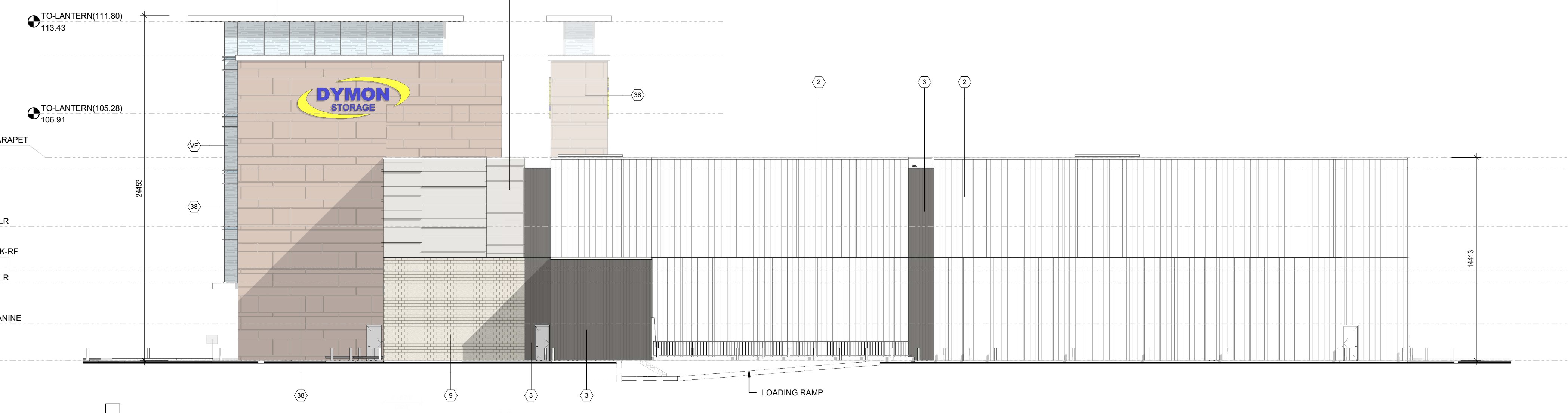
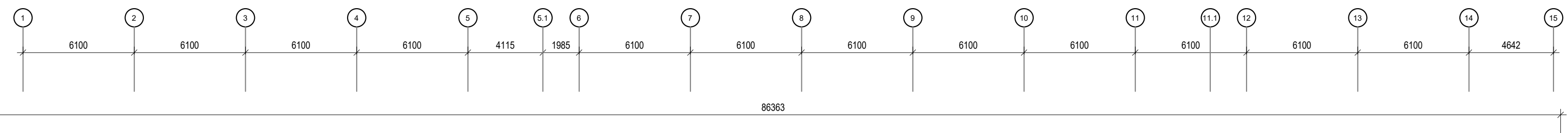
DRAWING TITLE  
**ROOF PLAN**

DATE	DRAWN	JOB NO.	DRAWING NO.
APRIL 2022	SD	3465	A205
SCALE	REVIEWED		
As indicated	TD		

**ARCHITECTURAL**



1 NORTH ELEVATION  
SCALE: 1: 200



2 SOUTH ELEVATION  
SCALE: 1: 200

- 1 PRE-MANUFACTURED INSULATED METAL PANEL SYSTEM, HORIZONTAL ORIENTATION, KINGSFAN MINI MICRO-RIB PROFILE, COLOUR: PEWTER
- 1A PRE-MANUFACTURED INSULATED METAL PANEL SYSTEM, HORIZONTAL ORIENTATION, KINGSFAN MINERAL FIBRE MINI MICRO-RIB PROFILE, COLOUR: PEWTER
- 2 PRE-MANUFACTURED INSULATED METAL PANEL SYSTEM, VERTICAL ORIENTATION, KINGSFAN EMBROSSED SHADOWLINE PROFILE, COLOUR: PEWTER
- 3 PRE-MANUFACTURED INSULATED METAL PANEL SYSTEM, VERTICAL ORIENTATION, KINGSFAN EMBROSSED SHADOWLINE PROFILE, COLOUR: DARK BRONZE
- 3A PRE-MANUFACTURED INSULATED METAL PANEL SYSTEM, VERTICAL ORIENTATION, KINGSFAN MINERAL FIBRE SHADOWLINE PROFILE, COLOUR: DARK BRONZE
- 4 KINGSFAN ACCENT FIN SHAPE, 'BLADE' EXTRUSION (F) COLOUR: PEWTER
- 5 PRE-FINISHED METAL FLASHING JOINT
- 6 TYPICAL IMP JOINT, REVEALS AS PER MANUFACTURERS' RECOMMENDATIONS
- 7 12" VERTICAL REVEAL JOINT FACTORY FOLDED (CW TRIMLESS ENDS AND RECESSED RUBBER GASKET) IN IMP SYSTEM, INSTALL REVEALS AS PER MANUFACTURERS' RECOMMENDATIONS. REFER TO DETAIL 8 / ASD1
- 8 POURED CONCRETE
- 9 (11-0871) / (05-0871) / (B-0871) ARRIS CRAFT ADAR LIMESTONE ARCHITECTURAL MASONRY UNIT, PATTERN: SPADES, FINISH: P.N.E DRESSED RUNNING BOND (REFER TO SPECIFICATIONS)
- 10 BACKLIT GLASS WITH FRIT PATTERN, COLOUR: TO MATCH BOLD BLUE WITH WHITE FRITTING BY SIGNAGE
- 11 MASONRY EXPANSION JOINT ROPED AND CALKED, TYPICAL COLOUR TO MATCH MASONRY MORTAR
- 12 INSULATED HOLLOW METAL DOOR, REFER TO SPECIFICATIONS & DOOR SCHEDULE. COLOUR TO MATCH ADJACENT EXTERIOR FINISH
- 12A HOLLOW METAL DOOR, REFER TO SPECIFICATIONS & DOOR SCHEDULE. COLOUR TO MATCH ADJACENT EXTERIOR FINISH
- 13 FULL VISION HIGH SPEED ROLL-UP OVERHEAD DOOR CW MOTOR, TRACK AND HARDWARE. SEE SPECIFICATIONS.
- 14 INSULATED HOLLOW METAL DOOR, REFER TO SPECIFICATIONS & DOOR SCHEDULE. COLOUR TO MATCH ADJACENT EXTERIOR FINISH ARCHITECTURAL MASONRY UNIT: ADAR LIMESTONE
- 14A INSULATED HOLLOW METAL DOOR, REFER TO SPECIFICATIONS & DOOR SCHEDULE. COLOUR TO MATCH ADJACENT EXTERIOR FINISH IMP PEWTER
- 15 INSULATED OVERHEAD DOOR COMPLETE WITH TRACK & HARDWARE REFER TO SPECIFICATIONS
- 16 CURTAIN WALL GLAZING IN THERMALLY BROKEN ANODIZED ALUMINUM STRONGFLEX FRAMING SYSTEM, FRAME COLOUR AND PROFILE TO BE: EXTERIOR: PEWTER, INTERIOR: CLEAR ANODIZED
- 17 SECURITY CAMERA SUPPLIED AND INSTALLED BY DYMON
- 18 INTERNALLY LIT SIGNAGE BY SIGN SUPPLIER, PROVIDE POWER SUPPLY AND 3/4" THICK EXTERIOR GRADE PLYWOOD FOR SIGNAGE MOUNTING, G.C. TO PROVIDE SHOP DRAWINGS, REFER TO DETAILS FOR SIGNAGE INSTALLATION, COLOUR: TBC
- 18A INTERNALLY LIT SIGNAGE BY SIGN SUPPLIER, PROVIDE POWER, G.C. TO PROVIDE SHOP DRAWINGS, REFER TO DETAILS FOR SIGNAGE INSTALLATION, TO BE CONFIRMED BY OWNER AND SIGNAGE SUPPLIER
- 19 PREFINISHED METAL CANOPY ALUMINUM COMPOSITE MATERIAL, ALUCOL LARSON FINISH: PEWTER, GAUGE TBC, REFER TO SECTION DETAILS 1 & 31 (DWG A-01, 13A007G-A-01) AND 14C DWG A-01B
- 20 ANODIZED ALUMINUM WINDOW SILL TO MATCH CURTAIN WALL BY WINDOW SUPPLIER
- 21 SPANDREL GLAZING CW INSULATED BACK PANEL, COLOUR TO MATCH IMP PEWTER
- 22 DOOR SEAL, SEE SPECIFICATIONS
- 23 PRE-FINISHED CONTINUOUS METAL SCUPPER, REFER TO PLANS AND DETAILS
- 23A PRE-FINISHED METAL SCUPPER THROUGH THE WALL, REFER TO PLANS AND DETAILS
- 24 CONTINUOUS BENT METAL CAP, 22 GA, PREFINISHED METAL CW HIDDEN FASTENERS, COLOUR: PEWTER, REFER TO SECTIONS AND DETAILS
- 25 PRE-FINISHED METAL FLASHING CW DRP EDGE PAINT COLOUR: PEWTER TO MATCH ADJACENT IMP, REFER TO DETAIL 3A/10
- 26 HOT DIPPED GALVANIZED BENT STEEL PLATE AROUND 3 SIDES OF OPENING CW PREFINISHED METAL FLASHING, COLOUR: PEWTER, REFER TO SECTIONS AND DETAILS
- 27 1" DIA. COMBUSTION AIR INTAKE CW VENT CAP (RADIANT HEATERS), COLOUR TO MATCH WALL FINISH, SEE MECHANICAL
- 28 6" DIAMETER CONCRETE FILLED STEEL PROTECTION BOLLARD, 54" HIGH ABOVE GRADE
- 29 FIRE DEPARTMENT CONNECTION REFER TO M&E: MAX 900mm, MIN 300mm ABOVE GRADE
- 30 HOT DIPPED GALVANIZED STEEL GUARDRAIL AT LOADING RAMP
- 31 HOT DIPPED GALVANIZED STEEL WALL PROTECTION, PAINTED YELLOW
- 32 MECHANICAL LOUVER, PREFINISHED METAL COLOUR TO MATCH WALL FINISH, REFER TO MECHANICAL
- 33 PREFINISHED METAL PARAPET CAP, 22GA, ALUMINUM COMPOSITE MATERIAL, ALUCOL LARSON FINISH: PEWTER, REFER TO ARCHITECT'S SECTION DETAILS
- 33A ALUMINUM COMPOSITE MATERIAL CW CONTINUOUS BENT METAL CAP, 22GA, PRE-FINISHED VERTICAL METAL SCOFFIT, ALUCOL LARSON FINISH: PEWTER
- 34 EXTERIOR WALL PAK LIGHT, CENTERED ON EXIT (IF APPLICABLE), REFER TO ELEC. DWGS
- 35 PREFINISHED METAL IMP STACK JOINT COVER TRIM, COLOUR TO MATCH IMP
- 36 PRE-FINISHED INSULATED METAL SYSTEM CW CONTINUOUS BENT METAL CAP, 22GA, PRE-FINISHED VERTICAL METAL SCOFFIT AT LOADING AREA AND EXIT STAR RECESSED DOOR, COLOUR TO MATCH ADJACENT IMP FINISH
- 37 TRAFFIC LIGHTS, REFER TO ELECTRICAL & SPECIFICATIONS
- 38 ALUMINUM COMPOSITE MATERIAL CW 4mm FIRE RESISTANT CORE, ALUCOL LARSON FINISH: LIGHT WENGE, INSTALLED ON PRE-MANUFACTURED INSULATED METAL PANEL 'KARRIER' SYSTEM, KARRIER PANEL COLOUR: WHITE
- 39 TYP: 1" VERTICAL REVEAL JOINT CW ACM FILLER PLATE, COLOUR: CHARCOAL, INSTALL REVEALS PER MANUF. RECOMMENDATIONS
- 40 TYP: 1 1/2" HORIZONTAL REVEAL JOINT CW ACM FILLER PLATE, COLOUR: CHARCOAL, INSTALL REVEALS PER MANUF. RECOMMENDATIONS, REFER TO DETAIL 1A-911
- 41 PROVIDE LIGHTING FIXTURES AND REQUIRED POWER CONNECTION INSIDE LANTERN AT ROOF DECK LEVEL, REFER TO ROOF PLAN AND ELECTRICAL
- 42 RADIANT HEATER VENT PIPING CW NON-COMBUSTIBLE SLEEVE, COLOUR TO MATCH ADJACENT WALL FINISH, SEE MECHANICAL
- VG CURTAIN WALL GLAZING: VISION GLASS
- VF CURTAIN WALL GLAZING: VISION GLASS - FRIT AS PER CITY REQUIREMENTS

**GENERAL NOTES**

- DO NOT SCALE DRAWINGS; ONLY FIGURED DIMENSIONS ARE TO BE USED, WHERE DOUBT EXISTS: FILE REQUEST FOR INTERPRETATION AND REQUEST CLARITY.
- IT IS THE RESPONSIBILITY OF THE GENERAL CONTRACTOR TO VERIFY DIMENSIONS ON SITE; REPORT DISCREPANCIES TO THE ARCHITECT PROMPTLY.
- GENERAL CONTRACTOR TO TAKE INTO ACCOUNT CONSTRUCTION TOLERANCE; GENERAL CONTRACTOR TO COORDINATE THE WORK OF DIFFERENT TRADES TO COMPLY WITH DESIGN INTENT.
- ALL WORK DESCRIBED IN THESE DRAWINGS AND SPECIFICATIONS ARE TO COMPLY WITH THE CURRENT EDITION OF THE ONTARIO BUILDING CODE (2010) INCLUDING MOST RECENT AMENDMENTS.
- DRAWINGS AND SPECIFICATIONS ARE COMPLEMENTARY AND ARE TO BE READ TOGETHER.

**COPYRIGHT**

THIS DRAWING IS AN INSTRUMENT OF SERVICE AND IS PROTECTED BY COPYRIGHT AND IS THE SOLE PROPERTY OF DREESSEN CARDINAL ARCHITECTS INC. COPIES, INCLUDING ELECTRONIC COPIES, MAY ONLY BE USED FOR THE PURPOSE INTENDED, FOR THE SINGLE PROJECT FOR WHICH THEY ARE ISSUED AND MAY NOT BE OFFERED FOR SALE OR TRANSFER WITHOUT THE EXPRESS WRITTEN PERMISSION OF THE ARCHITECT.

**ISSUE RECORD**

NO.	DESCRIPTION	DATE
1	ISSUE FOR REVIEW	2022-05-19
2	ISSUE FOR REVIEW	2022-12-22
3	ISSUE FOR SPA	2023-02-06

**CLIENT**

**DYMON SELF-STORAGE**  
2-1830 WALKLEY ROAD, OTTAWA, ON  
(T) 613-247-0888

**CONSULTANTS**

**FOTENN PLANNING + DESIGN**  
396 COOPER STREET, SUITE 300, OTTAWA ON  
PLANNING & URBAN DESIGN  
(T) 613-730-5709

**D B GRAY ENGINEERING INC.**  
700 LONG POINT CIR, GLOUCESTER, ON,  
CIVIL ENGINEER  
(T) 613-425-8044

**TACT ARCHITECTURE INC.**  
660R COLLEGE STREET (REAR LANE) TORONTO ON,  
DESIGN ARCHITECT  
(T) 416-516-1949

**BRUMER ENGINEERING SERVICES LTD**  
25-120 WEST BEAVER CREEK ROAD, RICHMOND HILL ON,  
MECHANICAL CONSULTANTS  
(T) 905-771-7798

**HUDSON ENGINEERING**  
2901 STEELES AVE W UNIT 26, TORONTO, ON  
ELECTRICAL CONSULTANTS  
(T) 416-663-5470

**D+M STRUCTURAL LTD.**  
110-333 PRESTON ST, OTTAWA, ON  
STRUCTURAL CONSULTANTS  
(T) 613 651-9490

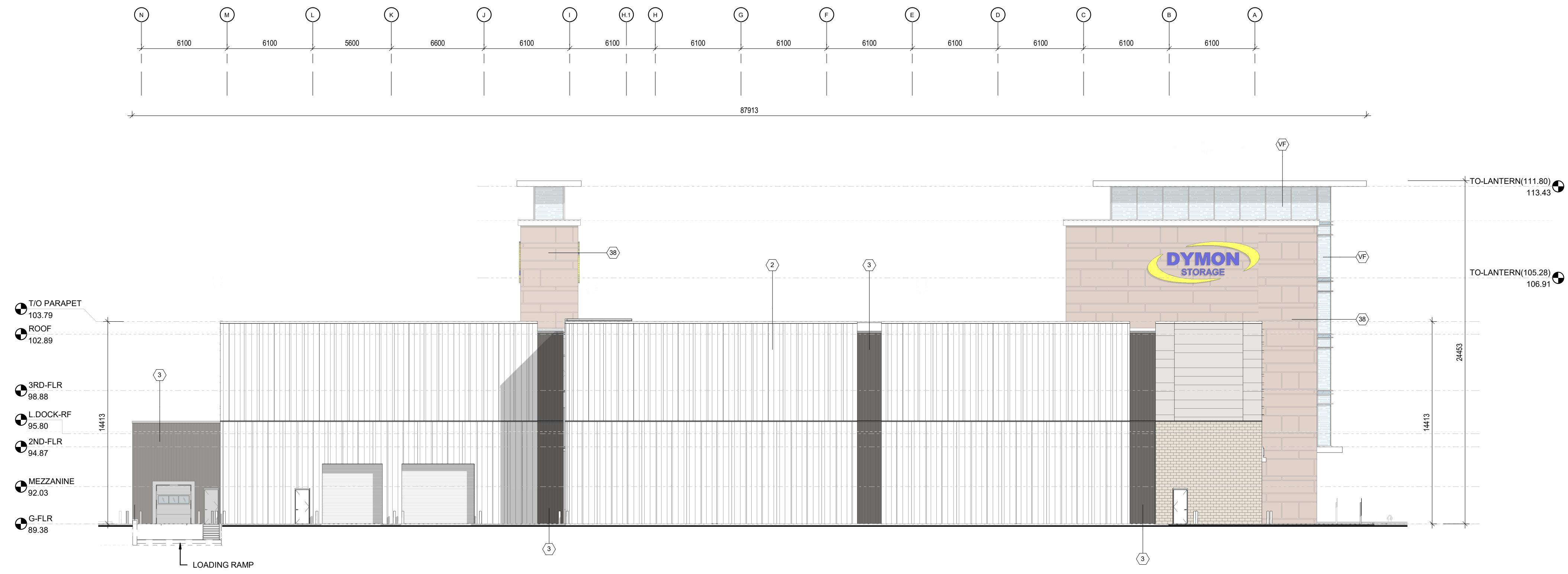
A GROUP OF ARCHITECTS  
201-1339 WELLINGTON ST. W. OTTAWA ON K1Y 3B8  
WWW.ARCHITECTSDCA.COM 613.725.2294

**PROJECT TITLE**  
DYMON 5210 INNES ROAD

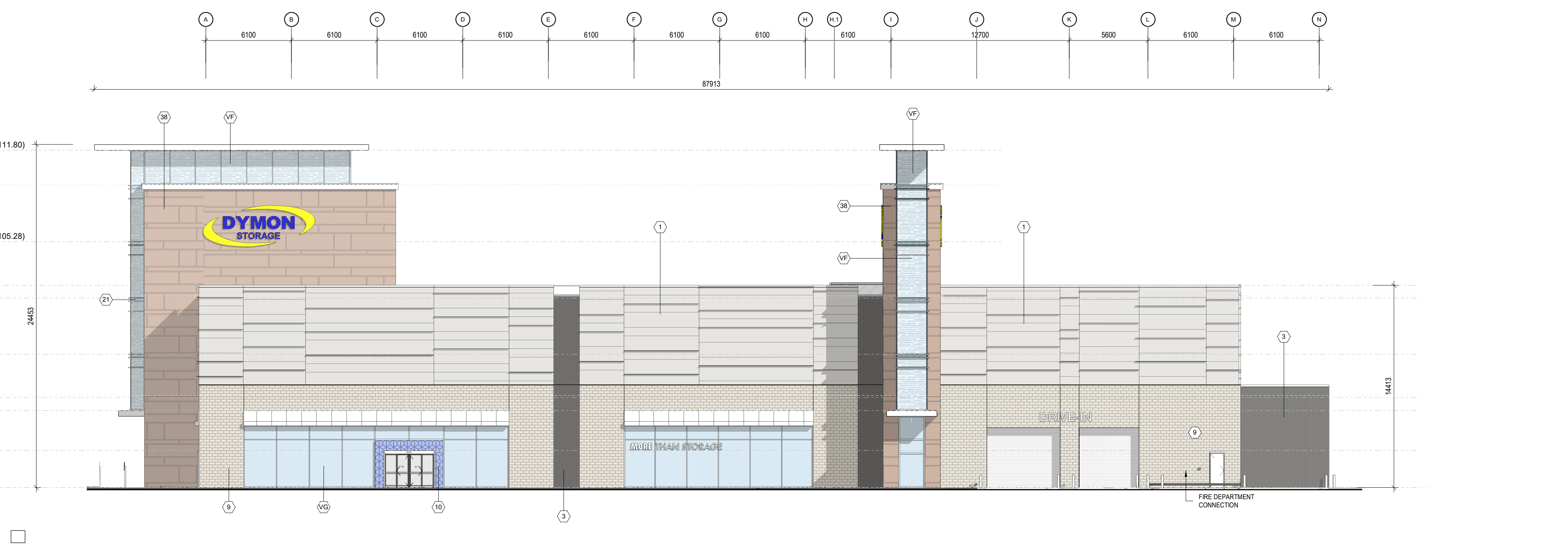
**DRAWING TITLE**  
ELEVATIONS

DATE APRIL 2022	DRAWN SD	JOB NO. 3465	DRAWING NO. A400
SCALE As indicated	REVIEWED TD		

ARCHITECTURAL



**1 EAST ELEVATION**  
SCALE: 1 : 200



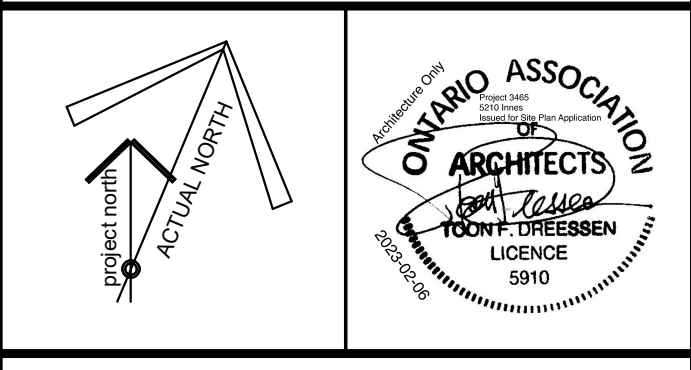
**2 WEST ELEVATION**  
SCALE: 1 : 200

- 1 PRE-MANUFACTURED INSULATED METAL PANEL SYSTEM, HORIZONTAL ORIENTATION, KINGSFAN MINI MICRO-RIB PROFILE, COLOUR: PEWTER
- 1A PRE-MANUFACTURED INSULATED METAL PANEL SYSTEM, HORIZONTAL ORIENTATION, KINGSFAN MINERAL FIBRE MINI MICRO-RIB PROFILE, COLOUR: PEWTER
- 2 PRE-MANUFACTURED INSULATED METAL PANEL SYSTEM, VERTICAL ORIENTATION, KINGSFAN EMBOSSED SHADOWLINE PROFILE, COLOUR: PEWTER
- 3 PRE-MANUFACTURED INSULATED METAL PANEL SYSTEM, VERTICAL ORIENTATION, KINGSFAN EMBOSSED SHADOWLINE PROFILE, COLOUR: DARK BRONZE
- 3A PRE-MANUFACTURED INSULATED METAL PANEL SYSTEM, VERTICAL ORIENTATION, KINGSFAN MINERAL FIBRE SHADOWLINE PROFILE, COLOUR: DARK BRONZE
- 4 KINGSFAN ACCENT FIN SHAPE 'BLADE' EXTRUSION (F) COLOUR: PEWTER
- 5 PRE-FINISHED METAL FLASHING JOINT
- 6 TYPICAL IMP JOINT, REVEALS AS PER MANUFACTURER'S RECOMMENDATIONS
- 7 12" VERTICAL REVEAL JOINT FACTORY FOLDED (CW TRIMLESS ENDS AND RECESSED RUBBER GASKET) IN IMP SYSTEM. INSTALL REVEALS AS PER MANUFACTURER'S RECOMMENDATIONS. REFER TO DETAIL 8 / AS1
- 8 POURED CONCRETE
- 9 (11-08TH) / (02-08TH) / (03-08TH) ARRISCRAPT ADAR Limestone ARCHITECTURAL MASONRY UNIT, PATTER: SUPA GENES, FINISH: FINE DRESSED RUNNING BOND (REFER TO SPECIFICATIONS)
- 10 BACKLIT GLASS WITH FRIT PATTERN, COLOUR: TO MATCH BOLD BLUE WITH WHITE FRITTING BY SIGNAGE
- 11 MASONRY EXPANSION JOINT ROPED AND CALKED, TYPICAL COLOUR TO MATCH MASONRY MORTAR.
- 12 INSULATED HOLLOW METAL DOOR, REFER TO SPECIFICATIONS & DOOR SCHEDULE. COLOUR TO MATCH ADJACENT EXTERIOR FINISH
- 12A HOLLOW METAL DOOR, REFER TO SPECIFICATIONS & DOOR SCHEDULE. COLOUR TO MATCH ADJACENT EXTERIOR FINISH
- 13 FULL VISION HIGH SPEED ROLL-UP OVERHEAD DOOR CW MOTOR, TRACK AND HARDWARE. SEE SPECIFICATIONS.
- 14 INSULATED HOLLOW METAL DOOR, REFER TO SPECIFICATIONS & DOOR SCHEDULE. COLOUR TO MATCH ADJACENT EXTERIOR FINISH ARCHITECTURAL MASONRY UNIT ADAR Limestone
- 14A INSULATED HOLLOW METAL DOOR, REFER TO SPECIFICATIONS & DOOR SCHEDULE. COLOUR TO MATCH ADJACENT EXTERIOR FINISH IMP PEWTER
- 15 INSULATED OVERHEAD DOOR COMPLETE WITH TRACK & HARDWARE REFER TO SPECIFICATIONS  
COLOUR: PEWTER
- 16 CURTAIN WALL GLAZING IN THERMALLY BROKEN ANODIZED ALUMINUM STIFFFRONT FRAMING SYSTEM, FRAME COLOUR AND PROFILE TO BE: EXTERIOR: PEWTER, INTERIOR: CLEAR ANODIZED
- 17 SECURITY CAMERA SUPPLIED AND INSTALLED BY DYMON.
- 18 INTERNALLY LIT SIGNAGE BY SIGN SUPPLIER, PROVIDE POWER SUPPLY AND 1/2" THICK EXTERIOR GRADE PLYWOOD FOR SIGNAGE MOUNTING, G.C. TO PROVIDE SHOP DRAWINGS. REFER TO DETAILS FOR SIGNAGE INSTALLATION, COLOUR: TBC.
- 18A INTERNALLY LIT SIGNAGE BY SIGN SUPPLIER, PROVIDE POWER, G.C. TO PROVIDE SHOP DRAWINGS. REFER TO DETAILS FOR SIGNAGE INSTALLATION TO BE CONFIRMED BY OWNER AND SIGNAGE SUPPLIER.
- 19 PREFINISHED METAL CANOPY ALUMINUM COMPOSITE MATERIAL - ALUCCO LARSON FINISH: PEWTER, GAUGE TBC. REFER TO SECTION DETAILS 1 & 31 (DWG A-01, 1384DWG-A-01 AND 143 DWG A-01).
- 20 ANODIZED ALUMINUM WINDOW SILL TO MATCH CURTAIN WALL BY WINDOW SUPPLIER
- 21 SPANDREL GLAZING CW INSULATED BACK PANEL, COLOUR TO MATCH IMP PEWTER.
- 22 DOOR SEAL, SEE SPECIFICATIONS.
- 23 PRE-FINISHED CONTINUOUS METAL SCUPPER, REFER TO PLANS AND DETAILS.
- 23A PRE-FINISHED METAL SCUPPER THROUGH THE WALL, REFER TO PLANS AND DETAILS.
- 24 CONTINUOUS BENT METAL CAP, 22 GA. PREFINISHED METAL CW HIDDEN FASTENERS, COLOUR: PEWTER, REFER TO SECTIONS AND DETAILS.
- 25 PRE-FINISHED METAL FLASHING CW DRP EDGE, PAINT COLOUR: PEWTER. TO MATCH ADJACENT IMP. REFER TO DETAIL 3A/10
- 26 HOT DIPPED GALVANIZED BENT STEEL PLATE AROUND 3 SIDES OF OPENING CW PREFINISHED METAL FLASHING, COLOUR: PEWTER. REFER TO SECTIONS AND DETAILS.
- 27 1" DIAM. COMBUSTION AIR INTAKE CW VENT CAP (RADIANT HEATERS), COLOUR TO MATCH WALL FINISH. SEE MECHANICAL.
- 28 8" DIAMETER CONCRETE FILLED STEEL PROTECTION BOLLARD, 54" HIGH ABOVE GRADE.
- 29 FIRE DEPARTMENT CONNECTION REFER TO MAE, MAX 900mm, MIN 300mm ABOVE GRADE.
- 30 HOT DIPPED GALVANIZED STEEL GUARDRAIL AT LOADING RAMP.
- 31 HOT DIPPED GALVANIZED STEEL WALL PROTECTION, PAINTED YELLOW.
- 32 MECHANICAL LOUVER, PRE-FINISHED METAL COLOUR TO MATCH WALL FINISH. REFER TO MECHANICAL.
- 33 PREFINISHED METAL PARAPET CAP, 22GA. ALUMINUM COMPOSITE MATERIAL - ALUCCO LARSON FINISH: PEWTER, REFER TO MARCH/EE SECTION DETAILS.
- 33A ALUMINUM COMPOSITE MATERIAL CW CONTINUOUS BENT METAL CAP, 22GA. PRE-FINISHED VENTED METAL SCOFFIT - ALUCCO LARSON FINISH: PEWTER
- 34 EXTERIOR WALL PAK LIGHT, CENTERED ON EXIT (IF APPLICABLE), REFER TO ELEC. DWGS
- 35 PREFINISHED METAL IMP STACK JOINT COVER TRIM, COLOUR TO MATCH IMP
- 36 PRE-FINISHED INSULATED METAL SYSTEM CW CONTINUOUS BENT METAL CAP, 22GA. PRE-FINISHED VENTED METAL SCOFFIT AT LOADING AREA AND EXIT STAR RECESSED DOOR, COLOUR TO MATCH ADJACENT IMP FINISH.
- 37 TRAFFIC LIGHTS, REFER TO ELECTRICAL & SPECIFICATIONS
- 38 ALUMINUM COMPOSITE MATERIAL CW 4mm FIRE RESISTANT CORE, ALUCCO LARSON FINISH: LIGHT WENGE, INSTALLED ONE PRE-MANUFACTURED INSULATED METAL PANEL 'KARRIER' SYSTEM, KARRIER PANEL COLOUR: WHITE.
- 39 TYP: 1" VERTICAL REVEAL JOINT CW ACM FILLER PLATE, COLOUR: CHARCOAL, INSTALL REVEALS PER MANUF. RECOMMENDATIONS.
- 40 TYP: 1-1/2" HORIZONTAL REVEAL JOINT CW ACM FILLER PLATE, COLOUR: CHARCOAL, INSTALL REVEALS PER MANUF. RECOMMENDATIONS. REFER TO DETAIL 1A-01.
- 41 PROVIDE LIGHTING FIXTURES AND REQUIRED POWER CONNECTION INSIDE LANTERN AT ROOF DECK LEVEL, REFER TO ROOF PLAN AND ELECTRICAL.
- 42 RADIANT HEATER VENT PIPING CW NON-COMBUSTIBLE SLEEVE, COLOUR TO MATCH ADJACENT WALL FINISH. SEE MECHANICAL.
- VG CURTAIN WALL GLAZING: VISION GLASS
- VF CURTAIN WALL GLAZING: VISION GLASS - FRIT AS PER CITY REQUIREMENTS

**GENERAL NOTES**

- DO NOT SCALE DRAWINGS; ONLY FIGURED DIMENSIONS ARE TO BE USED, WHERE DOUBT EXISTS; FILE REQUEST FOR INTERPRETATION AND REQUEST CLARITY.
- IT IS THE RESPONSIBILITY OF THE GENERAL CONTRACTOR TO VERIFY DIMENSIONS ON SITE; REPORT DISCREPANCIES TO THE ARCHITECT PROMPTLY.
- GENERAL CONTRACTOR TO TAKE INTO ACCOUNT CONSTRUCTION TOLERANCE; GENERAL CONTRACTOR TO COORDINATE THE WORK OF DIFFERENT TRADES TO COMPLY WITH DESIGN INTENT.
- ALL WORK DESCRIBED IN THESE DRAWINGS AND SPECIFICATIONS ARE TO COMPLY WITH THE CURRENT EDITION OF THE ONTARIO BUILDING CODE (2010) INCLUDING MOST RECENT AMENDMENTS.
- DRAWINGS AND SPECIFICATIONS ARE COMPLEMENTARY AND ARE TO BE READ TOGETHER.

**COPYRIGHT**  
THIS DRAWING IS AN INSTRUMENT OF SERVICE AND IS PROTECTED BY COPYRIGHT AND IS THE SOLE PROPERTY OF DREESSEN CARDINAL ARCHITECTS INC. COPIES, INCLUDING ELECTRONIC COPIES, MAY ONLY BE USED FOR THE PURPOSE INTENDED, FOR THE SINGLE PROJECT FOR WHICH THEY ARE ISSUED AND MAY NOT BE OFFERED FOR SALE OR TRANSFER WITHOUT THE EXPRESS WRITTEN PERMISSION OF THE ARCHITECT.



ISSUE RECORD		
NO.	DESCRIPTION	DATE
1	ISSUE FOR REVIEW	2022-05-19
2	ISSUE FOR REVIEW	2022-12-22
3	ISSUE FOR SPA	2023-02-06

**CLIENT**  
**DYMON SELF-STORAGE**  
2-1830 WALKLEY ROAD, OTTAWA, ON  
(T) 613-247-0888

**CONSULTANTS**  
**FOTENN PLANNING + DESIGN**  
396 COOPER STREET, SUITE 300, OTTAWA ON  
PLANNING & URBAN DESIGN  
(T) 613-730-5709

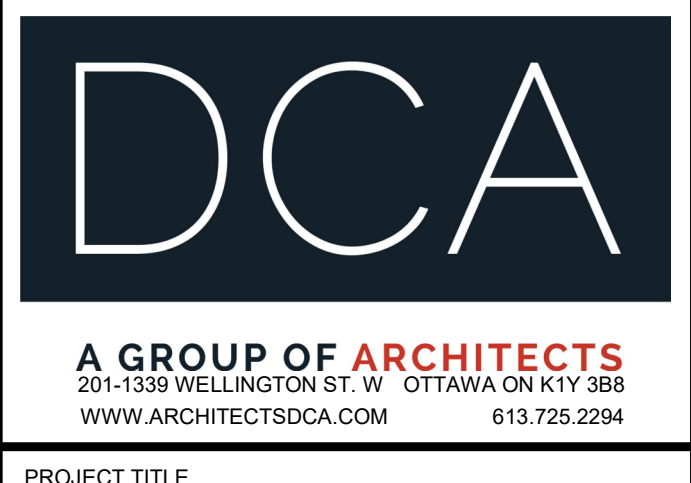
**D B GRAY ENGINEERING INC.**  
700 LONG POINT CIR, GLOUCESTER, ON.  
CIVIL ENGINEER  
(T) 613-425-8044

**TACT ARCHITECTURE INC.**  
660R COLLEGE STREET (REAR LANE) TORONTO ON.  
DESIGN ARCHITECT  
(T) 416-516-1949

**BRUMER ENGINEERING SERVICES LTD**  
25-120 WEST BEAVER CREEK ROAD, RICHMOND HILL ON  
MECHANICAL CONSULTANTS  
(T) 905-771-7798

**HUDSON ENGINEERING**  
2901 STEELES AVE W UNIT 26, TORONTO, ON  
ELECTRICAL CONSULTANTS  
(T) 416-663-5470

**D+M STRUCTURAL LTD.**  
110-333 PRESTON ST. OTTAWA, ON  
STRUCTURAL CONSULTANTS  
(T) 613 651-9490



**PROJECT TITLE**  
**DYMON 5210 INNES ROAD**

**DRAWING TITLE**  
**ELEVATIONS**

DATE	DRAWN	JOB NO.	DRAWING NO.
APRIL 2022	SD	3465	A401
SCALE	REVIEWED		
As indicated	TD		

**ARCHITECTURAL**