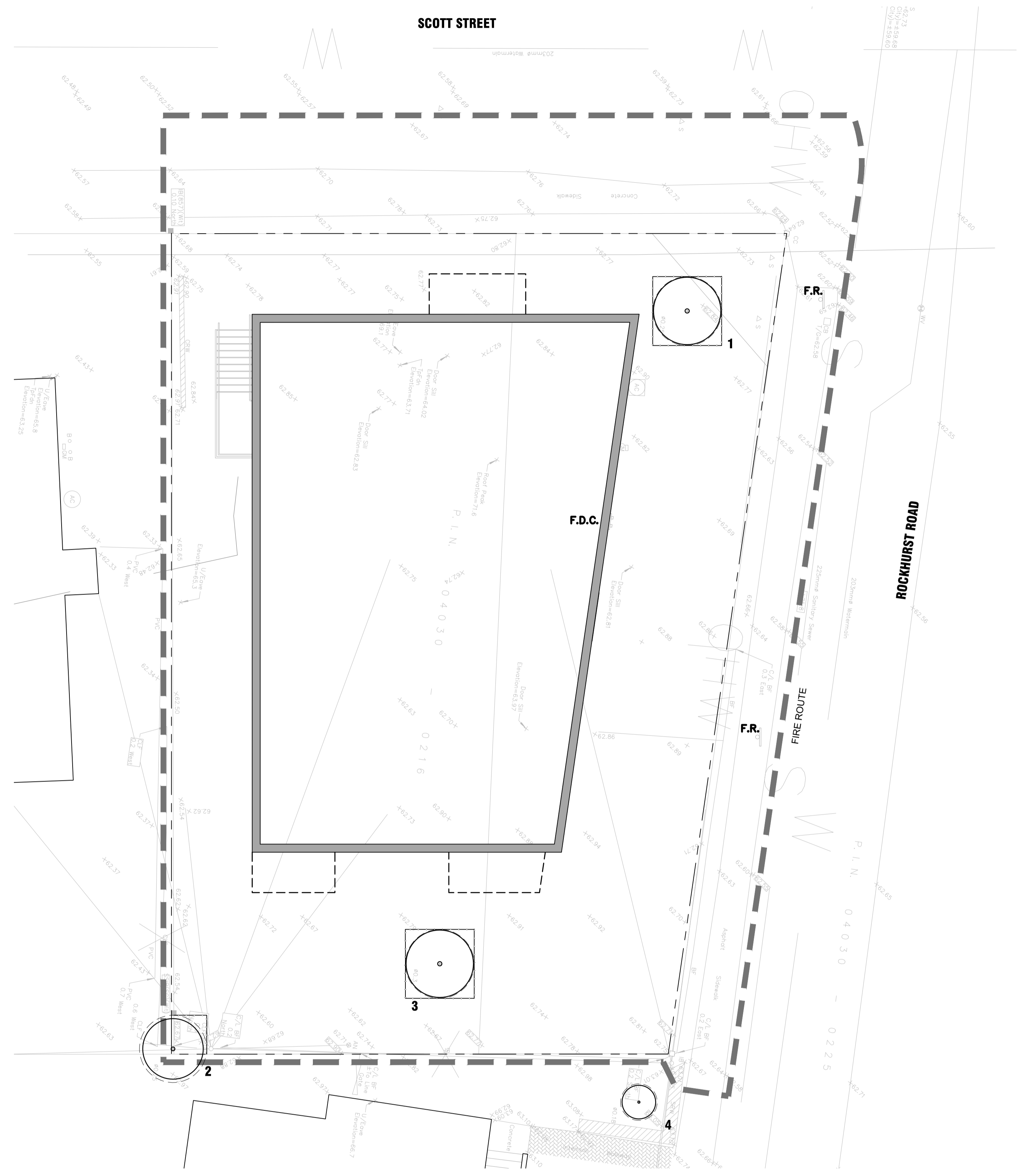


PLOT INFORMATION: DWG NAME: P:\PROJECTS\Jenny_Coast\1806_Scott\1806_Scott_Site\LANDSCAPE_ARCHITECTURE\DEVELOPMENT\PLANS\DWG\T1.dwg PLOT DATE: 2023-01-20 14:42:37 PM SHEET DATE: 2023-01-20 14:42:37 PM SHEET DSC: 1806_Scott.dwg PLOT DATE: 2023-01-20 14:42:37 PM SHEET DSC: 1806_Scott.dwg LAST SAVED BY: emoliana

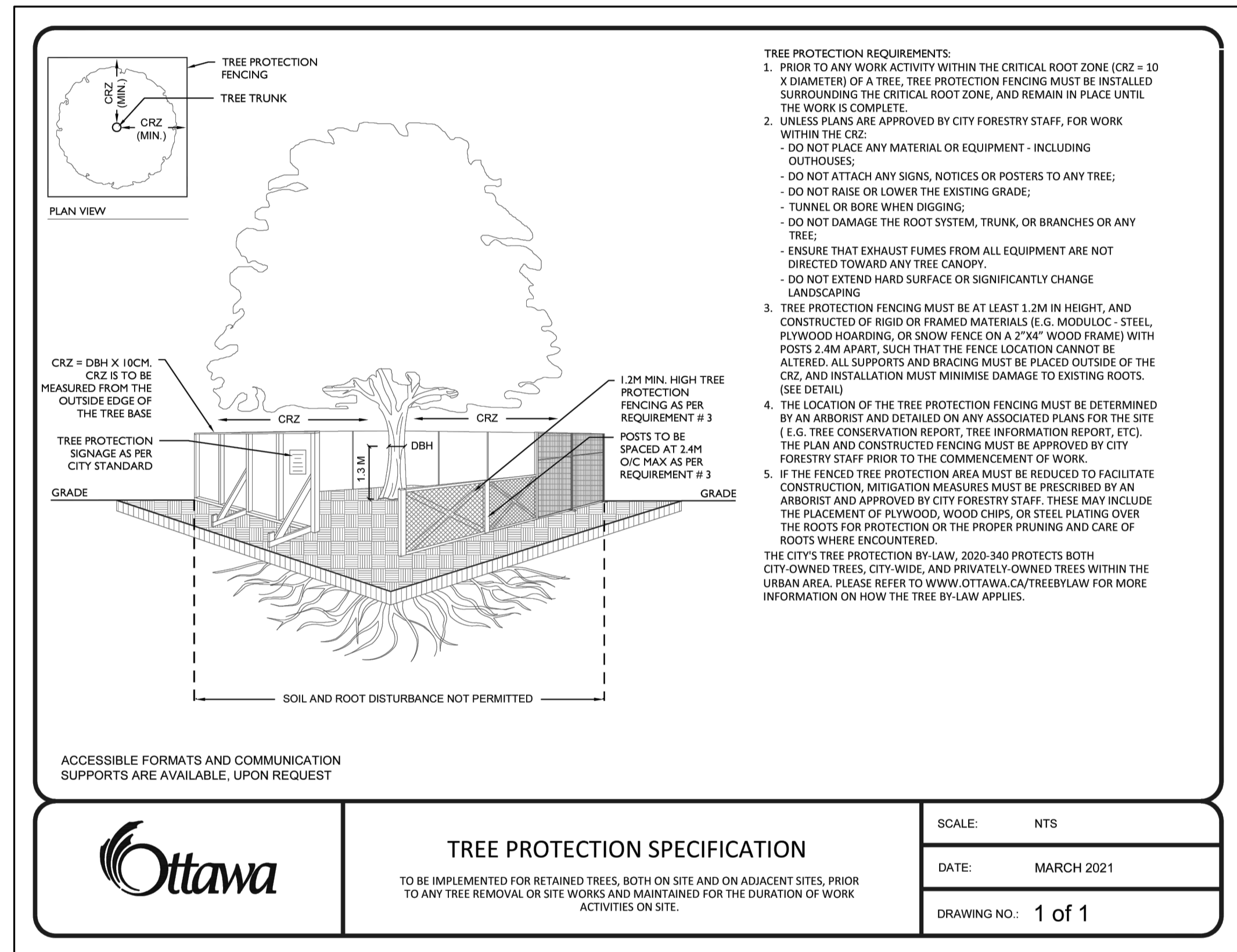


1 TREE CONSERVATION PLAN
1:100

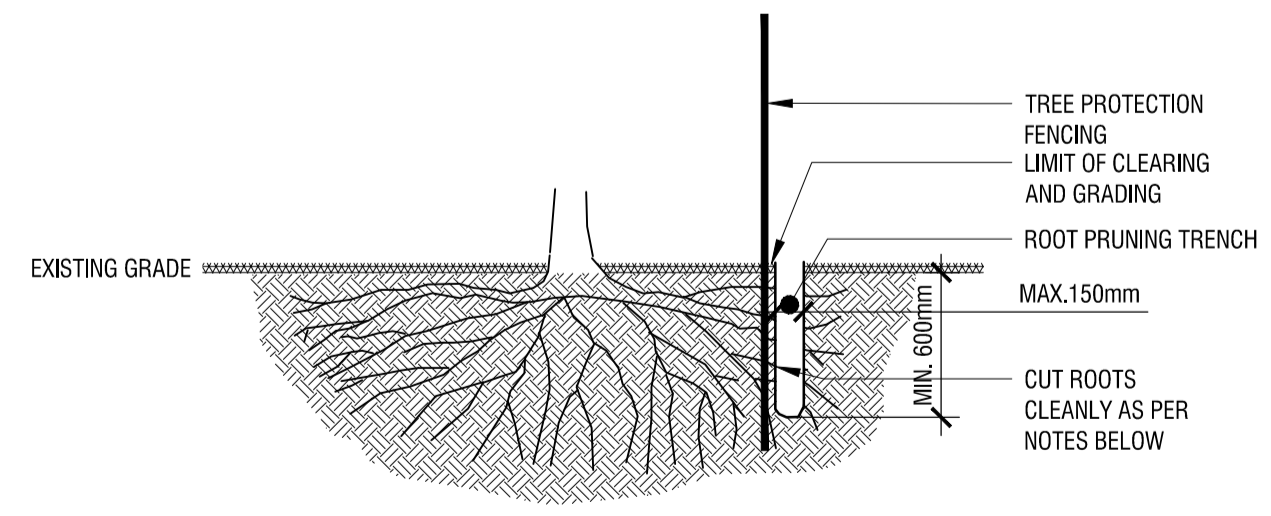
PRELIMINARY
NOT FOR CONSTRUCTION

NO.	SPECIES	D.B.H. ¹ (cm)	TREE CONDITION	STATUS ²	CRZ ³ (m)
1	Honey-Locust (Gleditsia triacanthos)	25	Good; mature; co-dominant stems at 1.5m from grade; moderate dieback due to drought/ <i>Nectria</i> infection; restricted rooting zone; good root collar; broad, dense crown; introduced to Eastern Ontario; to be preserved and protected.	To be retained	2.5
2	Common Buckthorn (Rhamnus cathartica)	<10	Good; mature; multi-stemmed from grade; introduced, highly invasive species; to be preserved and protected. (Note: Shared ownership)	To be retained	2.5
3	Schubert chokecherry (Prunus virginiana 'Shubert')	25.6	Good; mature; purple-leaved; single main stem with suppressed and competing laterals starting at 2m; broad, dense crown; surrounding root sprouts are green-leaved with heavy black knot infections (<i>Apiosporina morbosae</i>); cultivar; to be preserved and protected.	To be retained	2.6
4	Crab apple (Malus spp.)	12 avg.	Good; mature; tri-stemmed at 0.5m from grade; stem divergent and crown asymmetric towards east; dense crown; cultivar; to be preserved and protected. (Note: Neighbour ownership)	To be retained	1.2

¹ D.B.H.: INDICATES DIAMETER (cm) MEASUREMENT AT BREAST HEIGHT (1.3m ABOVE GRADE);
² TO BE RETAINED OR REMOVED.
³ CRZ: INDICATES RADIUS OF CRITICAL ROOTING ZONE AND IS ESTABLISHED AS BEING 10 CENTIMETERS FROM THE TRUNK OF A TREE FOR EVERY 1 CENTIMETER OF TRUNK DIAMETER AT BREAST HEIGHT (DBH). THE CRZ IS CALCULATED AS DBH x 10cm
 REFER TO RECOMMENDATIONS IN REPORT PREPARED BY IFS ASSOCIATES FOR TECHNIQUES TO PRESERVE TREES.



2 TREE PROTECTION FENCING
n.t.s.



- NOTES:
- PROPER ROOT PRUNING TECHNIQUE REQUIRED WHEN TREE ROOTS ENCOUNTERED DURING EXCAVATION.
 - EXCAVATIONS WITHIN DRIP LINE SHOULD BE BY DIRECTIONAL MICRO-TUNNELLING AND BORING. OUTSIDE THE DRIP LINE, ROOTS SHOULD BE CUT CLEANLY (AS PER ABOVE DRAWING) WITH PRUNING SHEARS OR A SAW WIPED WITH ALCOHOL BEFORE EACH CUT.
 - AFTER ROOTS ARE CLEANLY CUT, THE AREA SHOULD BE BACKFILLED WITH SUITABLE MATERIAL (TO BE APPROVED BY LANDSCAPE ARCHITECT) TO PREVENT DESICCATION.
 - WHERE APPROPRIATE, THE TREES SHALL UNDERGO AN OVERALL PRUNING TO RESTORE TREE APPEARANCE AND / OR RESTORE THE BALANCE BETWEEN TOP GROWTH AND ROOTS. DO NOT PRUNE LEADERS.

3 ROOT PRUNING DETAIL
n.t.s.

Copyright Reserved
 The Copyrights to all designs and drawings are the property of Fofem Consultants Inc. Unauthorized reproduction or use is forbidden. DO NOT SCALE DRAWING
 Copyright réservés
 Les droits d'auteur à tous les modèles et dessins sont la propriété de Fofem Consultants Inc. Reproduction ou utilisation non autorisée est interdite. NE PAS L'ÉCHELLE DE DESSIN

Client / Client
2851944 Ontario Inc.
14 Breadner Blvd.

key plan / plan repère

legend / légende

- EXISTING TREE-LINE AS SURVEYED
- INDIVIDUAL TREE/STAND OF TREES TO BE PRESERVED AND KEY No. - REFER TO TABLE # & REPORT FOR PRESERVATION TECHNIQUES DURING CONSTRUCTION
- CRITICAL ROOTING ZONE (CRZ) IDENTIFIED - REFER TO TABLE # FOR RADIUS OF CRZ
- TREE PROTECTION FENCING
- AREA OF STUDY
- INDIVIDUAL TREES TO BE REMOVED AND KEY No. - REFER TO TABLE # & REPORT

rev'n	description / la description	yyyy/mm/dd
00	Issue for ZBLA and SPC	2022/12/06

north / le nord

stamp / le cachet

project / projet
4 STOREY APARTMENT
1806 Scott Street

drawing / dessin

TREE CONSERVATION PLAN

designed / conçu	drawn / dessiné	reviewed / examiné
BM	BM / EM	SM / DF
date	project number / No. du projet	

June 2022
 drawing number / No. du dessin

T1 of 1

2851944 Ontario Inc.
14 Breadner Blvd.

key plan / plan repère

legend / légende

- SCOPE OF APPLICATION
- - - PROPERTY LINE
- - - BALCONY EXTENTS
- EXISTING TREES TO REMAIN
- CRITICAL ROOT ZONE
- SMALL DECIDUOUS TREE (REFER TO PLANTING SCHEDULE FOR SPECIES AND QUANTITIES)
- LARGE DECIDUOUS TREE (REFER TO PLANTING SCHEDULE FOR SPECIES AND QUANTITIES)
- PERENNIAL PLANTING
- LAWN (150mm DEPTH TOPSOIL AND SOD)

00	Issue for ZBLA and SPC	2022/12/14
rev'n	description / la description	yyyy/mm/dd

FOTENN Planning + Design
396 Cooper Street, Suite 300
Ottawa, ON, CANADA K2P 2H7
613.730.5709
fotenn.com

project / projet

stamp / le cachet

4 STOREY APARTMENT
1806 Scott Street

drawing / dessin

PLANTING PLAN

designed / conçu	drawn / dessiné	reviewed / examiné
BM	BM	SM / DF

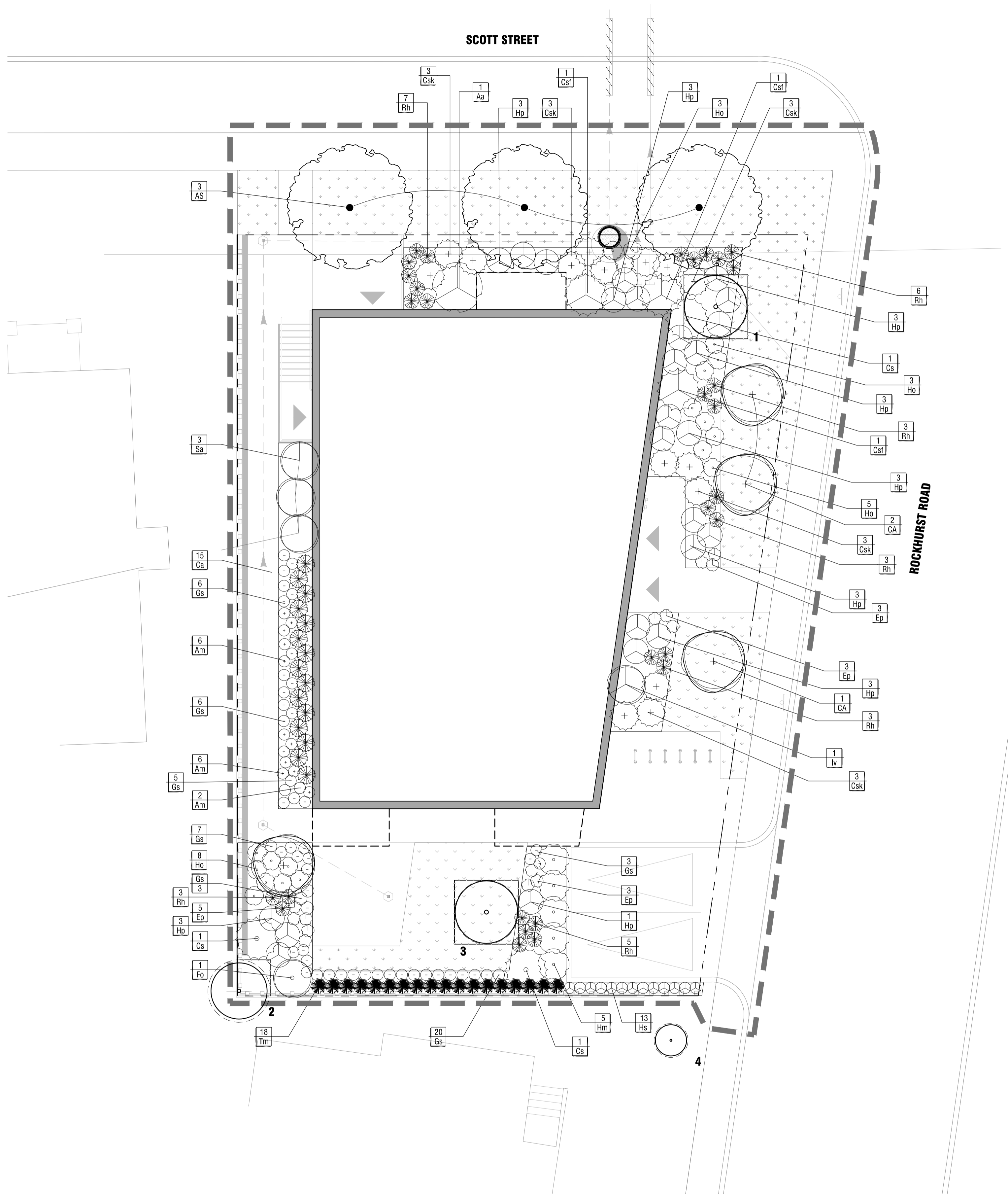
date
June 2022

project number / No. du projet

drawing number / No. du dessin

L2 of 3

PLANTING SCHEDULE				
KEY	QTY.	BOTANICAL NAME	COMMON NAME	SIZE / CONDITION / SPACING
DECIDUOUS TREES				
AS	3	Acer saccharum	Sugar Maple	70mm cal. / W.B.
CA	4	Cornus alternifolia	Pagoda Dogwood	50mm cal. / W.B.
DECIDUOUS SHRUBS				
Aa	1	Amelanchier alnifolia	Saskatoon Berry	60cm ht. / 1.5m spacing
Cs	3	Cornus sericea	Red Osier Dogwood	100cm ht. / specimen quality / 1.75m sp.
Csf	3	Cornus sericea 'Flaviramea'	Yellow Twig Dogwood	100cm ht. / specimen quality / 1.75m sp.
Csk	15	Cornus sericea 'Kelsey'	Kelsey Dwarf Dogwood	30cm ht. / 45cm o.c.
Fo	2	Forsythia ovata 'Northern Gold'	Northern Gold Forsythia	60cm ht. / 1.5m sp.
Hm	5	Hydrangea macrophylla 'Endless Summer Twist & Shout' (PIIHM-I)	Twist & Shout Hydrangea	60cm ht. / 1.5m sp.
Hp	25	Hydrangea paniculata 'Pinky Winky'	Pinky Winky Hydrangea	#3 Pot / 1m o.c.
Iv	1	Ilex verticillata 'Winter Red'	Winterberry	100cm ht. / specimen quality / 1.5m spacing
Sa	3	Symphoricarpos Albus	Snowberry	60cm ht. / 1.5m sp.
BROADLEAF EVERGREEN SHRUBS				
Tm	18	Taxus x media	Yew Hedge	
PERENNIALS & GRASSES				
Am	14	Alchemilla mollis	Lady's Mantle	#1 Pot / 45cm o.c.
Ca	15	Calamagrostis acutiflora 'Karl Foerster'	Feather Reed Grass	#2 Pot / 50cm o.c.
Ep	14	Echinacea purpurea	Purple Coneflower	#1 Pot / 45cm o.c.
Gs	50	Geranium sanguineum	Bloody Cranesbill	#1 Pot / 45cm o.c.
Hs	13	Hemerocallis 'Stella D'Oro'	Daylily	#1 Pot / 45cm o.c.
Ho	19	Hosta	Plantain Lily	#1 Pot / 45cm o.c.
Rh	30	Rudbeckia hirta	Black Eyed Susan	#1 Pot / 45cm o.c.



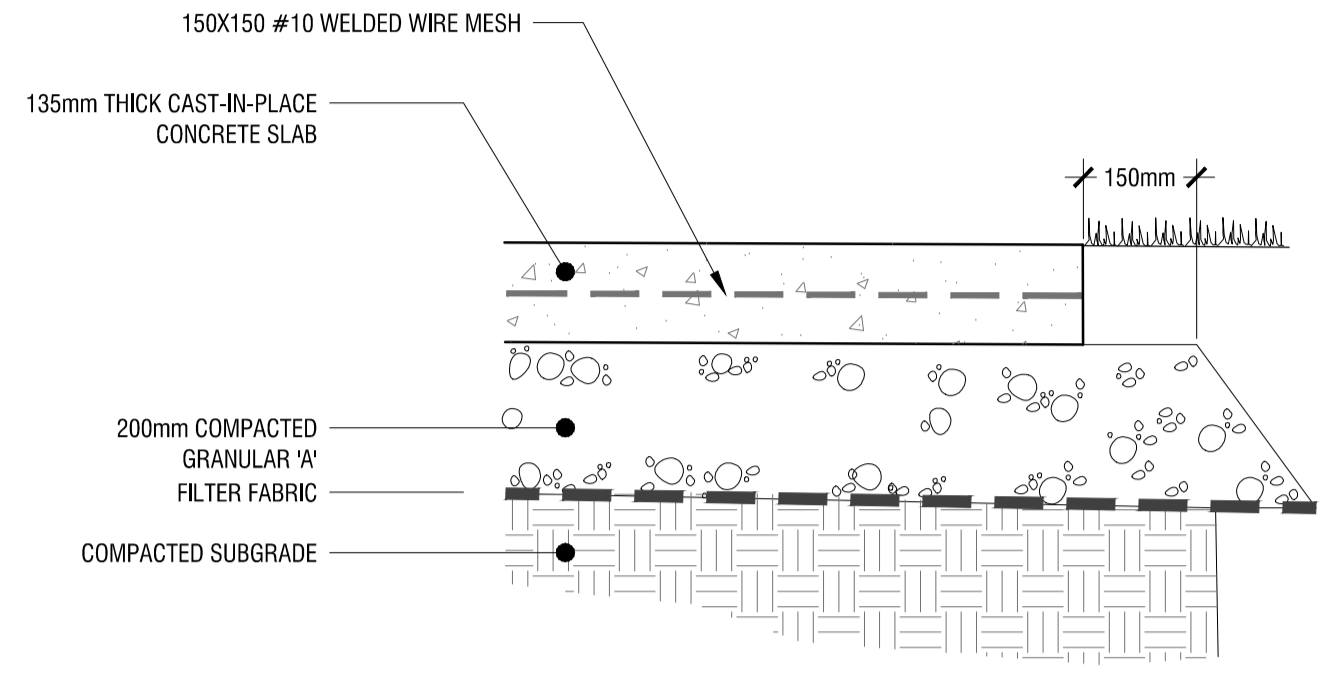
1 LANDSCAPE PLAN
L1 1:100

PRELIMINARY
NOT FOR CONSTRUCTION

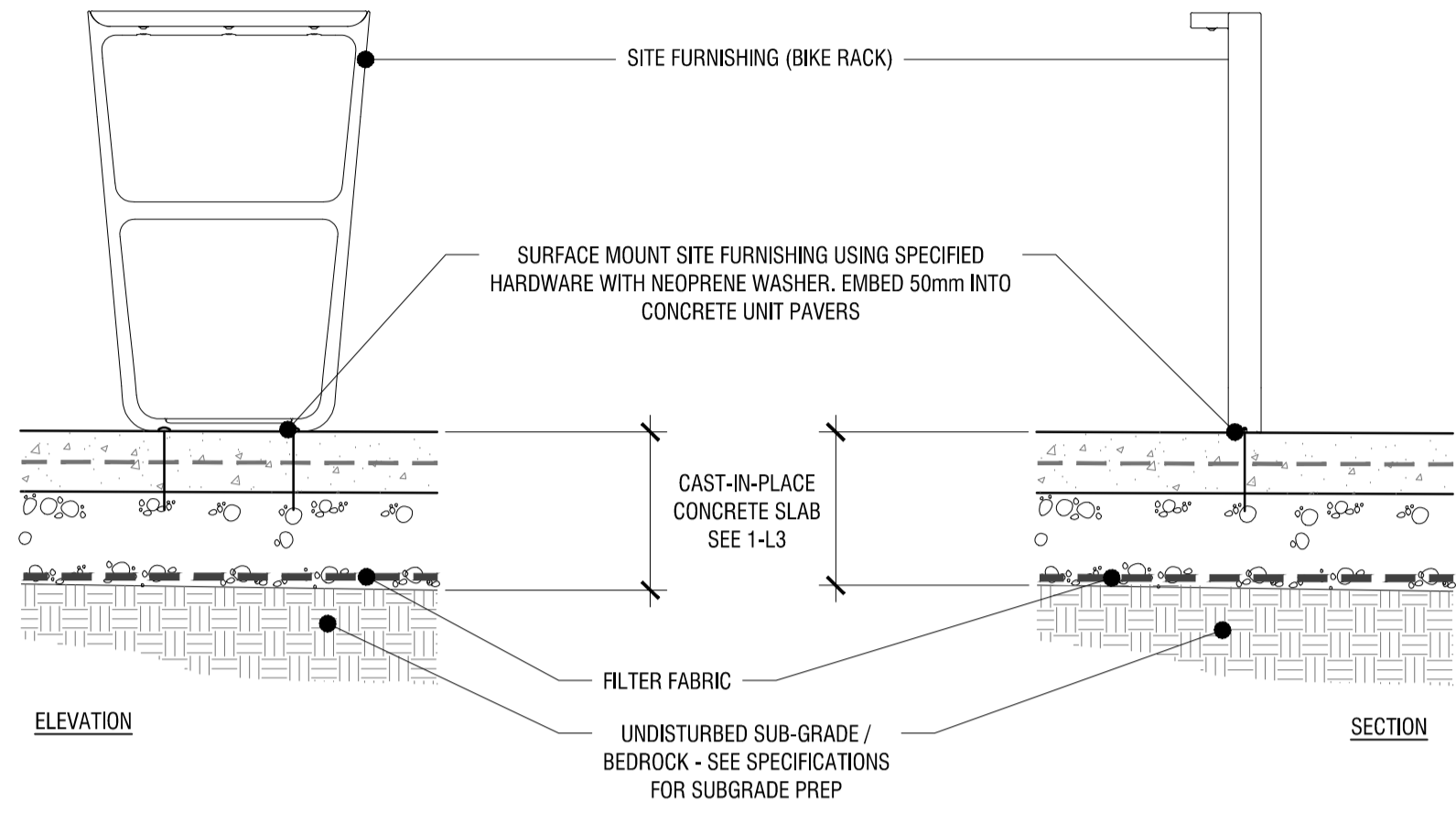
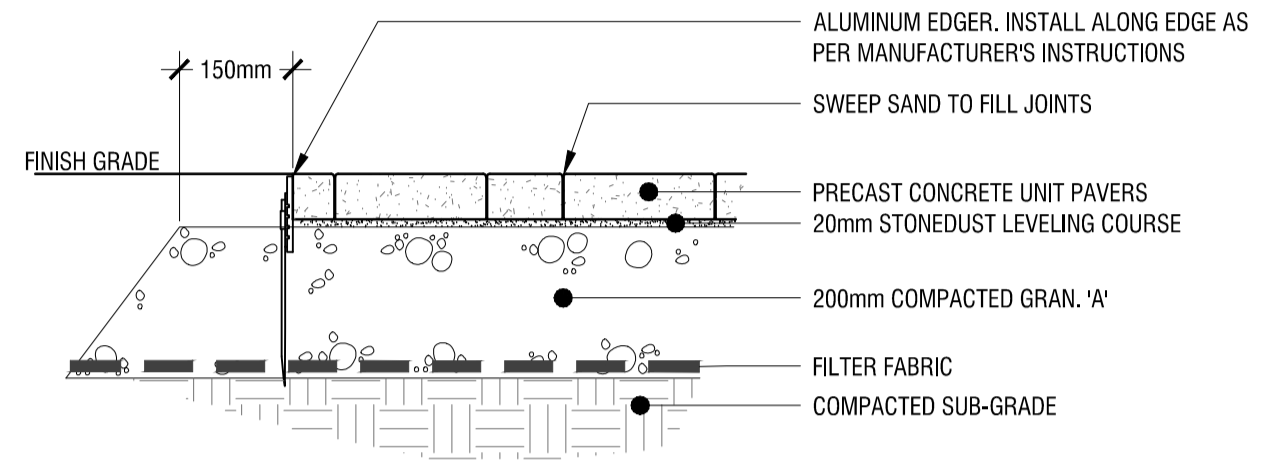
**2851944 Ontario Inc.
 14 Breadner Blvd.**

key plan / plan repère

legend / légende



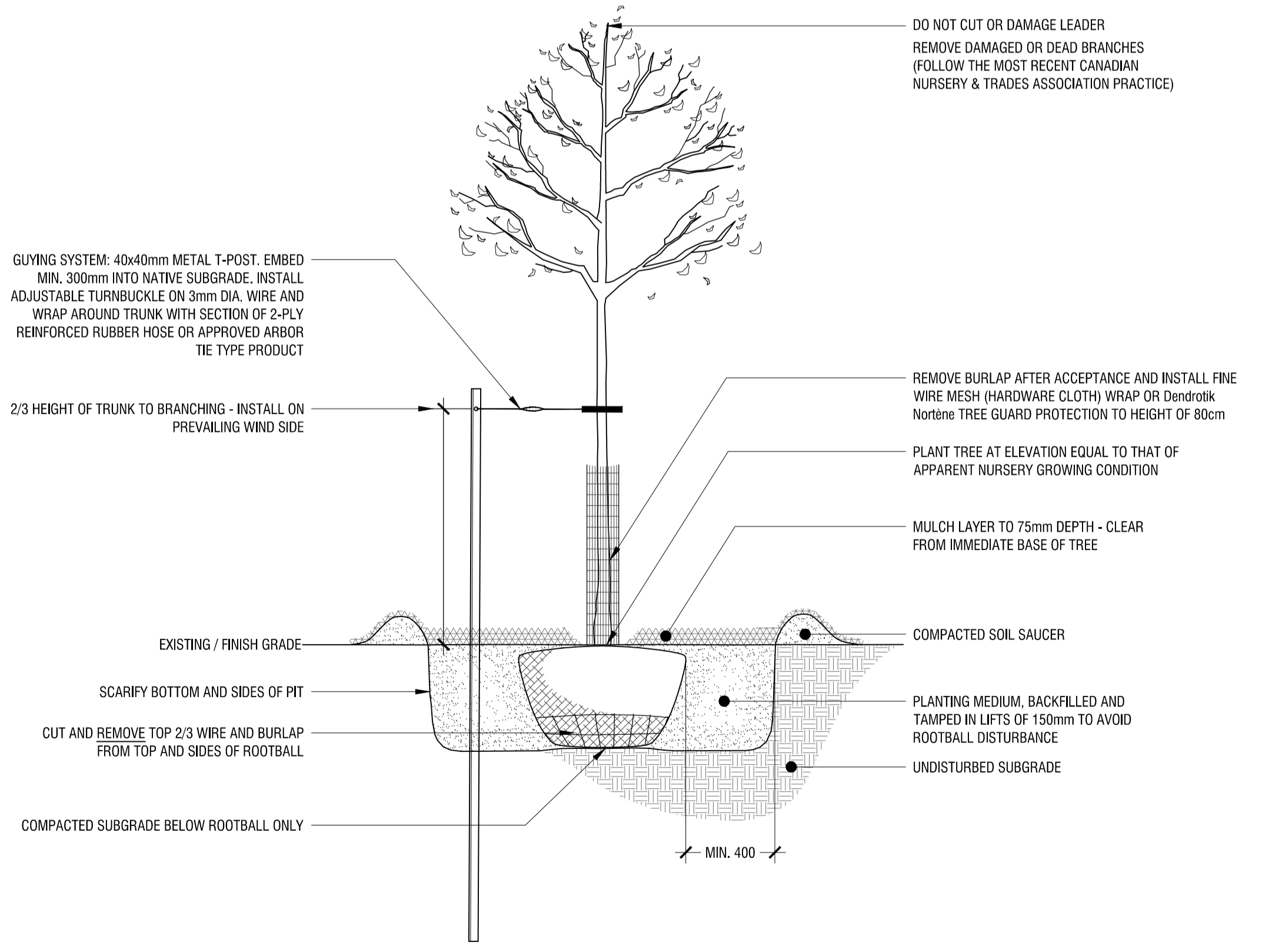
- NOTES:**
- CONCRETE TO BE 30MPa (4000 PSI) WITH 5-7% AIR ENTRAINMENT AND LIGHT BROOM FINISH;
 - EXPANSION JOINTS: 13mm THICK BITUMINOUS FIBRE BOARD WITH 300mm, 10m DOWELS @ 600mm O.C., GREASED OR SLEEVED ON ONE END;
 - SAW-CUT JOINTS: TO 10mm DEPTH;
 - SEE PLAN FOR JOINTING LAYOUT



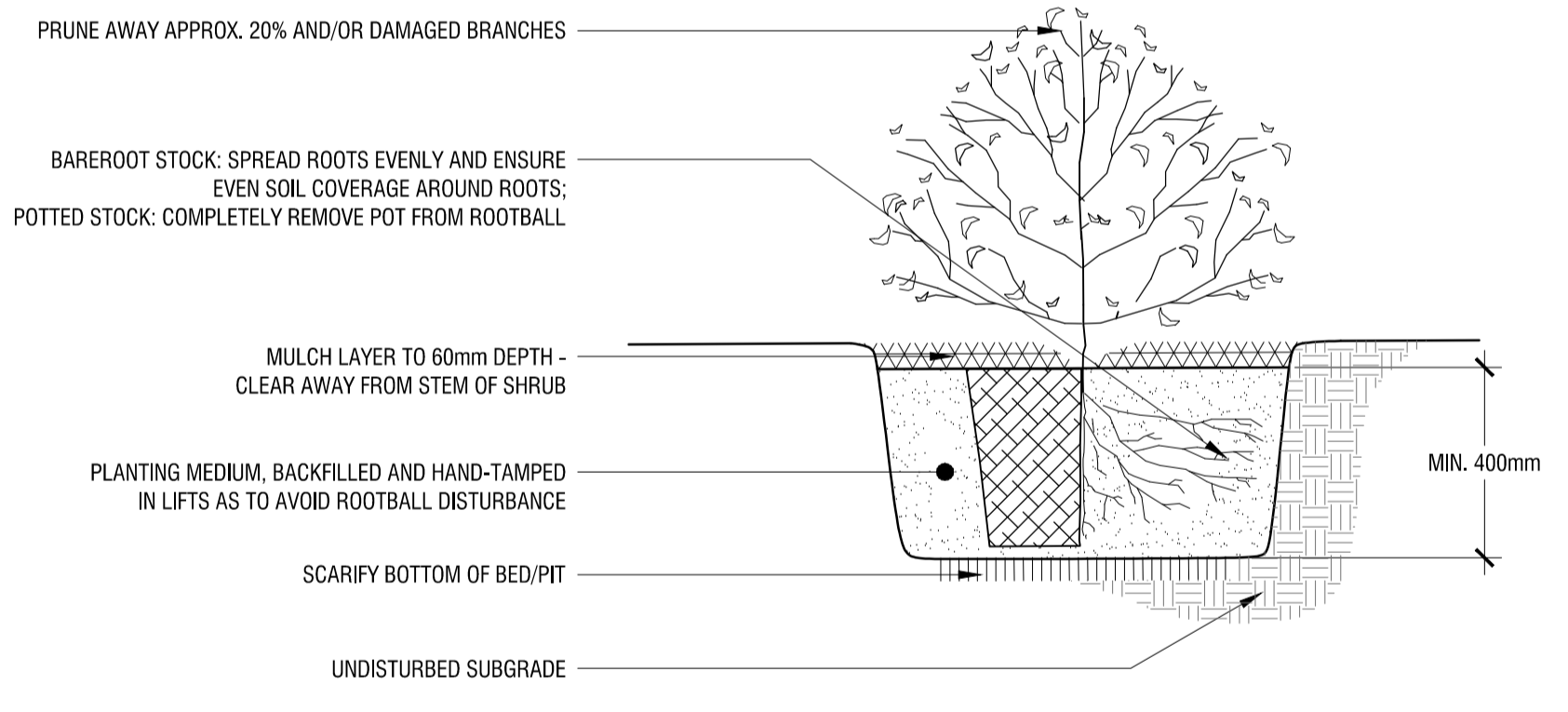
1 CAST IN PLACE CONCRETE PAVING
L3 1:10

2 PRECAST UNIT PAVERS
L3 1:10

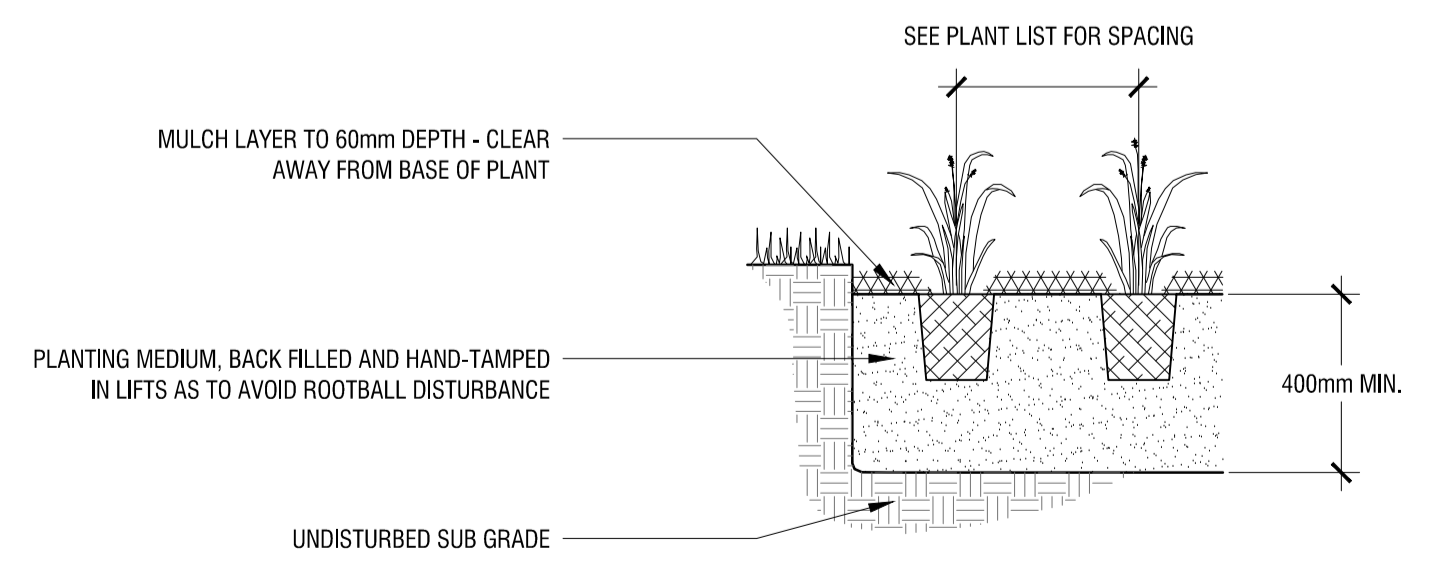
3 SURFACE MOUNTED BIKE RACK AT C.I.P. CONCRETE PAVING
L3 1:15



4 DECIDUOUS TREE PLANTING
L3 n.t.s.



5 SHRUB PLANTING
L3 n.t.s.



6 PERENNIAL PLANTING
L3 n.t.s.

rev'n	description / la description	yyyy/mm/dd
00	Issue for ZBLA and SPC	2022/12/14

FOTENN Planning + Design
 395 Cooper Street, Suite 300
 Ottawa, ON, CANADA K2P 2H7
 613.730.5709
 fotenn.com

north / le nord stamp / le cachet

4 STOREY APARTMENT
1806 Scott Street

drawing / dessin

LANDSCAPE DETAILS

designed / conçu	drawn / dessiné	reviewed / examiné
BM	BM	SM / DF
date	project number / No. du projet	
June 2022		

drawing number / No. du dessin

PRELIMINARY
 NOT FOR CONSTRUCTION

PLOT INFORMATION: DWG NAME: P:\PROJECTS\Library_Civil\1806 Scott St\LANDSCAPE_ARCH\5.1.DESIGN\DEVELOPMENT\PCAS\DWG\1806_ScottSt-L3.dwg PLOT DATE: 2023-01-20 1:44:46 PM SHEET SIZE: ISO (A1) (841x1189) PLOTTED BY: emilija.Moriana LAST SAVED BY: emilija.Moriana