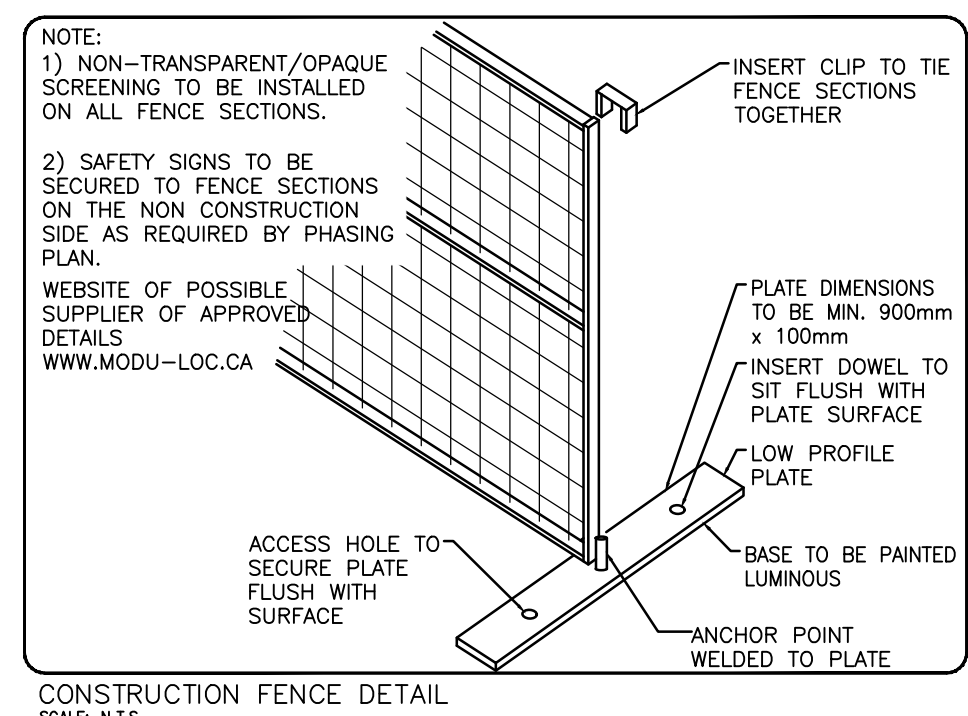
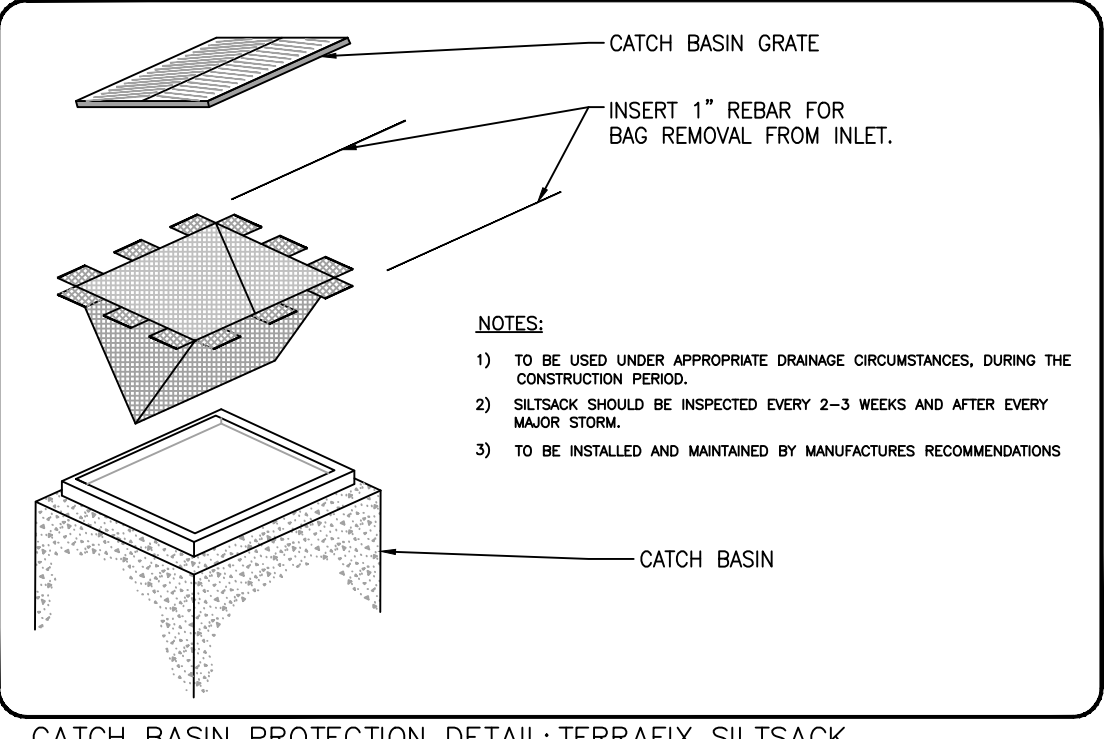


Thermal Insulation for Water Mains in Shallow Trenches

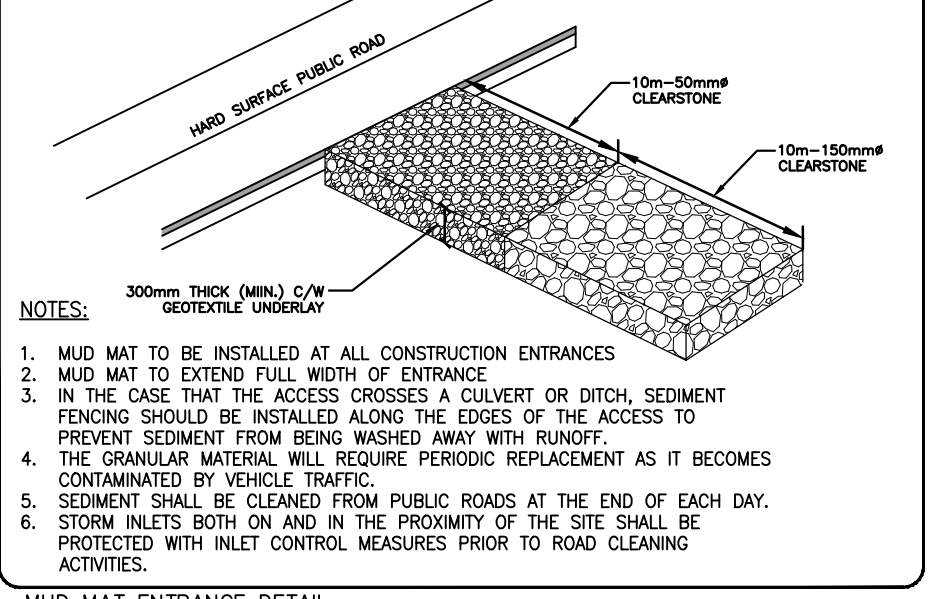
DATE: MAY 2001
 DESIGNED: MARCH 2013
 DWG. NO.: W22



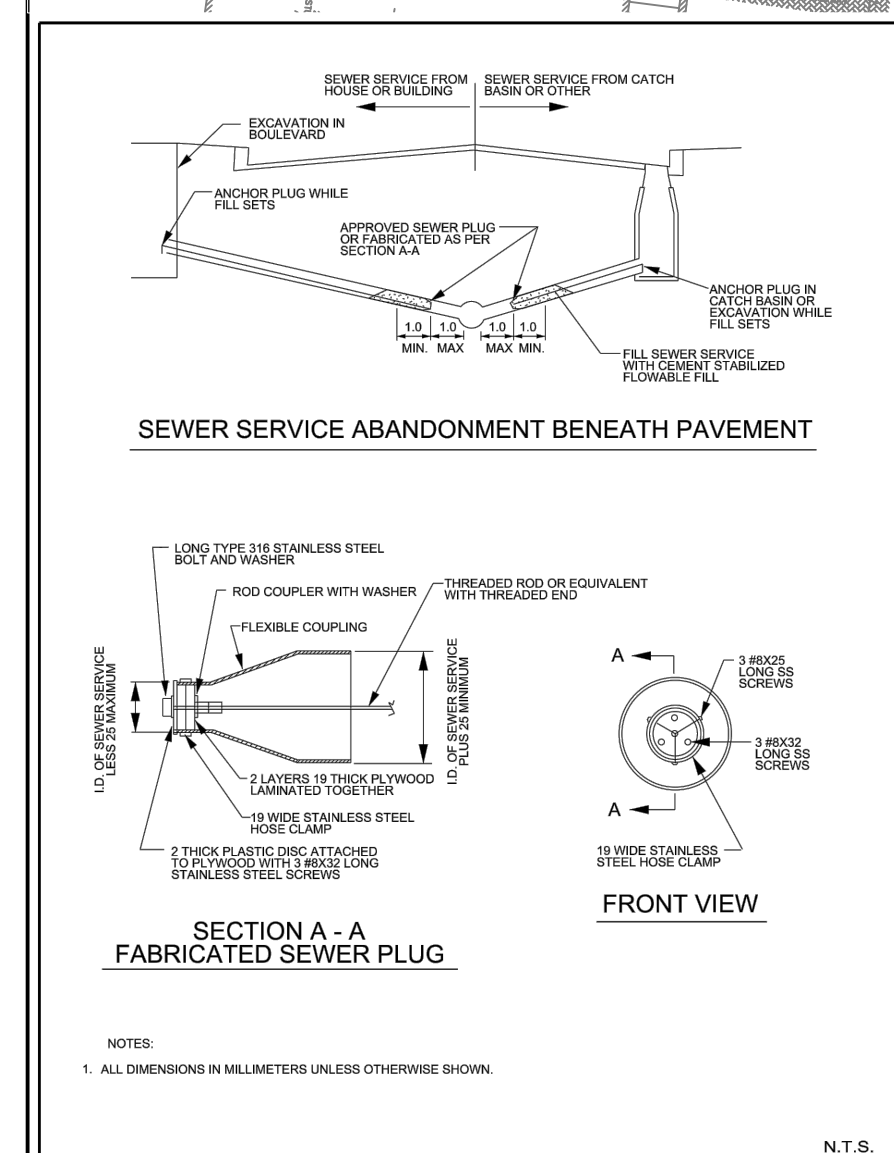
CONSTRUCTION FENCE DETAIL
 SCALE: N.T.S.



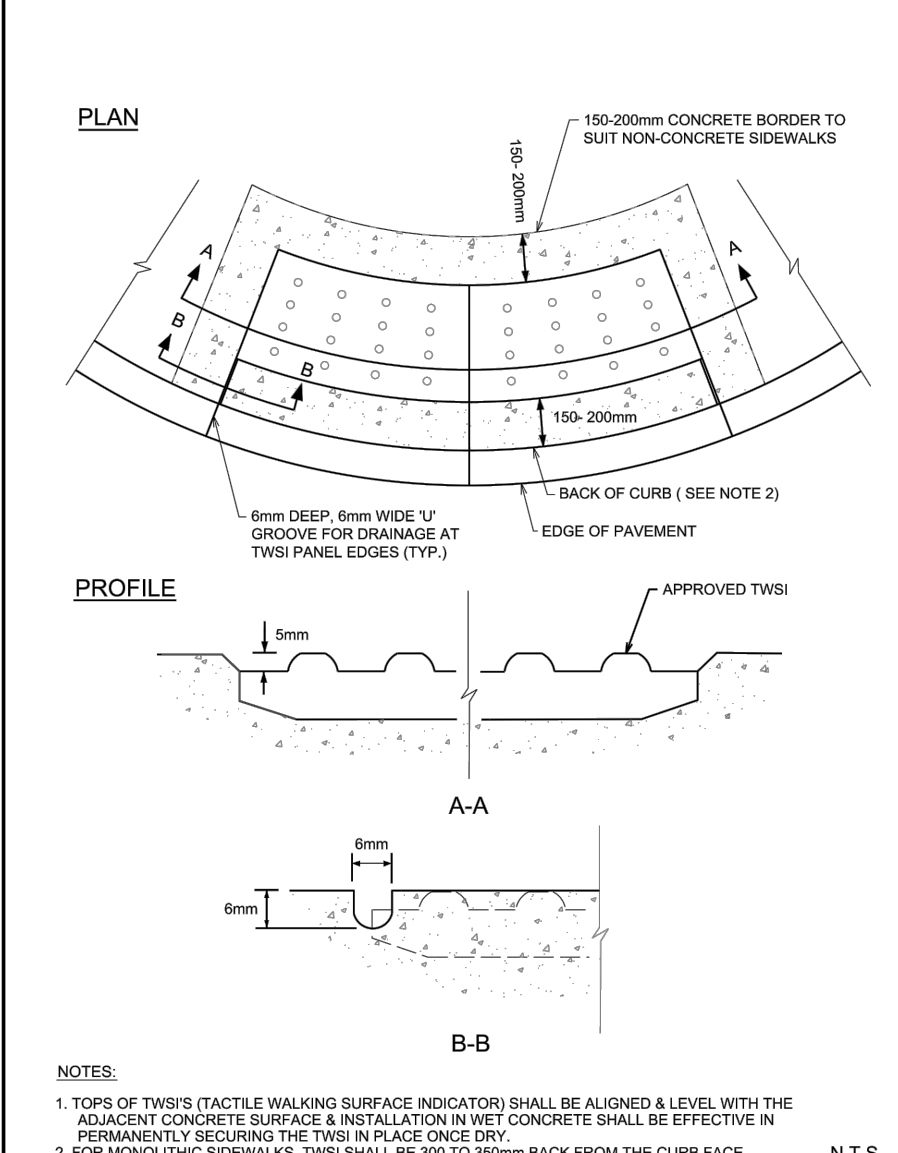
CATCH BASIN PROTECTION DETAIL: TERRAFIX SILTSACK
 SCALE: N.T.S.



MUD MAT ENTRANCE DETAIL
 SCALE: N.T.S.



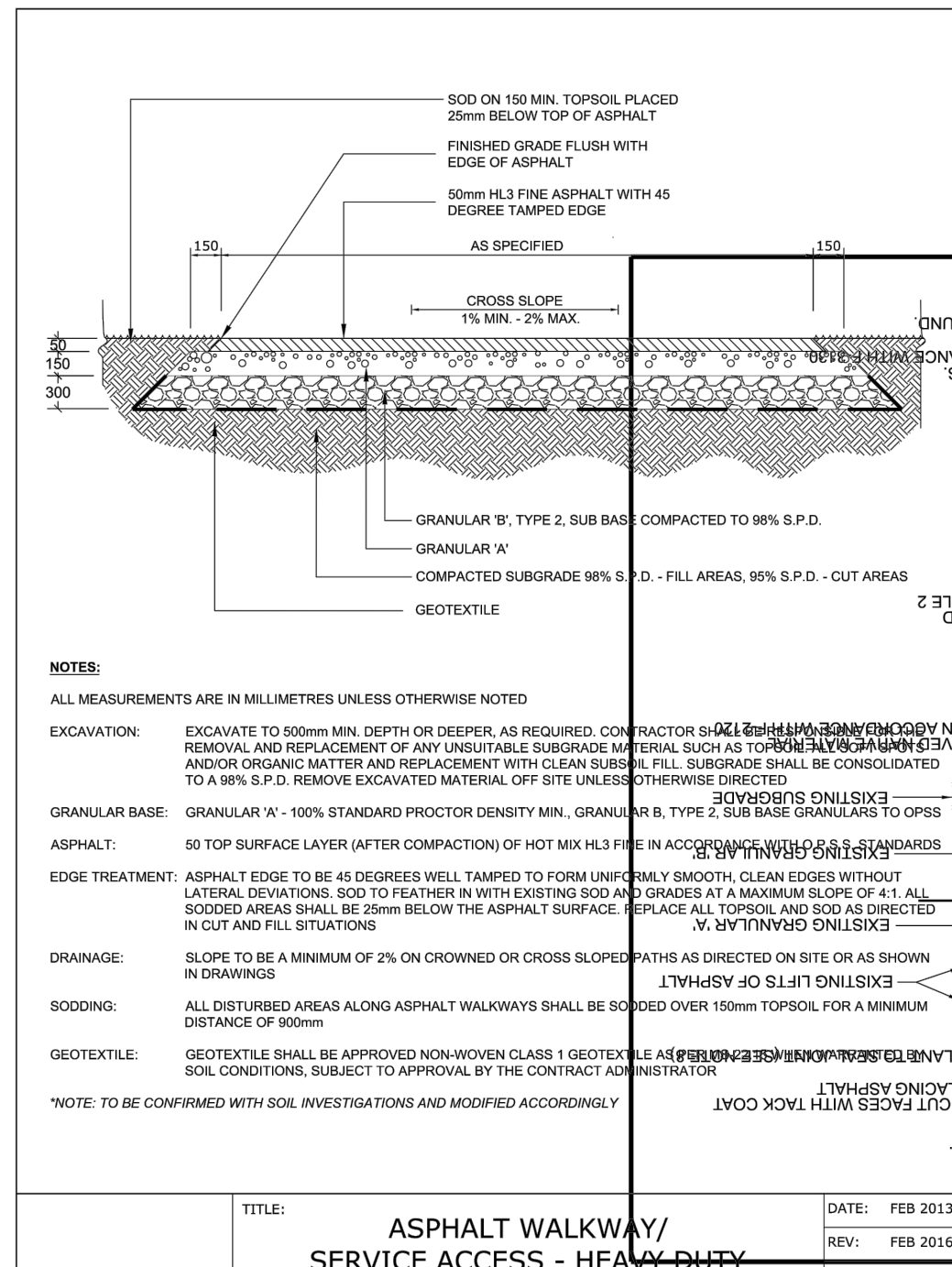
SEWER SERVICE ABANDONMENT BENEATH PAVEMENT
 N.T.S.



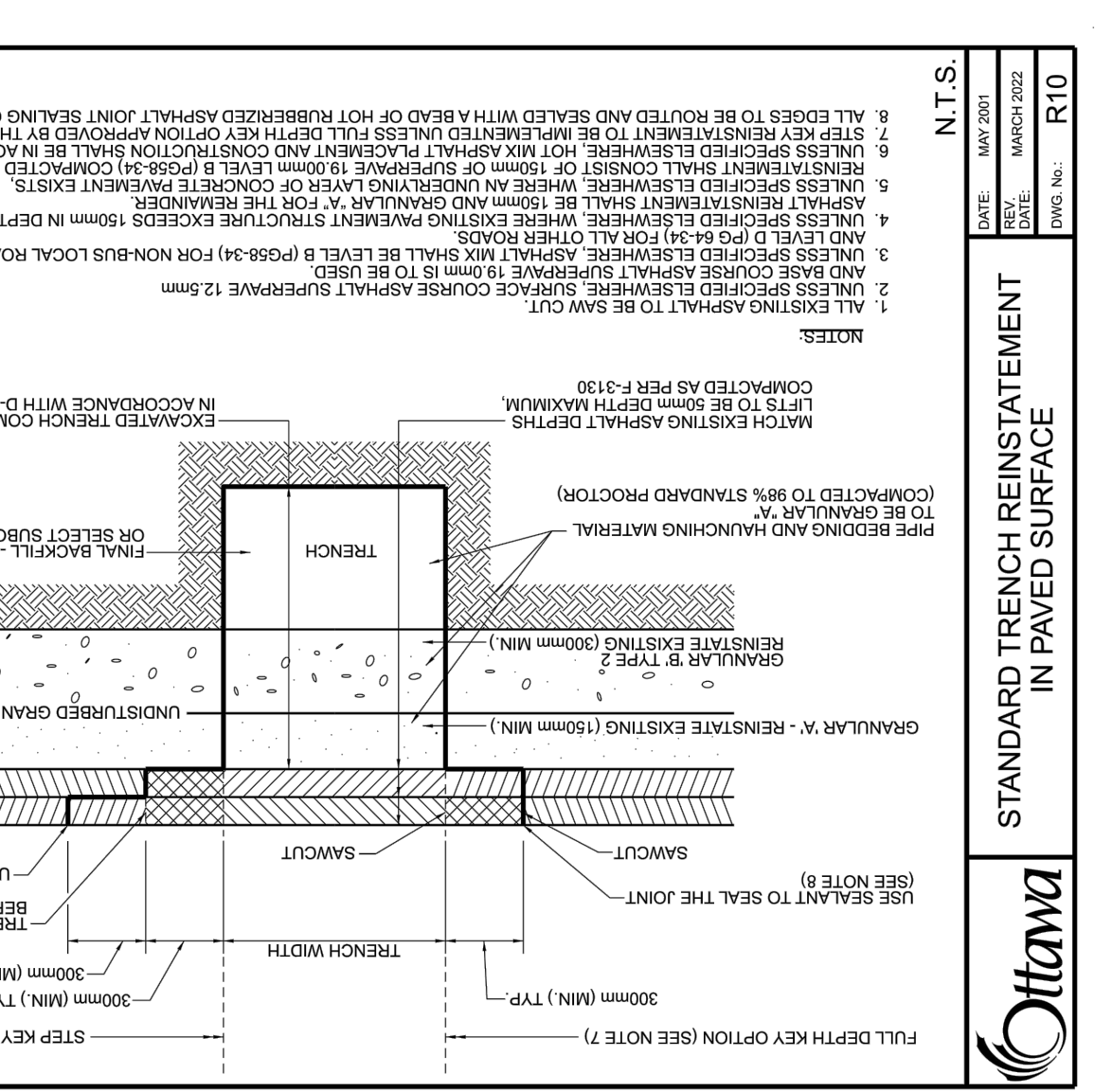
TWSI DETAIL
 N.T.S.



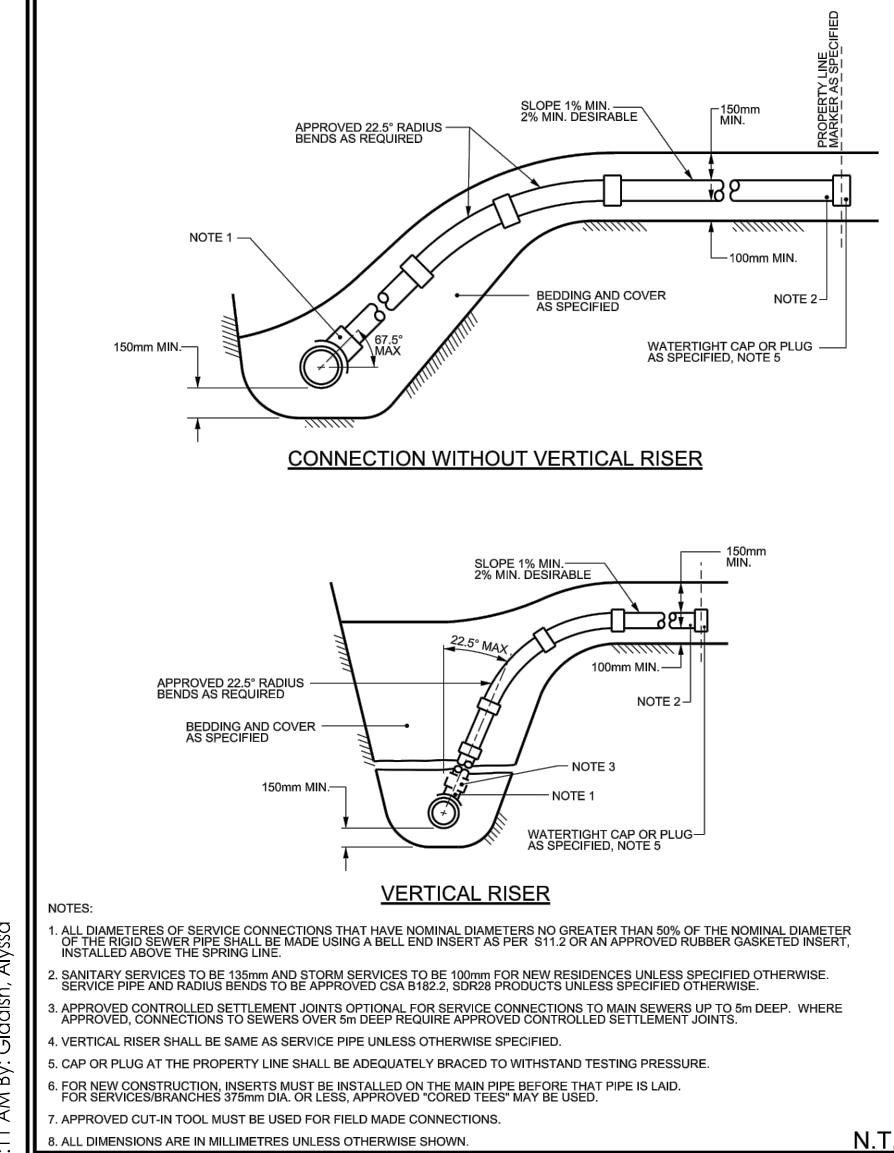
LIGHT-DUTY SILT FENCE BARRIER
 OPSD 219.110



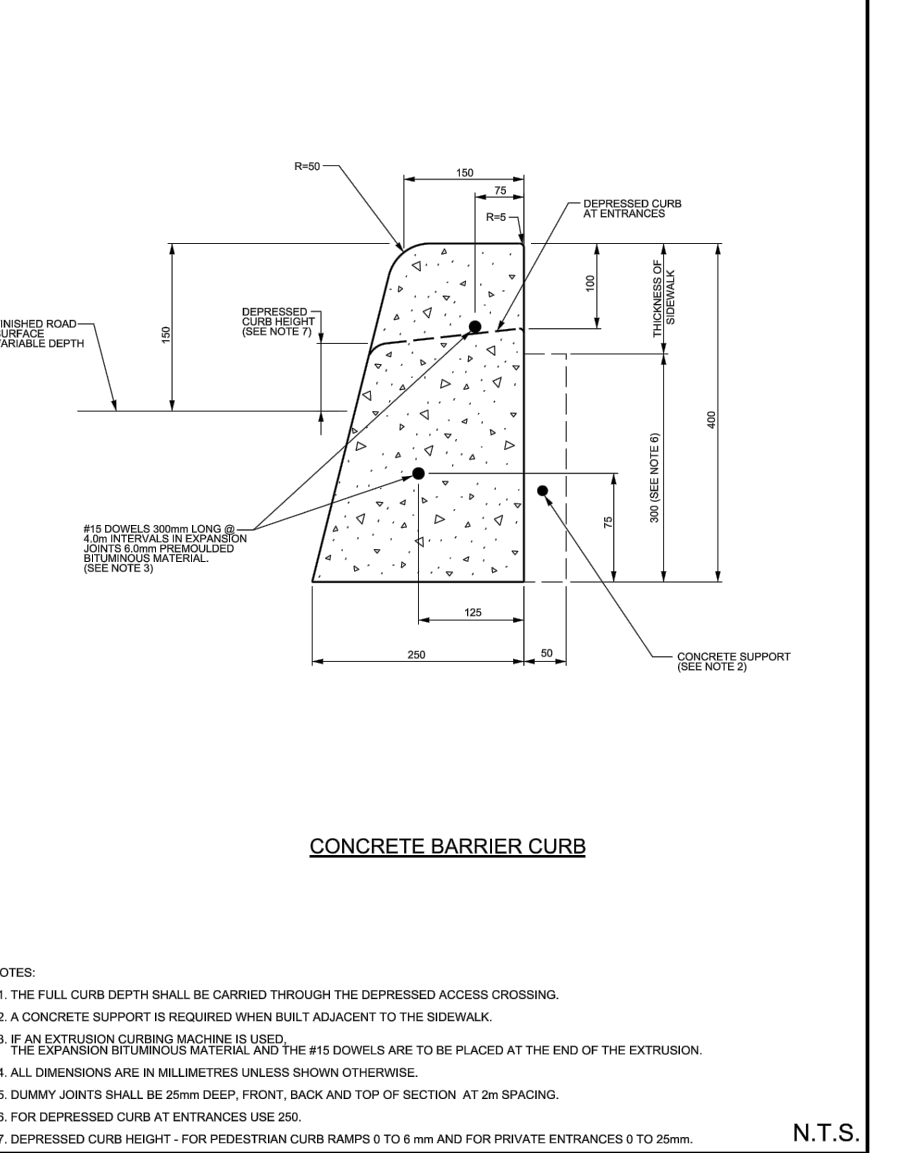
ASPHALT WALKWAY/SERVICE ACCESS - HEAVY DUTY
 DATE: FEB 2013
 REV: FEB 2016
 DWG. NO.: SC21



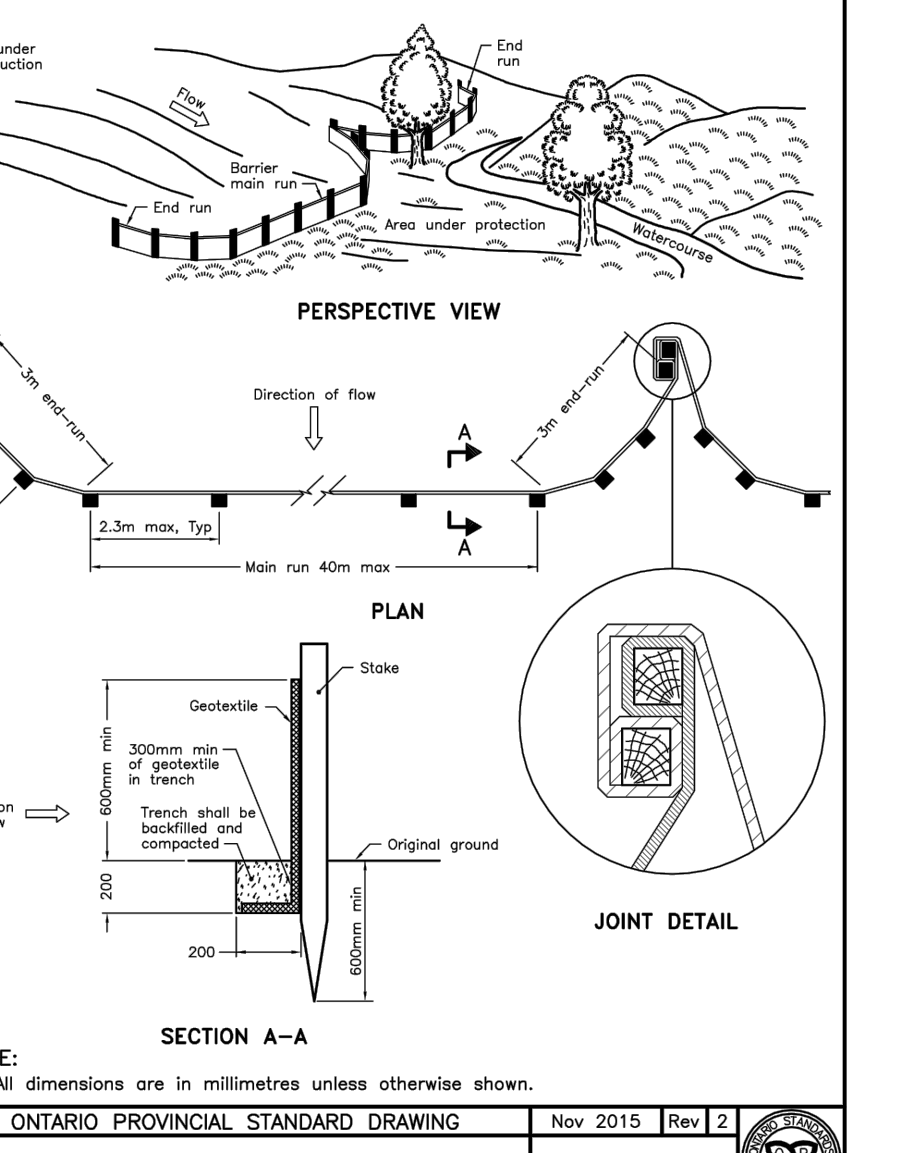
STANDARD TRENCH REINSTATEMENT IN PAVED SURFACE
 DATE: MAY 2001
 REV: MARCH 2002
 DWG. NO.: R10



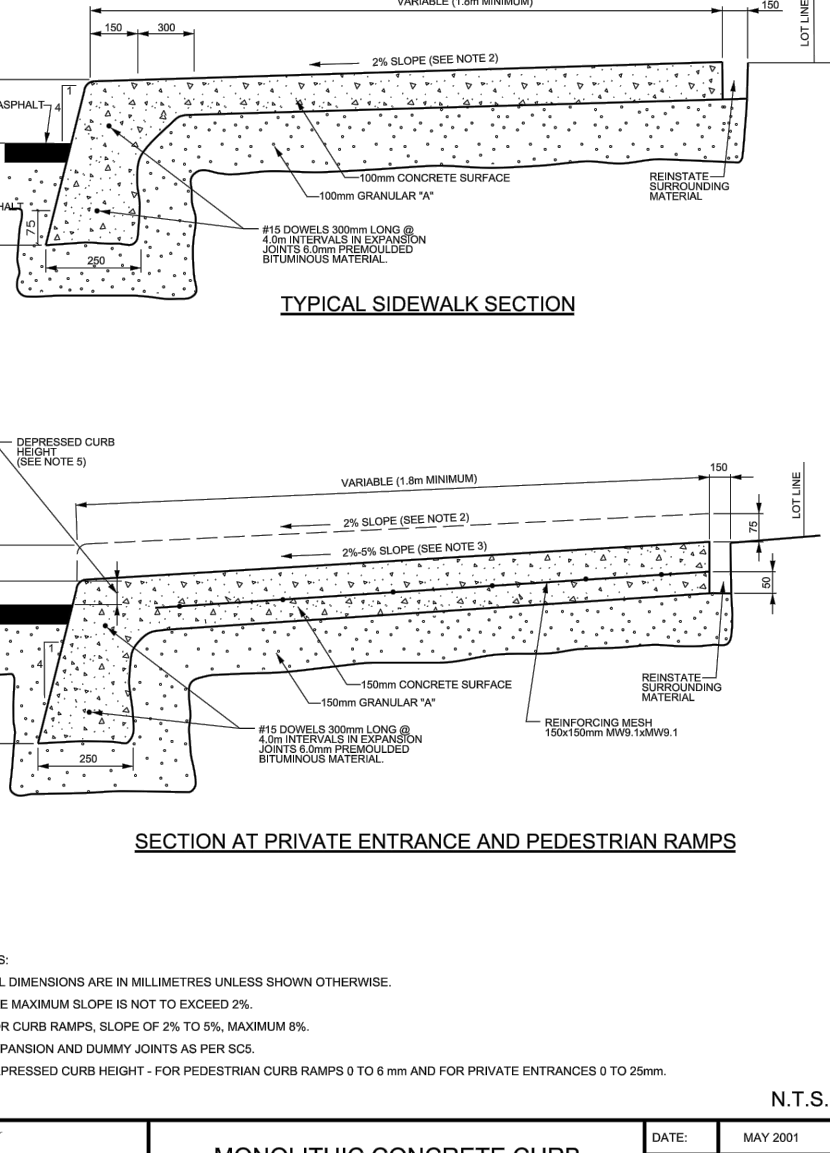
SEWER SERVICE CONNECTIONS FOR RIGID MAIN SEWER PIPE (MODIFIED OPSD-1006.010)
 DATE: MARCH 2004
 REV: MARCH 2014
 DWG. NO.: S11



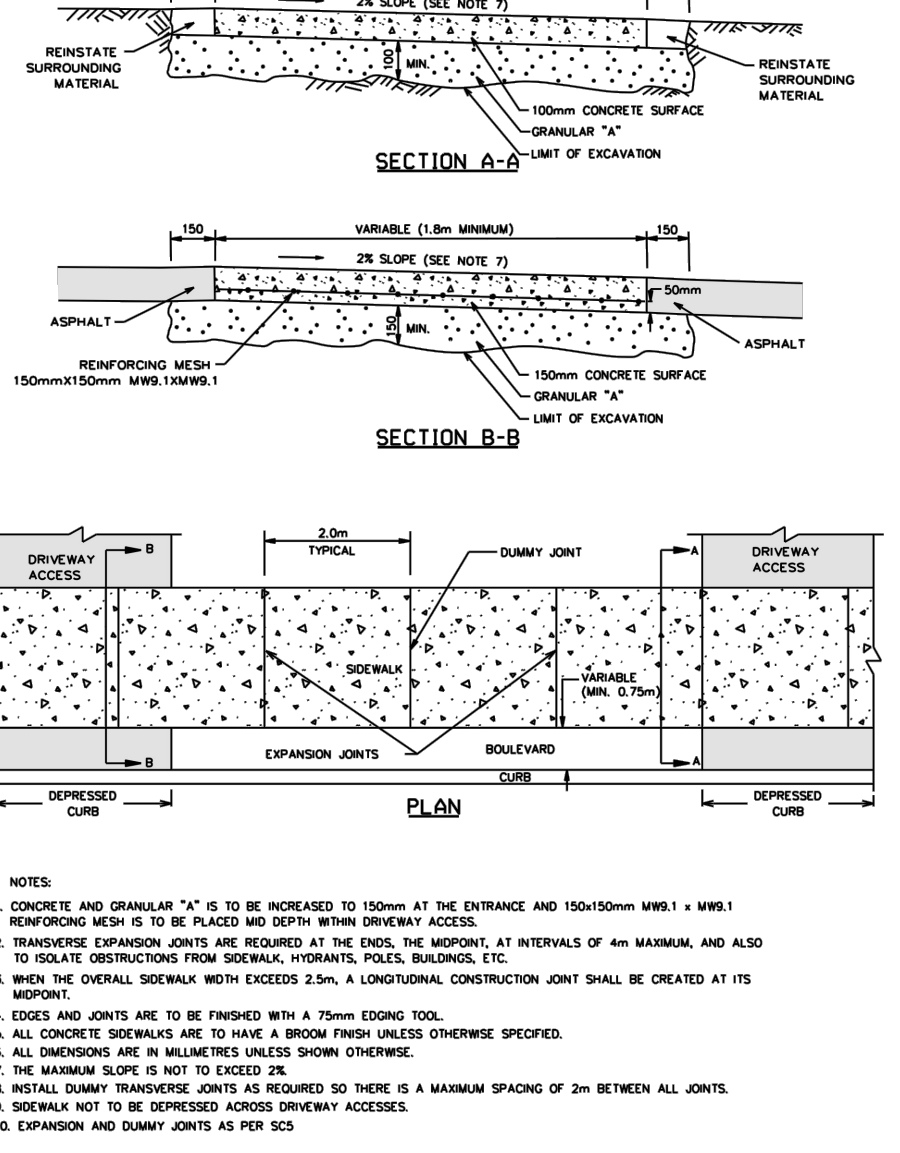
CONCRETE BARRIER CURB FOR GRANULAR BASE PAVEMENT (MODIFIED OPSD-600.110)
 DATE: JANUARY 2003
 REV: MARCH 2014
 DWG. NO.: SC1.1



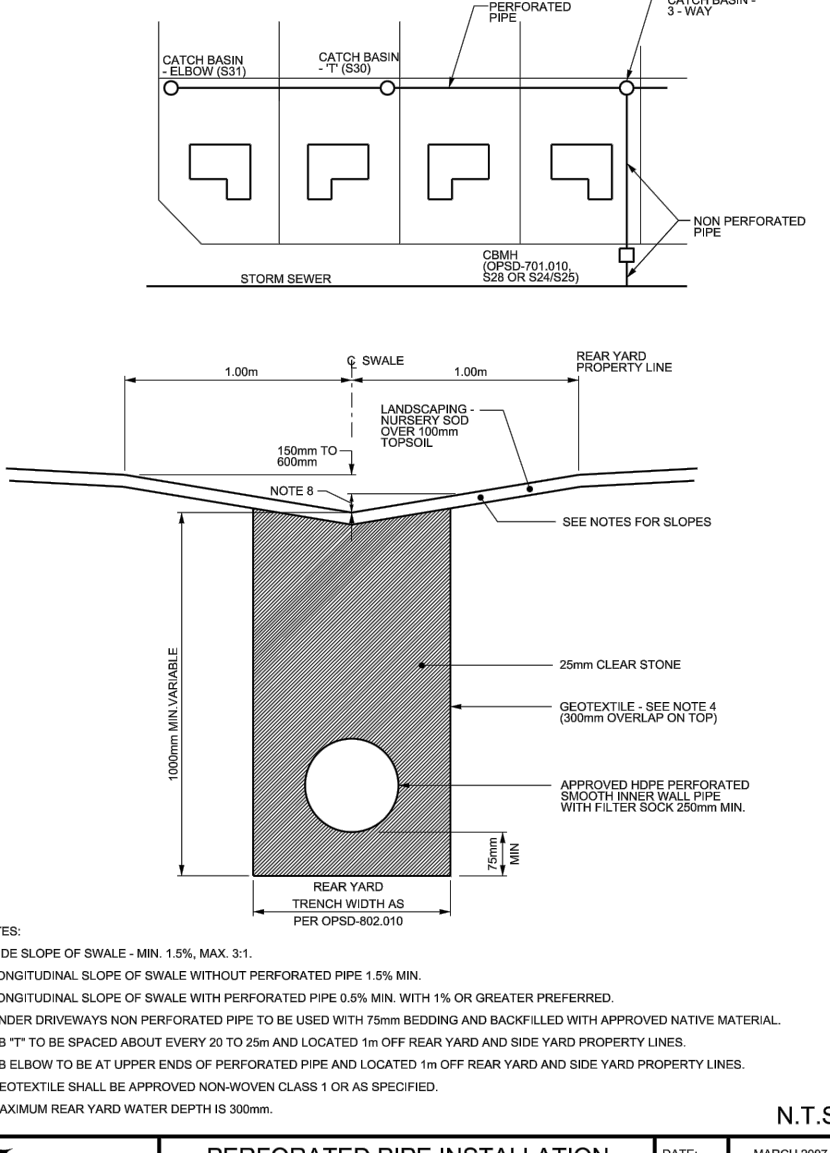
ONTARIO PROVINCIAL STANDARD DRAWING
 Nov 2015 | Rev 2
OPSD 219.110



MONOLITHIC CONCRETE CURB AND SIDEWALK
 DATE: MAY 2001
 REV: MARCH 2013
 DWG. NO.: SC2



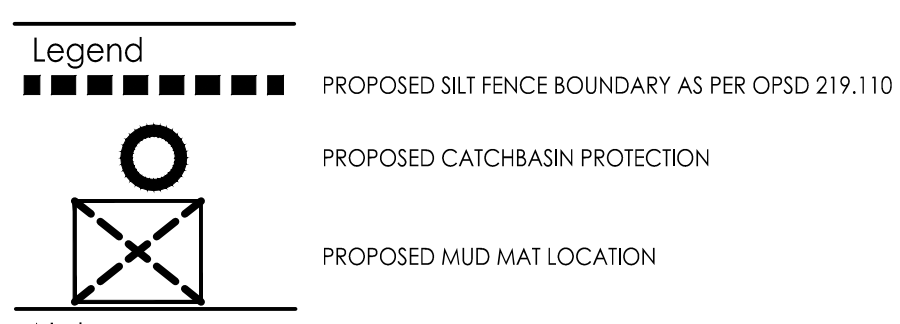
TYPICAL CONCRETE SIDEWALK IN BOULEVARD
 DATE: MAY 2001
 REV: MARCH 2013
 DWG. NO.: SC4



PERFORATED PIPE INSTALLATION FOR REAR YARD AND LANDSCAPING APPLICATIONS
 DATE: MARCH 2007
 REV: MARCH 2017
 DWG. NO.: S29

Stantec Consulting Ltd.
 400 - 1331 Clyde Avenue
 Ottawa ON
 Tel. 613.722.4420
 www.stantec.com

Copyright Reserved
 The Contractor shall verify and be responsible for all dimensions. DO NOT scale the drawings - any errors or omissions shall be reported to Stantec without delay.
 The Copyrights to all designs and drawings are the property of Stantec. Reproduction or use for any purpose other than that authorized by Stantec is forbidden.



Notes

Best Management Practices
 CONTRACTOR TO PROVIDE EROSION AND SEDIMENT CONTROLS (BEST MANAGEMENT PRACTICES) DURING CONSTRUCTION OF THIS PROJECT.
 EROSION MUST BE MINIMIZED AND SEDIMENTS MUST BE REMOVED FROM CONSTRUCTION SITE RUN-OFF IN ORDER TO PROTECT DOWNSTREAM AREAS. DURING ALL CONSTRUCTION, EROSION AND SEDIMENTATION SHOULD BE CONTROLLED BY THE FOLLOWING TECHNIQUES:

- LIMIT THE EXTENT OF EXPOSED SOILS AT ANY GIVEN TIME.
- REVEGETATE EXPOSED AREAS AND SLOPES AS SOON AS POSSIBLE.
- MINIMIZE AREA TO BE CLEARED AND GRUBBED.
- PROTECT EXPOSED SLOPES WITH PLASTIC OR SYNTHETIC MULCHES.
- INSTALL CATCH BASIN INSERTS OR EQUIVALENT IN ALL PROPOSED CATCH BASINS AND CATCH BASIN MANHOLES AND IN ALL EXISTING CATCH BASINS THAT WILL RECEIVE RUN-OFF FROM THE SITE.
- A SILT FENCE SHALL BE INSTALLED AROUND THE PERIMETER OF ALL AND ANY STOCKPILES OF MATERIAL TO BE USED OR REMOVED FROM SITE. (LOCATION TO BE DETERMINED)
- A VISUAL INSPECTION SHALL BE DONE ONLY ON SEDIMENT CONTROL MEASURES AND CLEARED OF ANY ACCUMULATED SILT AS REQUIRED. THE DEPOSITS WILL BE DISPOSED OFF SITE AS PER THE REQUIREMENTS OF THE CONTRACT.
- SEDIMENT CONTROL BARRIERS MAY ONLY BE REMOVED TEMPORARILY WITH APPROVAL OF CONTRACT ADMINISTRATOR TO ACCOMMODATE CONSTRUCTION OPERATIONS. ALL AFFECTED BARRIERS MUST BE REINSTATED AT NIGHT WHEN CONSTRUCTION IS COMPLETED. NO REMOVAL WILL OCCUR IF THERE IS A SIGNIFICANT RAINFALL EVENT ANTICIPATED (1-HOUR) UNLESS A NEW DEVICE HAS BEEN INSTALLED TO PROTECT EXISTING STORM AND SANITARY SEWER SYSTEMS, OR DOWNSTREAM WATERCOURSES.
- NO REFUELING OR CLEANING OF EQUIPMENT IS PERMITTED NEAR ANY EXISTING WATERWAY.
- CONTRACTOR SHALL REMOVE SEDIMENT CONTROL MEASURES WHEN, IN THE OPINION OF THE CONTRACT ADMINISTRATOR, THE MEASURE(S) IS NO LONGER REQUIRED. NO CONTROL MEASURES SHALL BE PERMANENTLY REMOVED WITHOUT PRIOR WRITTEN AUTHORIZATION FROM THE CONTRACT ADMINISTRATOR.
- THE CONTRACTOR SHALL PERIODICALLY, OR WHEN REQUESTED BY THE CONTRACT ADMINISTRATOR, CLEAN OUT ACCUMULATED SEDIMENTS AS REQUIRED.
- THE CONTRACTOR SHALL IMMEDIATELY REPORT TO THE ENGINEER ANY ACCIDENTAL DISCHARGES OF SEDIMENT MATERIAL INTO THE WATERCOURSE. APPROPRIATE RESPONSE MEASURES, INCLUDING ANY REPAIRS TO EXISTING CONTROL MEASURES OR THE IMPLEMENTATION OF ADDITIONAL CONTROL MEASURES, SHALL BE CARRIED OUT BY THE CONTRACTOR WITHOUT DELAY.
- STORMWATER SWALES TO BE COVERED WITH HYDRO-SEED AND MULCH.
- A SILT FENCE SHALL BE INSTALLED AROUND THE PERIMETER OF THE SITE AS INDICATED.
- INSTALL TRACKOUT CONTROL MATS AT THE ENTRANCE/EGRESS TO PREVENT MIGRATION OF SEDIMENT INTO THE PUBLIC RIGHT OF WAY.

Revision	By	Appd.	YY.MM.DD
2	JP	AG	23.07.28
1	JP	AG	22.11.29

File Name:	JP	AG	JP	22.08.05
	Dwn.	Chkd.	Dgn.	YY.MM.DD

Permit-Seal

Client/Project
 2851944 Ontario Inc.
 14 Broadbrd Blvd.
 4 STOREY APARTMENT
 1806 SCOTT STREET
 OTTAWA, ONTARIO

Title
EROSION CONTROL PLAN AND DETAIL SHEET

Project No.	Scale	Revision
160401747	AS SHOWN	
Drawing No.	Sheet	Revision
EC/DS-1	4 of 6	2