

LEGEND

- FFL FINISHED FLOOR ELEVATION
- TOF TOP OF FOUNDATION
- BFL BASEMENT FLOOR ELEVATION
- USF UNDERSIDE OF FOOTING
- PROPERTY LINE
- CRZ CRITICAL ROOT ZONE
- CB CATCH-BASIN
- MH STORM MANHOLE
- CB/MH CATCH-BASIN/MANHOLE
- MH SANITARY MANHOLE
- FH FIRE HYDRANT
- FDC FIRE DEPARTMENT CONNECTION
- +99.99 EXISTING GRADE ELEVATION
- +99.99 PROPOSED GRADE ELEVATION
- 2% EXISTING SLOPE OF GRADE
- 2% PROPOSED SLOPE OF GRADE
- ⇨ EMERGENCY OVERLAND FLOW
- T.O.S TOP OF SLOPE
- B.O.S BOTTOM OF SLOPE
- CENTERLINE OF SWALE
- 150mm BARRIER CURB
- D.C DEPRESSED CURB
- /// LIGHT-DUTY PAVEMENT
- /// HEAVY-DUTY PAVEMENT
- CONCRETE
- LANDSCAPE

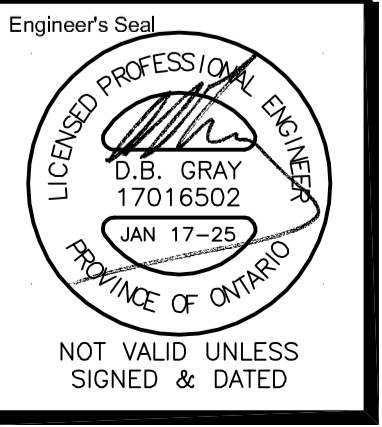


No.	DATE	REVISION
4	JAN 17-25	ISSUED FOR ZONING
3	DEC 6-24	ISSUED FOR BUILDING PERMIT
2	DEC 21-22	ISSUED FOR APPROVAL
1	DEC 19-22	ISSUED FOR COORDINATION

D. B. GRAY ENGINEERING INC.
Stormwater Management - Grading & Drainage - Storm & Sanitary Sewers - Watermain
 700 Long Point Circle
 Ottawa, Ontario
 613-425-8044
 d.gray@dbgrayengineering.com

PROPOSED 6-STORY MIXED-USE BUILDING
2040 ARROWSMITH DRIVE
 OTTAWA, ONTARIO

GRADING PLAN AND EROSION & SEDIMENT CONTROL PLAN (NORTH)



Engineer's Seal
 Drawn D.B.G.
 H. Scale 1:150
 V. Scale
 Date NOV 29-22
 Job No. 22062

Drawing No.
C-7
 of 17