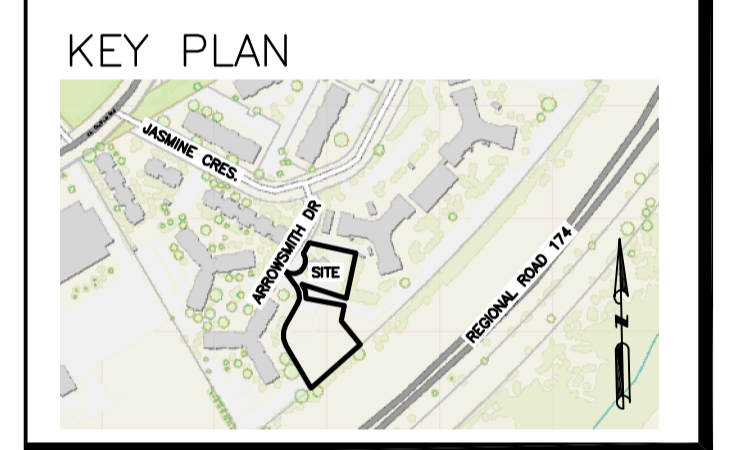


LEGEND

- FFL FINISHED FLOOR ELEVATION
- TOF TOP OF FOUNDATION
- BFL BASEMENT FLOOR ELEVATION
- USF UNDERSIDE OF FOOTING
- PROPERTY LINE
- C.R.Z CRITICAL ROOT ZONE
- CB CATCH-BASIN
- MH STORM MANHOLE
- CB/MH CATCH-BASIN/MANHOLE
- MH SANITARY MANHOLE
- FH FIRE HYDRANT
- FDC FIRE DEPARTMENT CONNECTION
- VB VALVE & VALVE BOX
- M WATER METER
- R REMOTE WATER METER
- SAN SANITARY SEWER
- ST STORM SEWER
- WS/WM WATER SERVICE/WATERMAIN
- OBV OBVERT OF PIPE
- SPL SPRINGLINE OF PIPE
- INV INVERT OF PIPE
- I.O.S TOP OF SLOPE
- B.O.S BOTTOM OF SLOPE
- CENTERLINE OF SWALE
- 150mm BARRIER CURB
- D.C DEPRESSED CURB
- ROAD CUT REINSTATEMENT

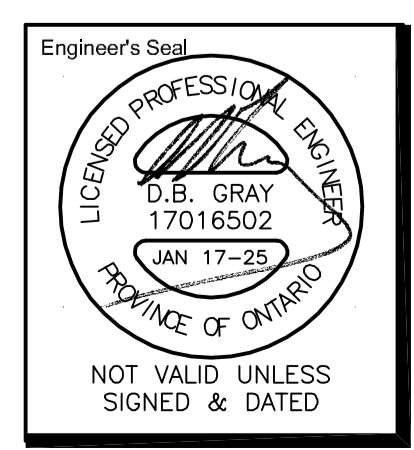


No.	DATE	REVISION
2	JAN 17-25	ISSUED FOR ZONING
1	DEC 6-24	ISSUED FOR BUILDING PERMIT

D. B. GRAY ENGINEERING INC.
 Stormwater Management - Grading & Drainage - Storm & Sanitary Sewers - Watermain
 700 Long Point Circle 613-425-8044
 Ottawa, Ontario d.gray@dbgrayengineering.com

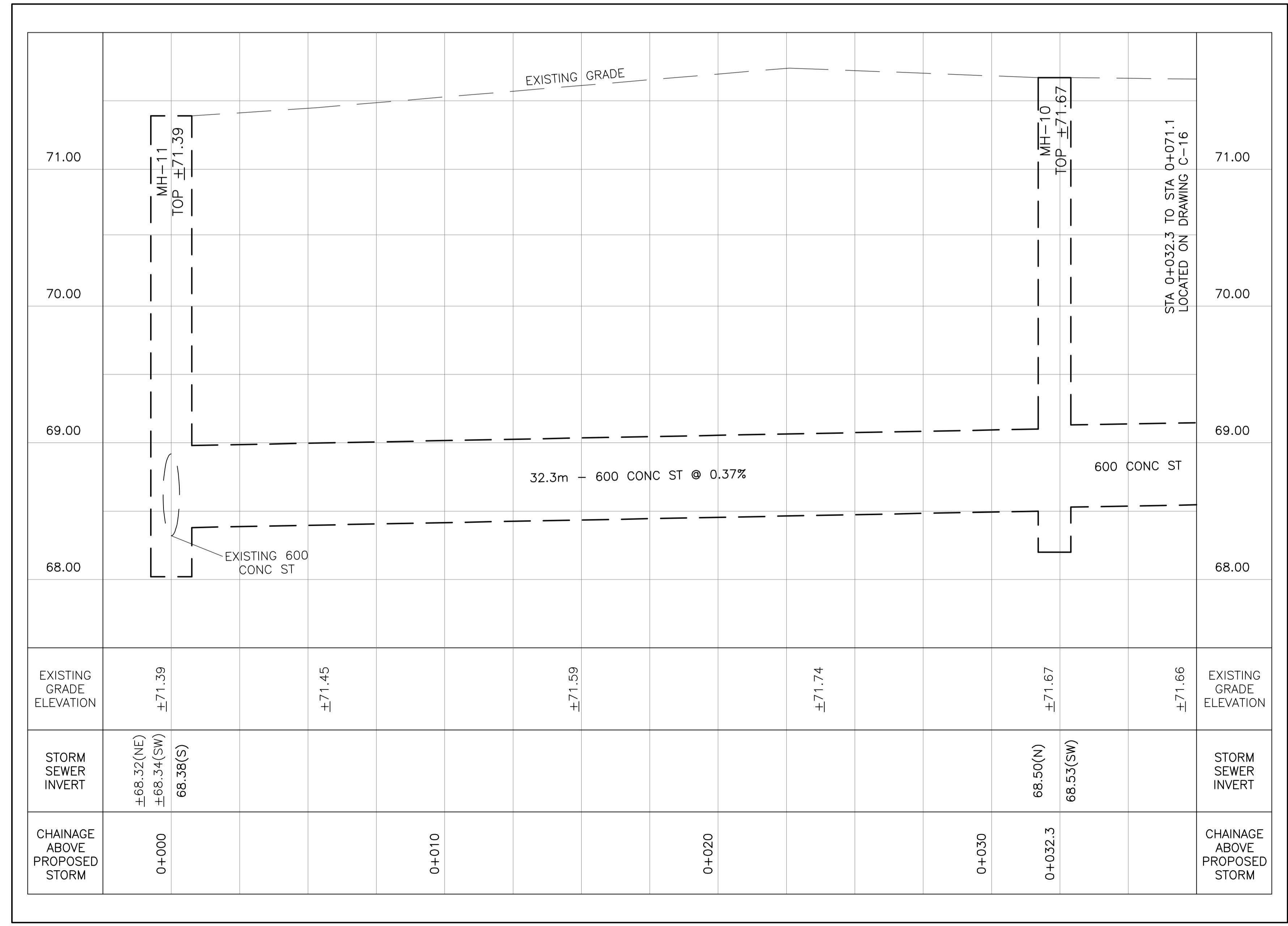
Project
PROPOSED 6-STORY MIXED-USE BUILDING
2040 ARROWSMITH DRIVE
 OTTAWA, ONTARIO

Drawing Title
PLAN AND PROFILE
 STA 0+000.0 TO 0+032.3

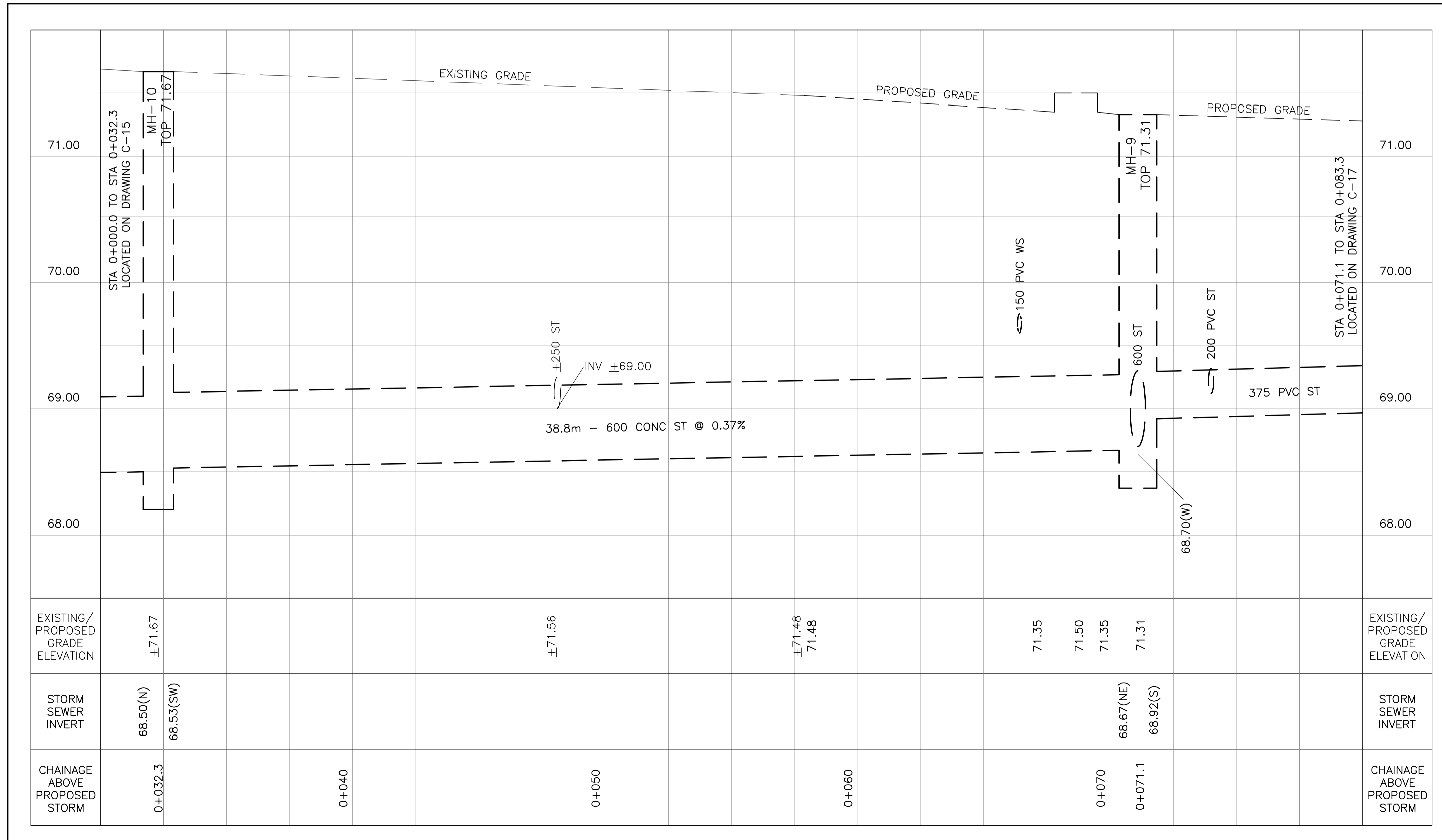
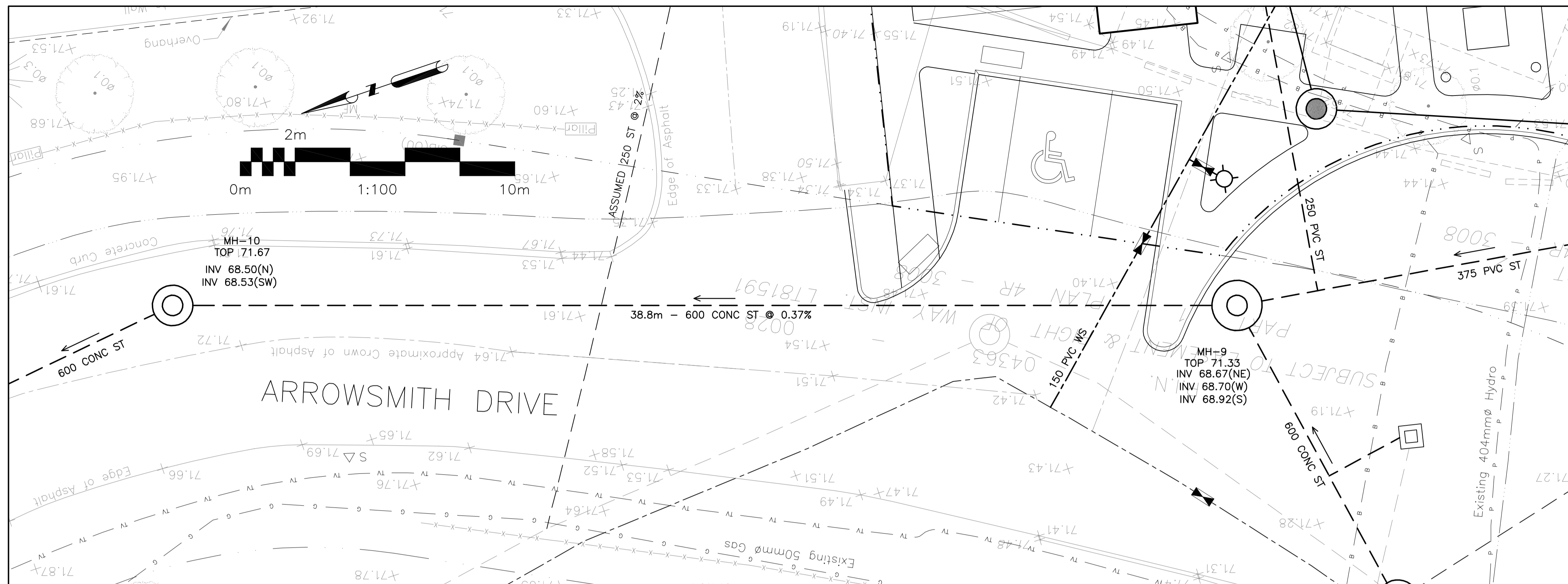


Drawn D.B.G.
 H. Scale 1:100
 V. Scale 1:20
 Date NOV 29-22
 Job No. 22062

Drawing No.
C-15
 of 17



REFER TO NOTES, & DETAILS ON DRAWINGS C-10 & C-11



LEGEND

- FFL FINISHED FLOOR ELEVATION
- TOP TOP OF FOUNDATION
- BFL BASEMENT FLOOR ELEVATION
- USF UNDERSIDE OF FOOTING
- PROPERTY LINE
- C.R.Z CRITICAL ROOT ZONE
- CB CATCH-BASIN
- MH STORM MANHOLE
- CB/MH CATCH-BASIN/MANHOLE
- MH SANITARY MANHOLE
- FH FIRE HYDRANT
- FDC FIRE DEPARTMENT CONNECTION
- VB VALVE & VALVE BOX
- M WATER METER
- R REMOTE WATER METER
- SAN SANITARY SEWER
- ST STORM SEWER
- WS/WM WATER SERVICE/WATERMAIN
- OBV OBVERT OF PIPE
- SPL SPRINGLINE OF PIPE
- INV INVERT OF PIPE
- I.O.S TOP OF SLOPE
- B.O.S BOTTOM OF SLOPE
- CENTERLINE OF SWALE
- 150mm BARRIER CURB
- DEPRESSED CURB
- ROAD CUT REINSTATEMENT

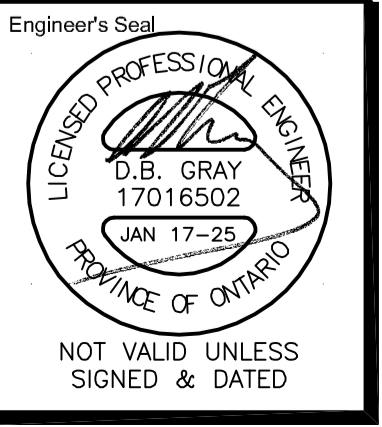


No.	DATE	REVISION
2	JAN 17-25	ISSUED FOR ZONING
1	DEC 6-24	ISSUED FOR BUILDING PERMIT

D. B. GRAY ENGINEERING INC.
 Stormwater Management - Grading & Drainage - Storm & Sanitary Sewers - Watermain
 700 Long Point Circle 613-425-8044
 Ottawa, Ontario d.gray@dbgrayengineering.com

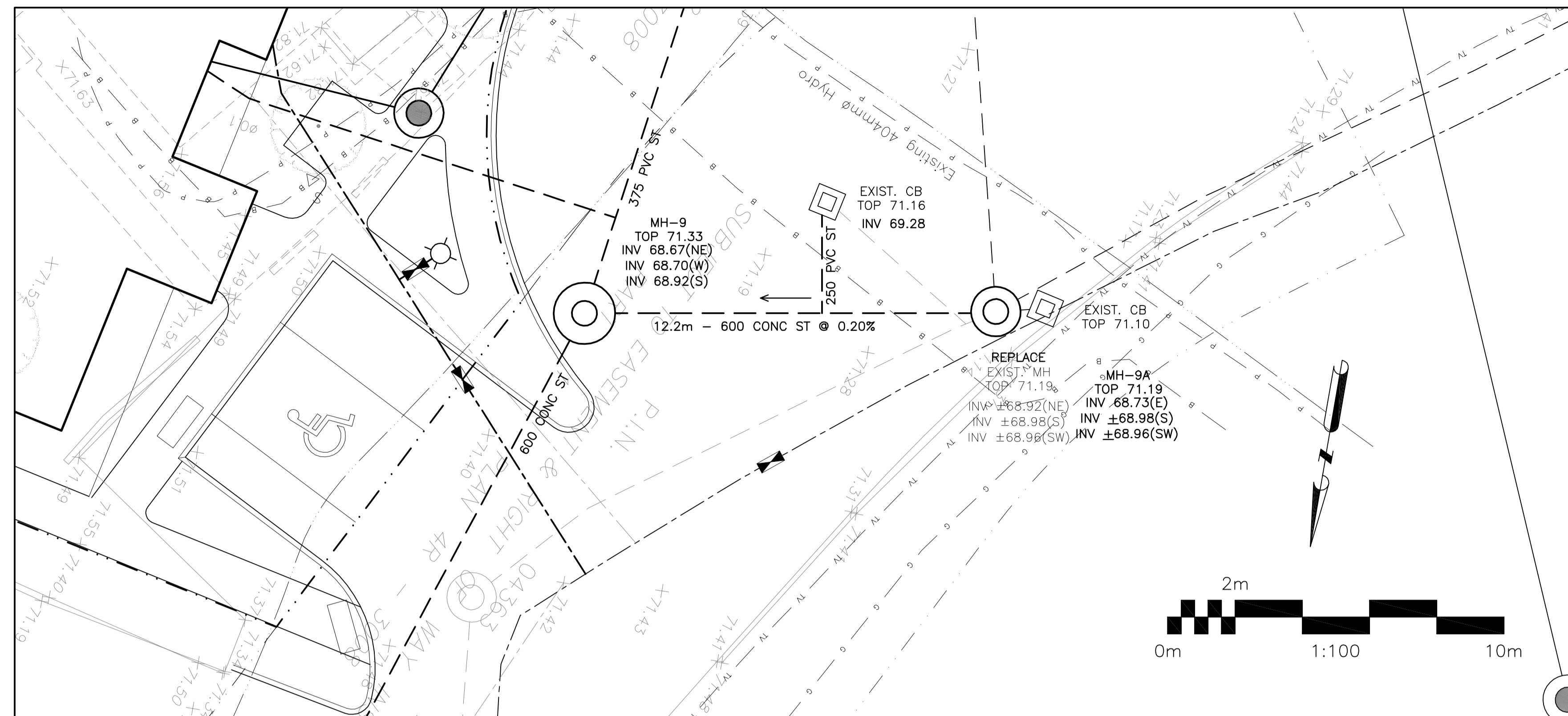
Project
PROPOSED 6-STORY MIXED-USE BUILDING
2040 ARROWSMITH DRIVE
 OTTAWA, ONTARIO

Drawing Title
PLAN AND PROFILE
 STA 0+032.3 TO 0+071.1

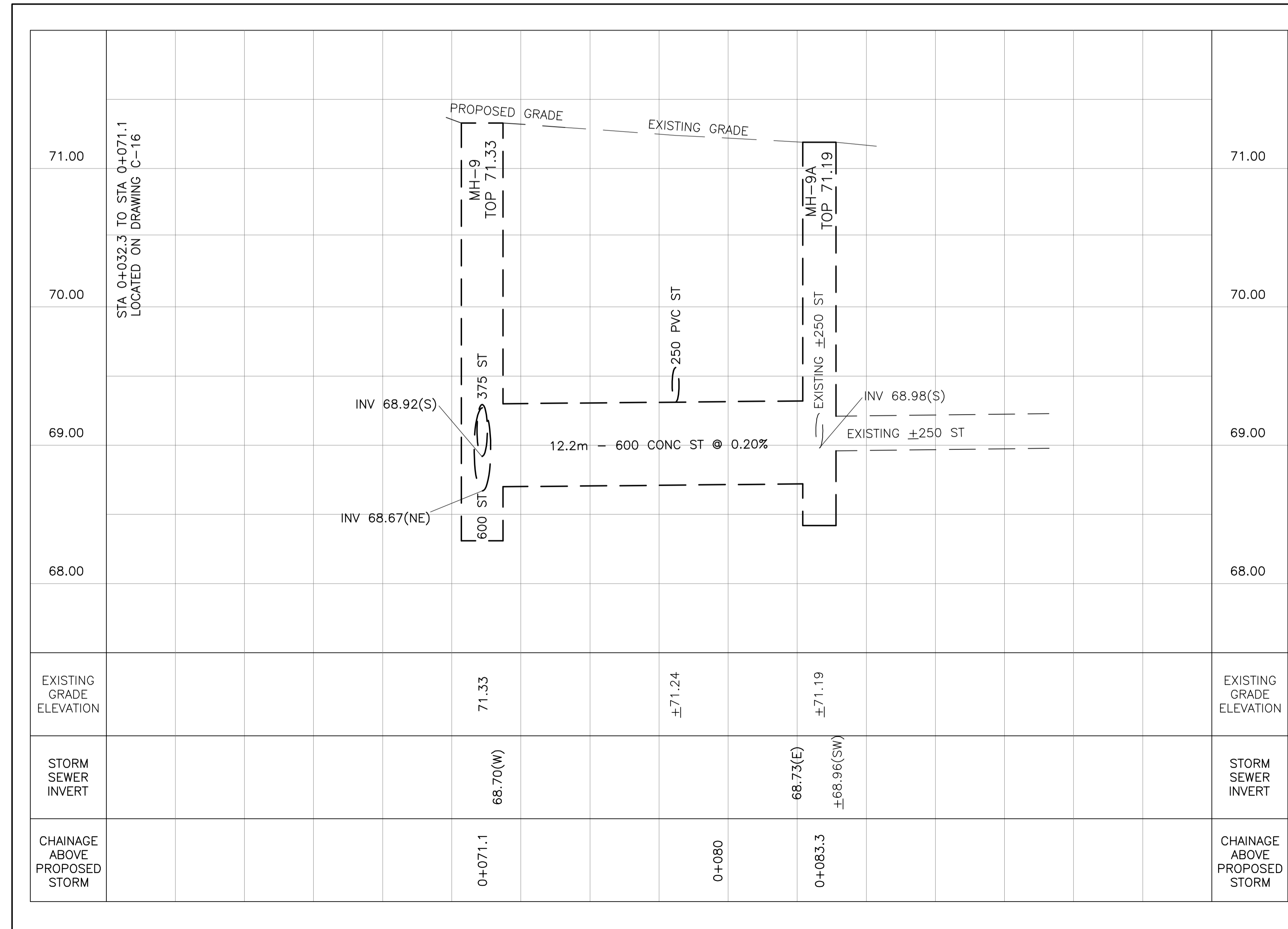
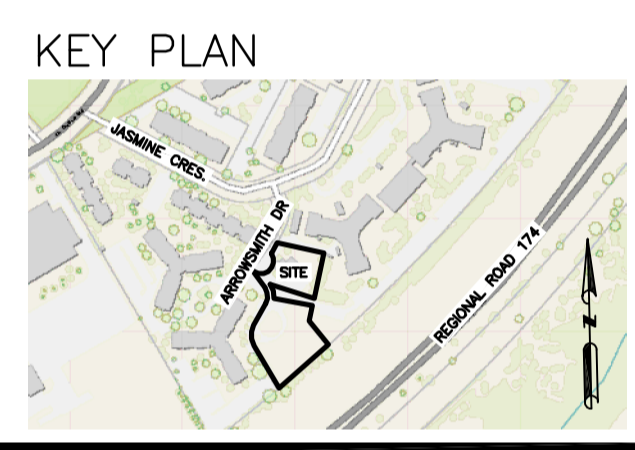


Drawn	D.B.G.
H. Scale	1:100
V. Scale	1:20
Date	NOV 29-22
Job No.	22062
Drawing No.	C-16
	of 17

REFER TO NOTES, & DETAILS ON DRAWINGS C-10 & C-11



LEGEND	
FFL	FINISHED FLOOR ELEVATION
TOF	TOP OF FOUNDATION
BFL	BASEMENT FLOOR ELEVATION
USF	UNDERSIDE OF FOOTING
- - -	PROPERTY LINE
- - - -	C.R.Z. CRITICAL ROOT ZONE
□	CATCH-BASIN
⊙	STORM MANHOLE
⊙	CATCH-BASIN/MANHOLE
⊙	SANITARY MANHOLE
⊕	FIRE HYDRANT
Y	FIRE DEPARTMENT CONNECTION
≡	VALVE & VALVE BOX
⊙	WATER METER
⊙	REMOTE WATER METER
- - -	SANITARY SEWER
- - -	STORM SEWER
- - -	WATER SERVICE/WATERMAIN
- - -	OBV. OVERT OF PIPE
- - -	SPL. SPRINGLINE OF PIPE
- - -	INV. INVERT OF PIPE
- - -	I.O.S. TOP OF SLOPE
- - -	B.O.S. BOTTOM OF SLOPE
- - -	CENTERLINE OF SWALE
- - -	150mm BARRIER CURB
- - -	D.C. DEPRESSED CURB
- - -	ROAD CUT REINSTATEMENT

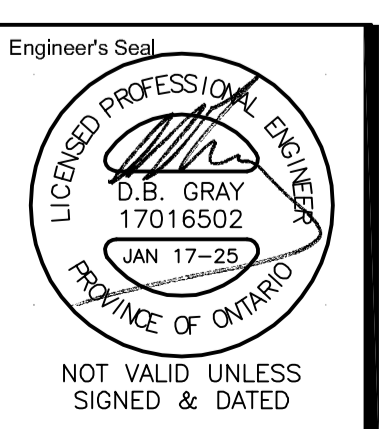


No.	DATE	REVISION
2	JAN 17-25	ISSUED FOR ZONING
1	DEC 6-24	ISSUED FOR BUILDING PERMIT

D. B. GRAY ENGINEERING INC.
 Stormwater Management - Grading & Drainage - Storm & Sanitary Sewers - Watermain
 700 Long Point Circle
 Ottawa, Ontario
 613-425-8044
 d.gray@dbgrayengineering.com

Project
PROPOSED 6-STORY MIXED-USE BUILDING
2040 ARROWSMITH DRIVE
 OTTAWA, ONTARIO

Drawing Title
PLAN AND PROFILE
 STA 0+071.1 TO 0+083.3



Drawn	D.B.G.
H. Scale	1:100
V. Scale	1:20
Date	NOV 29-22
Job No.	22062
Drawing No.	C-17
	of 17

REFER TO NOTES, & DETAILS ON DRAWINGS C-10 & C-11