

LEGEND

- FFL FINISHED FLOOR ELEVATION
- TOP TOP OF FOUNDATION
- BFL BASEMENT FLOOR ELEVATION
- USF UNDERSIDE OF FOOTING
- PROPERTY LINE
- - - C.R.Z. CRITICAL ROAD ZONE
- CB CATCH-BASIN
- MH STORM MANHOLE
- CB/MH CATCH-BASIN/MANHOLE
- MH SANITARY MANHOLE
- FH FIRE HYDRANT
- FDC FIRE DEPARTMENT CONNECTION
- VB VALVE & VALVE BOX
- M WATER METER
- R REMOTE WATER METER
- SAN SANITARY SEWER
- ST STORM SEWER
- WS/WM WATER SERVICE/WATERMAIN
- OBV OVERT OF PIPE
- SPL SPRINGLINE OF PIPE
- INV INVERT OF PIPE
- I.O.S. TOP OF SLOPE
- B.O.S. BOTTOM OF SLOPE
- CENTERLINE OF SWALE
- 150mm BARRIER CURB
- DEPRESSED CURB
- ROAD CUT REINSTATEMENT

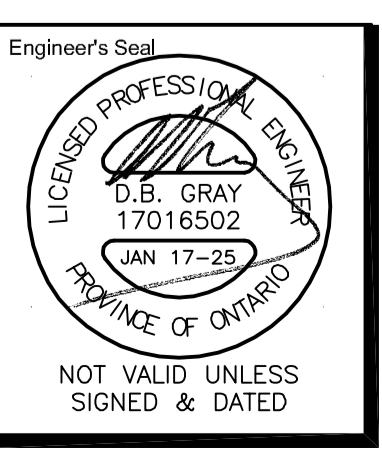


No.	DATE	REVISION
4	JAN 17-25	ISSUED FOR ZONING
3	DEC 6-24	ISSUED FOR BUILDING PERMIT
2	DEC 21-22	ISSUED FOR APPROVAL
1	DEC 19-22	ISSUED FOR COORDINATION

D. B. GRAY ENGINEERING INC.
 Stormwater Management - Grading & Drainage - Storm & Sanitary Sewers - Watermain
 700 Long Point Circle 613-425-8044
 Ottawa, Ontario d.gray@dbgrayengineering.com

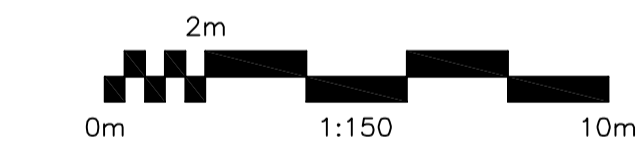
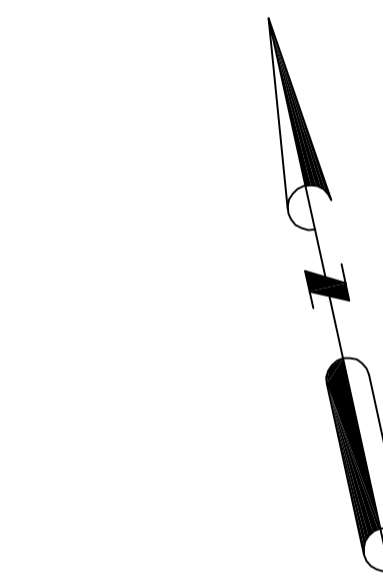
Project
PROPOSED 6-STOREY MIXED-USE BUILDING 2040 ARROWSMITH DRIVE OTTAWA, ONTARIO

Drawing Title
EXISTING CONDITIONS, REMOVALS & DECOMMISSION PLAN (NORTH)



Engineer's Seal
 Drawn D.B.G.
 H. Scale 1:150
 V. Scale
 Date NOV 29-22
 Job No. 22062
 Drawing No.
C-5
 of 17

EXIST. SAN MH
 TOP 71.58
 INV ±68.74(SE)



EXIST. CB
 TOP 71.53

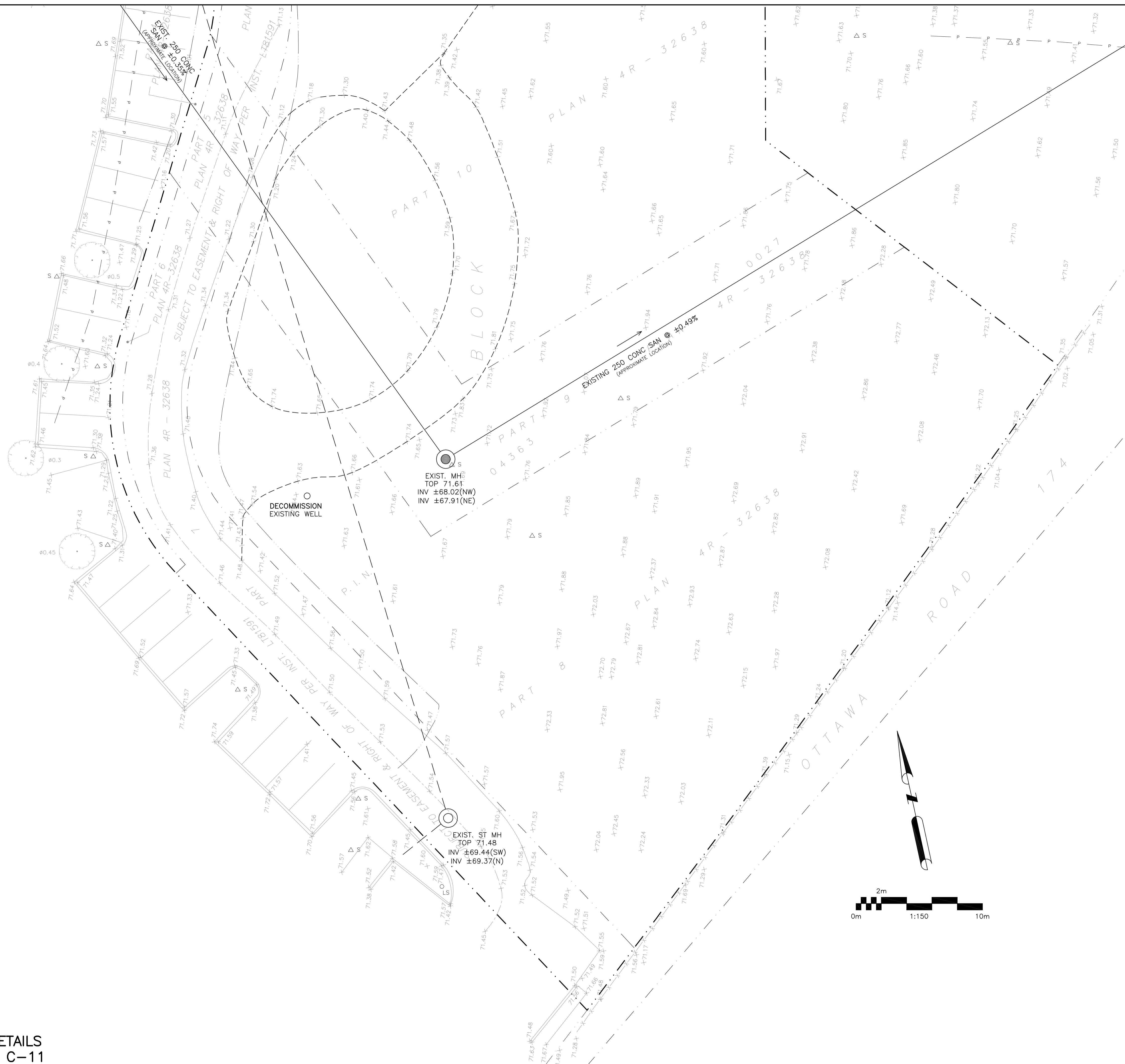
Site Benchmark
 Top of Spindle of FH
 Elevation = 72.68

EXIST. MH
 TOP 71.72
 INV ±69.31(W)
 INV ±68.24(NW)
 INV ±68.19(SE)

EXIST. CB/MH
 TOP 70.86
 INV ±69.05(N)
 INV ±69.06(S)
 INV ±69.06(W)

REFER TO NOTES, & DETAILS ON DRAWINGS C-10 & C-11

No. 2044
4-Storey Apartment Building



LEGEND

- F.F.L. FINISHED FLOOR ELEVATION
- T.O.F. TOP OF FOUNDATION
- B.F.L. BASEMENT FLOOR ELEVATION
- U.S.F. UNDERSIDE OF FOOTING
- PROPERTY LINE
- - - C.R.Z. CRITICAL ROOT ZONE
- CB CATCH-BASIN
- MH STORM MANHOLE
- CB/MH CATCH-BASIN/MANHOLE
- MH SANITARY MANHOLE
- FH FIRE HYDRANT
- FDC FIRE DEPARTMENT CONNECTION
- VB VALVE & VALVE BOX
- M WATER METER
- R REMOTE WATER METER
- SAN SANITARY SEWER
- ST STORM SEWER
- WS/W WATER SERVICE/WATERMAIN
- OBV OBVERT OF PIPE
- SPL SPRINGLINE OF PIPE
- INV INVERT OF PIPE
- I.O.S. TOP OF SLOPE
- B.O.S. BOTTOM OF SLOPE
- CENTERLINE OF SWALE
- 150mm BARRIER CURB
- D.C. DEPRESSED CURB
- ROAD CUT REINSTATEMENT

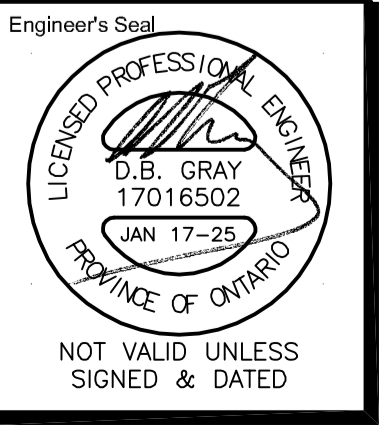


No.	DATE	REVISION
4	JAN 17-25	ISSUED FOR ZONING
3	DEC 6-24	ISSUED FOR BUILDING PERMIT
2	DEC 21-22	ISSUED FOR APPROVAL
1	DEC 19-22	ISSUED FOR COORDINATION

D. B. GRAY ENGINEERING INC.
Stormwater Management - Grading & Drainage - Storm & Sanitary Sewers - Watermain
 700 Long Point Circle 613-425-8044
 Ottawa, Ontario d.gray@dbgrayengineering.com

Project
PROPOSED 6-STORY MIXED-USE BUILDING
2040 ARROWSMITH DRIVE
 OTTAWA, ONTARIO

Drawing Title
EXISTING CONDITIONS, REMOVALS & DECOMMISSION PLAN (SOUTH)



Engineer's Seal	Drawn D.B.G.
	H. Scale 1:150
	V. Scale
	Date NOV 29-22
	Job No. 22062
Drawing No.	C-6
	of 17

REFER TO NOTES, & DETAILS ON DRAWINGS C-10 & C-11