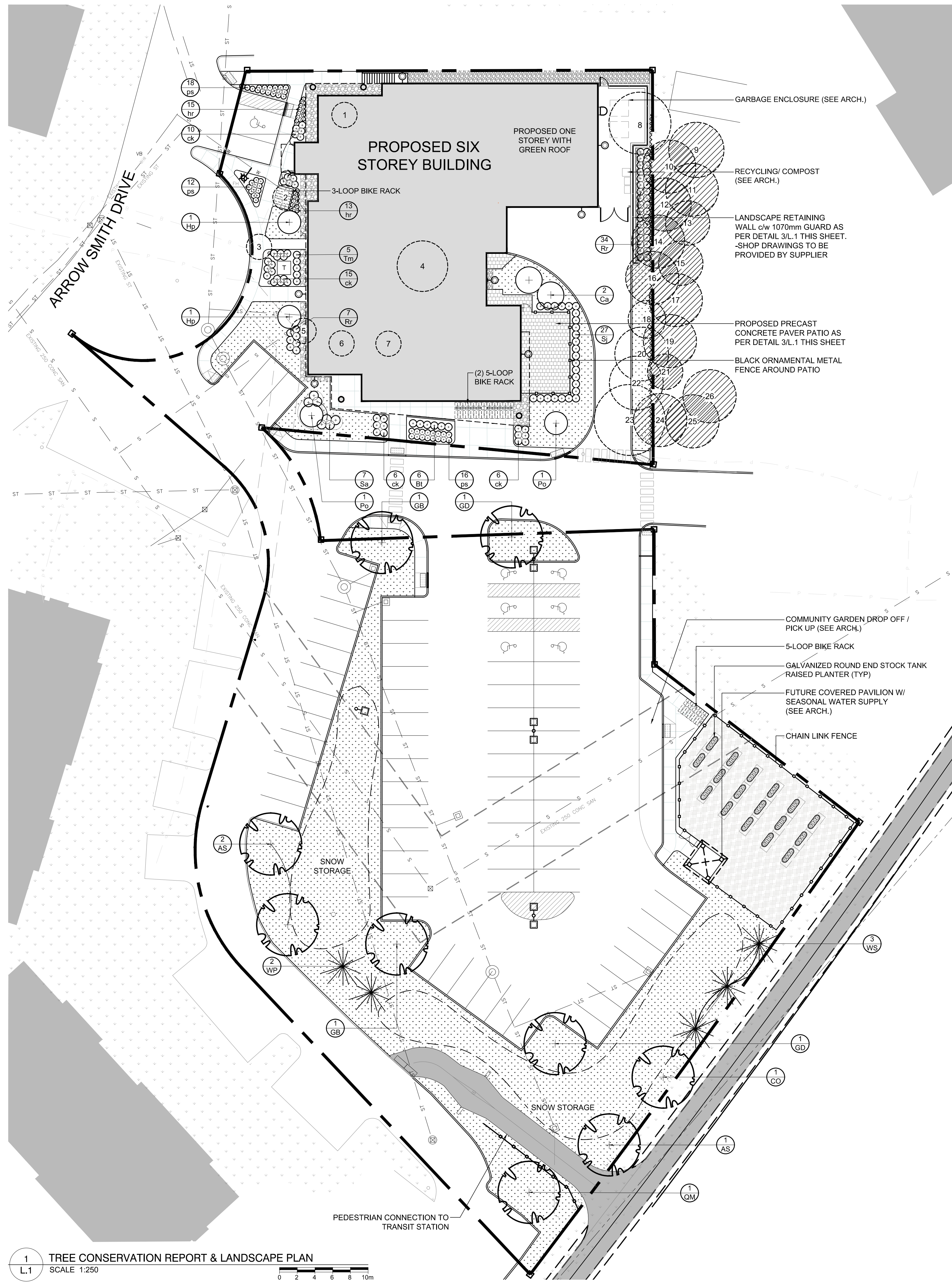
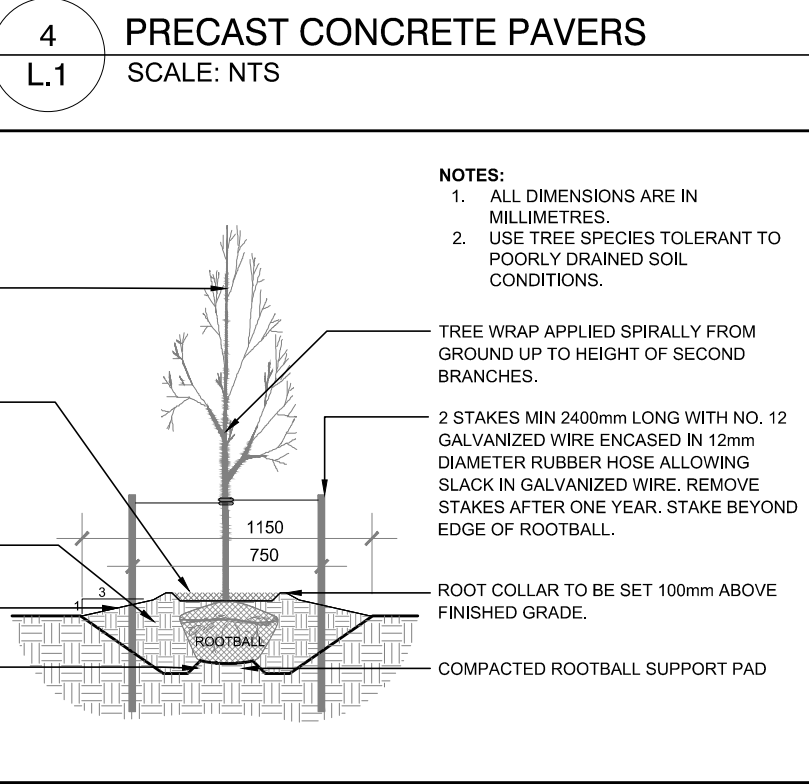
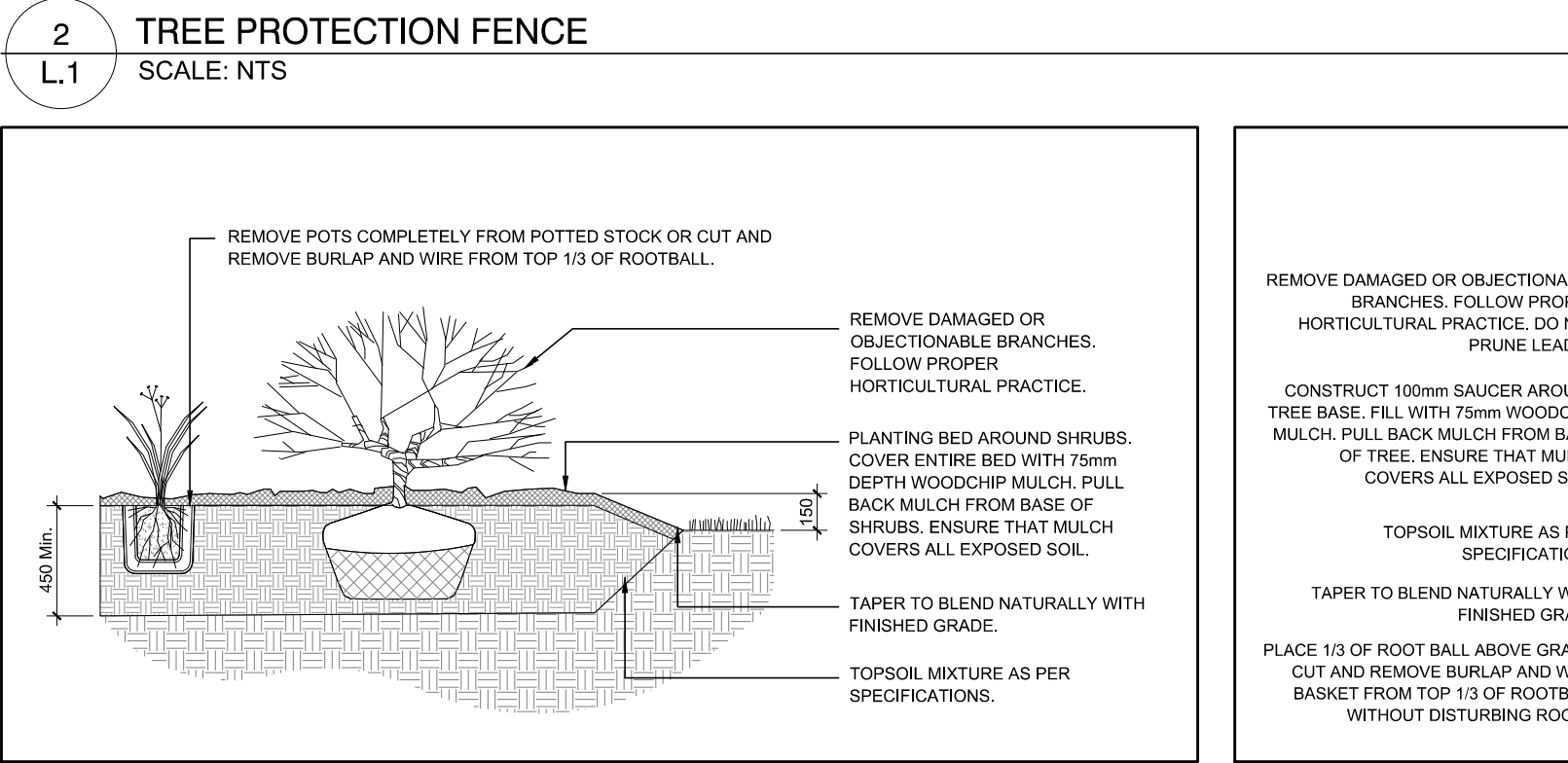
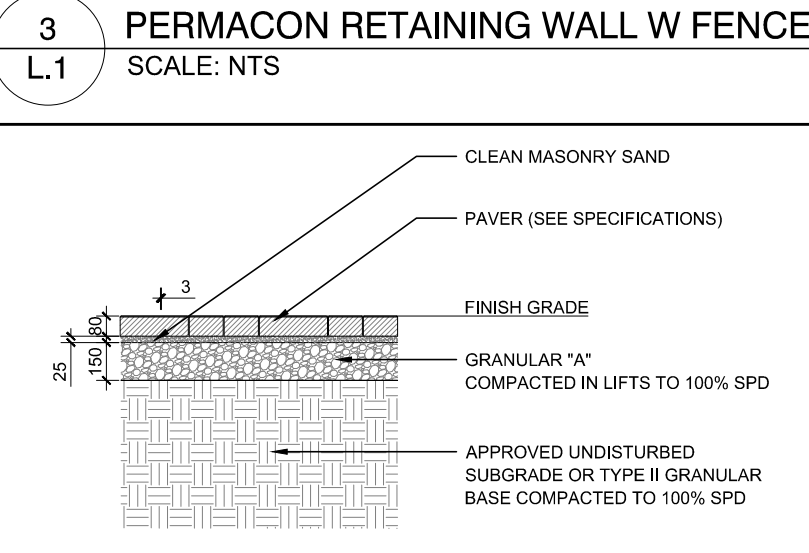
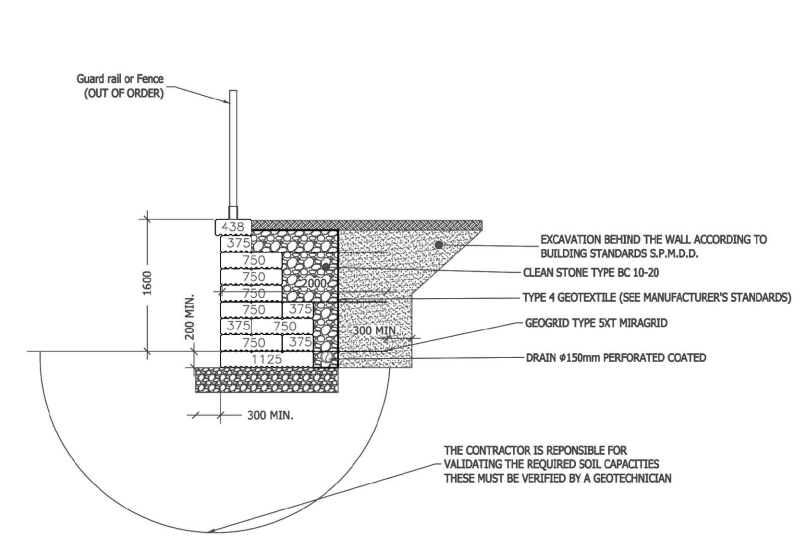
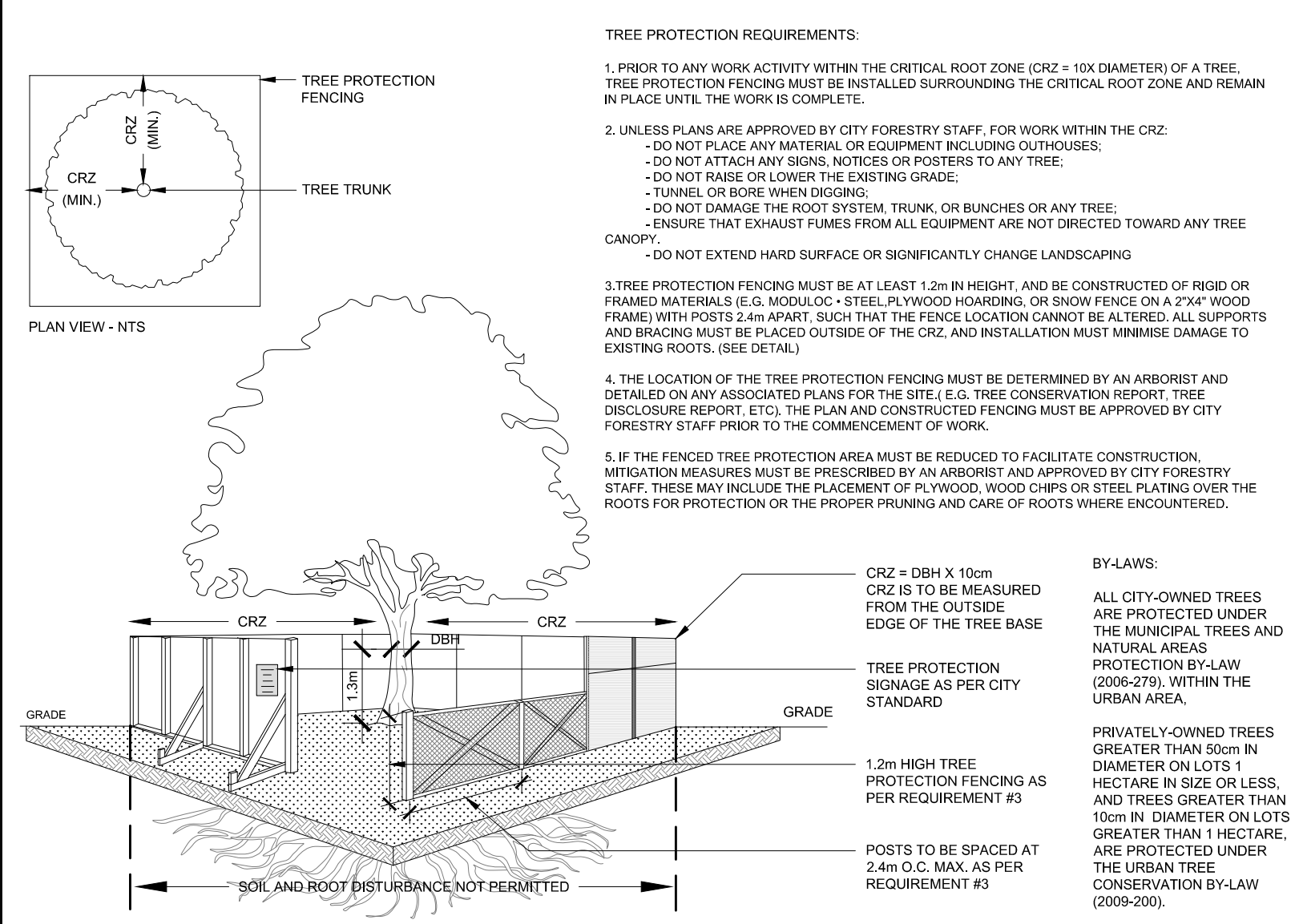


KEY	QTY	BOTANICAL NAME	COMMON NAME	SIZE	CONDITION	REMARKS	OWNERSHIP
<b>EXISTING TREE LIST</b>							
<b>DECIDUOUS TREES</b>							
1	1	<i>Prunus domestica</i>	Plum Tree	175mm dia.	Good	To Be Removed	2040 Arrowsmith Dr.
2	1	<i>Syringa reticulata</i>	Japanese Tree Lilac	200mm dia.	Good	To Be Removed	2040 Arrowsmith Dr.
3	1	<i>Syringa reticulata</i>	Japanese Tree Lilac	200mm dia.	Good	To Be Removed	2040 Arrowsmith Dr.
4	1	<i>Gleditsia triacanthos</i>	Honey Locust	400mm dia.	Good	To Be Removed	2040 Arrowsmith Dr.
5	1	<i>Malus sp.</i>	Crabapple	250mm dia.	Good	To Be Removed	2040 Arrowsmith Dr.
6	1	<i>Malus sp.</i>	Crabapple	250mm dia.	Good	To Be Removed	2040 Arrowsmith Dr.
7	1	<i>Malus sp.</i>	Crabapple	250mm dia.	Good	To Be Removed	2040 Arrowsmith Dr.
8	1	<i>Picea pungens</i>	Colorado Spruce	300mm dia.	Good	To Remain	2040 Arrowsmith Dr.
9	1	<i>Picea pungens</i>	Colorado Spruce	300mm dia.	Good	To Remain	2000 Jasmine Crescent
10	1	<i>Picea pungens</i>	Colorado Spruce	300mm dia.	Good	To Remain	2000 Jasmine Crescent
11	1	<i>Picea pungens</i>	Colorado Spruce	300mm dia.	Good	To Remain	2000 Jasmine Crescent
12	1	<i>Picea pungens</i>	Colorado Spruce	300mm dia.	Good	To Remain	2000 Jasmine Crescent
13	1	<i>Picea pungens</i>	Colorado Spruce	250mm dia.	Good	To Remain	2000 Jasmine Crescent
14	1	<i>Picea pungens</i>	Colorado Spruce	300mm dia.	Good	To Remain	2040 Arrowsmith Dr. & 2000 Jasmine Cr.
15	1	<i>Picea pungens</i>	Colorado Spruce	250mm dia.	Good	To Remain	2000 Jasmine Crescent
16	1	<i>Picea pungens</i>	Colorado Spruce	300mm dia.	Good	To Remain	2040 Arrowsmith Dr. & 2000 Jasmine Cr.
17	1	<i>Picea pungens</i>	Colorado Spruce	300mm dia.	Good	To Remain	2000 Jasmine Crescent
18	1	<i>Picea pungens</i>	Colorado Spruce	200mm dia.	Good	To Be Removed	2040 Arrowsmith Dr. & 2000 Jasmine Cr.
19	1	<i>Picea pungens</i>	Colorado Spruce	300mm dia.	Good	To Remain	2000 Jasmine Crescent
20	1	<i>Picea pungens</i>	Colorado Spruce	300mm dia.	Good	To Be Removed	2040 Arrowsmith Dr.
21	1	<i>Picea pungens</i>	Colorado Spruce	200mm dia.	Good	To Remain	2000 Jasmine Crescent
22	1	<i>Picea pungens</i>	Colorado Spruce	300mm dia.	Good	To Be Removed	2040 Arrowsmith Dr.
23	1	<i>Picea pungens</i>	Colorado Spruce	400mm dia.	Good	To Be Removed	2040 Arrowsmith Dr.
24	1	<i>Picea pungens</i>	Colorado Spruce	300mm dia.	Good	To Remain	Jointly owned by 2040 Arrowsmith Dr. & 2000 Jasmine Cr.
25	1	<i>Picea pungens</i>	Colorado Spruce	300mm dia.	Good	To Remain	2000 Jasmine Crescent
26	1	<i>Picea pungens</i>	Colorado Spruce	300mm dia.	Good	To Remain	2000 Jasmine Crescent

KEY	QTY	BOTANICAL NAME	COMMON NAME	SIZE	CONDITION	NOTES
<b>PROPOSED PLANT LIST</b>						
<b>TREES</b>						
AS	3	<i>Acer saccharum</i>	Sugar Maple	60mm cal.	B&B	
CO	1	<i>Celtis occidentalis</i>	Hackberry	60mm cal.	B&B	
GB	2	<i>Ginkgo biloba</i>	Maidenhair Tree	60mm cal.	B&B	Male
GD	2	<i>Gleditsia triacanthos</i> var <i>inermis</i> 'Draves'	Streetkeeper Honeylocust	60mm cal.	B&B	
QM	1	<i>Quercus macrocarpa</i>	Bur Oak	60mm cal.	B&B	
WP	2	<i>Pinus strobus</i>	White Pine	1800mm ht.	B&B	
WS	3	<i>Picea glauca</i>	White Spruce	1800mm ht.	B&B	
PP	14	<i>Picea pungens</i>	Colorado Spruce	1800mm ht.	B&B	
<b>SHRUBS</b>						
BI	6	<i>Berberis thunbergii</i> 'Concorde'	Concorde Barberry	300mm ht.	Potted	Space 800 mm o.c.
Ca	2	<i>Cornus alternifolia</i>	Pagoda dogwood	2000mm ht.	Stringball	
Hp	2	<i>Hydrangea paniculata</i> 'Peenpee'	Peenpee Hydrangea	1200mm ht.	Potted	
Po	2	<i>Physocarpus 'Diablo'</i>	Diablo Ninebark	800mm ht.	Potted	
Rr	43	<i>Rosa rugosa</i>	Rugosa Rose	800mm ht.	Potted	Space 800 mm o.c.
Sa	7	<i>Spiraea x arguta</i>	Garland Spirea	800mm spr.	Potted	Space 1000 mm o.c.
Sj	27	<i>Spiraea japonica</i> 'Goldmound'	Goldmound Spirea	500 mm ht.	Potted	Space 800 mm o.c.
Tm	5	<i>Taxus x media</i> 'Densiformis'	Dense Spreading Yew	500mm spr.	Potted	Space 800 mm o.c.
<b>PERENNIALS/ GRASSES</b>						
ck	37	<i>Calamagrostis</i> 'Karl Foerster'	Karl Foerster Grass	250mm pot	Potted	Space 800 mm o.c.
hr	26	<i>Hemerocallis</i> 'Ruby Stella'	Ruby Stella Daylily	150mm pot	Potted	Space 300 mm o.c.
ps	46	<i>Phalaris arundinacea</i> 'Strawberries & Cream'	Strawberries & Cream Ribbon Grass	250mm pot	Potted	Space 600 mm o.c.

**GENERAL NOTES:**

- IT IS THE RESPONSIBILITY OF THE APPROPRIATE CONTRACTOR OR OFFICIAL TO REPORT ANY ERRORS, OMISSIONS OR DISCREPANCIES ON THIS PLAN WITH ACTUAL SITE CONDITIONS TO THE LANDSCAPE ARCHITECT BEFORE PROCEEDING WITH CONSTRUCTION.
- THE CONTRACTOR IS TO NOTIFY ALL UTILITY COMPANIES AND AUTHORITIES PRIOR TO ANY EXCAVATION AND ASCERTAIN LOCATIONS OF UNDERGROUND SERVICES.
- THE CONTRACTOR IS TO REINSTATE ALL AREAS AND ITEMS DAMAGED AS A RESULT OF CONSTRUCTION ACTIVITY.
- THE CONTRACTOR IS TO COMPLY WITH ALL PERTINENT CODES AND BY-LAWS.
- THE CONTRACTOR IS TO MAINTAIN A POSITIVE SURFACE RUN-OFF THROUGHOUT THE ENTIRE CONSTRUCTION PERIOD.
- THE LANDSCAPE ARCHITECT IS NOT RESPONSIBLE FOR SUBSURFACE CONDITIONS.
- THE CONTRACTOR IS TO IDENTIFY ALL EXISTING TREES TO REMAIN ON SITE WITH THE LANDSCAPE ARCHITECT PRIOR TO CONSTRUCTION.
- THE CONTRACTOR IS TO STAKE THE PROPOSED LOCATION OF ALL PLANT MATERIAL IN CONJUNCTION WITH THE LANDSCAPE ARCHITECT PRIOR TO EXCAVATION.
- MINIMUM DISTANCES FOR SELECTED DECIDUOUS TREES ARE AS FOLLOWS:
  - BUILDING FOUNDATIONS - 7.5M
  - SIDEWALKS - 1.5M
  - PUBLIC STREETS - 2.5M
  - UNDERGROUND INFRASTRUCTURE - 2.0M
- ALL TREES WITHIN 1M OF UNDERGROUND UTILITY TRENCHES ARE TO BE EXCAVATED BY HAND.
- REMOVE ALL PROTECTIVE WRAPPING FROM TREE TRUNKS AFTER INSTALLATION.
- STAKING OF TREES SHALL ONLY BE PERFORMED IF NECESSARY.
- ENSURE THAT MULCH IS PULLED BACK A MINIMUM DISTANCE OF 75MM FROM BASE OF TREE TRUNK.



**CLIENT**  
Vandenberg & Wildeboer  
ARCHITECTS  
www.vandenberg-wildeboer.com Telephone: 613.287.5166 Fax: 613.271.8689  
7100 OLD STONE LANE - 100 RIVERDALE RD - OTTAWA, ONTARIO K2H 1S8

**CONSULTANTS**  
SURVEYORS: FARLEY, SMITH & DENNIS SURVEYING LTD.  
2750 Colborne Road  
Ottawa, ON K2E 7J6  
P: (613) 735-0200  
E: fsurvey@fdsl.ca

MECHANICAL/ELECTRICAL ENGINEERS: Smith + Andersen  
1600 Carling Ave #501  
Ottawa, ON K2H 1J3  
P: (613) 981-0068  
E: Mike.Lee@smithandanderson.com

CIVIL ENGINEERS: D.B. GRAY ENGINEERING INC.  
1052 Kavan Dr.  
Ottawa, ON K1C 4K1  
P: (613) 735-0200  
E: dgray@dbgrayengineering.com

**LEGEND**

- PROPOSED CONCRETE WALKWAY (BY OTHERS)
- PROPOSED PRECAST CONCRETE PAVER PATIO: Tecco Bloc Blu 80 Smooth, Linear, Greyed Nickel
- PROPOSED PEASTONE
- EXISTING GRASS
- PROPOSED SOD
- PROPOSED RIVERSTONE
- PROPOSED RAISED PLANTER
- PROPOSED PERENNIALS & SHRUBS
- EXISTING TREE TO BE REMOVED
- EXISTING TREE TO REMAIN
- PROPOSED TREE
- LIGHT STANDARD (SEE ELECTRICAL)
- H HYDRO LINE (SEE ELECTRICAL)
- STM STORM SEWER (SEE CIVIL)
- SAN SANITARY SEWER (SEE CIVIL)
- W WATER LINE (SEE CIVIL)
- PROPOSED TREE PROTECTION FENCE

No.	Issue	Date	DR	CK
14	ISSUED FOR ZBA RESUBMISSION	01/17/2025	WF	JL
13	ISSUED FOR DISCUSSION AND REVIEW	09/03/2024	WF	JL
12	REVISED FOR SITE PLAN APPLICATION	08/01/2024	WF	JL
11	ISSUED FOR COORDINATION	05/25/2024	WF	JL
10	ISSUED FOR COORDINATION	03/21/2024	WF	JL

**JAMES B. LENNOX & ASSOCIATES INC.**  
LANDSCAPE ARCHITECTS  
3332 CARLING AVE. OTTAWA, ONTARIO K2H 5A8  
Tel. (613) 722-5168 Fax. (866) 343-3942

**PROJECT**  
WIGWAMEN  
2040 ARROWSMITH DRIVE  
GLOUCESTER, ON K1J 8V9

**DRAWING**  
TREE CONSERVATION REPORT & LANDSCAPE PLAN

**STAMP**  
JAMES B. LENNOX & ASSOCIATES INC. LANDSCAPE ARCHITECTS  
MEMBER OF THE ASSOCIATION OF LANDSCAPE ARCHITECTS OF ONTARIO

**SCALE**  
AS SHOWN

**START DATE**  
NOVEMBER 2022

**PROJECT NO.**  
23VAN2312

**DRAWING NO.**  
L.1

**PLOT SIZE** ARCH-D