

LEGEND

FFL	FINISHED FLOOR ELEVATION
TOF	TOP OF FOUNDATION
BFL	BASEMENT FLOOR ELEVATION
USF	UNDERSIDE OF FOOTING
- - - - -	PROPERTY LINE
- - - - -	CRITICAL ROOT ZONE
CB	CATCH-BASIN
MH	STORM MANHOLE
CB/MH	CATCH-BASIN/MANHOLE
MH	SANITARY MANHOLE
FH	FIRE HYDRANT
FDC	FIRE DEPARTMENT CONNECTION
+99.99	EXISTING GRADE ELEVATION
+99.99	PROPOSED GRADE ELEVATION
2%	EXISTING SLOPE OF GRADE
2%	PROPOSED SLOPE OF GRADE
→	EMERGENCY OVERLAND FLOW
T.O.S.	TOP OF SLOPE
B.O.S.	BOTTOM OF SLOPE
- - - - -	CENTERLINE OF SWALE
---	150mm BARRIER CURB
---	DEPRESSED CURB
▨	LIGHT-DUTY PAVEMENT
▩	HEAVY-DUTY PAVEMENT
▧	CONCRETE
⋯	LANDSCAPE

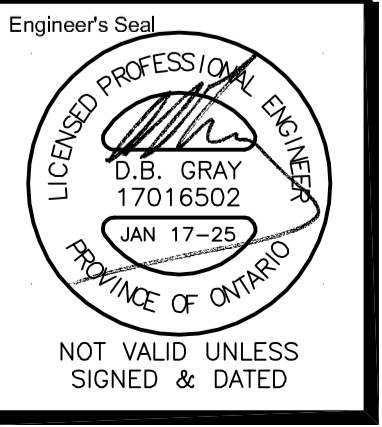


No.	DATE	REVISION
4	JAN 17-25	ISSUED FOR ZONING
3	DEC 6-24	ISSUED FOR BUILDING PERMIT
2	DEC 21-22	ISSUED FOR APPROVAL
1	DEC 19-22	ISSUED FOR COORDINATION

D. B. GRAY ENGINEERING INC.
 Stormwater Management - Grading & Drainage - Storm & Sanitary Sewers - Watermain
 700 Long Point Circle 613-425-8044
 Ottawa, Ontario d.gray@dbgrayengineering.com

Project
PROPOSED 6-STORY MIXED-USE BUILDING
2040 ARROWSMITH DRIVE
 OTTAWA, ONTARIO

Drawing Title
GRADING PLAN
 (DETAIL)



Drawn	D.B.G.
H. Scale	1:75
V. Scale	
Date	NOV 29-22
Job No.	22062
Drawing No.	C-9
	of 17

REFER TO NOTES, & DETAILS ON DRAWINGS C-10 & C-11