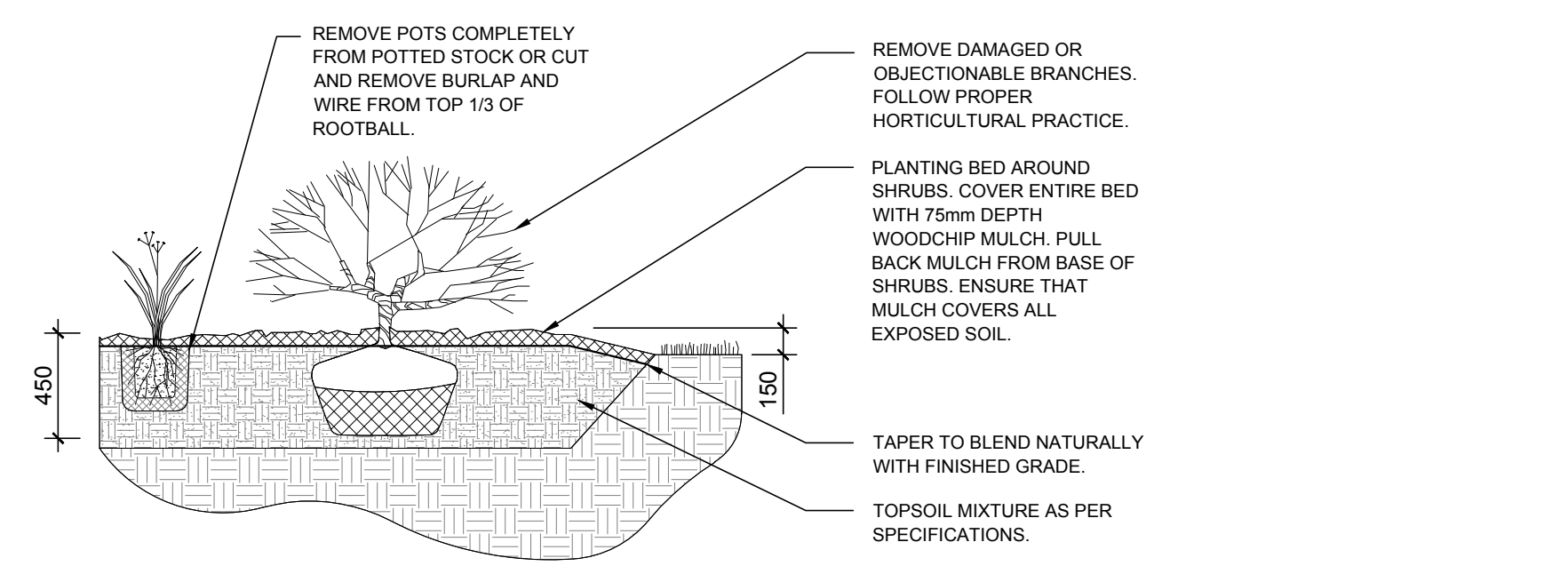
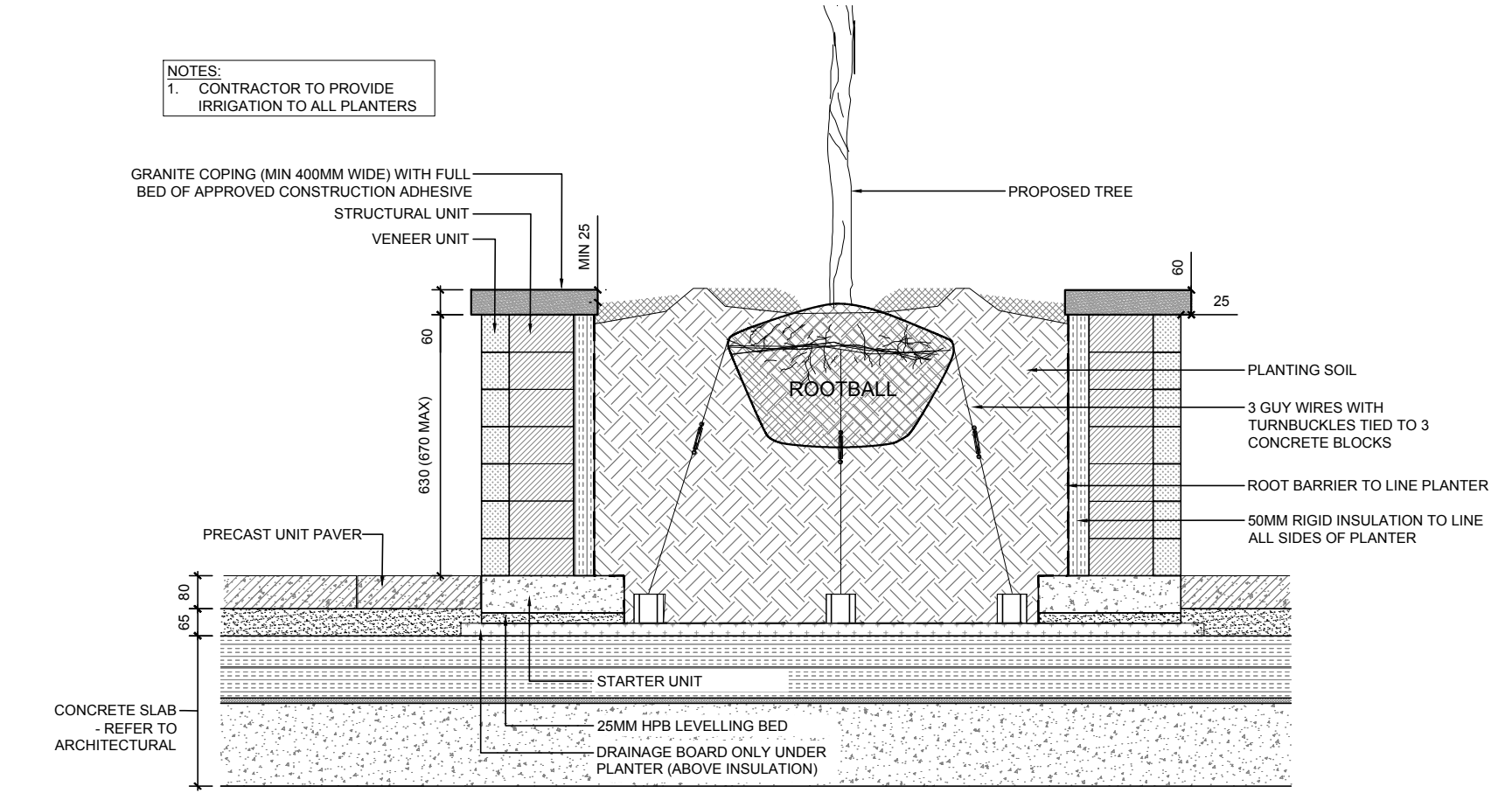


EXISTING TREE LIST							
KEY	QTY	BOTANICAL NAME	COMMON NAME	SIZE	CONDITION	REMARKS	OWNERSHIP
TREES							
AN	5	Acer negundo	Manitoba Maple	150-600mm DBH	FAIR-GOOD	See plan	112-134 Nelson Street
AN1	8	Acer negundo	Manitoba Maple	100-400mm DBH	FAIR-GOOD	See plan	Joint with 140 Nelson Street
GT	1	Gleditsia triacanthos	Honey Locust	350mm DBH	GOOD	To remain	City of Ottawa
PN	5	Pinus nigra	Austrian Pine	200-400mm DBH	FAIR-GOOD	To remain	110 Nelson Street
UP	12	Ulmus pumila	Siberian Elm	100-250mm DBH	DEAD-GOOD	See plan	112-134 Nelson Street
UP1	3	Ulmus pumila	Siberian Elm	100mm DBH	GOOD	To remain	140 Nelson Street
SI	1	Acer saccharinum	Silver Maple	710mm DBH	FAIR	To remain	City of Ottawa

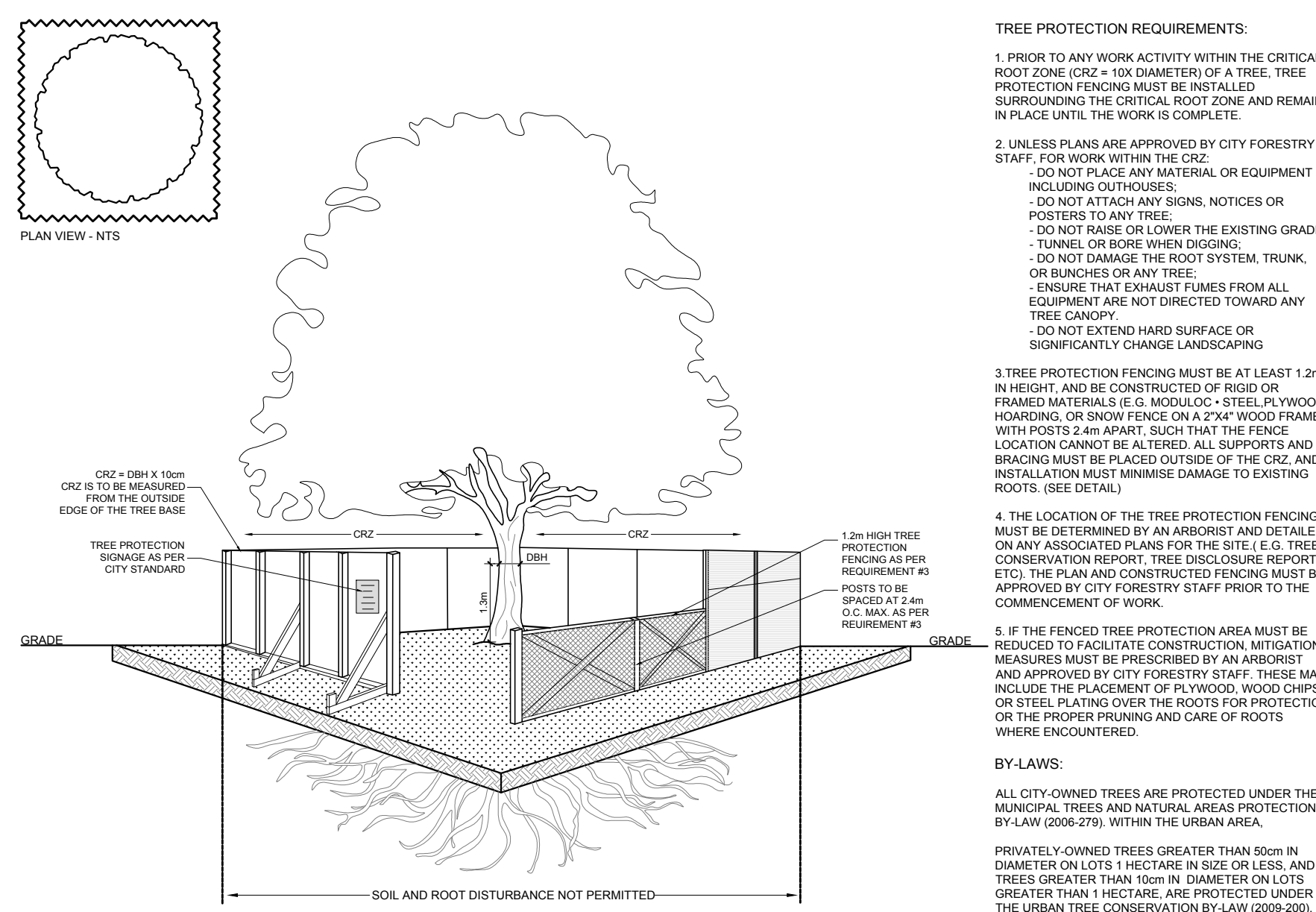
PROPOSED PLANT LIST						
KEY	QTY	BOTANICAL NAME	COMMON NAME	SIZE	CONDITION	REMARKS
TREES						
HA	5	Crataegus crus-galli var. nemris	Thornless Cockspur Hawthorn	50mm cal.	B&B	Single Leader
JL	2	Syringa reticulata	Japanese Tree Lilac	50mm cal.	B&B	Single Leader
SHRUBS						
RR	28	Rosa rugosa	Rugosa Rose	800mm ht.	Potted	800 mm o.c.
PERENNIALS AND ORNAMENTAL GRASSES						
DL	108	Hemerocallis 'Stella D'Oro'	Stella D'Oro Daylily	100mm pot	Potted	300 mm o.c.
HM	9	Panicum virgatum 'Heavy Metal'	Heavy Metal Switch Grass	250mm pot	Potted	600 mm o.c.
PD	72	Hemerocallis 'Purple D'Oro'	Purple D'Oro Daylily	100mm pot	Potted	300 mm o.c.



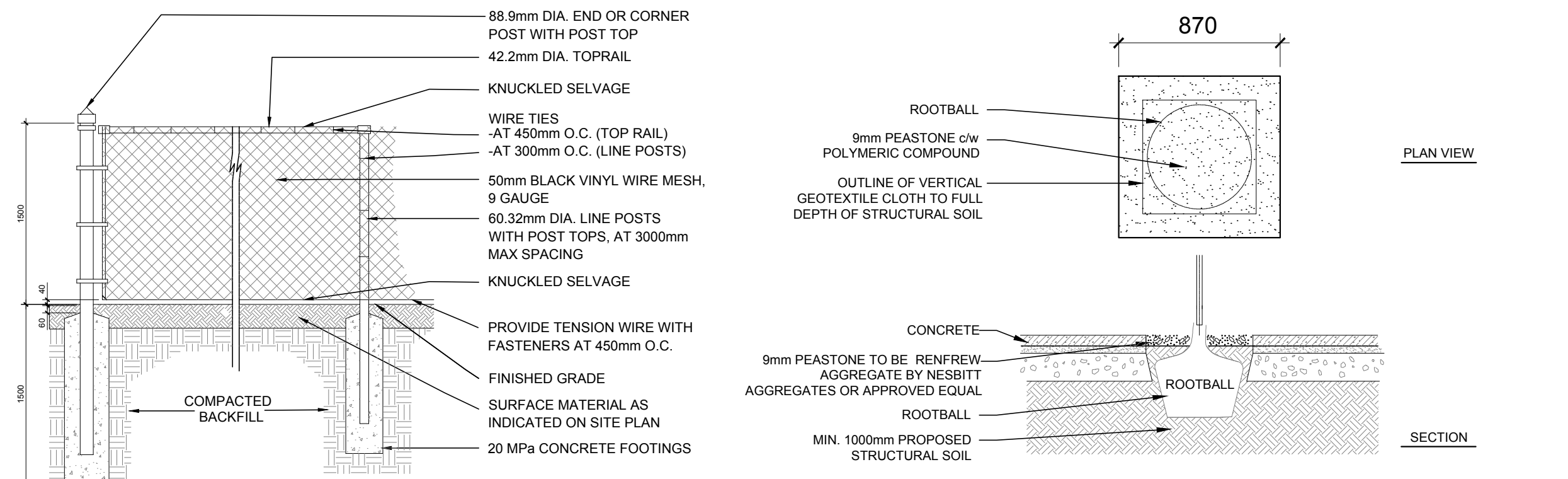
2 L.1 SHRUB AND ORNAMENTAL GRASS PLANTING SCALE: NTS



3 L.1 PRECAST CONCRETE PLANTER ON CONCRETE SLAB SCALE: NTS

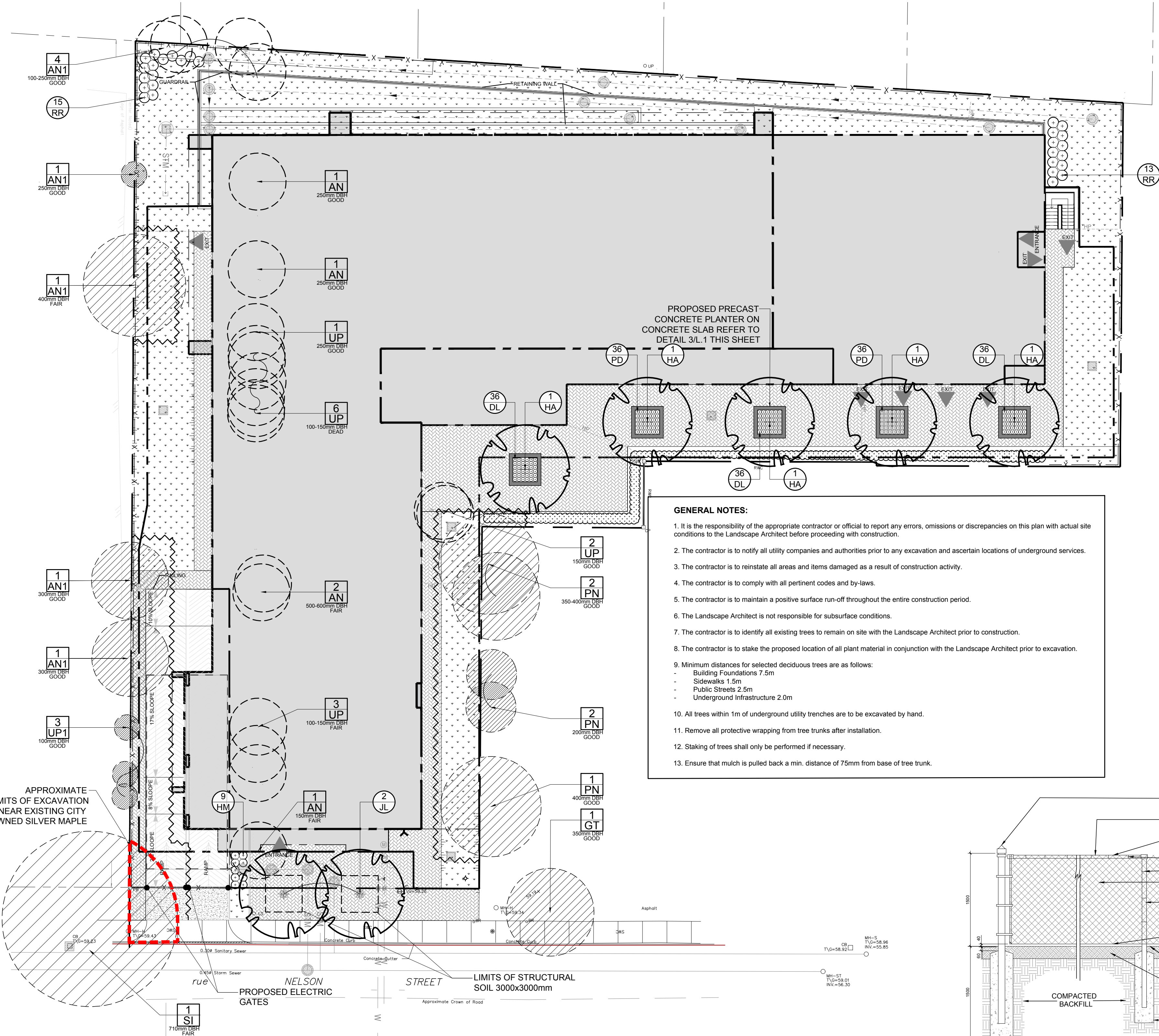


4 L.1 TREE PROTECTION FENCE SCALE: NTS



5 L.1 1500mm ht. BLACK VINYL CHAIN LINK FENCE SCALE: NTS

6 L.1 DECIDUOUS TREE PLANTING IN STRUCTURAL SOIL SCALE: NTS



GENERAL NOTES:

- It is the responsibility of the appropriate contractor or official to report any errors, omissions or discrepancies on this plan with actual site conditions to the Landscape Architect before proceeding with construction.
- The contractor is to notify all utility companies and authorities prior to any excavation and ascertain locations of underground services.
- The contractor is to reinstate all areas and items damaged as a result of construction activity.
- The contractor is to comply with all pertinent codes and by-laws.
- The contractor is to maintain a positive surface run-off throughout the entire construction period.
- The Landscape Architect is not responsible for subsurface conditions.
- The contractor is to identify all existing trees to remain on site with the Landscape Architect prior to construction.
- The contractor is to stake the proposed location of all plant material in conjunction with the Landscape Architect prior to excavation.
- Minimum distances for selected deciduous trees are as follows:
 - Building Foundations 7.5m
 - Sidewalks 1.5m
 - Public Streets 2.6m
 - Underground Infrastructure 2.0m
- All trees within 1m of underground utility trenches are to be excavated by hand.
- Remove all protective wrapping from tree trunks after installation.
- Staking of trees shall only be performed if necessary.
- Ensure that mulch is pulled back a min. distance of 75mm from base of tree trunk.

TREE PROTECTION REQUIREMENTS:

- PRIOR TO ANY WORK ACTIVITY WITHIN THE CRITICAL ROOT ZONE (CRZ) OF A TREE, TREE PROTECTION FENCING MUST BE INSTALLED SURROUNDING THE CRITICAL ROOT ZONE AND REMAIN IN PLACE UNTIL THE WORK IS COMPLETE.
- UNLESS PLANS ARE APPROVED BY CITY FORESTRY STAFF, FOR WORK WITHIN THE CRZ, DO NOT PLACE ANY MATERIAL OR EQUIPMENT INCLUDING OUTHOUSES, DO NOT RAISE OR LOWER THE EXISTING GRADE, DO NOT DAMAGE THE ROOT SYSTEM, TRUNK, OR BUNCHES OR ANY TREE, DO NOT TUNNEL OR BORE WHEN DIGGING, DO NOT EXHAUST FUMES FROM ALL EQUIPMENT ARE NOT DIRECTED TOWARDS ANY TREE CANOPY, DO NOT EXTEND HARD SURFACE OR SIGNIFICANTLY CHANGE LANDSCAPING.
- TREE PROTECTION FENCING MUST BE AT LEAST 1.2m IN HEIGHT, AND BE CONSTRUCTED OF RIGID OR FRAMED MATERIALS (E.G. MODULE-CO-STEEL, PLYWOOD HOARDING, OR SNOW FENCE ON A 2"x4" WOOD FRAME) WITH POSTS 2.4m APART, SUCH THAT THE FENCE LOCATION CANNOT BE ALTERED. ALL SUPPORTS AND BRACING MUST BE PLACED OUTSIDE OF THE CRZ, AND INSTALLATION MUST MINIMIZE DAMAGE TO EXISTING ROOTS. (SEE DETAILS)
- THE LOCATION OF THE TREE PROTECTION FENCING MUST BE DETERMINED BY AN ARBORIST AND DETAILED ON ANY ASSOCIATED PLANS FOR THE SITE (E.G. TREE CONSERVATION REPORT, TREE DISCLOSURE REPORT, ETC.). THE PLAN AND CONSTRUCTED FENCING MUST BE APPROVED BY CITY FORESTRY STAFF PRIOR TO THE COMMENCEMENT OF WORK.
- IF THE FENCED TREE PROTECTION AREA MUST BE REDUCED TO FACILITATE CONSTRUCTION, MITIGATION MEASURES MUST BE PRESCRIBED BY AN ARBORIST AND APPROVED BY CITY FORESTRY STAFF. THESE MAY INCLUDE THE PLACEMENT OF PLYWOOD, WOOD CHIPS OR STEEL PLATING OVER THE ROOTS FOR PROTECTION OR THE PROPER PRUNING AND CARE OF ROOTS WHERE ENCOUNTERED.

BY-LAWS:

ALL CITY-OWNED TREES ARE PROTECTED UNDER THE MUNICIPAL TREES AND NATURAL AREAS PROTECTION BY-LAW (2006-279), WITHIN THE URBAN AREA.

PRIVATELY-OWNED TREES GREATER THAN 50cm IN DIAMETER ON LOTS 1 HECTARE IN SIZE OR LESS, AND TREES GREATER THAN 10cm IN DIAMETER ON LOTS GREATER THAN 1 HECTARE, ARE PROTECTED UNDER THE URBAN TREE CONSERVATION BY-LAW (2009-200).

CLIENT

SMART LIVING PROPERTIES

CONSULTANTS

ARCHITECTS: WOODMAN ARCHITECT & ASSOCIATES LTD.

SURVEYORS: ANNIS, O'SULLIVAN, VOLLEBEKK LTD. 14 Concourse Gate, Suite 500, Toronto, Ontario M5E 2S6. Phone: (416) 721-0850 / Fax: (416) 721-1079

CIVIL ENGINEERS: WSP

LEGEND

- EXISTING TREE TO REMAIN
- EXISTING TREE TO BE REMOVED
- PROPOSED PLANTING AS PER OWNER'S DISCRETION
- PROPOSED UNIT CONCRETE PAVERS
- PROPOSED 1500mm ht. BLACK VINYL CHAIN LINK FENCE
- PROPOSED TREE PROTECTION FENCE
- PROPOSED SHRUBS / PERENNIALS / ORNAMENTAL GRASSES
- PROPOSED SOD
- PROPOSED DECIDUOUS TREE
- APPROXIMATE LIMIT OF EXCAVATION WITHIN CRITICAL ROOT ZONE

No.	Issue	Date	DR	CK
9	REVISED PER CITY COMMENTS	12/04/2023	ML	JL
8	REVISED PER NEW CIVIL DRAWING	07/18/2023	ML	JL
7	REVISED PER CITY COMMENTS	06/28/2023	ML	JL
6	REVISED PER NEW CIVIL PLAN	02/22/2023	WF	JL
5	REVISED PER NEW SITE PLAN	02/06/2023	ML	JL
4	REVISED PER NEW SITE PLAN	01/27/2023	ML	JL
3	REVISED PER NEW SITE PLAN	01/18/2023	ML	JL
2	ISSUED FOR COMMENTS AND REVIEW	08/27/2021	LC	JL
1	ISSUED FOR COMMENTS AND REVIEW	08/19/2021	LC	JL

JAMES B. LENNOX & ASSOCIATES INC. LANDSCAPE ARCHITECTS
3332 CARLING AVE. OTTAWA, ONTARIO K2H 5A8
Tel. (613) 721-5168 Fax. (1866) 343-3942

PROJECT
112-134 NELSON STREET REDEVELOPMENT
112-134 NELSON STREET, OTTAWA ON

DRAWING
TREE CONSERVATION REPORT & LANDSCAPE PLAN

STAMP: ASSOCIATION OF LANDSCAPE ARCHITECTS OF ONTARIO

SCALE: AS SHOWN

START DATE: JULY 2021

PROJECT NO.: 20-SMT-2175

PROJECT NORTH

DRAWING NO.: L.1

PLOT SIZE ARCH-D

D02-02-21-0076