

Scale 1 : 150  
6 4.5 3.0 1.5 0 3 6 Metres

Metric  
DISTANCES SHOWN ON THIS PLAN ARE IN METRES AND CAN BE CONVERTED TO FEET BY DIVIDING BY 0.3048

Notes  
Distances shown on this plan are ground distances and can be converted to grid distances by multiplying by the combined scale factor of 0.999943.

Bearings are grid, derived from Can-Net 2016 Real Time Network GPS observations on reference points on the southerly limit of Gloucester Street having a bearing of N 59°06'00" E and are referenced to Specified Control Points 0191968005 and 0191968105, MTM Zone 9 ( 76°30' West Longitude ) NAD-83 (original).

TOPOGRAPHICAL PLAN OF SURVEY OF

**LOTS 44, 45 and 46  
(South Gloucester Street Lots)  
PART OF LOTS 44 and 45  
(North Nepean Street Lots)  
REGISTERED PLAN 2996  
CITY OF OTTAWA**

Prepared by Annis, O'Sullivan, Vollebek Ltd.  
AMENDED June 21, 2022 to show additional overhead wire and eave elevations.

**Surveyor's Certificate**

- I CERTIFY THAT:
- This survey and plan are correct and in accordance with the Surveys Act, the Surveyors Act and the regulations made under them.
  - The survey was completed on the 3rd day of December, 2021.

December 15, 2021  
Date

V. Andrew Sheph  
Ontario Land Surveyor

SITE AREA = 1842.5 m<sup>2</sup>

**Legend**

- Denotes
- Survey Monument Planted
  - Survey Monument Found
  - SIB Standard Iron Bar
  - SSIB Short Standard Iron Bar
  - IB Iron Bar
  - CC Cut Cross
  - CP Concrete Pin
  - (WIT) Witness
  - Meas. Measured
  - (AOG) Annis, O'Sullivan, Vollebek Ltd.
  - (P) Registered Plan 2996
  - (PI) Plan 4R-1229
  - (P2) (857) Plan dated Oct. 5, 1987
  - (P3) (AOG) Plan dated Dec. 6, 1988
  - (P4) (647) Plan dated July 4, 2018
  - (P6) (AOG) Plan dated Sept. 12, 2017
  - (P8) (AOG) Plan dated Aug. 8, 2020
  - (P7) (647) Plan dated Mar. 26, 1963
  - (P8) (647) Plan dated Aug. 19, 1964
  - (P9) Plan 4R-31849
  - (D1) Deed Inst. No. CR561159
  - (D2) Deed Inst. No. CR488281
  - (FH) Fire Hydrant
  - (WV) Water Valve
  - (MH-ST) Maintenance Hole (Storm Sewer)
  - (MH-S) Maintenance Hole (Sanitary)
  - (MH-B) Maintenance Hole (Bell Telephone)
  - (MH-H) Maintenance Hole (Hydro)
  - ST Undergroud Storm Sewer
  - S Undergroud Sanitary Sewer
  - W Undergroud Water
  - P Undergroud Power
  - G Undergroud Gas
  - Overhead Wires
  - CB Catch Basin
  - GM Gas Meter
  - HM Hydro Meter
  - BT-B Bell Terminal Box
  - B Bollard
  - CLF Chain Link Fence
  - BF Board Fence
  - PO-M Metal Pole
  - UP Utility Pole
  - AN Anchor
  - AC Air Conditioner
  - Ø Diameter
  - + 65.00 Location of Elevations
  - + 66.00 Top of Concrete Curb/ Retaining Wall Elevation
  - Centreline
  - Property Line
  - PM Parking Meter
  - D Drain
  - OLF Light Fixture
  - RW-C Retaining Wall - Concrete
  - HTB Hydro Transformer Bot
  - T/G Top of Grate
  - INV. Invert

ASSOCIATION OF ONTARIO  
LAND SURVEYORS  
PLAN SUBMISSION FORM  
V-19574

THIS PLAN IS NOT VALID UNLESS  
IT IS AN EMBOSSED ORIGINAL  
COPY ISSUED BY THE SURVEYOR  
In accordance with  
Regulation 1026, Section 29 (3).

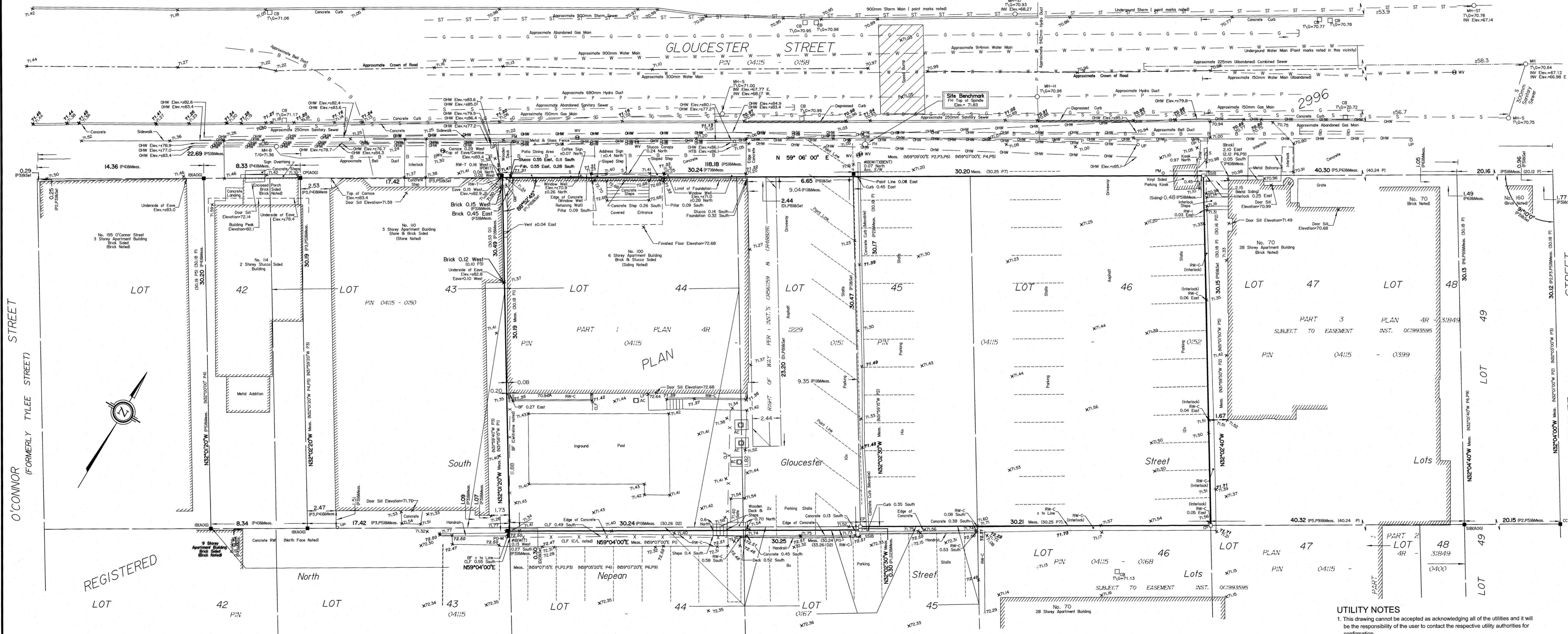
**UTILITY NOTES**

- This drawing cannot be accepted as acknowledging all of the utilities and it will be the responsibility of the user to contact the respective utility authorities for confirmation.
- Only visible surface utilities were located.

**ELEVATION NOTES**

- Elevations shown are geodetic and are referred to the CGVD28 geodetic datum.
- It is the responsibility of the user of this information to verify that the job benchmark has not been altered or disturbed and that its relative elevation and description agrees with the information shown on this drawing.

© Annis, O'Sullivan, Vollebek Ltd. 2021. THIS PLAN IS PROTECTED BY COPYRIGHT!  
**ANNIS, O'SULLIVAN, VOLLEBEK LTD.**  
14 Concourse Gate, Suite 500  
Nepean, Ont. K2E 7S6  
Phone: (613) 727-0850 / Fax: (613) 727-1079  
Email: [hasan@anniss.com](mailto:hasan@anniss.com)  
Lic. No. 22330-21 Classific. LPL4 LPL45 P2996 T. F2



O'CONNOR STREET  
(FORMERLY TYLEE STREET)

METCALFE STREET

GLoucester STREET

PLAN

REGISTERED LOT

North

South

Gloucester Street

Nepean Street

Street

Lots

LOT 48

LOT 49

LOT 46

LOT 47

LOT 42

LOT 43

LOT 44

LOT 45

LOT 46

LOT 47

LOT 48

LOT 49

