

**TOPOGRAPHIC PLAN OF SURVEY OF
PART OF LOT 4
CONCESSION A (BROKEN FRONT)
GEOGRAPHIC TOWNSHIP OF NORTH GOWER
CITY OF OTTAWA**
Surveyed by Annis, O'Sullivan, Vollebek Ltd.

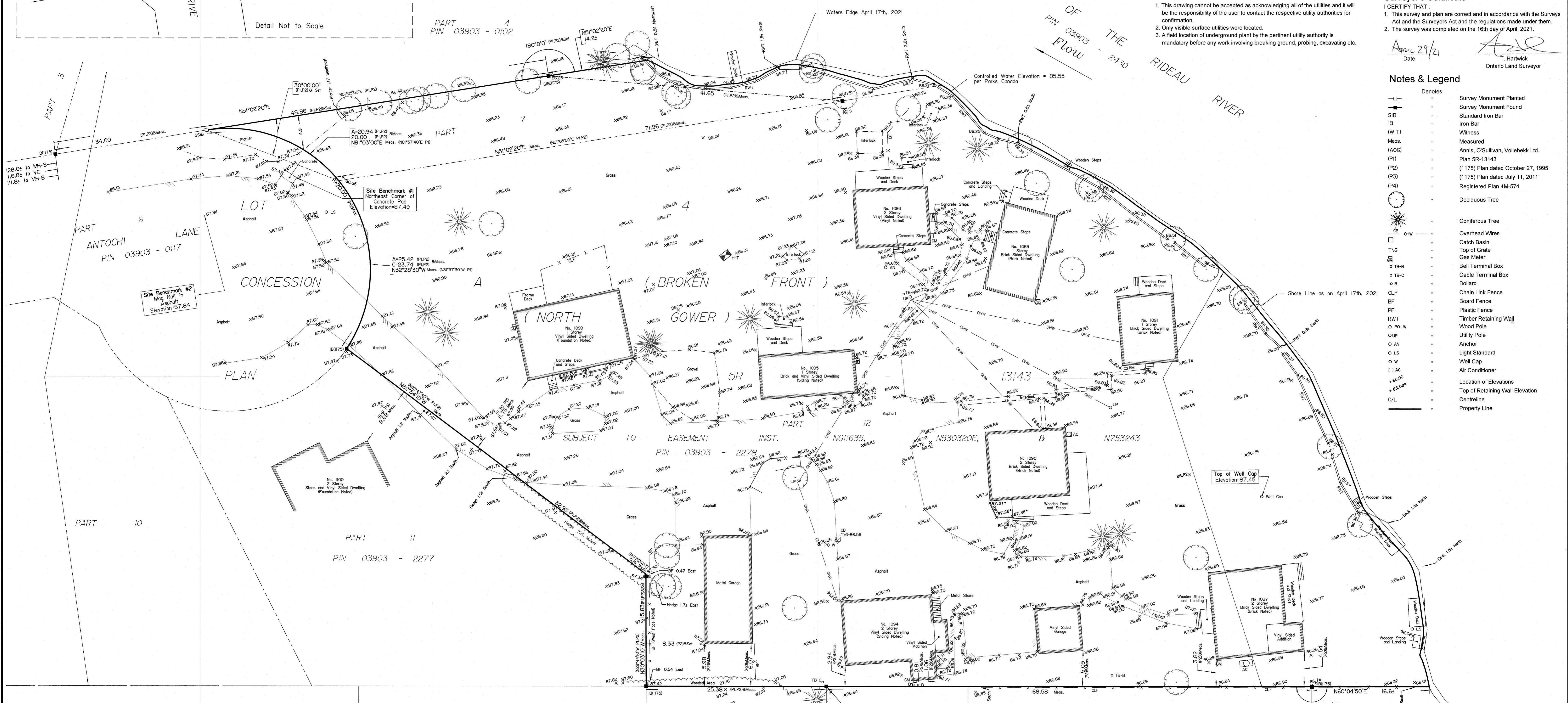
Scale 1: 250

ELEVATION NOTES
1. Elevations shown are geoidetic and are referred to the CGVD28 geoidetic datum.
2. It is the responsibility of the user of this information to verify that the job benchmark has not been altered or disturbed and that its relative elevation and description agrees with the information shown on this drawing.

UTILITY NOTES
1. This drawing cannot be accepted as acknowledging all of the utilities and it will be the responsibility of the user to contact the respective utility authorities for confirmation.
2. Only visible surface utilities were located.
3. A field location of underground plant by the pertinent utility authority is mandatory before any work involving breaking ground, probing, excavating etc.

Notes & Legend

Denotes	
—□—	Survey Monument Planted
—■—	Survey Monument Found
—IB—	Standard Iron Bar
—IB—	Iron Bar
(WIT)	Witness
Meas.	Measured
(AOG)	Annis, O'Sullivan, Vollebek Ltd.
(P1)	Plan 5R-13143
(P2)	(1175) Plan dated October 27, 1995
(P3)	(1175) Plan dated July 11, 2011
(P4)	Registered Plan 4M-574
○	Deciduous Tree
○	Coniferous Tree
—CHW—	Overhead Wires
□	Catch Basin
T/G	Top of Grate
○	Gas Meter
○	Ball Terminal Box
○	Cable Terminal Box
○	Bollard
CLF	Chain Link Fence
BF	Board Fence
PF	Plastic Fence
RWT	Timber Retaining Wall
○ PO-W	Wood Pole
○ UP	Utility Pole
○ AN	Anchor
○ LS	Light Standard
○ W	Well Cap
○ AC	Air Conditioner
+ 65.00	Location of Elevations
+ 65.00	Top of Retaining Wall Elevation
C/L	Centreline
—	Property Line



ASSOCIATION OF ONTARIO
LAND SURVEYORS
PLAN SUBMISSION FORM
V-11489

THIS PLAN IS NOT VALID UNLESS
IT IS AN EMBOSSED ORIGINAL
COPY ISSUED BY THE SURVEYOR
In accordance with
Regulation 1026, Section 29 (3).