

Site Plan Developed Based On Site Survey By Farley, Smith & Densi Surveying LTD.:
 Site Area: 7235.9m²
 LOTS 1 AND 2 (West Friel Street), PART OF LOT 19 (North Rideau Street) PART OF LOTS 1, 2, 3 AND 4 (East Friel Street), PART OF LOTS 1, 2 AND 3 (West Chapel Street) PART OF FRIEL STREET (As Closed by By-Law 203-72, Inst. CR616467) REGISTERED PLAN 43586 CITY OF OTTAWA

Architect
Diamond Schmitt Architects
 384 Adelaide Street West, Suite 100
 Toronto, ON M5V 1R7
 T: (416)-862-8800

Architect
KWC Architects Inc.
 383 Parkdale Avenue, Suite 201
 Ottawa, ON K1Y 4R4
 T: (613)-238-2117

Planner
WSP
 2611 Queensview Drive #300
 Ottawa, ON K2B 8K2
 T: (613)-829-2800

Civil
Morrison Hershfield
 2932 Baseline Road
 Ottawa, ON K2H 1B1
 T: (613)-739-2910

Electrical
Smith + Andersen
 1600 Carling Avenue #530
 Ottawa, ON K1Z 1G3
 T: (613)-230-1186

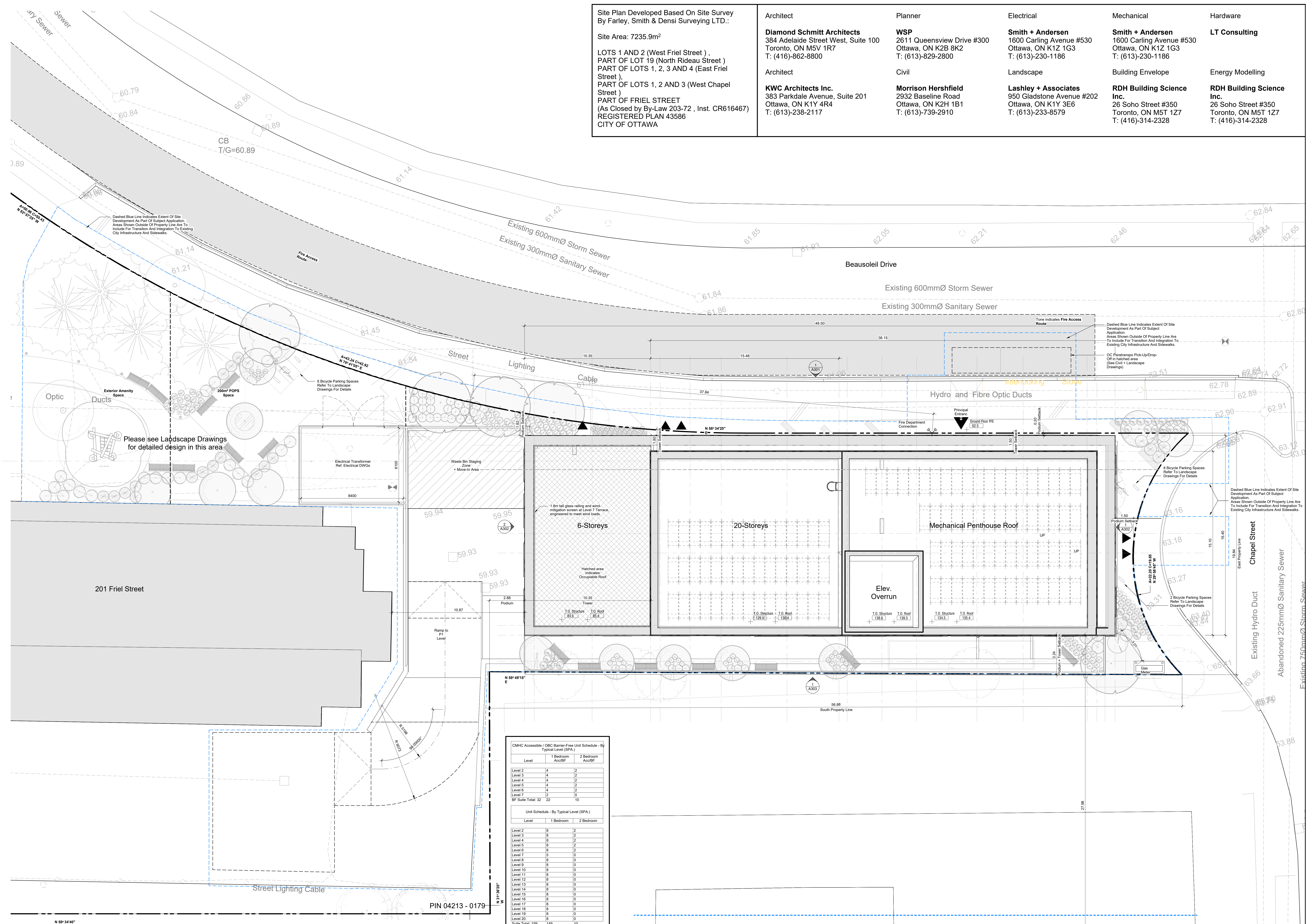
Landscape
Lashley + Associates
 950 Gladstone Avenue #202
 Ottawa, ON K1Y 3E6
 T: (613)-233-8579

Mechanical
Smith + Andersen
 1600 Carling Avenue #530
 Ottawa, ON K1Z 1G3
 T: (613)-230-1186

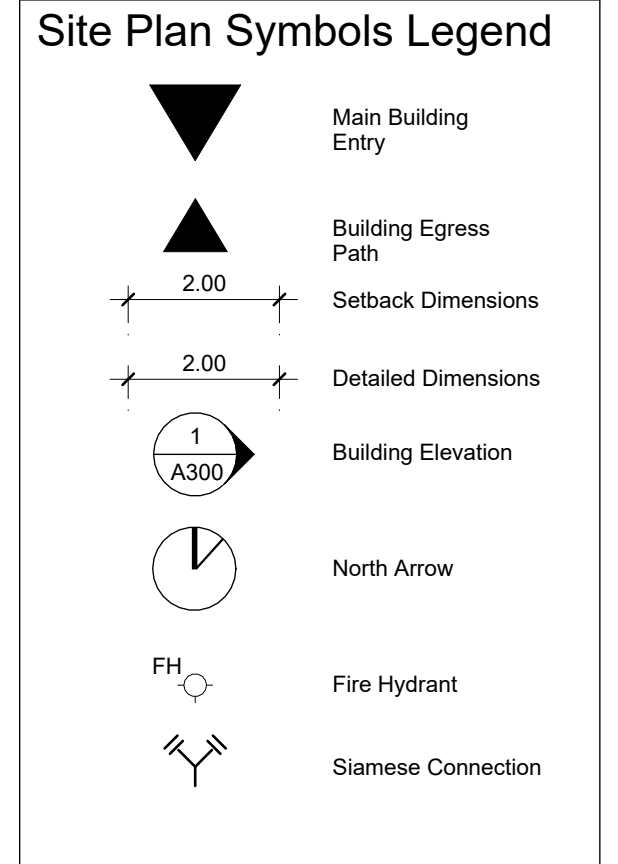
Building Envelope
RDH Building Science Inc.
 26 Soho Street #350
 Toronto, ON M5T 1Z7
 T: (416)-314-2328

Hardware
LT Consulting

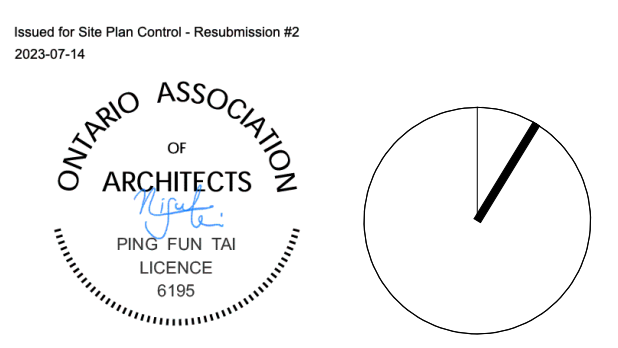
Energy Modelling
RDH Building Science Inc.
 26 Soho Street #350
 Toronto, ON M5T 1Z7
 T: (416)-314-2328



Issue No.	Date	Description
1	22 MAR 2023	Issued for Rezoning and Site Plan Control
3	18 MAY 2023	Issued for Rezoning and Site Plan Control - Resubmission #1
5	13 JUL 2023	Issued for Site Plan Control - Resubmission #2



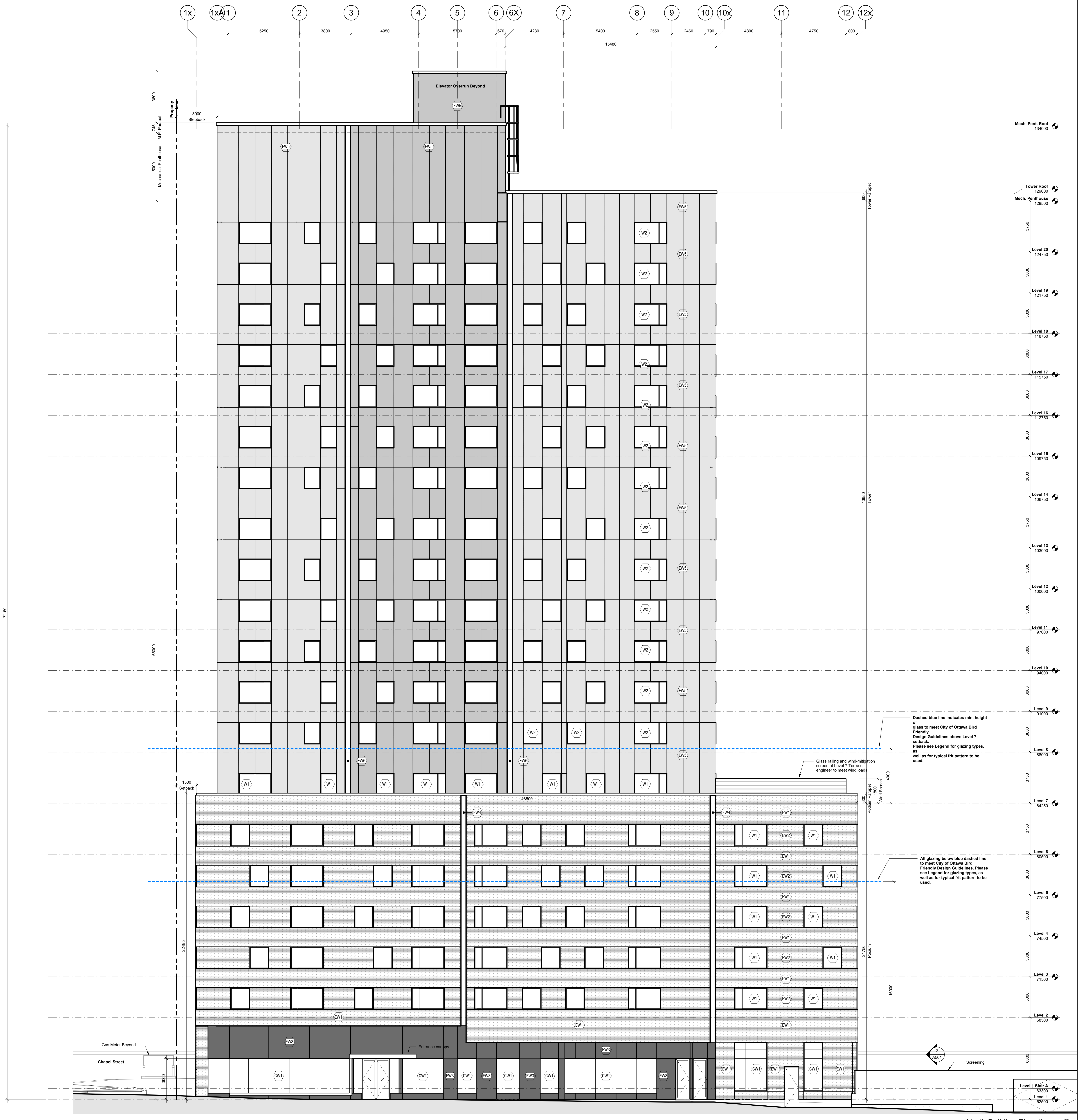
NOT FOR CONSTRUCTION



Contractor Must Check & Verify all Dimensions on the Job.
 Do Not Scale Drawings.
 All Drawings, Specifications and Related Documents are the Copyright Property of the Architect and Must be Returned Upon Request. Reproduction or Change of any of the Drawings and Related Documents is Prohibited Without the Written Permission of the Architect.
 This Drawing is Not to be Used for Construction Until Signed by the Architect.

OCH Friel Street / Chapel
 200-201 Friel Street (200 Beauséjour), Ottawa, ON K1Z 1G3
 221021

Level	Gross Floor Area (m ²)	Gross Floor Area (ft ²)
Level P1	100.51 m ²	1081.50 ft ²
Level 1	204.72 m ²	2203.62 ft ²
Level 2	690.19 m ²	7426.11 ft ²
Level 3	690.19 m ²	7426.11 ft ²
Level 4	690.19 m ²	7426.11 ft ²
Level 5	690.19 m ²	7426.11 ft ²
Level 6	690.19 m ²	7426.11 ft ²
Level 7	690.19 m ²	7426.11 ft ²
Level 8	690.19 m ²	7426.11 ft ²
Level 9	690.19 m ²	7426.11 ft ²
Level 10	690.19 m ²	7426.11 ft ²
Level 11	690.19 m ²	7426.11 ft ²
Level 12	690.19 m ²	7426.11 ft ²
Level 13	690.19 m ²	7426.11 ft ²
Level 14	690.19 m ²	7426.11 ft ²
Level 15	690.19 m ²	7426.11 ft ²
Level 16	690.19 m ²	7426.11 ft ²
Level 17	690.19 m ²	7426.11 ft ²
Level 18	690.19 m ²	7426.11 ft ²
Level 19	690.19 m ²	7426.11 ft ²
Level 20	690.19 m ²	7426.11 ft ²
Mech. Penthouse	89.23 m ²	959.87 ft ²
Grand total:	10096.11 m ²	108705.87 ft ²



Issue

No.	Date	Description
1	22 MAR 2023	Issued for Rezoning and Site Plan Control
3	18 MAY 2023	Issued for Rezoning and Site Plan Control - Resubmission #1
5	13 JUL 2023	Issued for Site Plan Control - Resubmission #2

- Legend - Cladding Materials
- (EW1) Exterior Wall Type 1 - Masonry Cladding
 - (EW2) Exterior Wall Type 2 - Masonry/Precast Cladding
 - (EW3) Exterior Wall Type 3 - Sintered Stone Cladding
 - (EW4) Exterior Wall Type 4 - Coloured Masonry Cladding
 - (EW5) Exterior Wall Type 5 - Metal Panel Cladding
 - (EW6) Exterior Wall Type 6 - Coloured Metal Panel Cladding
 - (CW1) Curtain Wall Type 1 - Triple Glazed Curtain Wall Bird-Friendly Fit on Surface #1 to meet Ottawa Bird Friendly Design Guidelines*
 - (W1) Punched Window Type 1 - Triple Glazed Fibreglass Window Bird-Friendly Fit on Surface #1 to meet Ottawa Bird Friendly Design Guidelines*
 - (W2) Punched Window Type 2 - Triple Glazed Fibreglass Window Clear glazing without fit
- *Bird friendly fit pattern:
- Bird friendly fit pattern to be installed on Surface #1, to meet the layout illustrated below, as well as requirements noted in Div. 08 and Friendly Design Guidelines.

NOT FOR CONSTRUCTION

Issued for Site Plan Control - Resubmission #2
 OCHTHIBO ASSOCIATION OF ARCHITECTS
 INC.
 PMS' Firm, Ltd.
 1000
 6100

Contractor Must Check & Verify all Dimensions on the Job.
 Do Not Scale Drawings.
 All Drawings, Specifications and Related Documents are the Copyright Property of the Architect and Must be Returned Upon Request. Reproduction or Circulation of any Drawings and Related Documents in Part or Whole is Prohibited Without the Written permission of the Architect.
 This Drawing is Not to be Used for Construction Until Signed by the Architect.

OCH Friel Street / Chapel
 200-201 Friel Street (200 Beausoleil), Ottawa, ON K1P 2T1

North Exterior Building Elevation
 As indicated
A301
 1:100

Issue #

No.	Date	Description
1	22 MAR 2023	Issued for Rezoning and Site Plan Control
3	18 MAY 2023	Issued for Rezoning and Site Plan Control - Resubmission #1
5	13 JUL 2023	Issued for Site Plan Control - Resubmission #2

- Legend - Cladding Materials**
- (EW1) Exterior Wall Type 1 - Masonry Cladding
 - (EW2) Exterior Wall Type 2 - Masonry/Precast Cladding
 - (EW3) Exterior Wall Type 3 - Sintered Stone Cladding
 - (EW4) Exterior Wall Type 4 - Coloured Masonry Cladding
 - (EW5) Exterior Wall Type 5 - Metal Panel Cladding
 - (EW6) Exterior Wall Type 6 - Coloured Metal Panel Cladding
 - (CW1) Curtain Wall Type 1 - Triple Glazed Curtain Wall Bird-Friendly Frit on Surface #1 to meet Ottawa Bird Friendly Design Guidelines*
 - (W1) Punched Window Type 1 - Triple Glazed Fibreglass Window Bird-Friendly Frit on Surface #1 to meet Ottawa Bird Friendly Design Guidelines*
 - (W2) Punched Window Type 2 - Triple Glazed Fibreglass Window Clear glazing without frit
- *Bird friendly frit pattern:

- Bird friendly frit pattern to be installed on Surface #1, to meet the layout illustrated below, as well as requirements noted in Div. 08 and Ottawa Bird Friendly Design Guidelines.

NOT FOR CONSTRUCTION

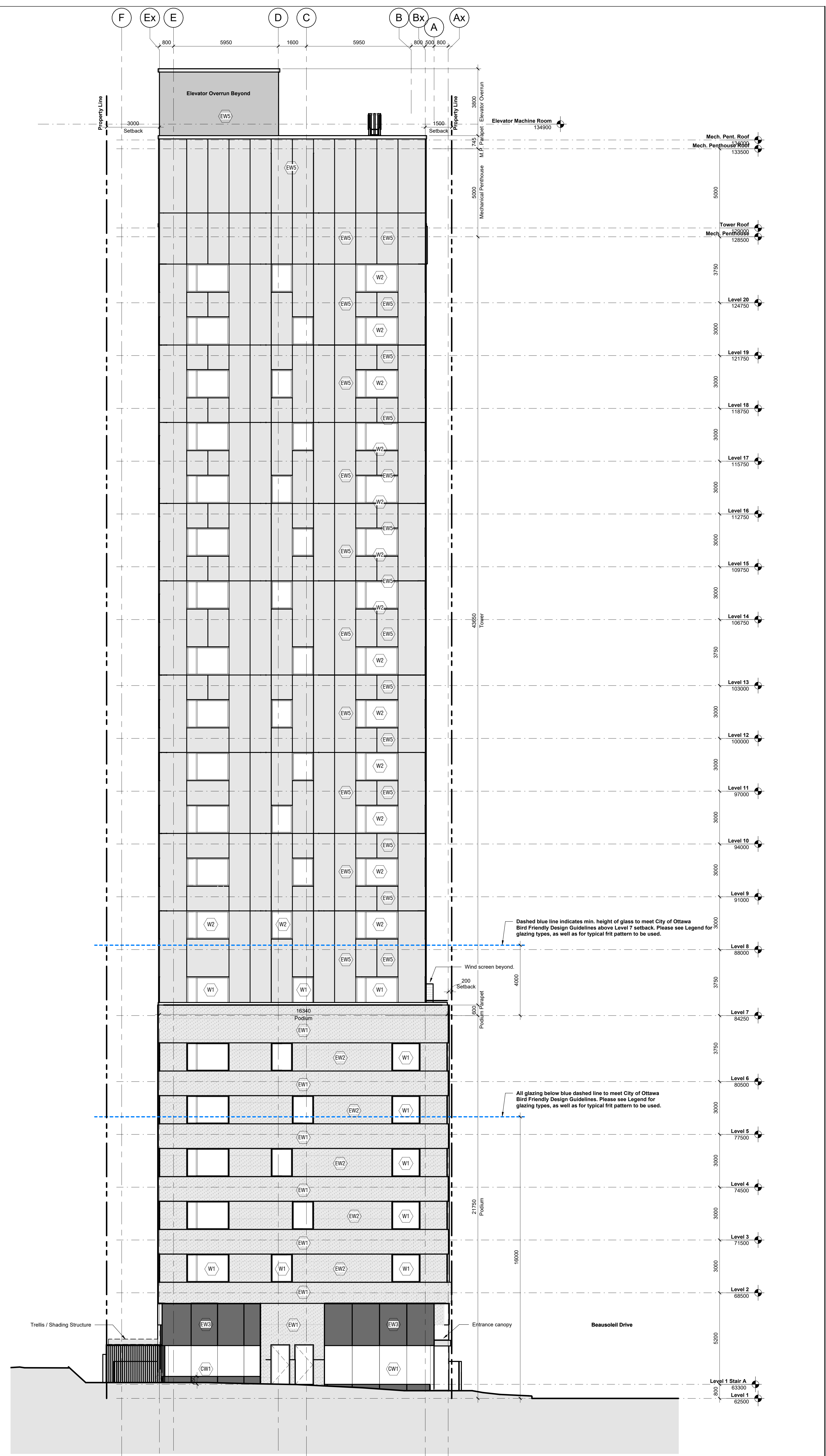


Contributor Must Check & Verify all Dimensions on the Job.
 Do Not Scale Drawings.
 All Drawings, Specifications and Related Documents are the Copyright Property of the Architect and Must be Returned Upon Request. Reproduction or Change without the Written permission of the Architect.
 This Drawing is Not to be Used for Construction Until Signed by the Architect.

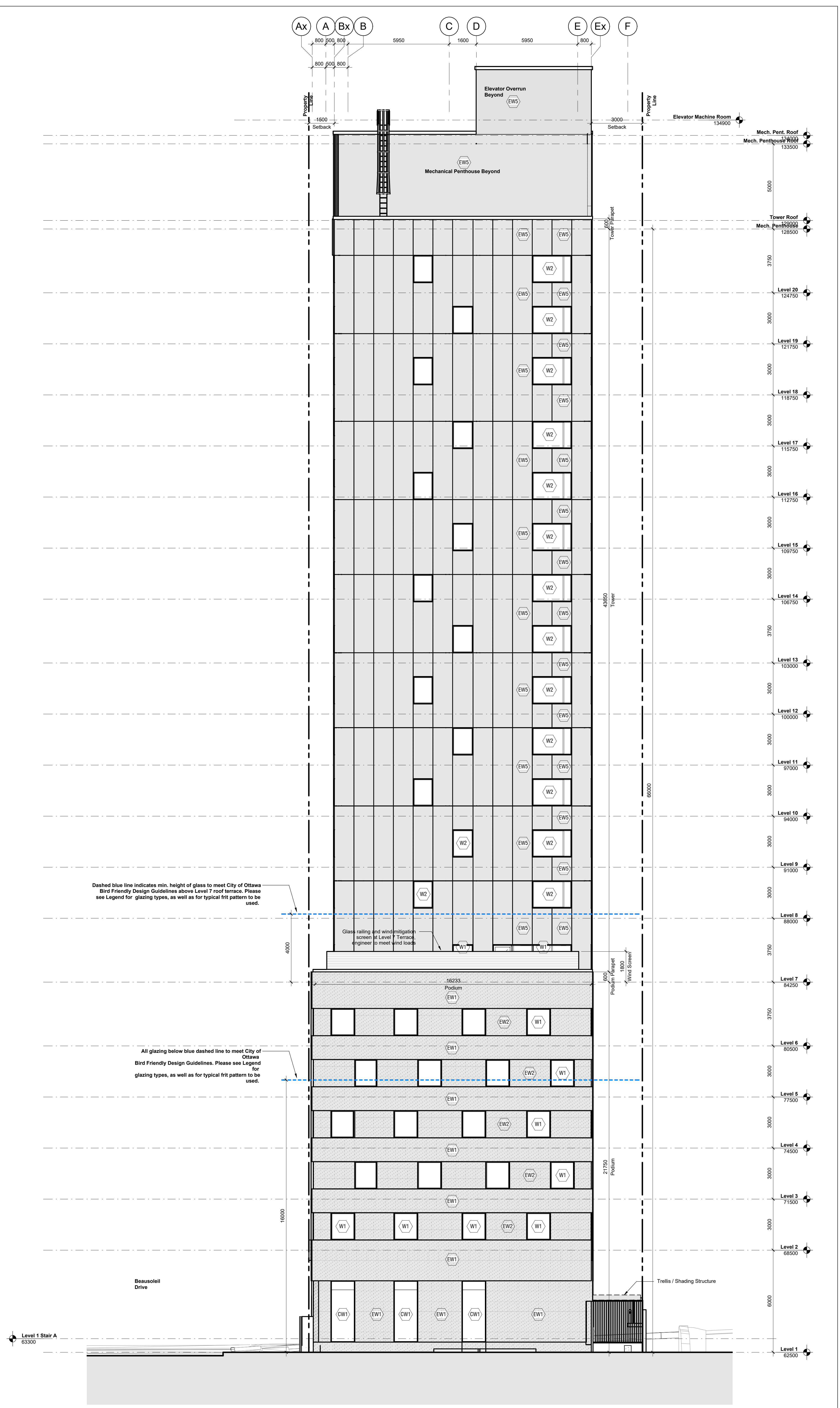
OCH Friel Street / Chapel
 200-201 Friel Street (200 Beausoleil), Ottawa, ON K1P 6E6
 22121

East and West Exterior Building Elevations
 As indicated

A302



East Building Elevation 1:100



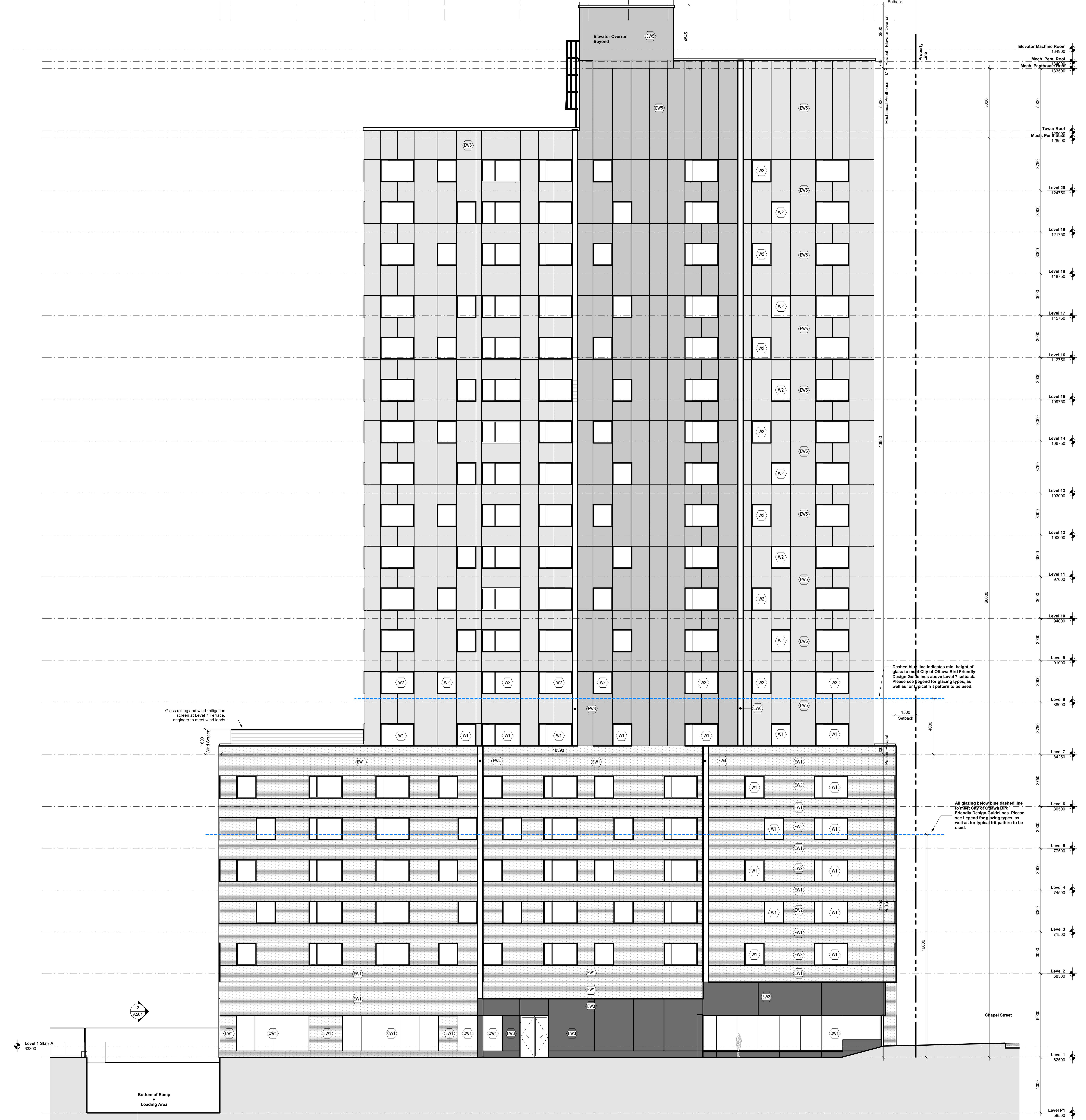
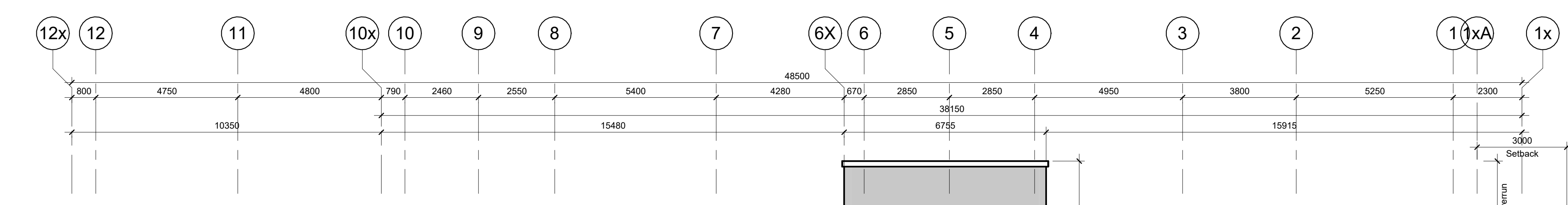
West Building Elevation 1:100

Dashed blue line indicates min. height of glass to meet City of Ottawa Bird Friendly Design Guidelines above Level 7 roof terrace. Please see Legend for glazing types, as well as for typical frit pattern to be used.

All glazing below blue dashed line to meet City of Ottawa Bird Friendly Design Guidelines. Please see Legend for glazing types, as well as for typical frit pattern to be used.

Dashed blue line indicates min. height of glass to meet City of Ottawa Bird Friendly Design Guidelines above Level 7 setback. Please see Legend for glazing types, as well as for typical frit pattern to be used.

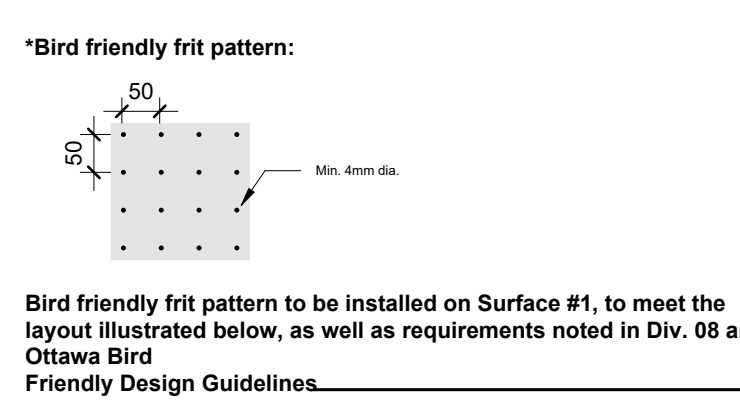
All glazing below blue dashed line to meet City of Ottawa Bird Friendly Design Guidelines. Please see Legend for glazing types, as well as for typical frit pattern to be used.



Issue

No.	Date	Description
1	22 MAR 2023	Issued for Rezoning and Site Plan Control
3	18 MAY 2023	Issued for Rezoning and Site Plan Control - Resubmission #1
5	13 JUL 2023	Issued for Site Plan Control - Resubmission #2

- Legend - Cladding Materials**
- (EW1) Exterior Wall Type 1 - Masonry Cladding
 - (EW2) Exterior Wall Type 2 - Masonry/Precast Cladding
 - (EW3) Exterior Wall Type 3 - Sintered Stone Cladding
 - (EW4) Exterior Wall Type 4 - Coloured Masonry Cladding
 - (EW5) Exterior Wall Type 5 - Metal Panel Cladding
 - (EW6) Exterior Wall Type 6 - Coloured Metal Panel Cladding
 - (CW1) Curtain Wall Type 1 - Triple Glazed Curtain Wall Bird-Friendly Frit on Surface #1 to meet Ottawa Bird Friendly Design Guidelines*
 - (W1) Punched Window Type 1 - Triple Glazed Fibreglass Window Bird-Friendly Frit on Surface #1 to meet Ottawa Bird Friendly Design Guidelines*
 - (W2) Punched Window Type 2 - Triple Glazed Fibreglass Window Clear glazing without frit



NOT FOR CONSTRUCTION



Contractor Must Check & Verify all Dimensions on the Job.
Do Not Scale Drawings.
All Drawings, Specifications and Related Documents are the Copyright Property of the Architect and Must be Returned Upon Request. Reproduction or Circulation of these Drawings and Related Documents in Part or in Whole is Prohibited Without the Written permission of the Architect.
This Drawing is Not to be Used for Construction Until Signed by the Architect.

OCH Friel Street / Chapel
200-201 Friel Street (200 Beauséjour), Ottawa, ON K1R 7Y1