

Proj. 221021
 Ottawa Community Housing
 OCH Friel Street / Chapel
 200-201 Friel Street
 Ottawa, ON
 K1N 8Z2

Issued for Rezoning and Site Plan Control
 03/22/2023

SURVEY

492-22 Registered Plan 43586

ARCHITECTURAL

A010 Site Plan
 A011 Site Plan - Zoom In
 A040 Building Statistics
 A100.A Basement Floor Plan
 A100.B Basement + Loading Area Plan
 A301 North Exterior Building Elevation
 A302 East and West Exterior Building Elevations
 A303 South Exterior Building Elevation

LANDSCAPE

D1-1 Demolition Plan
 L1-1 Landscape Plan
 L1-2 POPS Area Landscape Plan
 L1-3 Planting Plan
 L2-1 Details
 L2-2 Details
 RP10 Site Plan - Entire Property
 TP-1 Tree Protection Plan

CIVIL

C000 Cover
 C001 Site Servicing Plan
 C002 Grading Plan
 C003 Erosion and Sediment Control
 C101 Details (1 of 4)
 C102 Details (2 of 4)
 C103 Details (3 of 4)
 C104 Details (4 of 4)
 C700 Removals Plan
 C701 Roof Drain Layout & Ponding
 C800 Existing Site Catchments
 C801 Proposed Site Catchments



Architect
Diamond Schmitt Architects
 384 Adelaide Street West, Suite 100
 Toronto, ON M5V 1R7
 T: (416)-862-8800

Architect
KWC Architects Inc.
 383 Parkdale Avenue, Suite 201
 Ottawa, ON K1Y 4R4
 T: (613)-239-2117

Planner
WSP
 2611 Queensview Drive #300
 Ottawa, ON K2B 8K2
 T: (613)-829-2800

Civil
Morrison Hershfield
 2932 Baseline Road
 Ottawa, ON K2H 1B1
 T: (613)-739-2910

Electrical
Smith + Andersen
 1600 Carling Avenue #530
 Ottawa, ON K1Z 1G3
 T: (613)-230-1186

Landscape
Lashley + Associates
 950 Gladstone Avenue #202
 Ottawa, ON K1Y 3E6
 T: (613)-233-8579

Mechanical
Smith + Andersen
 1600 Carling Avenue #530
 Ottawa, ON K1Z 1G3
 T: (613)-230-1186

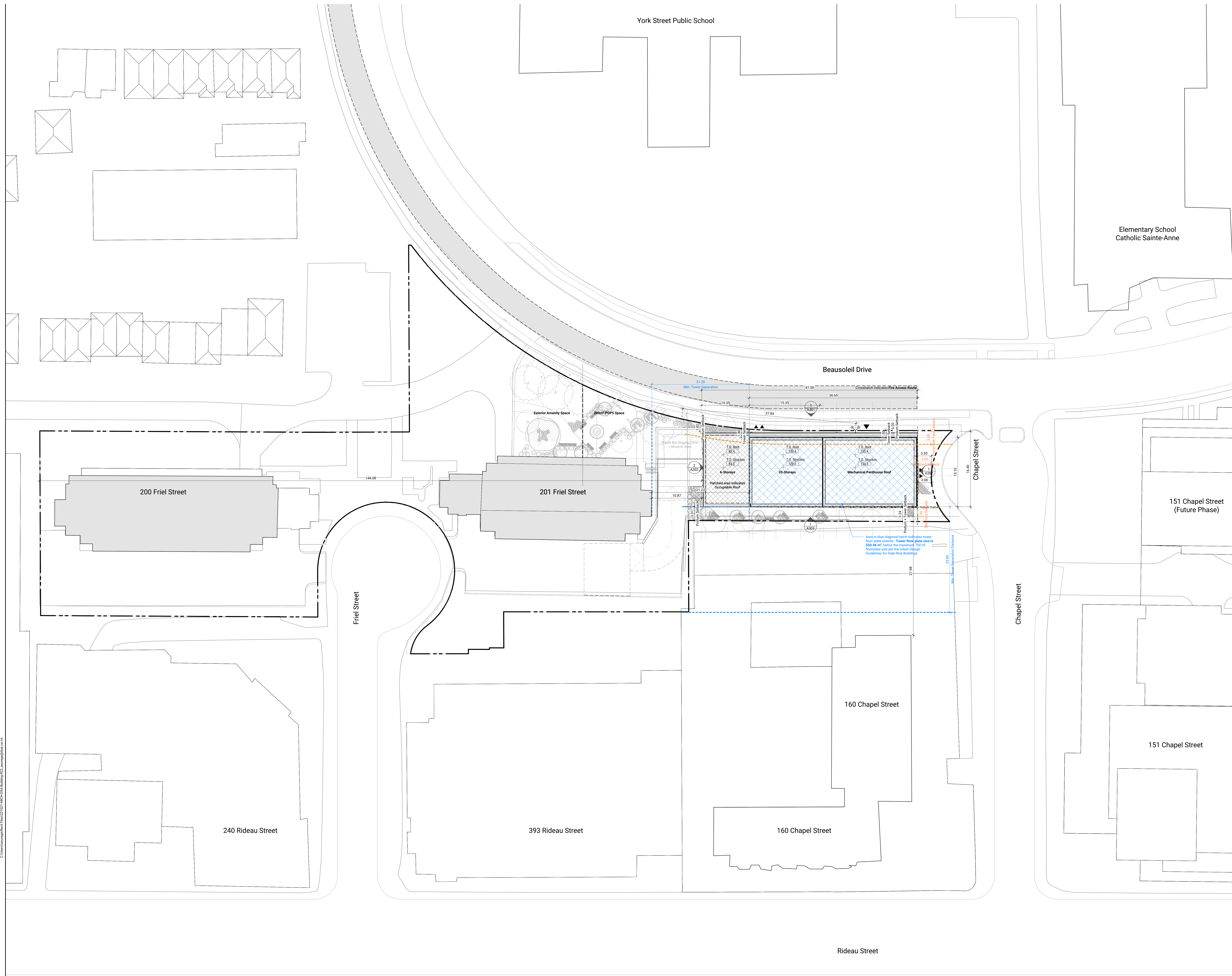
Building Envelope
RDH Building Science Inc.
 26 Soho Street #350
 Toronto, ON M5T 1Z7
 T: (416)-314-2329

Hardware
LT Consulting

Energy Modelling
RDH Building Science Inc.
 26 Soho Street #350
 Toronto, ON M5T 1Z7
 T: (416)-314-2329

**diamond
 schmitt**

No.	Date	Description
1	22 MAR 2023	Issued for Rezoning and Site Plan Control



Elementary School
Catholic Sainte-Anne

York Street Public School

Beausoleil Drive

200 Friel Street

201 Friel Street

151 Chapel Street
(Future Phase)

160 Chapel Street

151 Chapel Street

240 Rideau Street

393 Rideau Street

160 Chapel Street

Rideau Street

Site Plan Symbols Legend

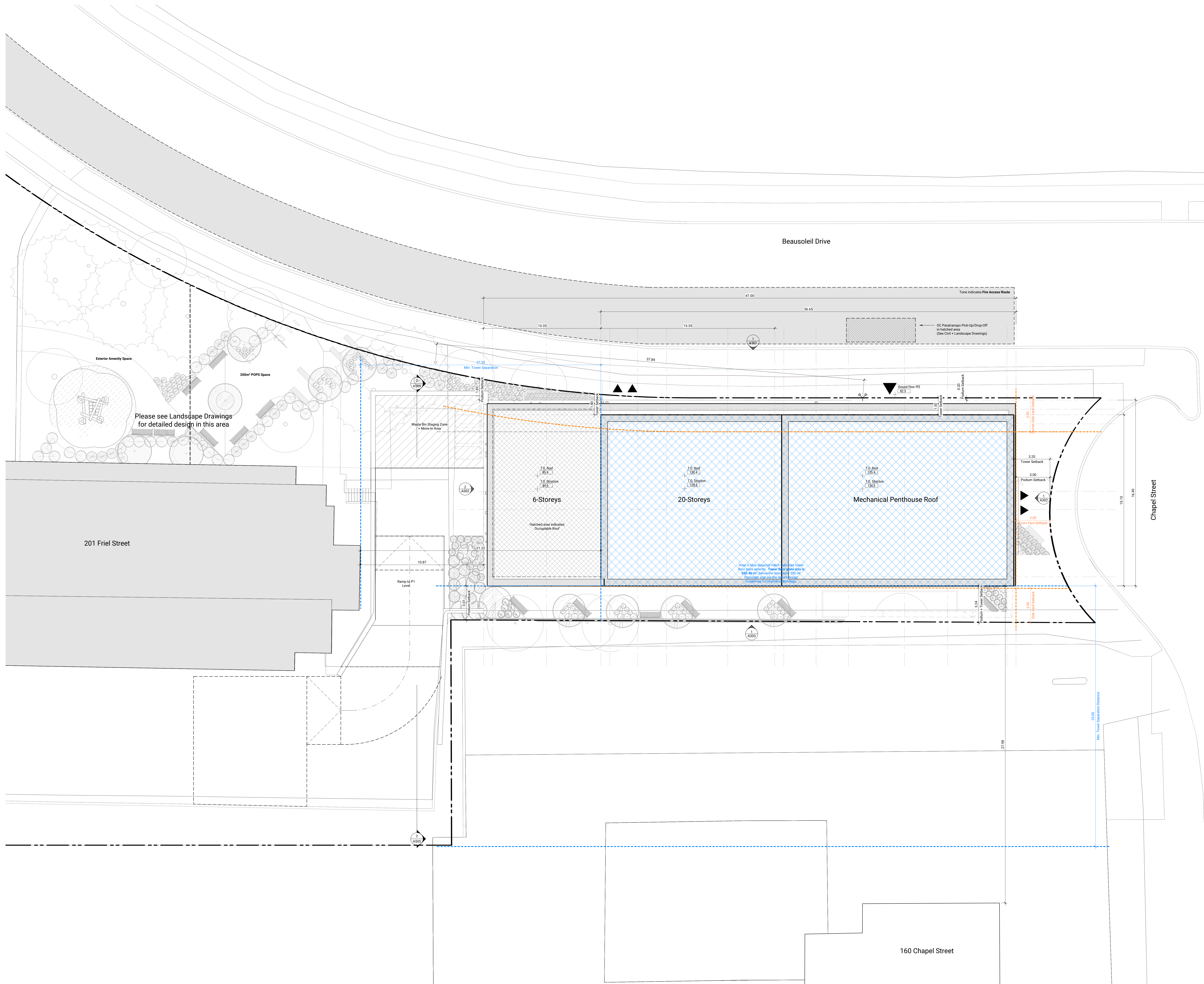
- Main Building Entry
- Building Egress Path
- Zoning Dimension
- Zoning Definition
- Urban Design Height Guideline Dimension
- Urban Design Height Guideline Definition
- Setback Dimensions
- Detailed Dimensions
- Building Elevation
- North Arrow
- Fire Hydrant
- Slamette Connection



Contractor Must Check & Verify all Dimensions on the Job.
Do Not Scale Drawings.
All Drawings, Specifications and Related Documents are the Copyright Property of the Architect and shall be returned upon Request. Reproduction or Drawing, Specification or Related Documents in Part or in Whole is Forbidden Without the Written permission of the Architect.
This Drawing is Not to be Used for Construction Until Signed by the Architect.

OCH Friel Street / Chapel
200-201 Friel Street, Ottawa, ON K
221021

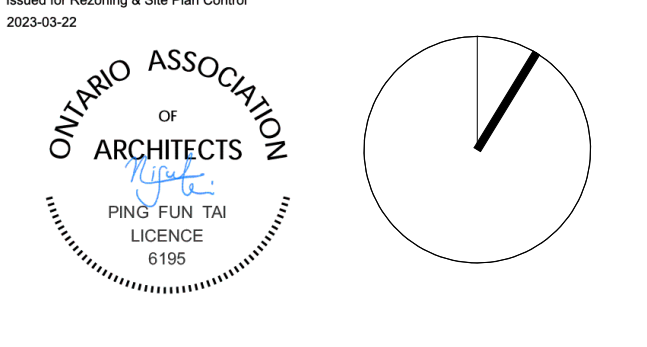
C:\Users\dschmitt\OneDrive\Desktop\Building 022_smp\p01\final.dwg 2023/03/21 11:55:56 AM



Please see Landscape Drawings for detailed design in this area

Site Plan Symbols Legend

- Main Building Entry
- Building Egress Path
- Zoning Dimension
- Zoning Definition
- Urban Design Highrise Guideline Dimension
- Urban Design Highrise Guideline Definition
- Setback Dimensions
- Detailed Dimensions
- Building Elevation
- North Arrow
- Fire Hydrant
- Slamete Connection



Contractor Must Check & Verify all Dimensions on the Job.
Do Not Scale Drawings.
All Drawings, Specifications and Related Documents are the Copyright Property of the Architect and Shall Be Kept in Strict Confidence. Reproduction or Drawing, Specification or Related Documents in Part or in Whole is Forbidden Without the Written permission of the Architect.
This Drawing is Not to be Used for Construction Until Signed by the Architect.

OCH Friel Street / Chapel
200-201 Friel Street, Ottawa, ON K
221021

20230322 11:45:01 AM C:\Users\dschmitt\OneDrive\Documents\Projects\2023\200-201 Friel Street\Building 022_smp\p01.dwg

- GENERAL NOTES**
Plan Symbols
- Denotes Sloped Roof Insulation
 - Denotes Roof Drain
 - Denotes Floor Drain
 - Denotes Area Drain
 - Denotes Hose Bib Location
 - Denotes Proposed Samese Connection Location
 - Denotes Proposed Gas Meter Location
 - Denotes Rain Water Leader
 - Convex Mirror

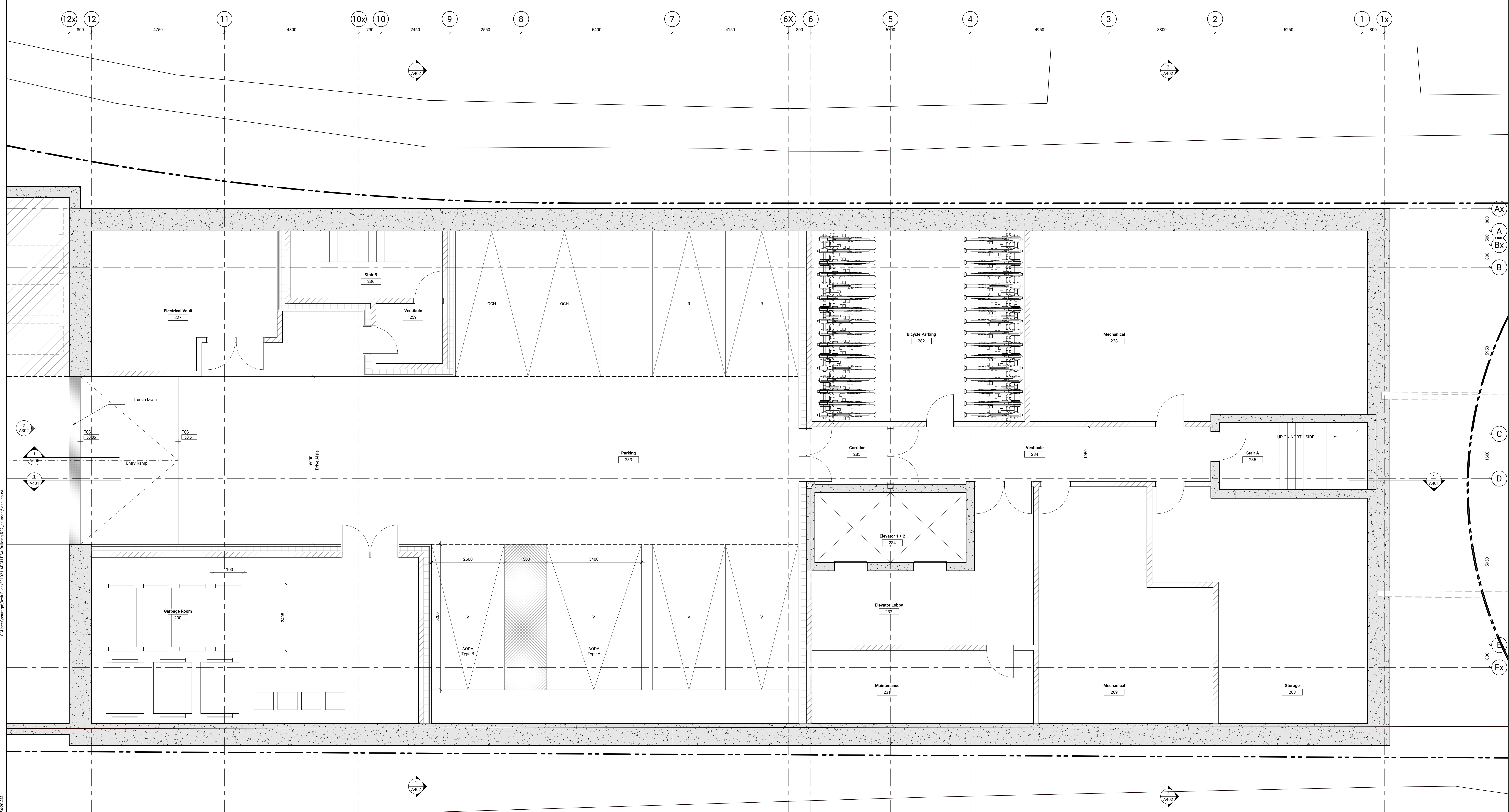
- GENERAL NOTES**
Plans
1. Refer to Building Elements Schedule for Exterior Wall, Partition, Roof, Ceiling, and Soffit Types.
 2. Refer to Mechanical and Electrical Drawings for Additional Requirement.
 3. At Locations Where Mech. Ducts Interfere with Full Height Construction of Interior Partitions, Offset Partition Above Ceiling and Brace as Required. Maintain Fire Separation/Sound Rating of Partition. Offsetting of Partitions Will Only Be Permitted Where Duckwork Cannot Be Positioned.
 4. All Dimensions are Taken to Face of Masonry or Concrete at Masonry and Concrete Walls and Partitions. At Steel Stud Partitions, Dimensions are Taken to Face of Gypsum Board, Unless Otherwise Noted.
 5. Increase Thickness of Walls or Full Out Wall Thickness as Required to Accommodate Mechanical and Electrical Panels and Services. Maintain Fire Separation Around Back of Panels Where Applicable.
 6. For Dimensions of Concrete Refer to Slab Edge Drawings.

Issued

No.	Date	Description
1	22 MAR 2023	Issued for Revising and Site Plan Control

Proposed Parking Supply

Type	Count
OCH Parking	2
Residential Parking	2
Visitor Parking	4
	8



2023-03-22 11:42:00 AM C:\Users\jstange\OneDrive\Documents\11-ARCH\1051\Building\022_A100-04\Basement.dwg



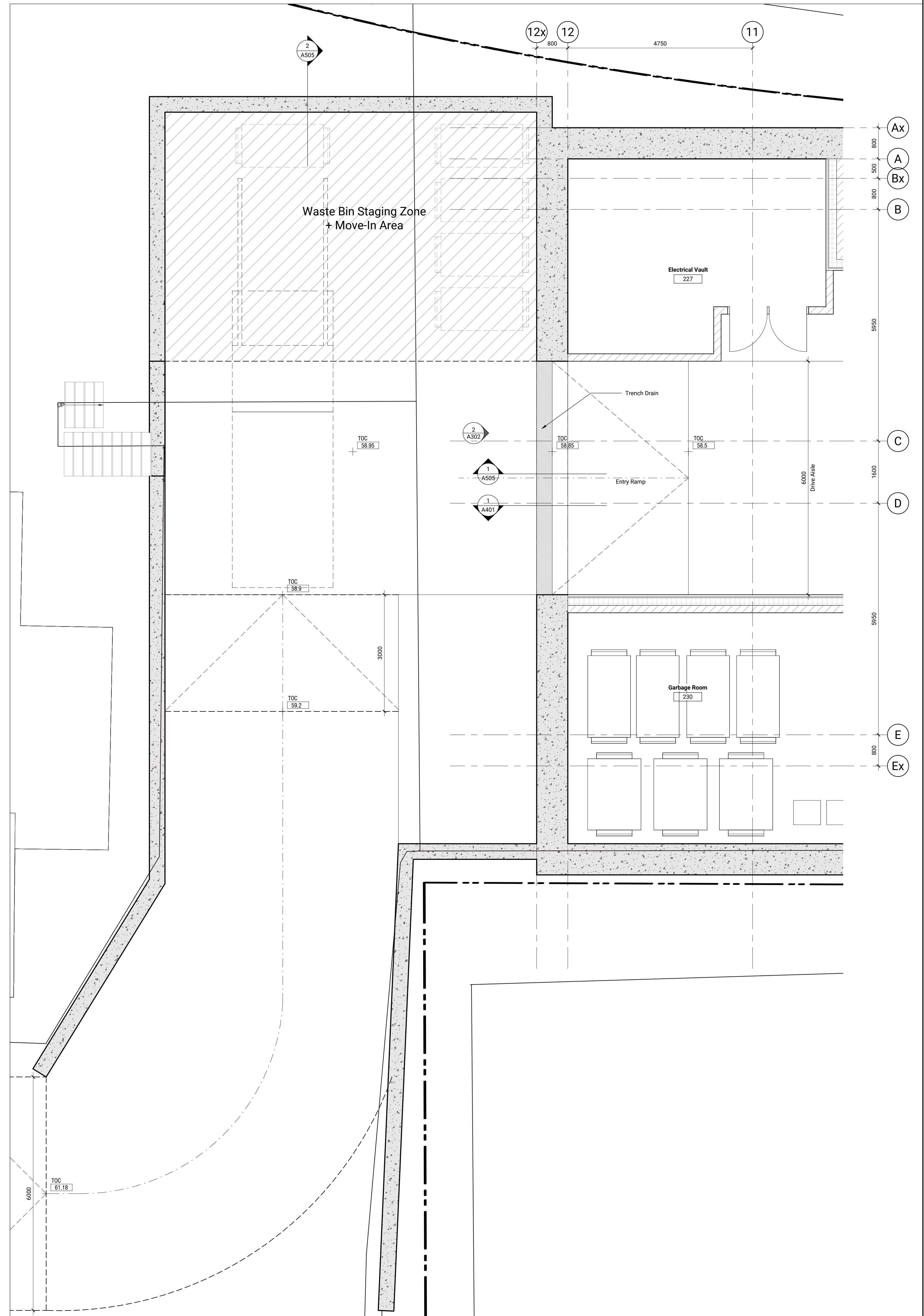
Contractor Must Check & Verify all Dimensions on the Job.
 Do Not Scale Drawings.
 All Drawings, Specifications and Related Documents are the Copyright Property of the Architect and Shall Remain Open Record. Reproduction of Drawings, Specifications and Related Documents in Part or in Whole is Forbidden Without the Written Permission of the Architect.
 This Drawing is Not to be Used for Construction Until Signed by the Architect.

OCH Friel Street / Chapel
 200-201 Friel Street, Ottawa, ON K1P 1Y1

- GENERAL NOTES**
Plan Symbols
- Denotes Sloped Roof Insulation
 - Denotes Roof Drain
 - Denotes Floor Drain
 - Denotes Area Drain
 - Denotes Hose Bib Location
 - Denotes Proposed Siamese Connection Location
 - Denotes Proposed Gas Meter Location
 - Denotes Rain Water Leader
 - Convex Mirror

- GENERAL NOTES**
Plans
1. Refer to Building Elements Schedule for Exterior Wall, Partition, Roof, Ceiling, and Soffit Types.
 2. Refer to Mechanical and Electrical Drawings for Additional Requirement.
 3. At Locations Where Mech. Ducts Interfere with Full Height Construction of Interior Partitions, Offset Partition Above Ceiling and Brace as Required. Maintain Fire Separation/Sound Rating of Partition. Offsetting of Partitions Will Only Be Permitted Where Ductwork Cannot Be Positioned.
 4. All Dimensions are Taken to Face of Masonry or Concrete at Masonry and Concrete Walls and Partitions. At Steel Stud Partitions, Dimensions are Taken to Face of Gypsum Board, Unless Otherwise Noted.
 5. Increase Thickness of Walls or Full Out Wall Thickness as Required to Accommodate Mechanical and Electrical Panels and Services. Maintain Fire Separation Around Back of Panels Where Applicable.
 6. For Dimensions of Concrete Refer to Slab Edge Drawings.

No.	Date	Description
1	22 MAR 2023	Issued for Rezoning and Site Plan Control



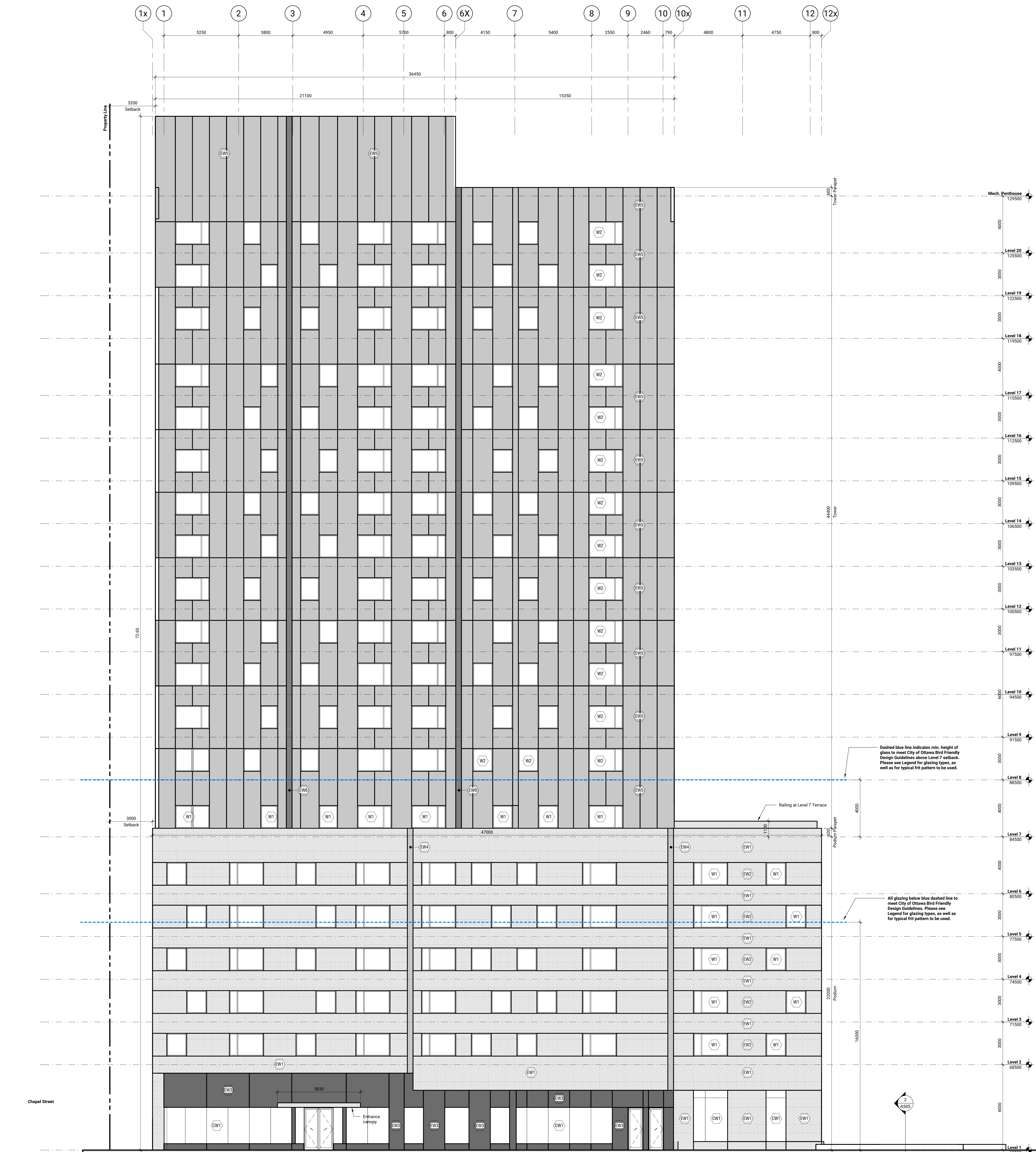
Basement + Loading Zone
 1:50 (A100-B)



Contractor Must Check & Verify all Dimensions on the Job.
 Do Not Scale Drawings.
 All Drawings, Specifications and Related Documents are the Copyright Property of the Architect and Make No Part Hereof. Reproduction of Drawings, Specifications and Related Documents in Part or in Whole is Forbidden Without the Written Permission of the Architect.
 This Drawing is Not to be Used for Construction Until Signed by the Architect.

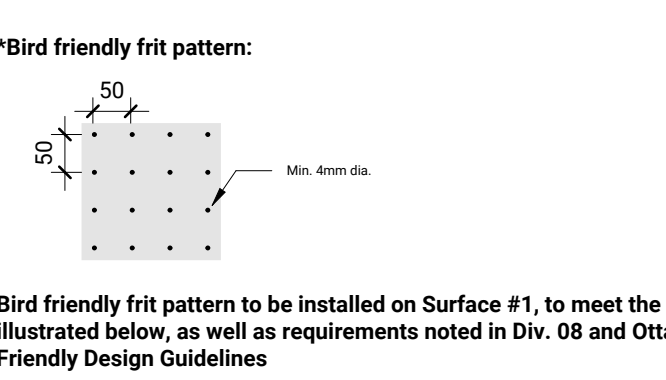
OCH Friel Street / Chapel
 200-201 Friel Street, Ottawa, ON K
 221021

Basement + Loading Area Plan
 As Indicated
A100-B



No.	Date	Description
1	22 MAR 2023	Issued for Rezoning and Site Plan Control

- Legend - Cladding Materials**
- (EW1) Exterior Wall Type 1 - Masonry Cladding
 - (EW2) Exterior Wall Type 2 - Masonry/Precast Cladding
 - (EW3) Exterior Wall Type 3 - Sintered Stone Cladding
 - (EW4) Exterior Wall Type 4 - Coloured Masonry Cladding
 - (EW5) Exterior Wall Type 5 - Metal Panel Cladding
 - (EW6) Exterior Wall Type 6 - Coloured Metal Panel Cladding
 - (CW1) Curtain Wall Type 1 - Triple Glazed Curtain Wall Bird-Friendly Frit on Surface #1 to meet Ottawa Bird Friendly Design Guidelines*
 - (W1) Punched Window Type 1 - Triple Glazed Fibreglass Window Bird-Friendly Frit on Surface #1 to meet Ottawa Bird Friendly Design Guidelines*
 - (W2) Punched Window Type 2 - Triple Glazed Fibreglass Window Clear glazing without frit



NOT FOR CONSTRUCTION

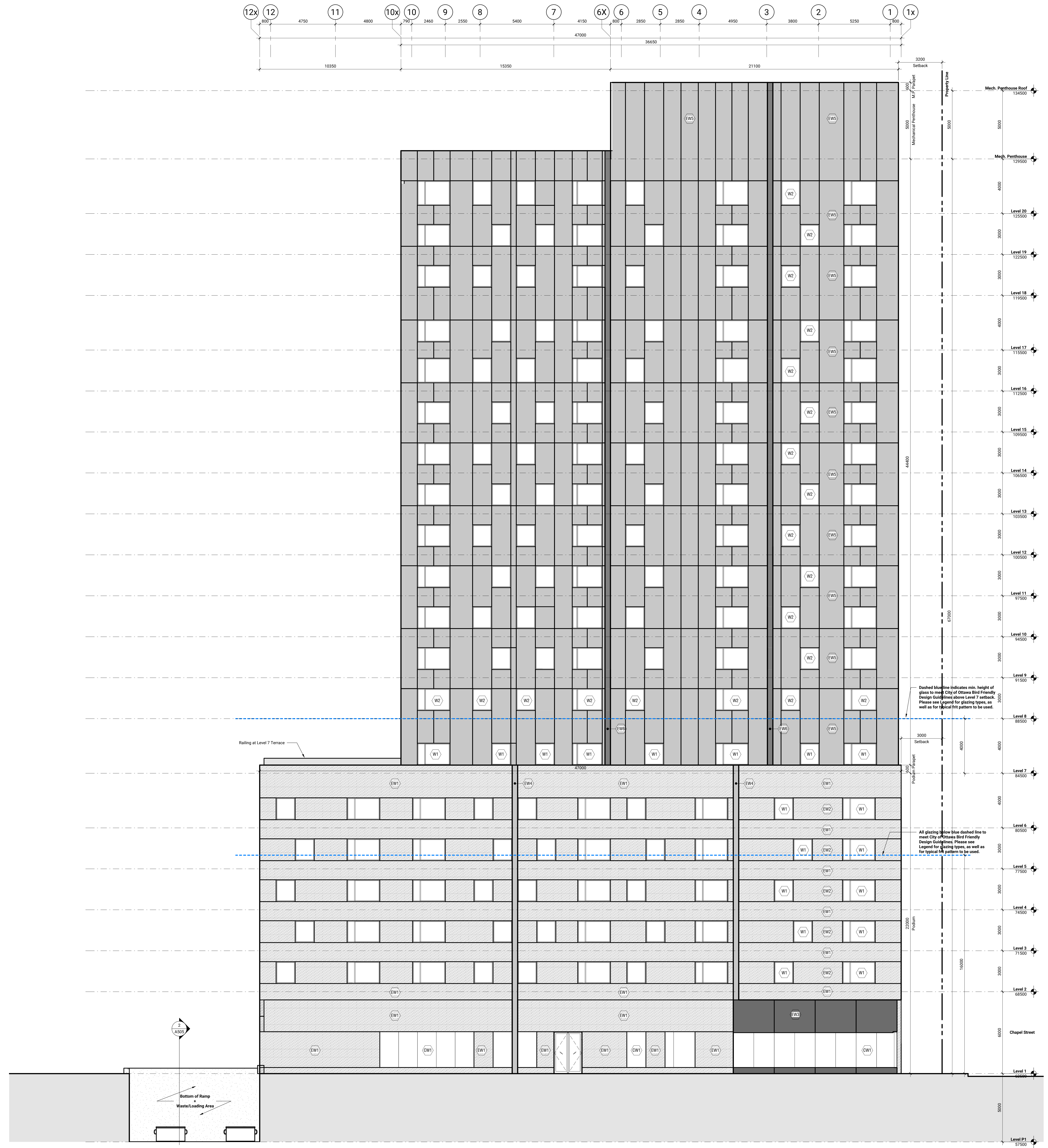
Approved by Planning & Site Plan Control
2023-03-22

ONTARIO ASSOCIATION OF ARCHITECTS
PROF. REG. NO. 156
1996

Contractor Must Check & Verify all Dimensions on the Job.
Do Not Scale Drawings.
All Drawings, Specifications and Related Documents are the Copyright Property of the Architect and Make No Representations, Reservation of Ownership, Warranties and Remedies in Part or in Whole to Third Parties Without the Written permission of the Architect.
This Drawing is Not to be Used for Construction Until Signed by the Architect.

OCH Friel Street / Chapel
200-201 Friel Street, Ottawa, ON K1P 1T1

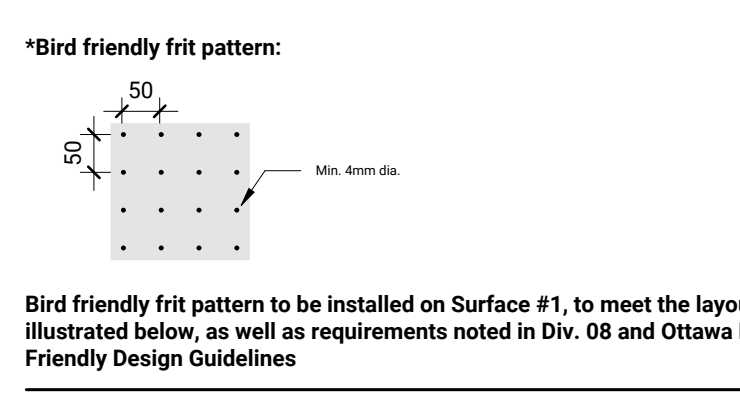
2023-03-22 11:42:32 AM C:\Users\mstange\OneDrive\Documents\Projects\A301\A301-Building\022_Arch\022_Arch.dwg



Issued

No.	Date	Description
1	22 MAR 2023	Issued for Rezoning and Site Plan Control

- Legend - Cladding Materials
- (EW1) Exterior Wall Type 1 - Masonry Cladding
 - (EW2) Exterior Wall Type 2 - Masonry/Precast Cladding
 - (EW3) Exterior Wall Type 3 - Sintered Stone Cladding
 - (EW4) Exterior Wall Type 4 - Coloured Masonry Cladding
 - (EW5) Exterior Wall Type 5 - Metal Panel Cladding
 - (EW6) Exterior Wall Type 6 - Coloured Metal Panel Cladding
 - (CW1) Curtain Wall Type 1 - Triple Glazed Curtain Wall Bird-Friendly Frit on Surface #1 to meet Ottawa Bird Friendly Design Guidelines*
 - (W1) Punched Window Type 1 - Triple Glazed Fiberglass Window Bird-Friendly Frit on Surface #1 to meet Ottawa Bird Friendly Design Guidelines*
 - (W2) Punched Window Type 2 - Triple Glazed Fiberglass Window Clear glazing without frit



NOT FOR CONSTRUCTION



Contractor Must Check & Verify all Dimensions on the Job.
Do Not Scale Drawings.
All Drawings, Specifications and Related Documents are the Copyright Property of the Architect and Make No Representations, Warranties or Guarantees of Accuracy, Completeness or Reliability in Part or in Whole in Furtherance of the Architect's Professional Services.
This Drawing is Not to be Used for Construction Until Signed by the Architect.

OCH Friel Street / Chapel
200-201 Friel Street, Ottawa, ON K1P 1Y1

2023-03-21 11:58:09 AM C:\Users\mstange\OneDrive\Documents\A303\A303\Building Elevation\A303_South_Elevation.dwg