

PART OF LOT 5 CONCESSION 11 Geographic Township of Cumberland CITY OF OTTAWA Surveyed by Annis, O'Sullivan, Vollebek Ltd.

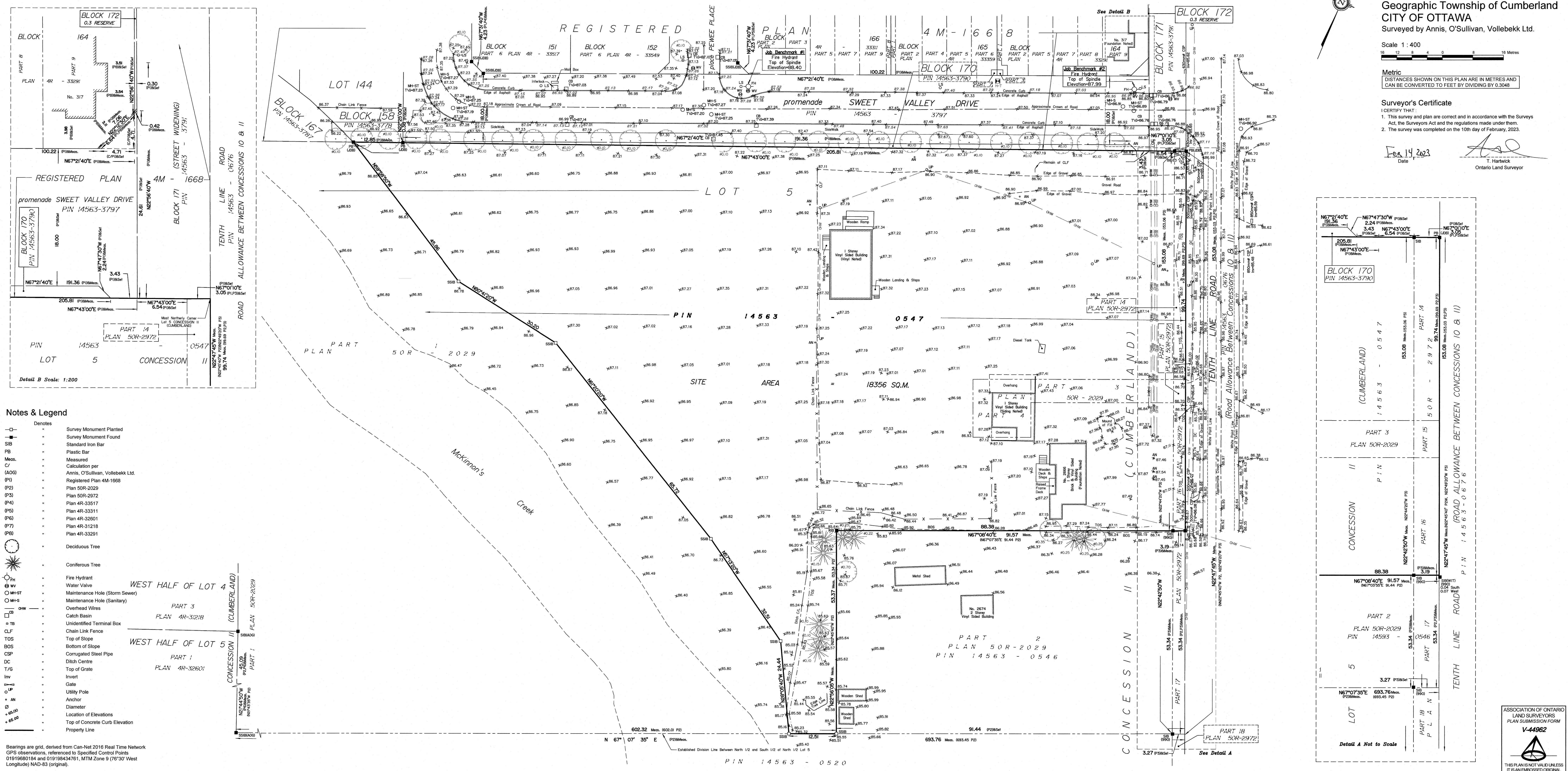
Scale 1:400 16 12 8 4 0 8 16 Metres

Metric DISTANCES SHOWN ON THIS PLAN ARE IN METRES AND CAN BE CONVERTED TO FEET BY DIVIDING BY 0.3048

Surveyor's Certificate

I CERTIFY THAT: 1. This survey and plan are correct and in accordance with the Surveys Act, the Surveyors Act and the regulations made under them. 2. The survey was completed on the 10th day of February, 2023.

Feb 14 2023 Date T. Hartwick Ontario Land Surveyor



Notes & Legend table with symbols for Denotes, Survey Monument Planted, Standard Iron Bar, Plastic Bar, Measured Calculation per, Registered Plan 4M-1668, etc.

Bearings are grid, derived from Can-NET 2016 Real Time Network GPS observations, referenced to Specified Control Points 01919680184 and 019198434761, MTM Zone 9 (76°30' West Longitude) NAD-83 (original).

Topographic data was collected under Winter Conditions. Snow cover and ice preclude determining location and elevation of some topographic data that is otherwise visible.

ELEVATION NOTES 1. Elevations shown are geodetic and are referred to the CGVD28 geodetic datum. 2. It is the responsibility of the user of this information to verify that the job benchmark has not been altered or disturbed and that it's relative elevation and description agrees with the information shown on this drawing.

UTILITY NOTES 1. This drawing cannot be accepted as acknowledging all of the utilities and it will be the responsibility of the user to contact the respective utility authorities for confirmation. 2. Only visible surface utilities were located. 3. A field location of underground plant by the pertinent utility authority is mandatory before any work involving breaking ground, probing, excavating etc.

