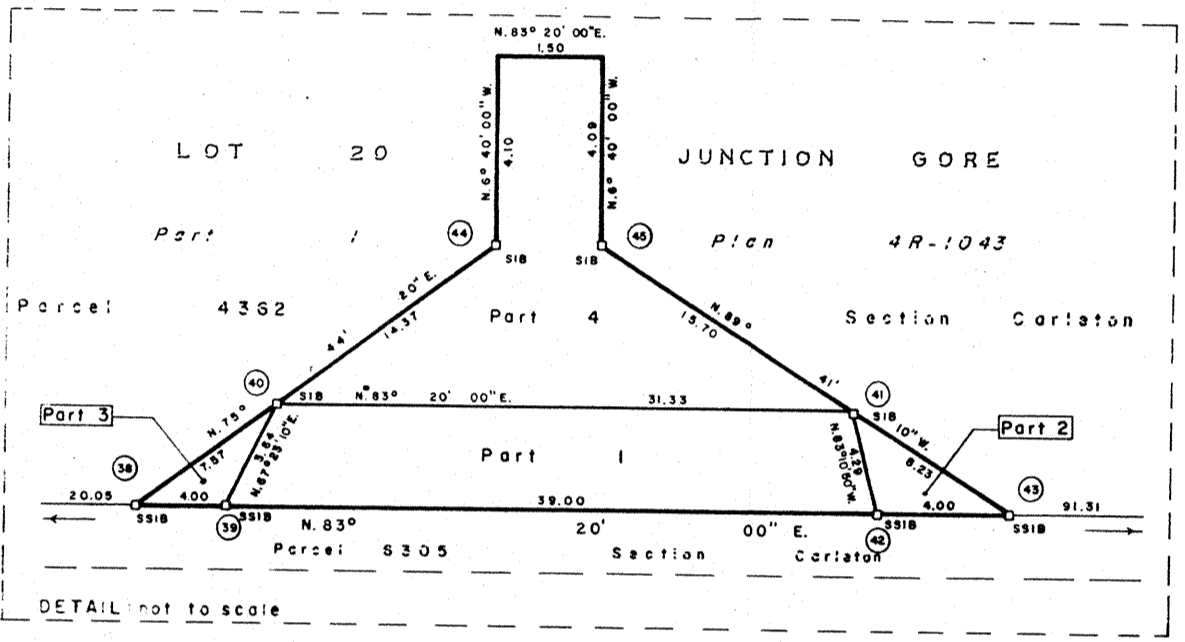


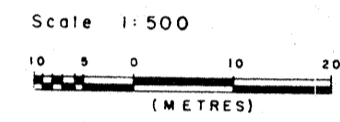
SCHEDULE					R.M.O.C. OFFICE USE ONLY			
Part	Parcel No.	Lot	Con.	Remarks	Owner	* Area	Acquired by	Dedicated by
1	Part of			Part of		35.2 m ²		
2	Parcel 4362	20	Junction	Part 1		2.0 m ²		
3	Section		Gore	Plan 4R-1043		2.0 m ²		
4	Carleton					37.4 m ²		

PLAN 4R-4303
Received and Deposited
3 JANUARY 1985
J. Coyle Dep
Land Registrar for the Land
Titles Division of
Ottawa-Carleton No. 4

OC-4435



PLAN OF SURVEY OF
PARTS OF LOT 20
JUNCTION GORE
Formerly in the Township of Gloucester
Now in the
CITY OF OTTAWA
REGIONAL MUNICIPALITY OF OTTAWA-CARLETON



Scale 1:500
Surveyed by J.J. Brun O.L.S.
1984

Notes and Legend
Bearings are astronomic, derived from the computed bearing of N. 83° 30' 17\"/>

Distances shown hereon are grid distances; combined scale factor being 0.999942
S.U. denotes source unknown
Wit. " witness
O " a point previously co-ordinated on Plan 4R-1043

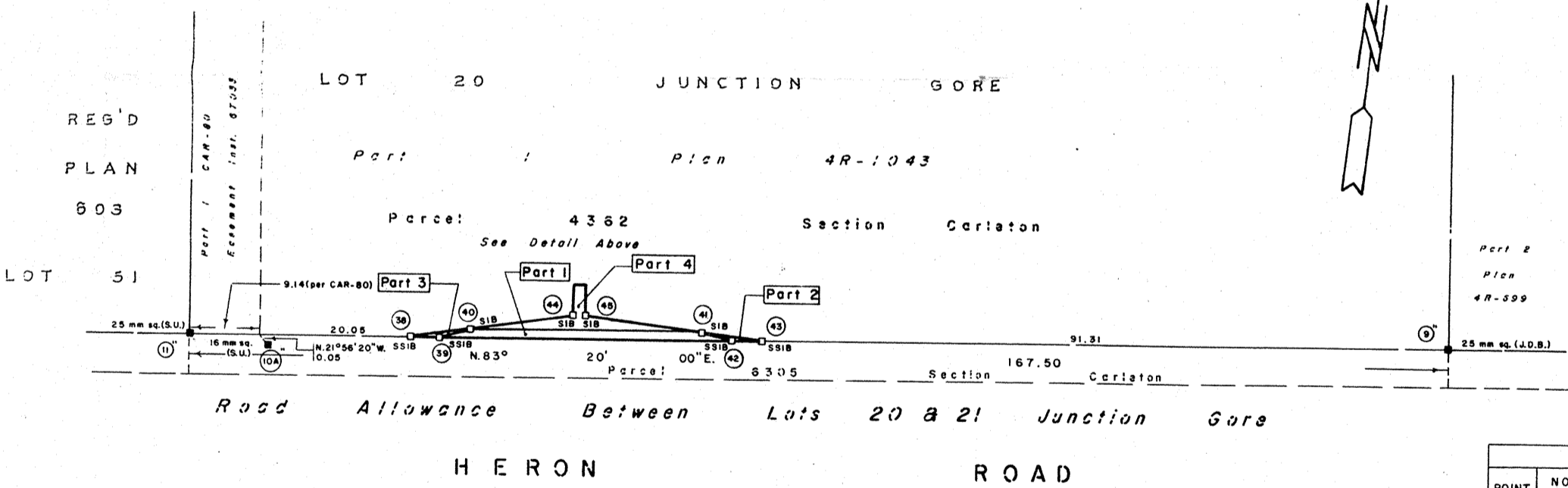
Surveyor's Certificate
I certify that:
1. This survey and plan are correct, and in accordance with *The Surveys Act* and *The Land Titles Act* and the regulations made thereunder.
2. The survey was completed on the 16th day of December, 1984.

December 17th 1984
J.J. Brun
Ottawa, Ontario
Ontario Land Surveyor

I require this plan to be deposited under *The Land Titles Act*.
21 DECEMBER 1984
P. Dewhirst
P. Dewhirst O.L.S.
On Behalf of the Regional Municipality of Ottawa-Carleton
EXAMINER'S APPROVAL
Approved Jan 5, 1985
Asst. Examiner of Surveys

METRIC
DISTANCES SHOWN ON THIS PLAN ARE IN METRES AND CAN BE CONVERTED TO FEET BY DIVIDING BY 0.3048.

"CAUTION: THIS PLAN IS NOT A PLAN OF SUBDIVISION WITHIN THE MEANING OF THE PLANNING ACT."



POINT NUMBER	NORTHING	EASTING	POINT NUMBER	NORTHING	EASTING
9"	6 748.06	924.62	41	6 737.51	825.70
10A"	729.64	767.35	42	737.00	829.96
11"	728.62	758.25	43	737.46	833.93
38	732.01	787.25	44	737.41	808.51
39	732.47	791.22	45	737.59	810.00
40	733.87	794.58			

THE REGIONAL MUNICIPALITY OF
OTTAWA - CARLETON
SURVEY BRANCH
SURVEY BY: O.F./E.C.
DRAWN BY: M.C.
CHECKED BY: J.J.B.
FILE No. 592 (L429280)
DRAWING No. 8738

32 30 28 26 24 22 20 18 16 14 12 10 8 6 4 2 0 2 4 6 8 10 12 14 16 18 20 22 24 26 28 30 32

24x R 04 R 04803 03344
FRAME 01 OF 01 PART 01 OF 01 SHEET 01 OF 01

Ministry of Consumer and Commercial Relations
Ministère de la Consommation et du Commerce
Registrar General
Land Registry Office