

TOPOGRAPHIC SKETCH OF
1900-2000 City Park Drive being
PART OF BLOCK 2
REGISTERED PLAN 4M-648
CITY OF OTTAWA
Prepared by Annis, O'Sullivan, Vollebek Ltd.
Field work completed March 3, 2023

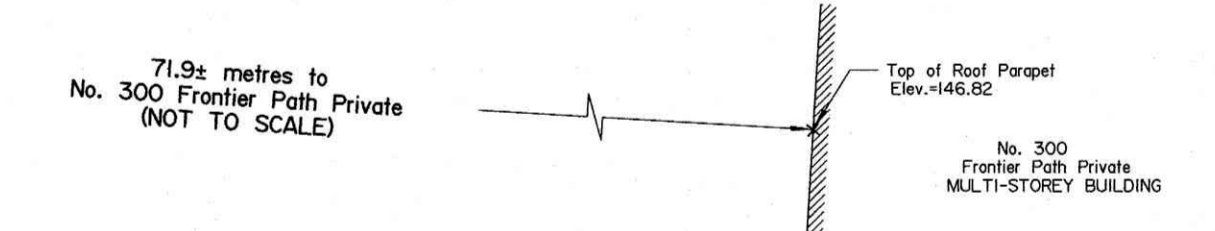
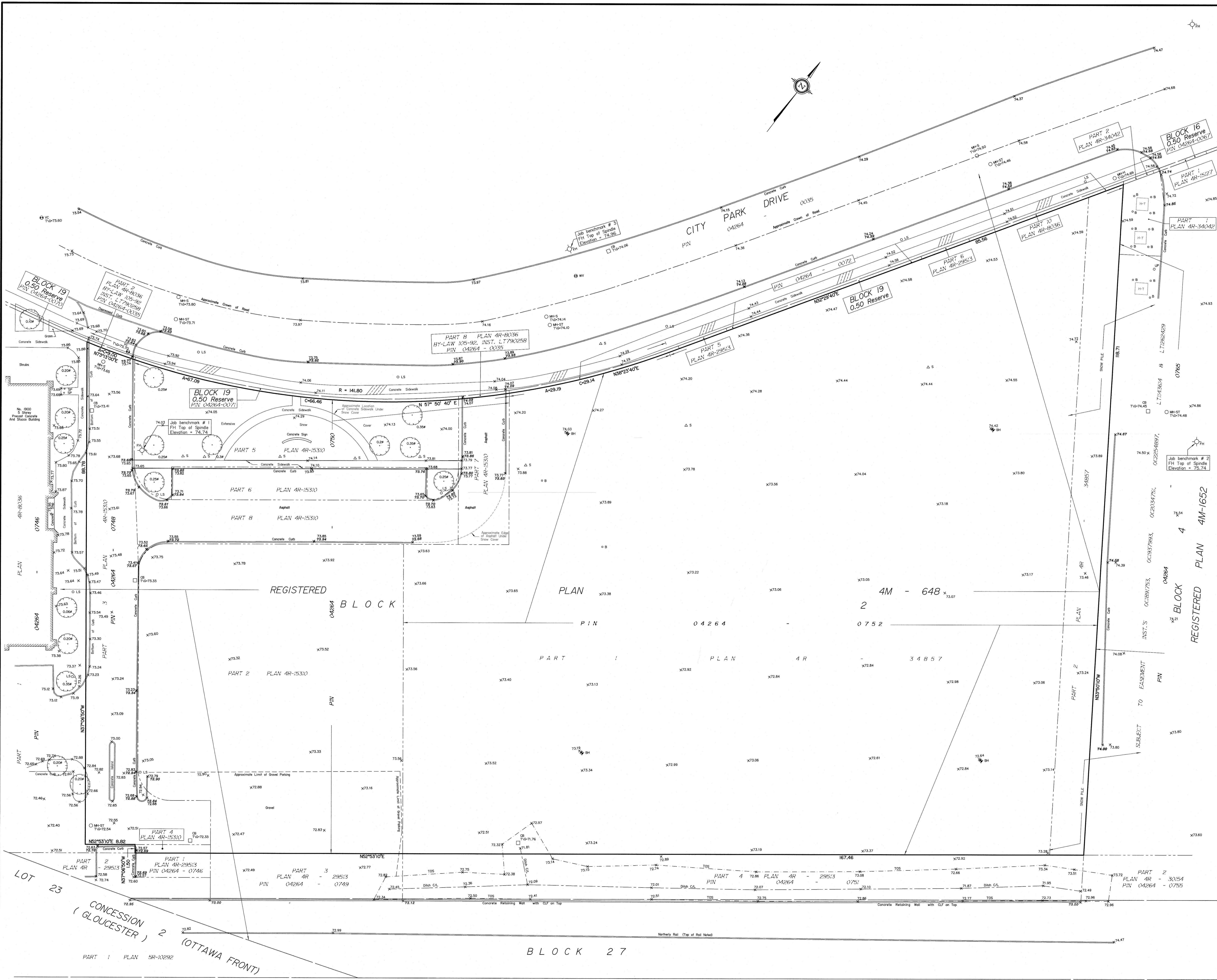
Scale 1:250
1 2.5 5 7.5 10 Metres

Metric
DISTANCES SHOWN ON THIS PLAN ARE IN METRES AND
CAN BE CONVERTED TO FEET BY DIVIDING BY 0.3048

March 10 2023
Date
E.H. Herweyer O.L.S.

Notes & Legend

- Denotes
- Deciduous Tree
 - Fire Hydrant
 - Water Valve
 - Maintenance Hole (Storm Sewer)
 - Maintenance Hole (Sanitary)
 - Maintenance Hole (Hydro)
 - Valve Chamber (Watermain)
 - Catch Basin
 - Light Standard
 - Hydro Transformer
 - Top of Slope
 - Centreline
 - Diameter
 - Location of Elevations
 - Top of Concrete Curb / Retaining Wall Elevation
 - Rollard
 - Sign
 - Borehole
 - Water Stand Post
 - Chain Link Fence



Bearings are grid, derived from Can-Net 2016 Real Time Network GPS observations, MTM Zone 9 (76°30' West Longitude) NAD-83 (original).

ELEVATION NOTES
1. Elevations shown are geoidic and are referred to the CGVD28 geoidic datum, derived from control monument No. 019680132 having an elevation of 66.127 metres.
2. It is the responsibility of the user of this information to verify that the job benchmark has not been altered or disturbed and that its relative elevation and description agrees with the information shown on this drawing.

Topographic data was collected under Winter Conditions. Snow cover and ice preclude determining location and elevation of some topographical data that is otherwise visible.

SITE AREA = 16431 m²

BOUNDARY INFORMATION COMPILED FROM PLANS
4R-34857, 4R-29513 & 4R-15310

BLOCK 27
REGIONAL ROAD No. 174 (Formerly THE KING'S HIGHWAY No. 17)
DEPOSITED PLAN 6L54053 (HIGHWAYS PLAN P-3017-9)

LOT 23
CONCESSION (GLOUCESTER) 2 (OTTAWA FRONT)
PART 1 PLAN 5R-10292