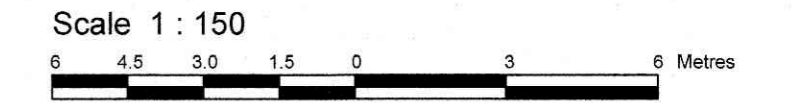


TOPOGRAPHICAL PLAN OF SURVEY

PART OF LOT 31  
CONCESSION 1 (OLD SURVEY)  
Geographic Township of Cumberland  
CITY OF OTTAWA  
Surveyed by Annis, O'Sullivan, Vollebek Ltd.



Metric  
DISTANCES SHOWN ON THIS PLAN ARE IN METRES AND  
CAN BE CONVERTED TO FEET BY DIVIDING BY 0.3048

Surveyor's Certificate

I CERTIFY THAT:  
1. This survey and plan are correct and in accordance with the Surveys  
Act and the Surveyors Act and the regulations made under them.  
2. The survey was completed on the 25th day of April, 2022.

May 27, 2022 Date  
E. H. Herweyer  
Ontario Land Surveyor

Notes & Legend

- Denotes
- Survey Monument Planted
  - Survey Monument Found
  - SIB Standard Iron Bar
  - SSIB Short Standard Iron Bar
  - IB Iron Bar
  - CC Cut Cross
  - WIT Witness
  - Mess. Measured
  - Acc. Accepted
  - (AOS) Annis, O'Sullivan, Vollebek Ltd.
  - (PI) Plan 4R-33157
  - FH Fire Hydrant
  - MH-ST Maintenance Hole (Storm Sewer)
  - MH-S Maintenance Hole (Sanitary)
  - MH Maintenance Hole (Unidentified)
  - T/G Top of Grate
  - UP Utility Pole
  - AN Anchor
  - AC Air Conditioner
  - CB Catch Basin Inlet
  - T/G Top of Grate
  - SRW Stone Retaining Wall
  - TOS Top of Slope
  - BOS Bottom of Slope
  - ∅ Diameter
  - +65.00 Location of Elevations
  - +65.00\* Top of Concrete Curb Elevation
  - C/L Centreline
  - Property Line
  - Deciduous Tree

ASSOCIATION OF ONTARIO  
LAND SURVEYORS  
PLAN SUBMISSION FORM  
V-25515

THIS PLAN IS NOT VALID UNLESS  
IT IS AN EMBOSSED ORIGINAL  
COPY ISSUED BY THE SURVEYOR  
In accordance with  
Regulation 1026, Section 22 (9).

Bearings are grid, derived from the northerly limit of St. Joseph Boulevard shown to be N82°08'30"E on Plan 4R-33157 and are referred to the Central Meridian of MTM Zone 9 ( 76°30' West Longitude ) NAD-83 (original).

ELEVATION NOTES

1. Elevations shown are geodetic and are referred to the CGVD28 geodetic datum.  
2. It is the responsibility of the user of this information to verify that the job benchmark has not been altered or disturbed and that its relative elevation and description agrees with the information shown on this drawing.

UTILITY NOTES

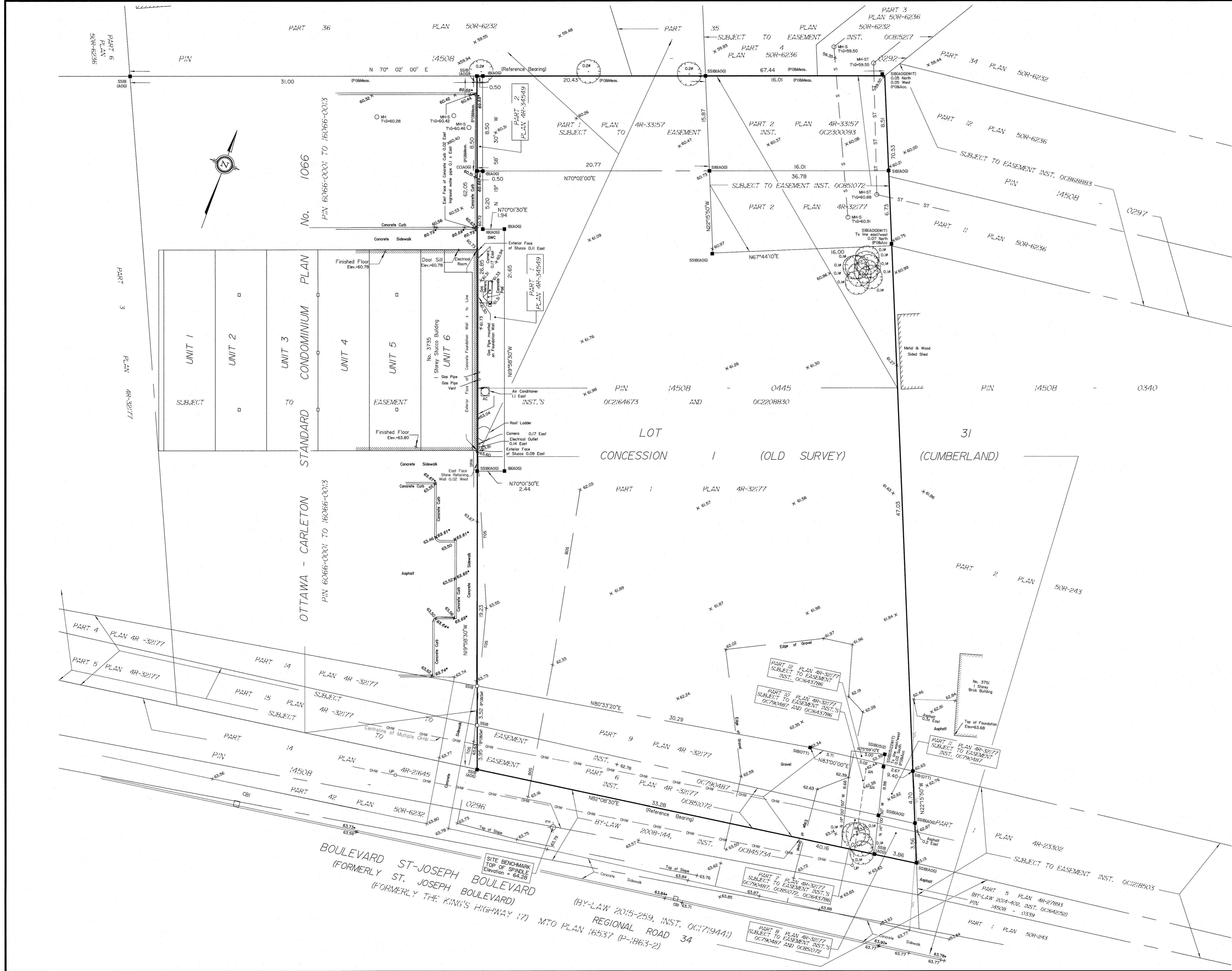
1. This drawing cannot be accepted as acknowledging all of the utilities and it will be the responsibility of the user to contact the respective utility authorities for confirmation.  
2. Only visible surface utilities were located.  
3. A field location of underground plant by the pertinent utility authority is mandatory before any work involving breaking ground, probing, excavating etc.

© Annis, O'Sullivan, Vollebek Ltd. 2022. THIS PLAN IS PROTECTED BY COPYRIGHT

**ANNIS, O'SULLIVAN, VOLLEBEK LTD.**  
14 Concourse Gate, Suite 500  
Nepean, Ont. K2E 7S6  
Phone: (613) 727-0850 / Fax: (613) 727-1079  
Email: nepean@annisovl.com

Ontario  
Land Surveyors

38 No. E-2505-22 33890767 Const. Ins. PL131 CI OS CU T F LD



V:\MAPPING\2022\22\_1087\077 Canada Reg. 3145 St. Joseph Blvd., Toronto, Ont. M5S 2E2 38890767 Const. Ins. PL131 CI OS CU T F LD