

CONSULTANTS

ARCHITECTS  
**CSV ARCHITECTS**

sustainable design - conception écologique

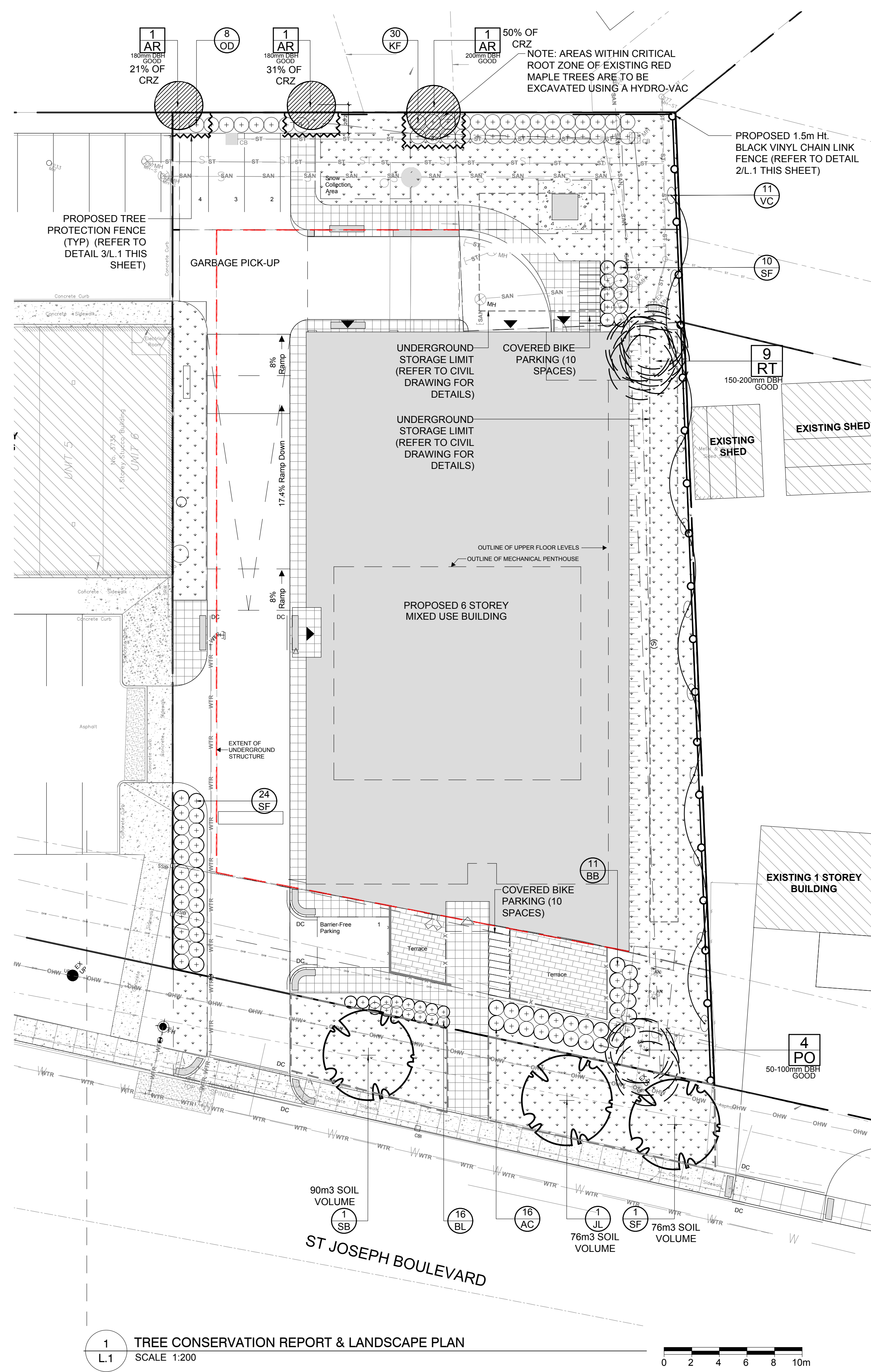
613.564.8118  
www.csv.ca 190 O'Connor Street, Suite 100  
Ottawa, Ontario K2P 2K3

SURVEYORS  
ANNIS, O'SULLIVAN, VOLLEBEKK LTD.

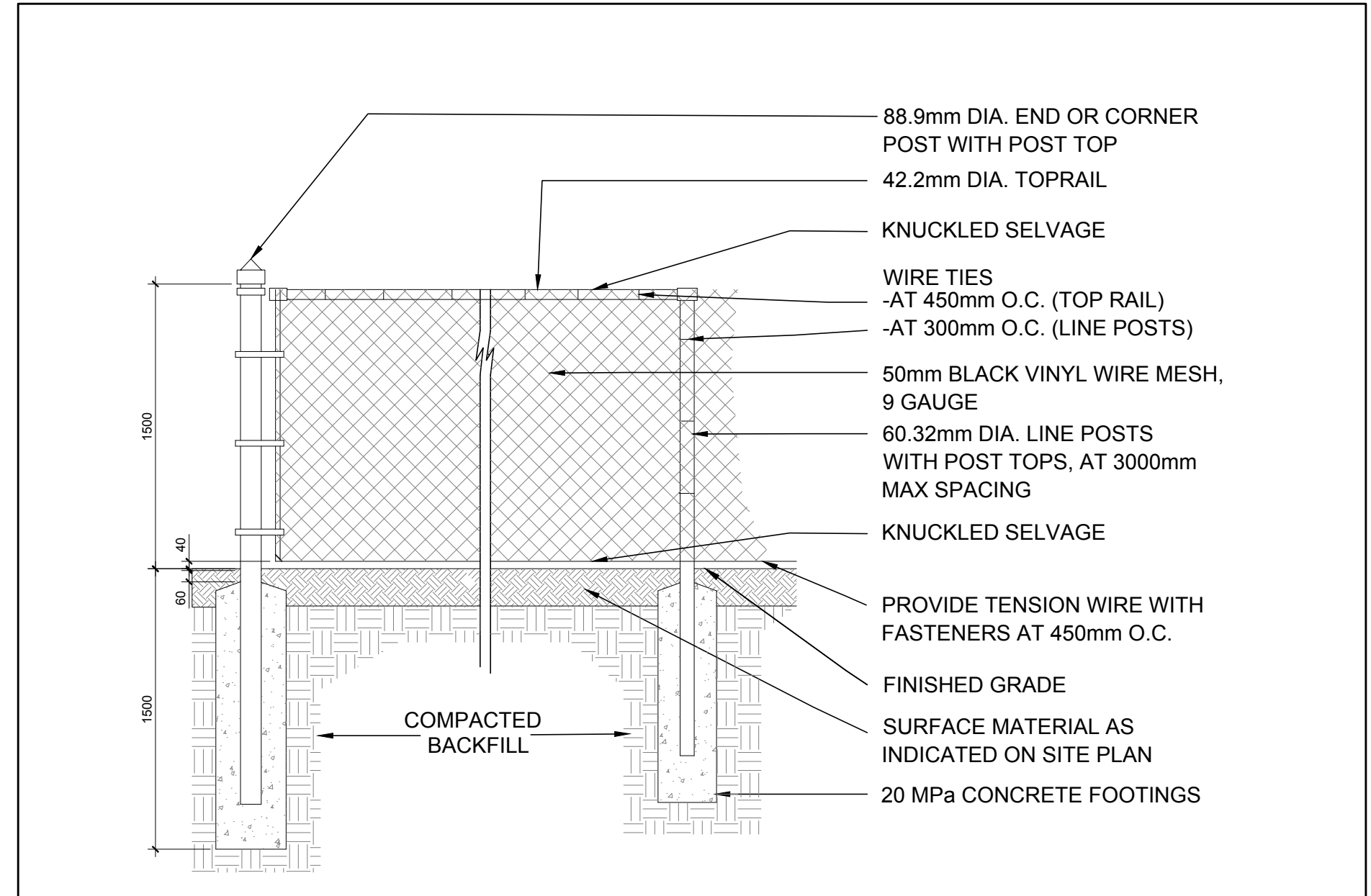
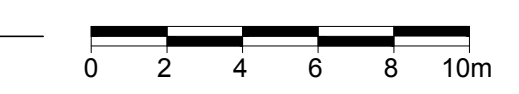
14 Concourse Gate, Suite 500  
Nepean, Ont. K2E 7S6  
Phone: (613) 727-0850 / Fax: (613) 727-1079  
Email: nepean@ovl.com

**LEGEND**

- EXISTING TREE TO REMAIN
- EXISTING TREE TO BE REMOVED
- PROPOSED DECIDUOUS TREE
- PROPOSED SHRUBS / PERENNIALS
- PROPOSED VINE
- PROPOSED SOD
- PROPOSED PRECAST CONCRETE PAVERS
- PROPOSED TREE PROTECTION FENCE
- PROPOSED 1.5m BLACK VINYL CHAIN LINK FENCE

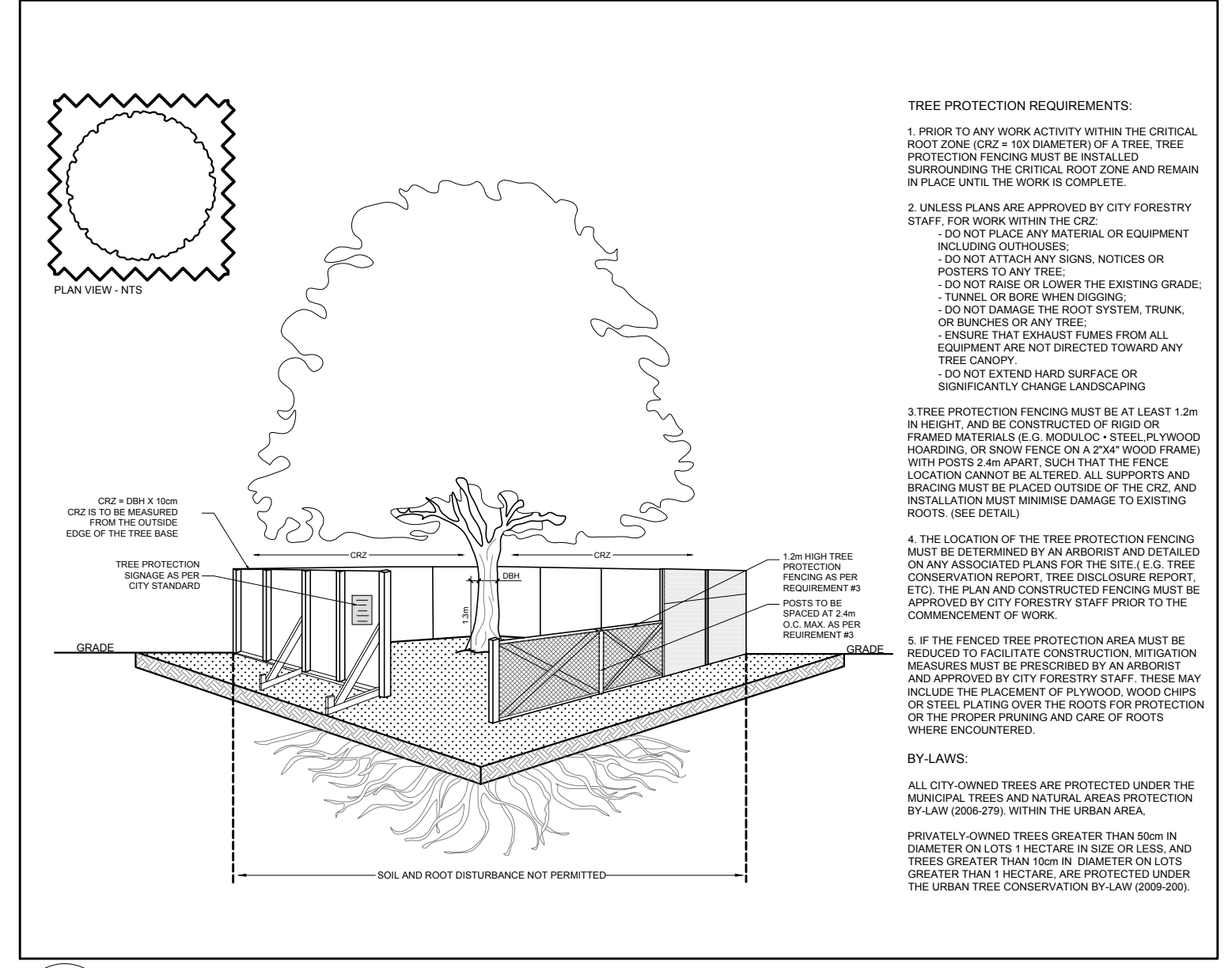


1 TREE CONSERVATION REPORT & LANDSCAPE PLAN  
SCALE: 1:200



2 1.5m Ht. BLACK VINYL CHAIN LINK FENCE  
SCALE: NTS

- GENERAL NOTES:**
- It is the responsibility of the appropriate contractor or official to report any errors, omissions or discrepancies on this plan with actual site conditions to the Landscape Architect before proceeding with construction.
  - The contractor is to notify all utility companies and authorities prior to any excavation and ascertain locations of underground services.
  - The contractor is to reinstaate all areas and items damaged as a result of construction activity.
  - The contractor is to comply with all pertinent codes and by-laws.
  - The contractor is to maintain a positive surface run-off throughout the entire construction period.
  - The Landscape Architect is not responsible for subsurface conditions.
  - The contractor is to identify all existing trees to remain on site with the Landscape Architect prior to construction.
  - The contractor is to stake the proposed location of all plant material in conjunction with the Landscape Architect prior to excavation.
  - Minimum distances for selected deciduous trees are as follows:
    - Building Foundations 7.5m
    - Sidewalks 1.5m
    - Public Streets 2.5m
    - Underground Infrastructure 2.0m
  - All trees within 1m of underground utility trenches are to be excavated by hand.
  - Remove all protective wrapping from tree trunks after installation.
  - Staking of trees shall only be performed if necessary.
  - Ensure that mulch is pulled back a min. distance of 75mm from base of tree trunk.



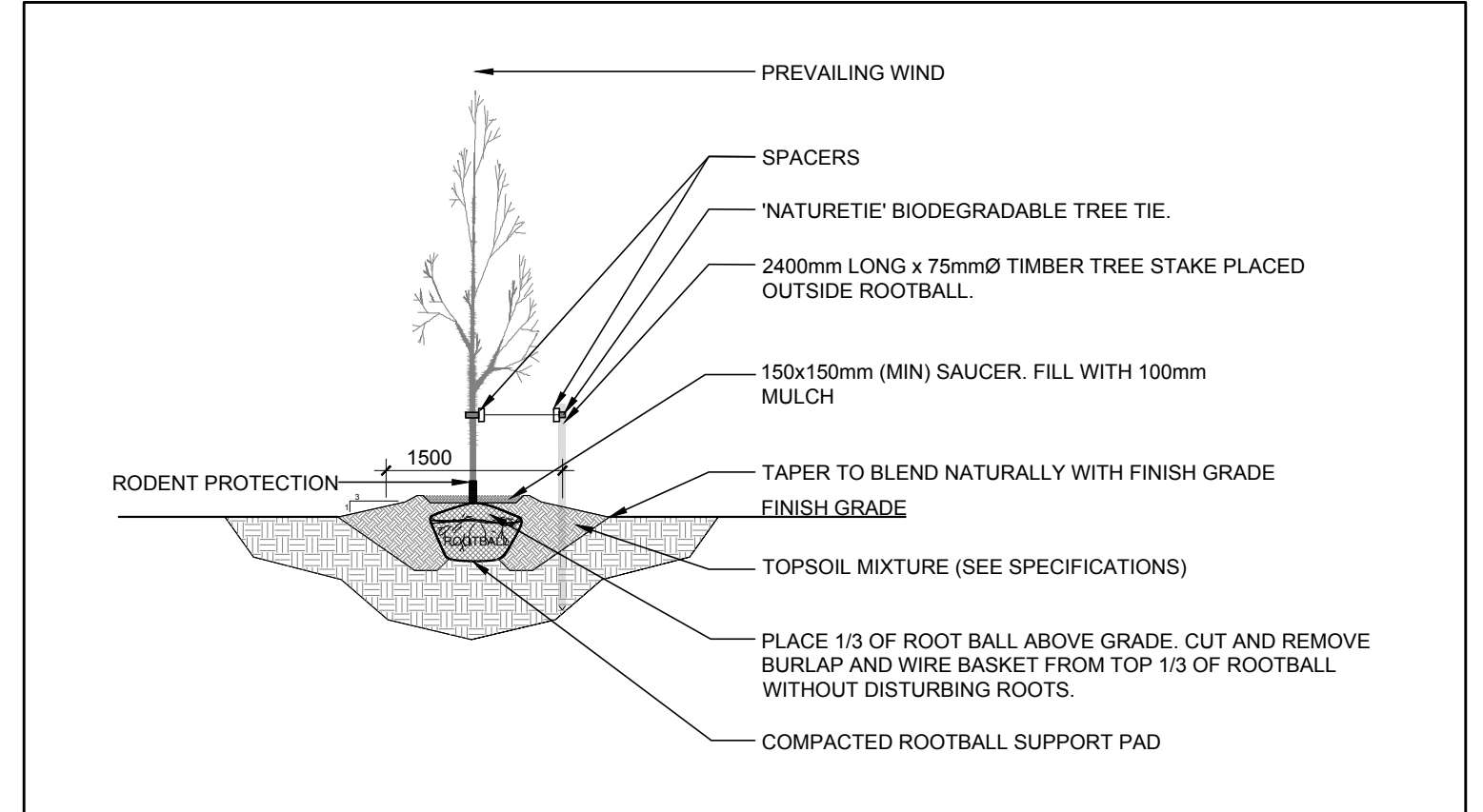
3 TREE PROTECTION FENCING  
SCALE: NTS

**EXISTING TREE LIST** QTY KEY

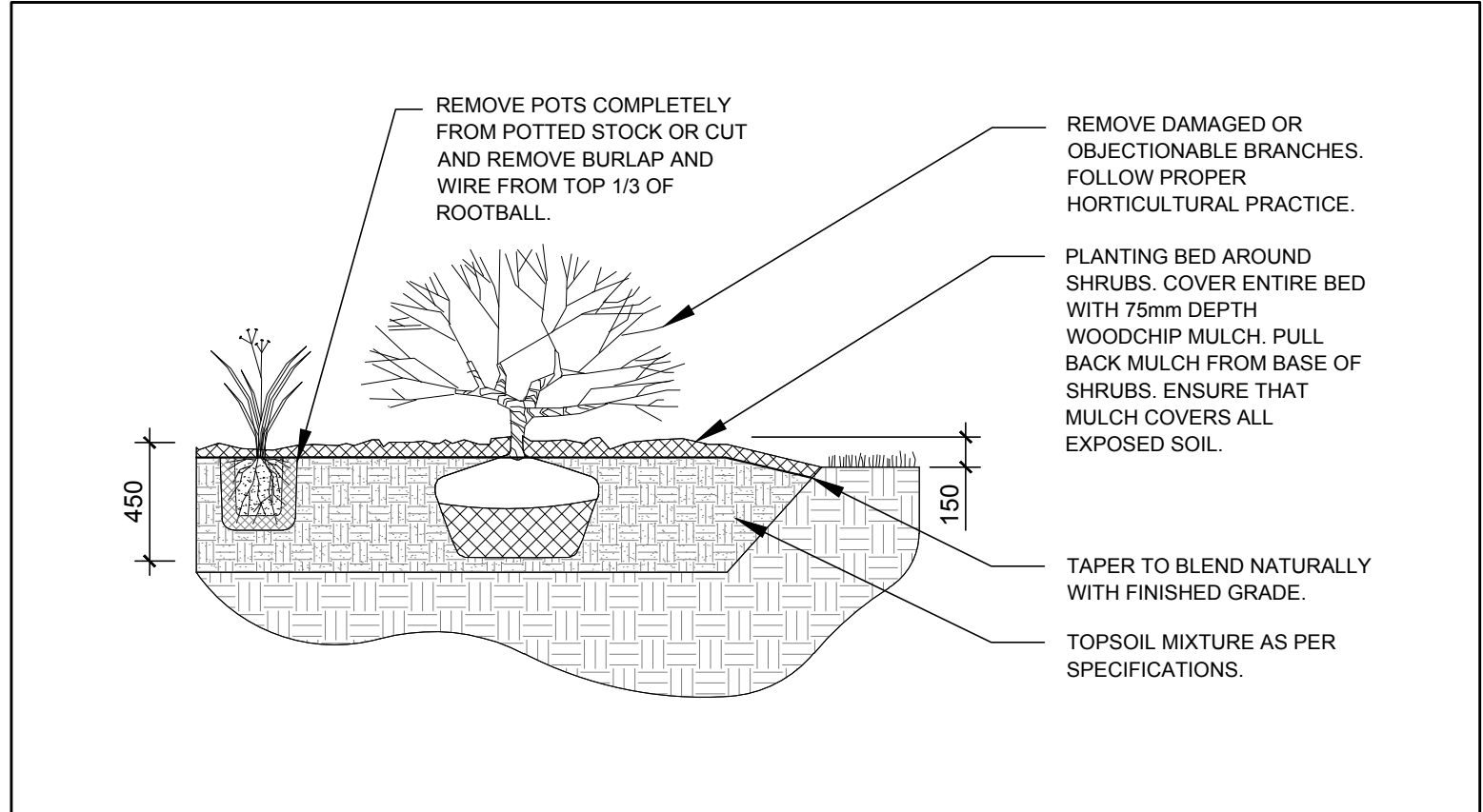
KEY	BOTANICAL NAME	COMMON NAME	SIZE	OWNERSHIP	CONDITION	ACTION
<b>DECIDUOUS TREES</b>						
3-AR	<i>Acer rubrum</i>	Red Maple	180-200mm DBH	530 Lacolle Way	GOOD	TO REMAIN
4-PO	<i>Populus deltoides</i>	Eastern Cottonwood	50-100mm DBH	3745 St. Joseph BLVD	GOOD	TO BE REMOVED
9-RT	<i>Rhus typhina</i>	Staghorn Sumac	150-200mm DBH	3745 St. Joseph BLVD	GOOD	TO BE REMOVED

**PROPOSED PLANT LIST** QTY KEY

KEY	QTY	BOTANICAL NAME	COMMON NAME	SIZE	CONDITION	REMARKS
<b>TREES</b>						
JL	1	<i>Syringa reticulata</i>	Japanese Tree Lilac	50mm ø	B&B	Single leader
SB	1	<i>Amelanchier canadensis</i>	Serviceberry	50mm ø	B&B	Single leader
SF	1	<i>Amelanchier laevis</i> 'JFS-ARB'	Spring Flurry Serviceberry	50mm ø	B&B	Single leader
<b>SHRUBS</b>						
AC	16	<i>Ribes alpinum</i>	Alpine Currant	600mm ht.	Potted	
BB	11	<i>Euonymus alatus</i> 'Compactus'	Dwarf Burning Bush	600mm ht.	Potted	800mm o.c.
SF	34	<i>Sorbaria sorbifolia</i> 'Sem'	Sem False Spirea	600mm ht.	Potted	1000mm o.c.
<b>PERENNIALS &amp; ORNAMENTAL GRASSES</b>						
BL	16	<i>Leymus arenarius</i> 'Blue Dune'	Blue Dune Grass	250mm pot	Potted	800mm o.c.
KF	30	<i>Calamagrostis</i> 'Karl Foerster'	Feather Reed Grass	250mm pot	Potted	800mm o.c.
OD	8	<i>Calamagrostis</i> 'Overdam'	Overdam Grass	250mm pot	Potted	800mm o.c.
<b>VINES</b>						
VC	11	<i>Parthenocissus quinquefolia</i>	Virginia Creeper	1 gallon pot	Potted	Train up fence



4 DECIDUOUS TREE PLANTING  
SCALE: NTS



5 SHRUB / ORNAMENTAL GRASS / PERENNIAL PLANTING  
SCALE: NTS

**JAMES B. LENNOX & ASSOCIATES INC.**  
LANDSCAPE ARCHITECTS  
3332 CARLING AVE. OTTAWA, ONTARIO K2H 5A8  
Tel. (613) 722-8168 Fax. (613) 343-3942

PROJECT  
**PROPOSED DEVELOPMENT**  
3745 ST. JOSEPH BLVD, OTTAWA ON

DRAWING  
TREE CONSERVATION REPORT & LANDSCAPE PLAN

	SCALE	AS SHOWN
	START DATE	MARCH 2023
	PROJECT NO.	23MIS2327
	DRAWING NO.	L.1

PROJECT NORTH

D07-12-23-0059