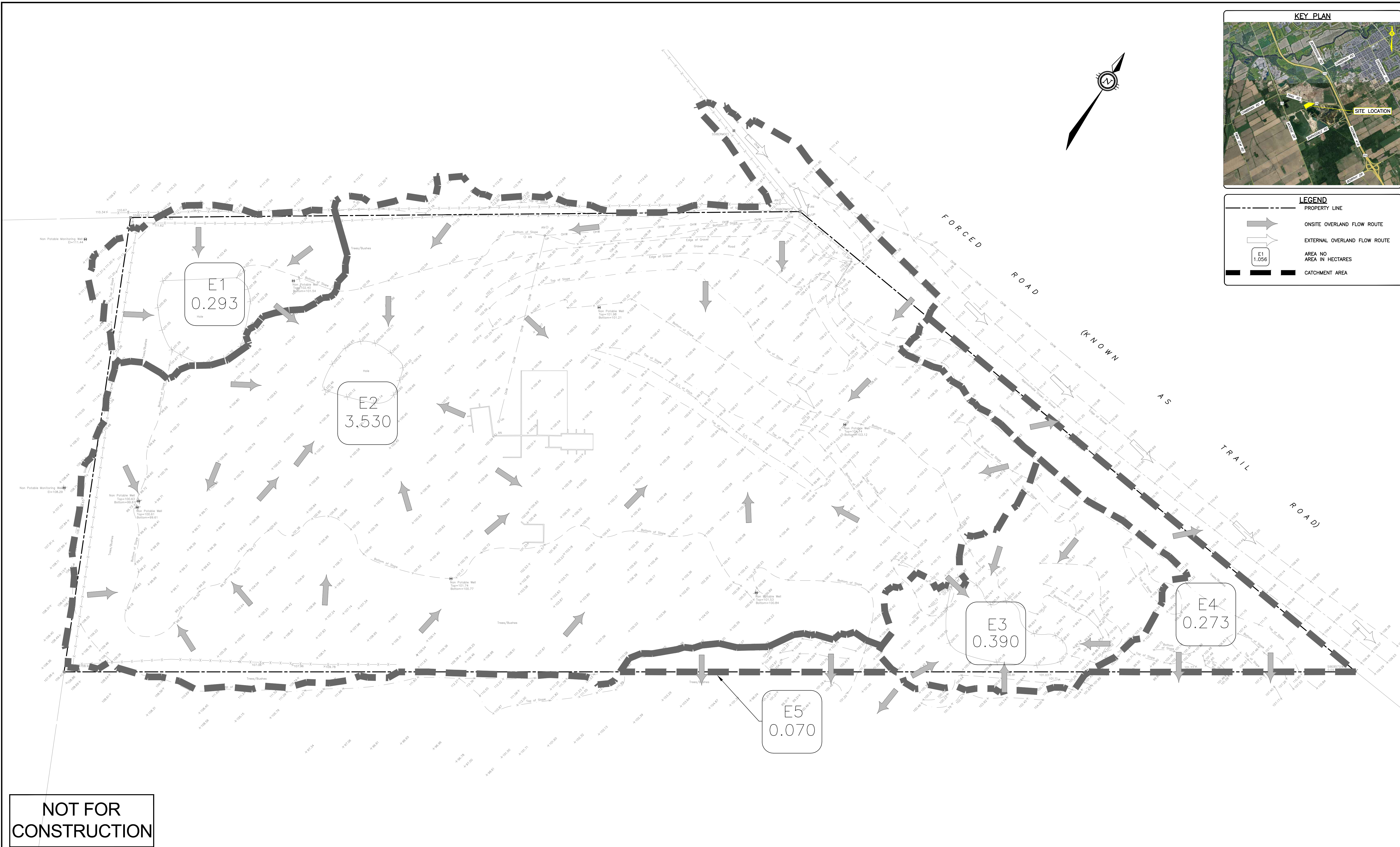


LEGEND

- PROPERTY LINE
- ONSITE OVERLAND FLOW ROUTE
- EXTERNAL OVERLAND FLOW ROUTE
- E1 1.056 AREA NO. AREA IN HECTARES
- █ CATCHMENT AREA



NOT FOR CONSTRUCTION

CAUTION
THE POSITION OF ALL POLE LINES, CONDUITS, WATERMAINS, SEWERS AND OTHER UNDERGROUND AND OVERGROUND UTILITIES AND STRUCTURES IS NOT NECESSARILY SHOWN ON THE CONTRACT DRAWINGS, AND WHERE SHOWN, THE ACCURACY OF THE POSITION OF SUCH UTILITIES AND STRUCTURES IS NOT GUARANTEED. BEFORE STARTING WORK, DETERMINE THE EXACT LOCATION OF ALL SUCH UTILITIES AND STRUCTURES AND ASSUME ALL LIABILITY FOR DAMAGE TO THEM.

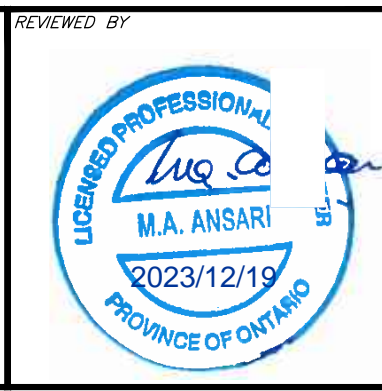
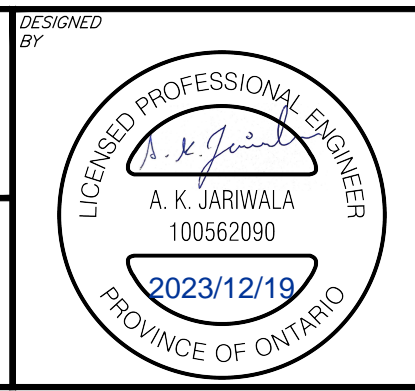
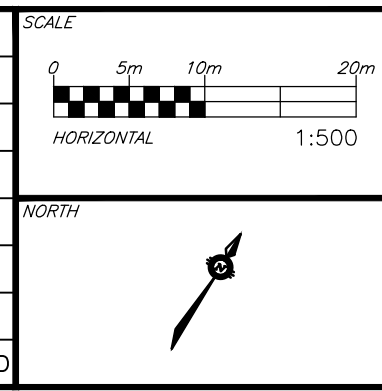
JOB BENCH MARK
CP IN UTILITY POLE ELEVATION = 111.79

TOPOGRAPHIC INFORMATION
PART OF LOT 8, CONCESSION 4 (RIDEAU FRONT), GEOGRAPHIC TOWNSHIP OF NEPEAN, CITY OF OTTAWA.

Bearing Note
Bearings hereon are grid bearings derived from the Can-Net Real Time Network and are referred to the Central Meridian of MTM Zone 9 (76°30' West Longitude) Nad-83 (Original).

Elevation Notes
Elevations shown are geodetic and are referred to Geodetic Datum CGVD-1928 :1978. (Monument No. 19770866)

REV	REVISION DESCRIPTION	DATE	BY	APPD
3	RE-ISSUED FOR SPA	19/12/23	AGJ	AA
2	ISSUED FOR SPA	23/06/23	AJ	AA
1	ISSUED FOR CLIENT REVIEW	20/10/22	AJ	AA



CLIENT
DRAIN-ALL LTD
3385 HAWTHORNE ROAD, OTTAWA, ON.
K1G 4G2 613.739.1070

exp.
exp Services Inc.
1-813-688-1899 | +1-613-225-7330
2025 Queenway Drive, Unit 100
Ottawa, ON K2B 8H6
Canada
www.exp.com

• BUILDINGS • EARTH & ENVIRONMENT • ENERGY •
• INDUSTRIAL • INFRASTRUCTURE • SUSTAINABILITY •

BASEPLAN	PROJECT
AJ	ENGINEERING SERVICES FOR
AJ	4380 TRAIL ROAD,
AA	OTTAWA, ONTARIO.
AJ	PRE-DEVELOPMENT
AA	CATCHMENTS
AA	

PROJECT No.	DATE	DRAWING No.
OTT-21023795-A0	27/04/2022	C400

I:\Projects\21023795-A0\21023795-A0.dwg
 User: jw1023795
 Date: 2023/12/19 11:09:23
 Plot: 2023/12/19 11:09:23
 Plotter: HP DesignJet T114
 Plot Style: hpl-114.ctb
 Plot Range: Full
 Plot Scale: 1:500
 Plot Orientation: Landscape
 Plot Color: Black
 Plot Lineweight: 0.5
 Plot Linetype: Solid
 Plot Font: Arial, 10
 Plot Title: PRE-DEVELOPMENT CATCHMENTS
 Plot Date: 27/04/2022
 Plot Drawing No: C400

#7777