

STATION	FINISHED GRADE	TOP W/M	ITEM
0+000	68.65	66.65	127mmØ PVC CONNECTION TO EX. 127mmØ UCI
0+001.5	68.65	66.250	200mmØ x 127mmØ REDUCER
0+006	68.65	66.260	200mmØ x 200mmØ CROSS
0+012	68.65	66.250	1 1/2" HORIZONTAL BEND
0+017	68.70	66.300	1 1/2" HORIZONTAL BEND
0+023	68.76	66.360	200mmØ VALVE AND VALVE BOX
0+040	68.79	66.330	TOP OF PIPE
0+049.8	68.64	66.240	150mmØ FIRE HYDRANT TEE
0+071.3	68.63	64.230	200mmØ BUILDING WATER SERVICE
0+078.8	68.57	64.170	200mmØ VALVE AND VALVE BOX
0+082.5	68.59	64.190	150mmØ FIRE HYDRANT TEE
0+083.7	68.58	64.180	200mmØ x 127mmØ REDUCER
0+085.2	68.56	64.160	CONNECT TO EX. 127mmØ WITH 127mmØ x 127mmØ TEE

SEWER AND WATERMAIN CROSSING TABLE								
CROSSING	STM INV	STM OBV	SAN INV	SAN OBV	WTR TOP	WTR BTM	COMB INV	COMB OBV
▲	64.79(64.69) ±	65.39(65.49) ±	64.12	64.42				
▲	65.27(65.17) ±	65.80(65.90) ±	63.92	64.17				
▲	65.28(65.18) ±	65.81(65.91) ±			66.57	66.52	62.87(62.72) ±	64.07(64.22) ±
▲	65.42(65.33) ±	65.95(66.04) ±			66.57	66.52	62.82(62.67) ±	64.02(64.17) ±
▲	65.43(65.34) ±	65.96(66.05) ±	66.66	66.81				
▲					66.24	66.04	62.78(62.58) ±	63.98(64.18) ±
▲					66.12	65.92	64.46(64.36) ±	64.76(64.86) ±

* BRACKETS DENOTE ADJUSTED VALUE WITH CONCRETE PIPE THICKNESS



Stantec

Stantec Consulting Ltd.
400 - 1331 Clyde Avenue
Ottawa ON
Tel. 613.722.4420
www.stantec.com

Copyright Reserved

The Contractor shall verify and be responsible for all dimensions. DO NOT scale the drawings - any errors or omissions shall be reported to Stantec without delay.
The Copyrights to all designs and drawings are the property of Stantec. Reproduction or use for any purpose other than that authorized by Stantec is forbidden.

Legend

- PROPOSED WATERMAIN
- PROPOSED VALVE AND VALVE BOX
- PROPOSED VALVE CHAMBER
- PROPOSED W3 CHAMBER
- PROPOSED REDUCER
- PROPOSED FIRE HYDRANT
- PROPOSED SANITARY SEWER
- PROPOSED STORM SEWER
- PROPOSED CATCHBASIN MANHOLE
- PROPOSED CATCHBASIN
- EXISTING WATERMAIN
- EXISTING VALVE AND VALVE BOX
- EXISTING VALVE CHAMBER
- EXISTING REDUCER
- EXISTING FIRE HYDRANT
- EXISTING COMBINED SEWER
- EXISTING STORM SEWER
- EXISTING CATCHBASIN MANHOLE
- EXISTING CATCHBASIN
- EXISTING WATERMAIN
- EXISTING VALVE AND VALVE BOX
- EXISTING VALVE CHAMBER
- EXISTING REDUCER
- EXISTING FIRE HYDRANT
- EXISTING COMBINED SEWER
- EXISTING STORM SEWER
- EXISTING CATCHBASIN MANHOLE
- EXISTING CATCHBASIN
- PROPOSED DEPRESSED CURB LOCATIONS
- PROPOSED BARRIER CURB
- THERMAL INSULATION ON STORM SEWER WHERE COVER IS LESS THAN 1.5m. THERMAL INSULATION ON WATERMAIN WHERE COVER IS LESS THAN 2.4m AS PER W22.
- WATER METER
- REMOTE WATER METER
- LIMITS OF ASPHALT OVERLAY FOLLOWING SERVICING CURB AND SIDEWALK INSTALLATION.

- Notes**
- ALL CATCH BASINS AND TRENCH DRAINS TO BE CONNECTED TO INTERNAL PLUMBING AND COLLECTED IN STORM WATER MANAGEMENT CISTERN. INSTALLATION BY OTHERS.
 - FINAL METER AND REMOTE METER LOCATIONS TO BE CONFIRMED BY MECHANICAL CONSULTANT.
 - THE LOCATION OF UTILITIES IS APPROXIMATE ONLY AND THE EXACT LOCATION SHOULD BE DETERMINED BY CONSULTING THE MUNICIPAL AUTHORITIES AND UTILITY COMPANIES CONCERNED. THE CONTRACTOR SHALL PROVE THE LOCATION OF UTILITIES AND SHALL BE RESPONSIBLE FOR THEIR PROTECTION AND THE IMPLEMENTATION OF ANY NECESSARY PROCEDURES CALLED FOR IN THE APPROPRIATE STANDARD AND REGULATIONS.
 - INTERNAL PLUMBING AND SUMP PUMPS TO BE DESIGNED BY THE MECHANICAL CONSULTANT.
 - STORMWATER MANAGEMENT TO BE PROVIDED THROUGH 2 CISTERNS. ONE CISTERN PER DEVELOPMENT PHASE.
PHASE 1 CISTERN = 110.0m³
PHASE 2 CISTERN = 170.0m³
 - MAX. CISTERN RELEASE RATE TO STORM SEWER
PHASE 1 CISTERN RELEASE RATE = 14.3L/s
PHASE 2 CISTERN RELEASE RATE = 23.6L/s
 - BOOSTER PUMPS TO BE PROVIDED TO MAINTAIN MINIMUM PRESSURES FOR TOWERS 6-STORIES AND HIGHER.
 - SUMP PUMP REQUIRED TO DISCHARGE TO INTERNAL SANITARY SEWER. (REFER TO MECHANICAL DRAWINGS FOR DETAILS)
 - FLOOR DRAINS LOCATED INSIDE PARKING GARAGE TO BE CONNECTED TO BUILDING INTERNAL SANITARY SEWER.
 - USF TO BE CONFIRMED BY THE STRUCTURAL CONSULTANT.

2	REVISED AS PER CITY COMMENTS	MJS	DT	24.05.20
1	REVISED AS PER CITY COMMENTS	MJS	DT	24.03.13
0	ISSUED FOR SPA	MJS	MF	23.05.15

Revision

By	App'd.	YY.MM.DD	
MJS	DT	23.02.06	
Dwn.	Chkd.	Dgn.	YY.MM.DD

File Name: 160401663 DB - 1.dwg

Permit-Seal

Client/Project
BRIGIL

265 CATHERINE STREET
OTTAWA, ONTARIO, CANADA

Title
SITE SERVICING PLAN

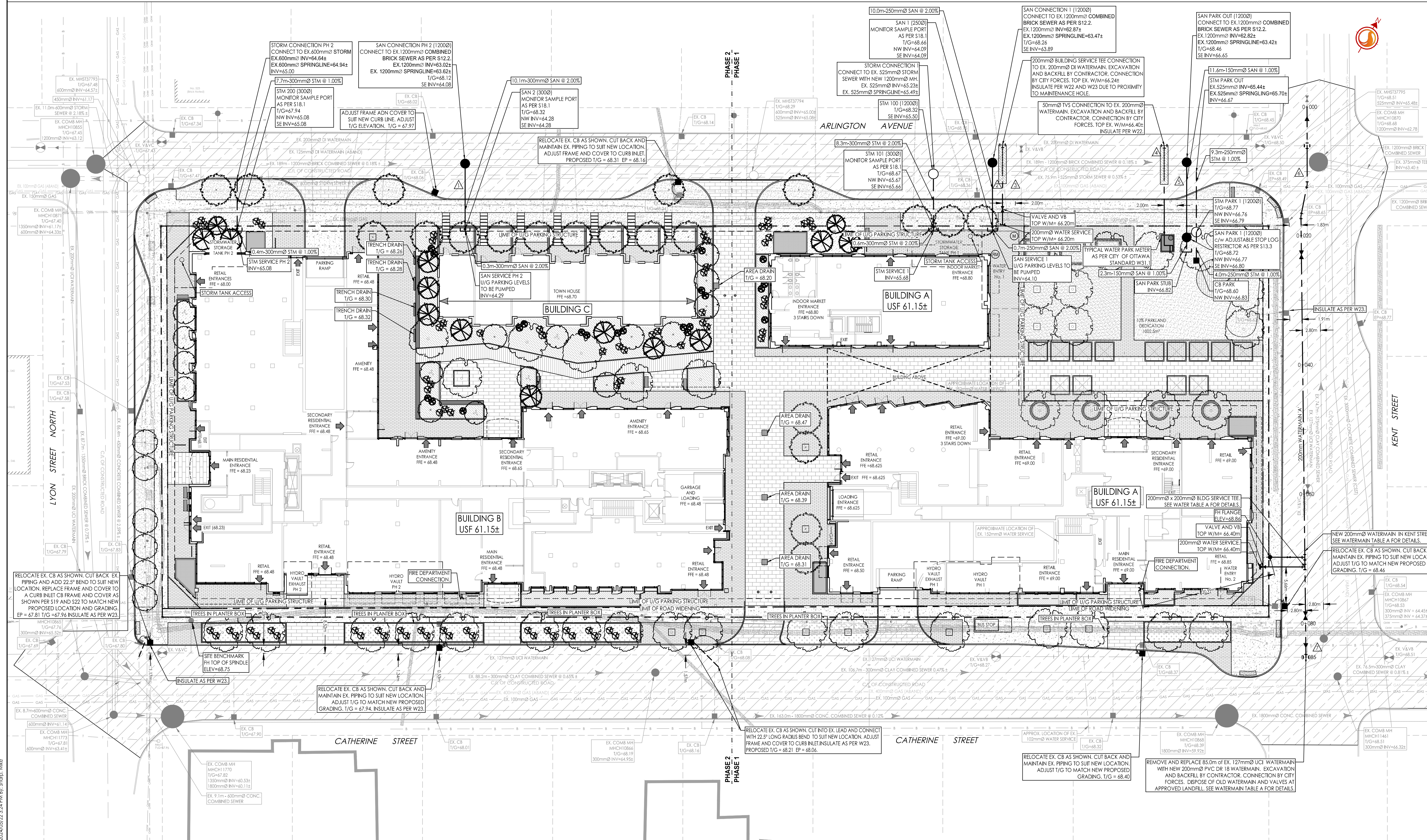
Project No.
160401663

Scale
1:300

Drawing No.
Sheet

Revision
Revision

SSP-1 3 of 7 2



V:\160401663\160401663.dwg design drawings\160401663 DB - 1.dwg
 2024/05/24 10:52:21 AM by 160401663

ORIGINAL SHEET - ARCH D