

Notes

SANITARY STATS

BUILDING A
80 - BACHELOR APTS @ 1.4PPU = 112 PEOPLE
91 - 1 BEDROOM APTS @ 1.4PPU = 127 PEOPLE
69 - 1 BEDROOM + DEN APTS @ 2.1PPU = 145 PEOPLE
125 - 2 BEDROOM APTS @ 2.1PPU = 263 PEOPLE
30 - 2 BEDROOM + DEN APTS @ 3.1PPU = 93 PEOPLE
5 - 3 BEDROOM APTS @ 3.1PPU = 16 PEOPLE
TOTAL POPULATION BUILDING A = 755 PEOPLE
COMMERCIAL AREA = 1299.2m²

BUILDING B
97 - BACHELOR APTS @ 1.4PPU = 122 PEOPLE
169 - 1 BEDROOM APTS @ 1.4PPU = 237 PEOPLE
189 - 1 BEDROOM + DEN APTS @ 2.1PPU = 397 PEOPLE
245 - 2 BEDROOM APTS @ 2.1PPU = 515 PEOPLE
37 - 3 BEDROOM APTS @ 3.1PPU = 115 PEOPLE
TOTAL POPULATION BUILDING B = 1385 PEOPLE
COMMERCIAL AREA = 1123.8m²

BUILDING C - TOWN HOUSE
7 - TOWN HOUSE UNITS @ 3.1PPU = 22 PEOPLE
TOTAL POPULATION TOWN HOUSE = 22 PEOPLE

TOTAL POPULATION = 2162
TOTAL COMMERCIAL SPACE = 2423m² @ 28,000 L/ha/day

NO.	REVISION	DATE	BY	CHKD.	DT.
1	REVISED AS PER CITY COMMENTS	24.03.13	MJS		
0	ISSUED FOR SPA	23.05.15	MJS	MF	
Revision					
			By	Appd.	YY.MM.DD
File Name: 160401663 DB - 1.dwg					
			Dwn.	Chkd.	Dgn.
					YY.MM.DD

Permit-Seal

Client/Project
BRIGIL

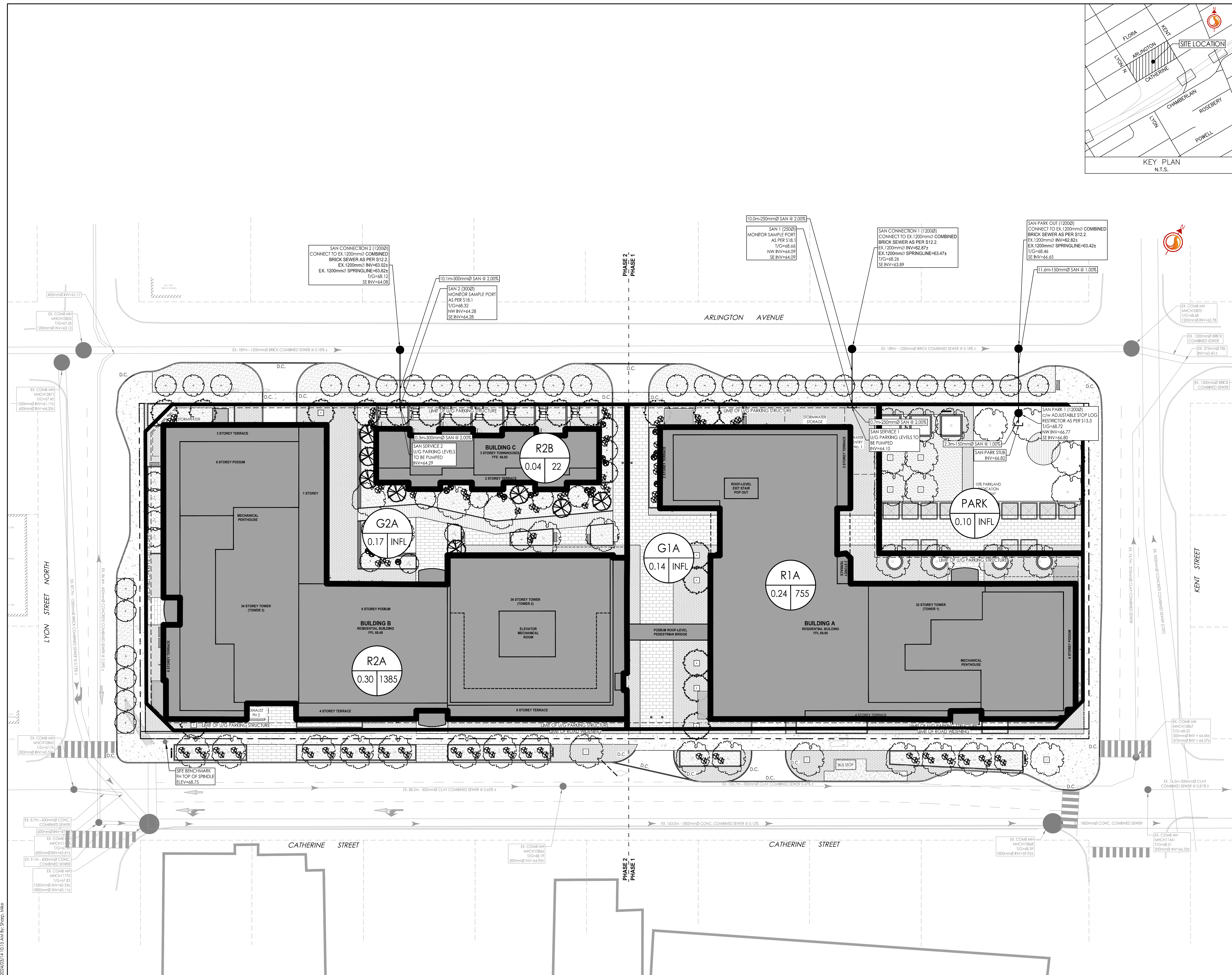
265 CATHERINE STREET
OTTAWA, ONTARIO, CANADA

Title
SANITARY DRAINAGE PLAN

Project No. 160401663
Drawing No. SA-1

Scale 1:300
Sheet 7 of 7

Revision 1



\N:\160401663\160401663.dwg
 2014/03/11 10:15:15 AM
 ORIGINAL SHEET - ARCH D