

Legend

- PROPOSED WATERMAIN
- PROPOSED VALVE AND VALVE BOX
- PROPOSED VALVE CHAMBER
- PROPOSED REDUCER
- PROPOSED FIRE HYDRANT
- PROPOSED SANITARY SEWER AND MH
- PROPOSED STORM SEWER AND MH
- PROPOSED SINGLE CATCHBASIN
- PROPOSED DOUBLE CATCHBASIN
- PROPOSED CATCHBASIN ELEVATION PER CITY STD S31
- PROPOSED AREA DRAIN / TRENCH DRAIN TO BE CONNECTED TO INTERNAL BUILDING MECHANICAL SYSTEMS
- EXISTING WATERMAIN
- EXISTING/FUTURE VALVE AND VALVE BOX
- EXISTING/FUTURE VALVE CHAMBER
- EXISTING/FUTURE FIRE HYDRANT
- EXISTING/FUTURE SANITARY SEWER
- EXISTING/FUTURE STORM SEWER
- EXISTING/FUTURE CATCHBASIN MANHOLE
- EXISTING/FUTURE CATCHBASIN
- PROPOSED DEPRESSED CURB LOCATIONS
- PROPOSED BARRIER CURB
- THERMAL INSULATION ON STORM SEWER WHERE COVER IS LESS THAN 1.5m. THERMAL INSULATION ON WATERMAIN WHERE COVER IS LESS THAN 2.4m AS PER WZZ.
- WATER METER
- REMOTE WATER METER
- LANDSCAPE AREAS
- ROAD CUT AS PER CITY OF OTTAWA STANDARD DETAIL R10
- EXISTING STREET LIGHT CABLE
- EXISTING BELL LINE
- EXISTING ROGERS LINE
- EXISTING GASMAIN

Notes

- FINAL METER AND REMOTE METER LOCATIONS TO BE CONFIRMED BY THE MECHANICAL ENGINEERING CONSULTANT.
- THE LOCATION OF UTILITIES IS APPROXIMATE ONLY AND THE EXACT LOCATION SHOULD BE DETERMINED BY CONSULTING THE MUNICIPAL AUTHORITIES AND UTILITIES COMPANIES CONCERNED. THE CONTRACTOR SHALL PROVE THE LOCATION OF UTILITIES AND SHALL BE RESPONSIBLE FOR THEIR PROTECTION AND THE IMPLEMENTATION OF ANY NECESSARY PROCEDURES CALLED FOR IN THE APPROPRIATE STANDARD AND REGULATIONS.
- INTERNAL PLUMBING SYSTEMS TO BE DESIGNED BY THE MECHANICAL ENGINEERING CONSULTANT.
- STORMWATER MANAGEMENT TO BE PROVIDED THROUGH INTERNAL BUILDING MECHANICAL SYSTEMS.
PHASE 3 + 4 175.0 m² MAX RELEASE RATE TO STORM SEWER = 21.3 L/s.
PHASE 5 + 6 215.0 m² MAX RELEASE RATE TO STORM SEWER = 17.2 L/s.

1	REVISED AS PER NEW SITE PLAN	MJS	RB	24.07.19	
0	ISSUED FOR SPA	MJS	RB	23.05.25	
Revision					
		By	App'd.	YY.MM.DD	
File Name:	160401676 D8.dwg	MJS	RB	MJS	23.03.31
		Dwn.	Chkd.	Dgn.	YY.MM.DD

Permit-Seal



Client/Project
BRIGIL HOMES

BASELINE TOWERS 3-4-5-6
2946 BASELINE ROAD
OTTAWA, ON, CANADA

Title
SITE SERVICING PLAN

Project No.	Scale	0	4	12	20m
160401676	1:400				
Drawing No.	Sheet	Revision			

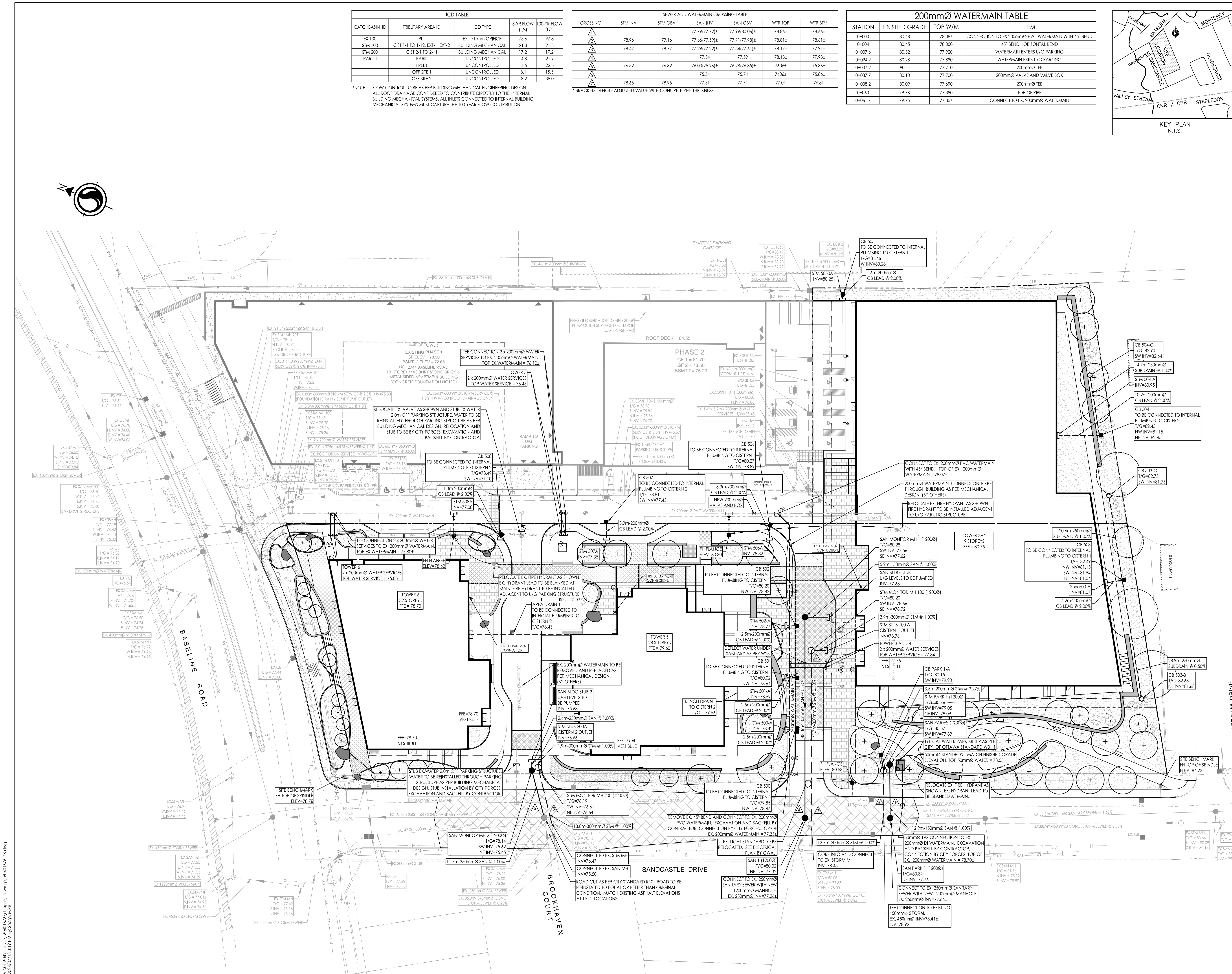
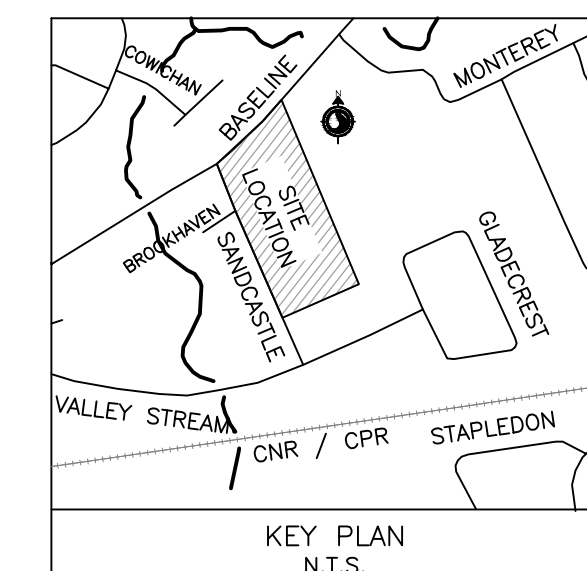
ICD TABLE				
CATCHBASIN ID	TRIBUTARY AREA ID	ICD TYPE	S-YR FLOW (L/s)	100-YR FLOW (L/s)
EX 100	PL1	EX 171 mm ORPHICE	75.6	97.3
STM 100	CST 1-1 TO 1-12 EXT-1, EXT-2	BUILDING MECHANICAL	21.3	21.3
STM 200	CST 2-1 TO 2-11	BUILDING MECHANICAL	17.2	17.2
PARK 1	PARK	UNCONTROLLED	14.8	21.9
	FREE1	UNCONTROLLED	11.6	22.5
	OFF-SITE 1	UNCONTROLLED	8.1	15.5
	OFF-SITE 2	UNCONTROLLED	18.2	35.0

*NOTE: FLOW CONTROL TO BE AS PER BUILDING MECHANICAL ENGINEERING DESIGN.
ALL ROOF DRAINAGE CONSIDERED TO CONTRIBUTE DIRECTLY TO THE INTERNAL BUILDING MECHANICAL SYSTEMS. ALL INLETS CONNECTING TO INTERNAL BUILDING MECHANICAL SYSTEMS MUST CAPTURE THE 100 YEAR FLOW CONTRIBUTION.

SEWER AND WATERMAIN CROSSING TABLE						
CROSSING	STM INV	STM OBV	SAN INV	SAN OBV	WTR TOP	WTR BTM
▲	78.96	79.16	77.79(77.72)±	77.99(80.06)±	78.86±	78.66±
▲	78.47	78.77	77.64(77.59)±	77.91(77.98)±	78.81±	78.61±
▲	76.52	76.82	76.03(75.94)±	76.28(76.35)±	76.04±	75.84±
▲	78.65	78.95	77.51	77.71	77.01	76.81

*BRACKETS DENOTE ADJUSTED VALUE WITH CONCRETE PIPE THICKNESS

200mmØ WATERMAIN TABLE			
STATION	FINISHED GRADE	TOP W/M	ITEM
0+000	80.48	78.08±	CONNECTION TO EX. 200mmØ PVC WATERMAIN WITH 45° BEND
0+004	80.45	78.050	45° BEND HORIZONTAL BEND
0+007.6	80.32	77.920	WATERMAIN ENTERS U/G PARKING
0+024.9	80.28	77.880	WATERMAIN ENTERS U/G PARKING
0+037.2	80.11	77.710	200mmØ TEE
0+037.7	80.10	77.700	200mmØ VALVE AND VALVE BOX
0+038.2	80.09	77.690	200mmØ TEE
0+060	79.78	77.380	TOP OF PIPE
0+061.7	79.75	77.35±	CONNECT TO EX. 200mmØ WATERMAIN



U:\Projects\160401676\160401676.dwg
 2024/07/19 11:31 AM
 ORIGINAL SHEET - ARCH D