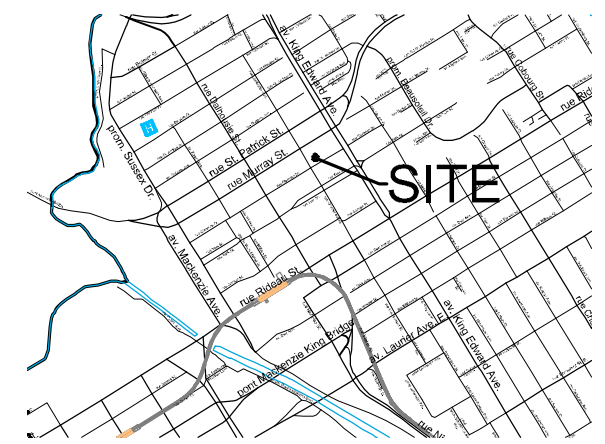
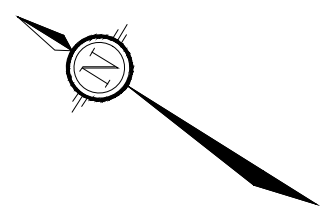


M:\2011\11023\CAD\Planning\Site Plans\11023-SP.dwg, SP, Apr 07, 2022 - 12:00pm, wslloss

LEGEND

Property Line



KEY PLAN
N.T.S.

SITE PLAN

211 CLARENCE STREET

PART OF LOT 2
REGISTERED PLAN 42482
CITY OF OTTAWA

1 : 150

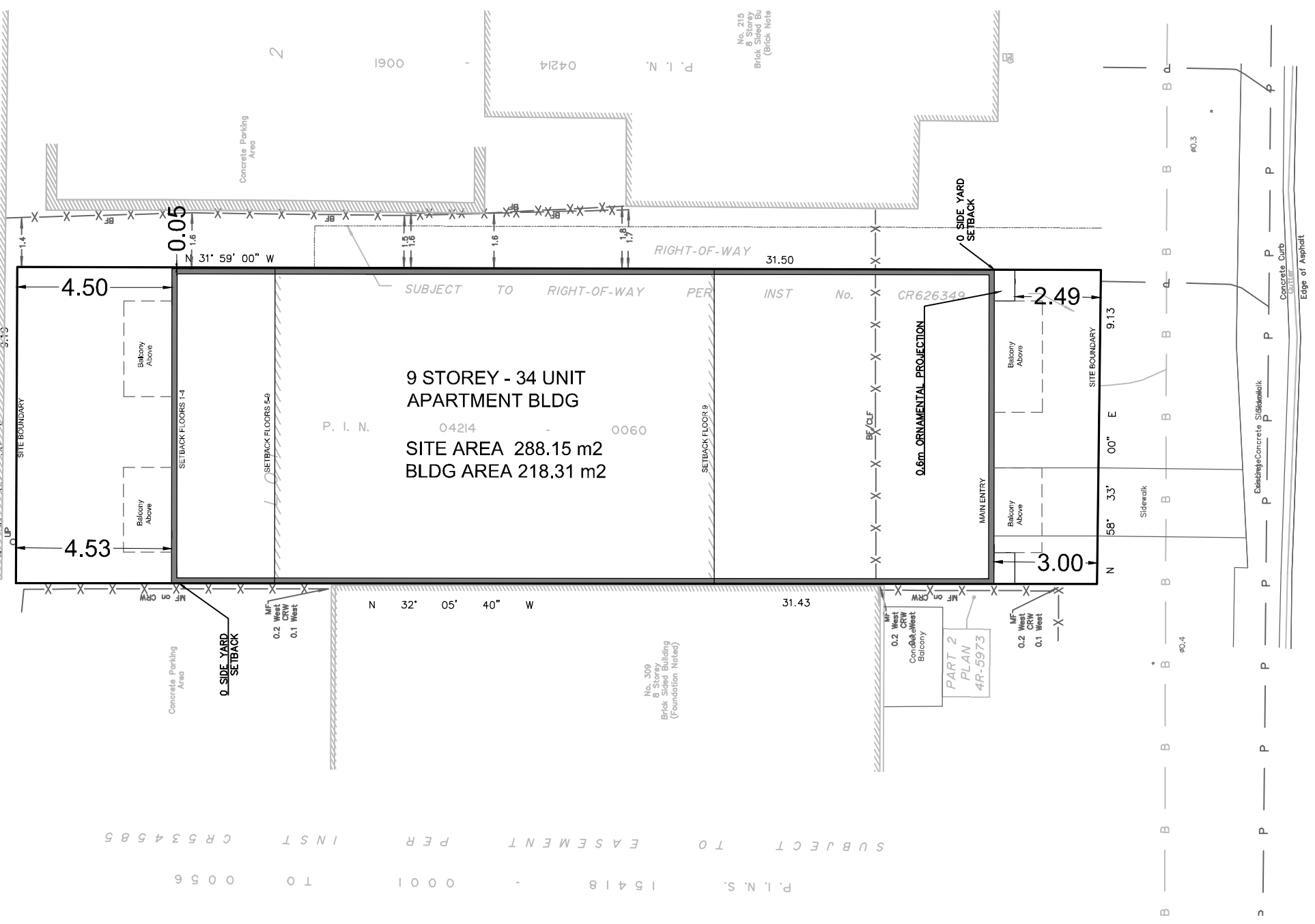
No.	REVISION	DATE	BY
1.	ISSUED FOR SITE PLAN CONTROL	xxx	JK

NOVATECH
Engineers, Planners & Landscape Architects
Suite 200, 240 Michael Cowpland Drive
Ottawa, Ontario, Canada K2M 1P6
Telephone (613) 254-9643
Facsimile (613) 254-5867
Website www.novatech-eng.com

ISSUED	APRIL, 2022
PROJECT No.	111023
DRAWING No.	111023-SP

D07-XX-XX-XXXX

SOURCE REFERENCE:
Legal Information: *Plan of Survey*
Farley, Smith & Denis Surveying Limited / 2011 / MTM Zone 9, NAD 83



Clarence Street (FORMERLY PARRY STREET)

CLARENCE

P. I. N. S. 15418 - 0001 TO 0056
EASEMENT TO INST 04214 0650 LOT 27
SUBJECT TO EASEMENT PER INST 04214 0650 LOT 28