

TOPOGRAPHICAL PLAN OF SURVEY OF  
PART OF LOTS 1 and 2  
REGISTERED PLAN 408456  
CITY OF OTTAWA  
Surveyed by Annis, O'Sullivan, Vollebek Ltd.

Scale 1 : 250  
0 5 10 Metres

Metric  
DISTANCES SHOWN ON THIS PLAN ARE IN METRES AND  
CAN BE CONVERTED TO FEET BY DIVIDING BY 0.3048

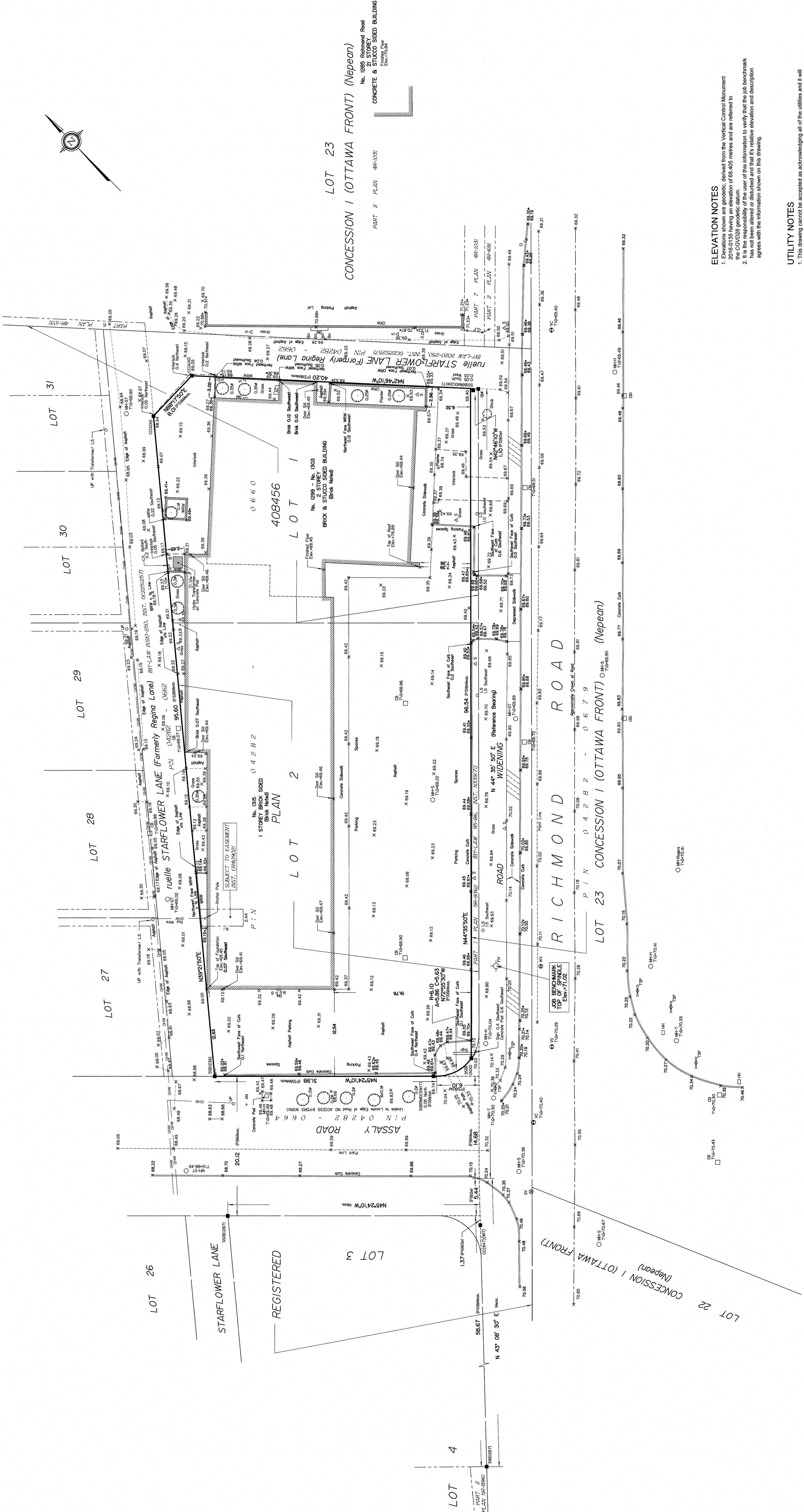
Surveyor's Certificate

I CERTIFY THAT:  
1. This plan was prepared and is accordance with the Surveyors Act and the Surveyors Regulation and the regulations made under them.  
2. The survey was completed on the 9th day of May, 2022.

DATE: May 20, 2022  
ANNIS, O'SULLIVAN, VOLLEBEK LTD.  
Ontario Land Surveyor

Notes & Legend

Denotes	
—○—	Survey Monument Planted
—■—	Survey Monument Found
SSB	Standard Iron Bar
B	Short Standard Iron Bar
BP	Round Iron Bar
C	Cut Cross
(WT)	Witness
(M)	Measurement
(ACC)	Adjusted
(P)	Point
(E)	End of Line
(M-1)	Maintenance Hole (Sanitary)
(M-2)	Maintenance Hole (Storm Sewer)
(M-3)	Maintenance Hole (Traffic)
(M-4)	Maintenance Hole (Hydro)
(M-5)	Fire Hydrant
(M-6)	Water Valve
(M-7)	Valve Chamber (Watermain)
(M-8)	Handhole
(M-9)	Overhead Wires
(M-10)	Utility Pole
(M-11)	Anchor
(M-12)	Light Standard
(M-13)	Catch Basin
(M-14)	Catch Basin Inlet
(M-15)	Sign
(M-16)	Chain Link Fence
(M-17)	Top of Grade
(M-18)	Gas Valve
(M-19)	Gas Meter
(M-20)	A/C Conditioner
(M-21)	Wooden Retaining Wall
(M-22)	Brick Retaining Wall
(M-23)	Concrete Retaining Wall
(M-24)	Diameter
(M-25)	Location of Elevations
(M-26)	Top of Curb / Wall Elevations
(M-27)	Centreline
(M-28)	Deciduous Tree



ELEVATION NOTES

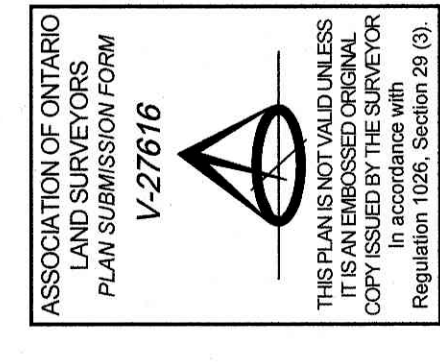
- Elevations shown are geoidic, derived from the Vertical Control Monument 2010005 having an elevation of 68.405 metres and are referred to MTL Zone 8 (175°30' West Longitude) NAD83 (original).
- It is the responsibility of the user of this information to verify that the job benchmark has not been altered or disturbed and that its relative elevation and description agrees with the information shown on this drawing.

UTILITY NOTES

- The user of this information is accepted as acknowledging all of the utility and shall be the responsibility of the user to contact the respective utility authorities for confirmation.
- Only visible surface utilities were located.
- A field location of underground plant by the permit utility authority is mandatory before any work involving breaking ground, probing, excavating etc.

SITE AREA = 4142.3 m<sup>2</sup>

Bearings are grid, derived from the southern limit of Part 1 Plan 0R-982, which is a continuation of the southern limit of Part 1 Plan 0R-982, MTL Zone 8 (175°30' West Longitude) NAD83 (original).



ASSOCIATION OF ONTARIO  
LAND SURVEYORS  
PLAN SUBMISSION FORM  
V-27616

ANNIS, O'SULLIVAN, VOLLEBEK LTD.  
14 Nepean, Ont. K2E 7S8  
Phone: (613) 727-8850 / Fax: (613) 727-0779  
Land Surveyors Lic. No. 22822-28, 22822-29, 22822-30, 22822-31, 22822-32, 22822-33, 22822-34, 22822-35, 22822-36, 22822-37, 22822-38, 22822-39, 22822-40, 22822-41, 22822-42, 22822-43, 22822-44, 22822-45, 22822-46, 22822-47, 22822-48, 22822-49, 22822-50, 22822-51, 22822-52, 22822-53, 22822-54, 22822-55, 22822-56, 22822-57, 22822-58, 22822-59, 22822-60, 22822-61, 22822-62, 22822-63, 22822-64, 22822-65, 22822-66, 22822-67, 22822-68, 22822-69, 22822-70, 22822-71, 22822-72, 22822-73, 22822-74, 22822-75, 22822-76, 22822-77, 22822-78, 22822-79, 22822-80, 22822-81, 22822-82, 22822-83, 22822-84, 22822-85, 22822-86, 22822-87, 22822-88, 22822-89, 22822-90, 22822-91, 22822-92, 22822-93, 22822-94, 22822-95, 22822-96, 22822-97, 22822-98, 22822-99, 22822-100