

### Copyright Reserved

The Contractor shall verify and be responsible for all dimensions. DO NOT scale the drawings - any errors or omissions shall be reported to Stantec without delay.  
The Copyrights to all designs and drawings are the property of Stantec. Reproduction or use for any purpose other than that authorized by Stantec is forbidden.

### Legend

- PROPOSED SILT FENCE BOUNDARY AS PER OPSD 219.110
- PROPOSED MUD MAT LOCATION
- PROPOSED CATCH BASIN PROTECTION AS PER DETAIL
- EXISTING STORM MANHOLE
- PROPOSED SANITARY MANHOLE
- EXISTING SANITARY MANHOLE
- EXISTING CATCH BASIN

### Notes

#### Best Management Practices

CONTRACTOR TO PROVIDE EROSION AND SEDIMENT CONTROLS (BEST MANAGEMENT PRACTICES) DURING CONSTRUCTION OF THIS PROJECT.

EROSION MUST BE MINIMIZED AND SEDIMENTS MUST BE REMOVED FROM CONSTRUCTION SITE RUN-OFF IN ORDER TO PROTECT DOWNSTREAM AREAS. DURING ALL CONSTRUCTION, EROSION AND SEDIMENTATION SHOULD BE CONTROLLED BY THE FOLLOWING TECHNIQUES.

- LIMIT THE EXTENT OF EXPOSED SOILS AT ALL TIMES.
- REVEGETATE EXPOSED AREAS AND SLOPES AS SOON AS POSSIBLE.
- MINIMIZE AREA TO BE CLEARED AND GRUBBED.
- PROTECT EXPOSED SLOPES WITH PLASTIC OR SYNTHETIC MULCHES.
- INSTALL FILTER CLOTH BETWEEN FRAME AND COVER ON ALL PROPOSED CATCH BASINS AND CATCH BASIN MANHOLES AND ON ALL EXISTING CATCH BASINS THAT WILL RECEIVE RUN-OFF FROM THE SITE.
- A SILT FENCE SHALL BE INSTALLED AROUND THE PERIMETER OF ALL AND ANY STOCKPILES OF MATERIAL TO BE USED OR REMOVED FROM SITE (LOCATION TO BE DETERMINED).
- A VISUAL INSPECTION SHALL BE DONE DAILY ON SEDIMENT CONTROL MEASURES AND CLEANED OF ANY ACCUMULATED SILT AS REQUIRED. THE DEPOSITS WILL BE DISPOSED OFF SITE AS PER THE REQUIREMENTS OF THE CONTRACT.
- SEDIMENT CONTROL BARRIERS MAY ONLY BE REMOVED TEMPORARILY WITH APPROVAL OF CONTRACT ADMINISTRATOR TO ACCOMMODATE CONSTRUCTION OPERATIONS. ALL AFFECTED BARRIERS MUST BE REINSTATED AT NIGHT WHEN CONSTRUCTION IS COMPLETED. NO REMOVAL WILL OCCUR IF THERE IS A SIGNIFICANT RAINFALL EVENT ANTICIPATED (>10mm) UNLESS A NEW DEVICE HAS BEEN INSTALLED TO PROTECT THE EXISTING STORM AND SANITARY SEWER SYSTEMS.
- NO REFUELING OR CLEANING OF EQUIPMENT IS PERMITTED NEAR ANY EXISTING WATERWAY.
- CONTRACTOR SHALL REMOVE SEDIMENT CONTROL MEASURES WHEN, IN THE OPINION OF THE CONTRACT ADMINISTRATOR, THE MEASURE(S) IS NO LONGER REQUIRED. NO CONTROL MEASURES SHALL BE PERMANENTLY REMOVED WITHOUT PRIOR WRITTEN AUTHORIZATION FROM THE CONTRACT ADMINISTRATOR.
- THE CONTRACTOR SHALL PERIODICALLY, OR WHEN REQUESTED BY THE CONTRACT ADMINISTRATOR, CLEAN OUT ACCUMULATED SEDIMENTS AS REQUIRED.
- THE CONTRACTOR SHALL IMMEDIATELY REPORT TO THE ENGINEER ANY ACCIDENTAL DISCHARGES OF SEDIMENT MATERIAL INTO THE WATERCOURSE. APPROPRIATE RESPONSE MEASURES, INCLUDING ANY REPAIRS TO EXISTING CONTROL MEASURES OR THE IMPLEMENTATION OF ADDITIONAL CONTROL MEASURES, SHALL BE CARRIED OUT BY THE CONTRACTOR WITHOUT DELAY.
- CONTRACTOR SHALL INSTALL MUD MATS AT ALL ENTRANCES TO THE SITE.
- CONTRACTOR IS RESPONSIBLE TO KEEP THE ROADS FREE AND CLEAR OF MUD AND DEBRIS.

Rev	Description	By	Appd.	YY.MM.DD
4	REVISED ROAD GEOMETRY	WJ	DT	24.09.18
3	REVISED PER CITY COMMENTS	WJ	DT	24.08.13
2	REVISED PER CITY COMMENTS	WJ	DT	24.05.27
1	ISSUED FOR REVIEW	TM	DT	23.06.07

### Revision

File Name:	TM	KK	TM	23.03.15
160401784 DB.dwg	Dwn.	Chkd.	Dgn.	YY.MM.DD

### Permit-Seal



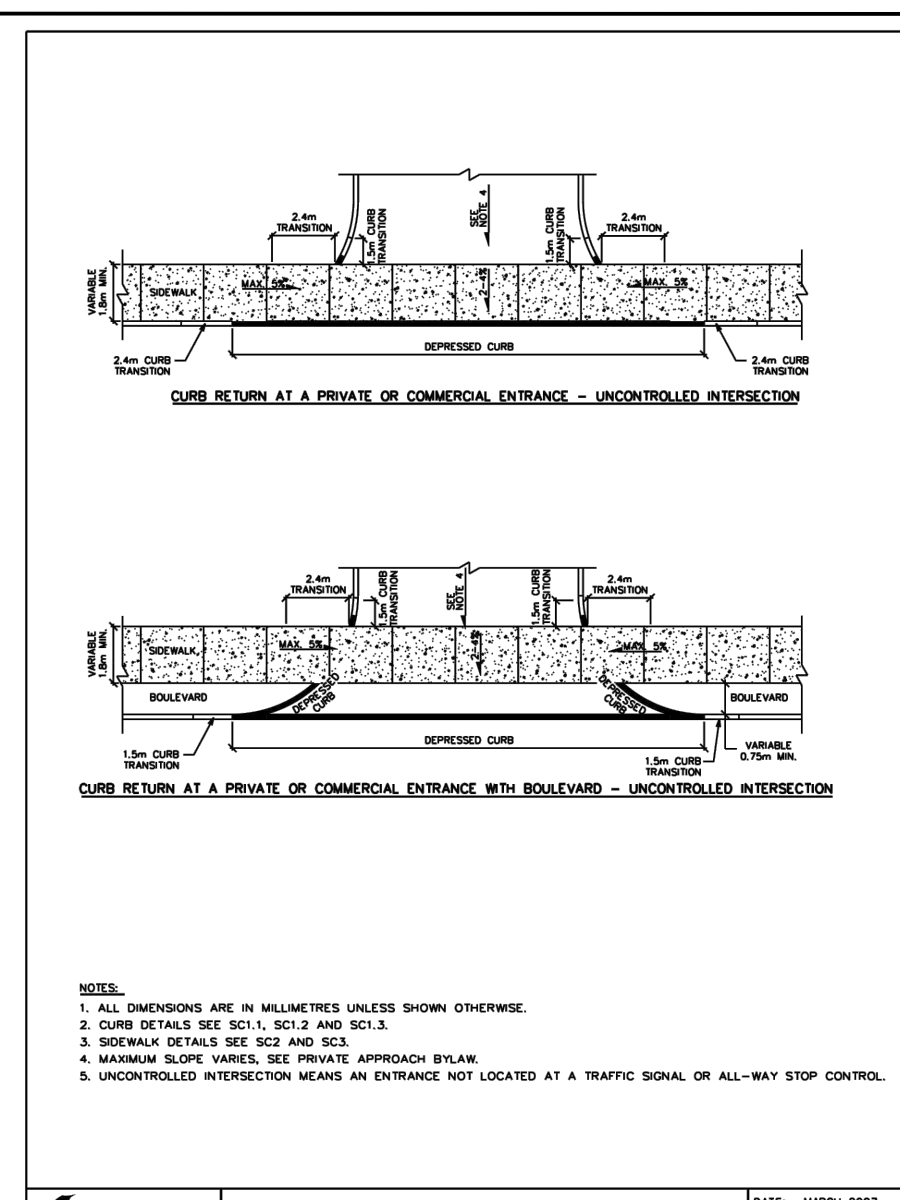
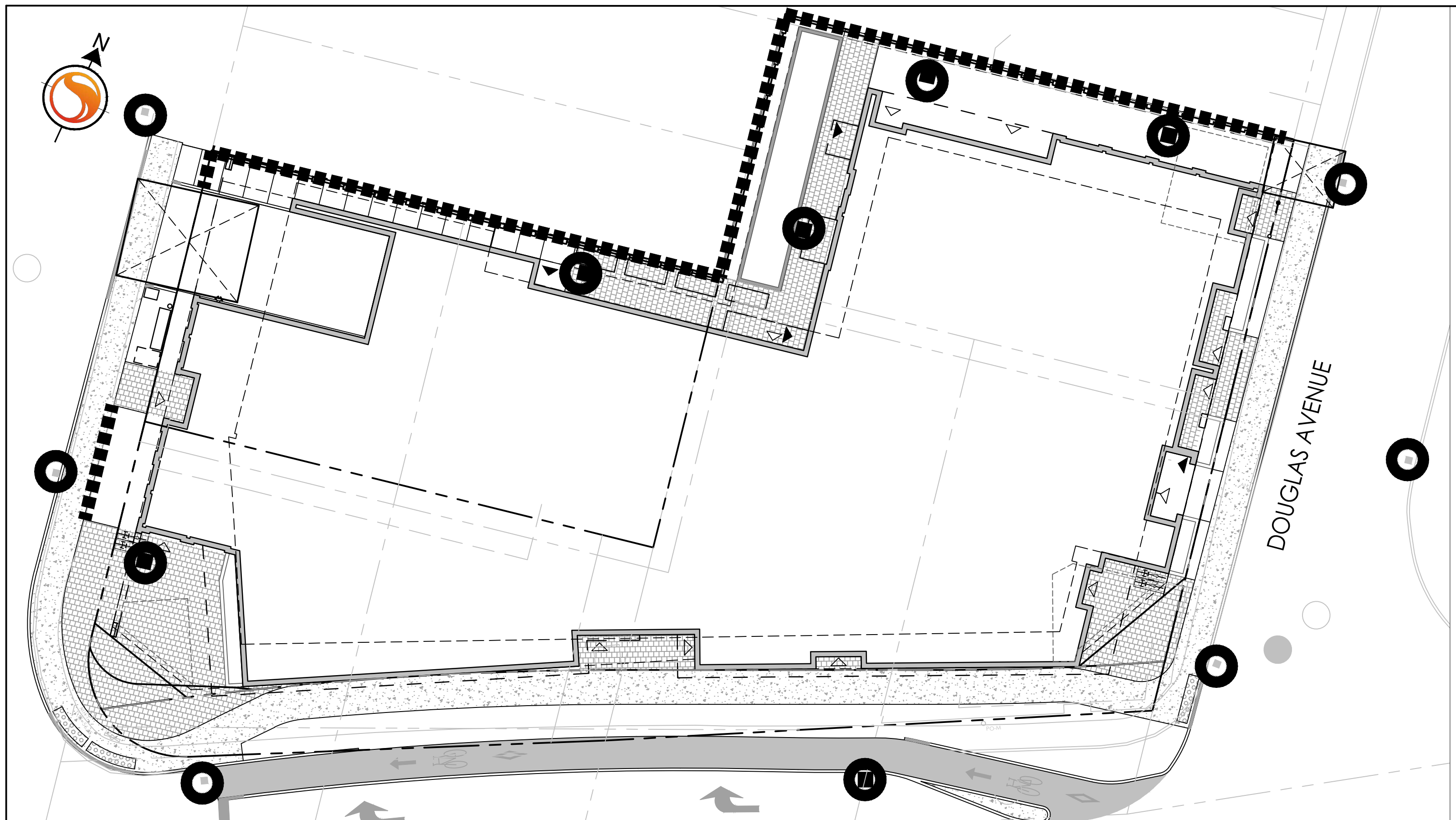
### Client/Project

Project Studio  
47 BEECHWOOD AVENUE  
OTTAWA, ONTARIO, CANADA

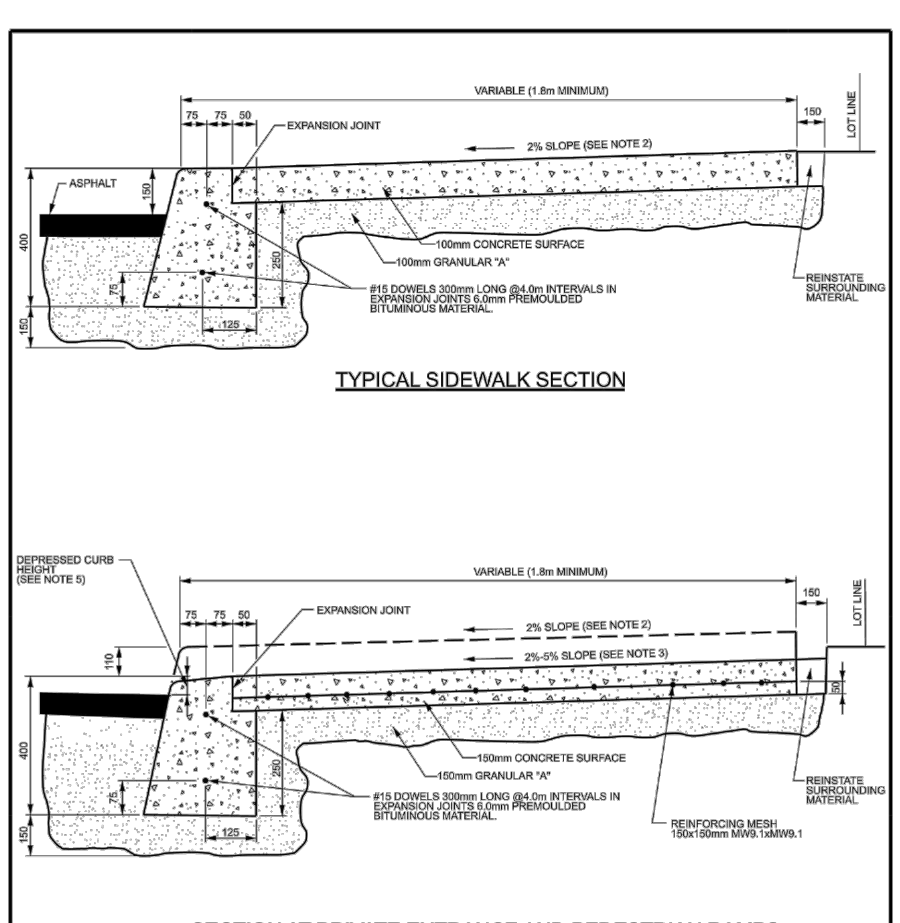
### Title

EROSION CONTROL AND DETAILS SHEET

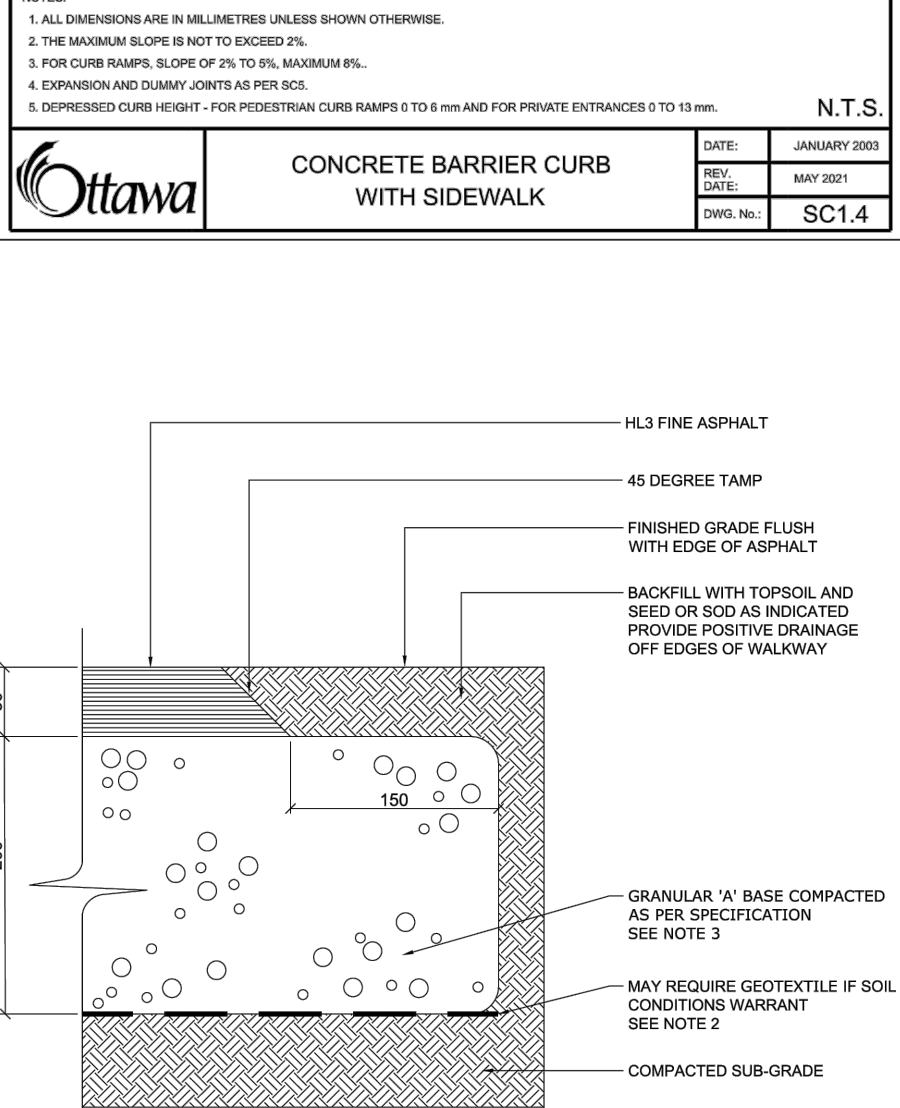
Project No.	Scale	
160401786		
Drawing No.	Sheet	Revision
EC-1	6 of 6	4



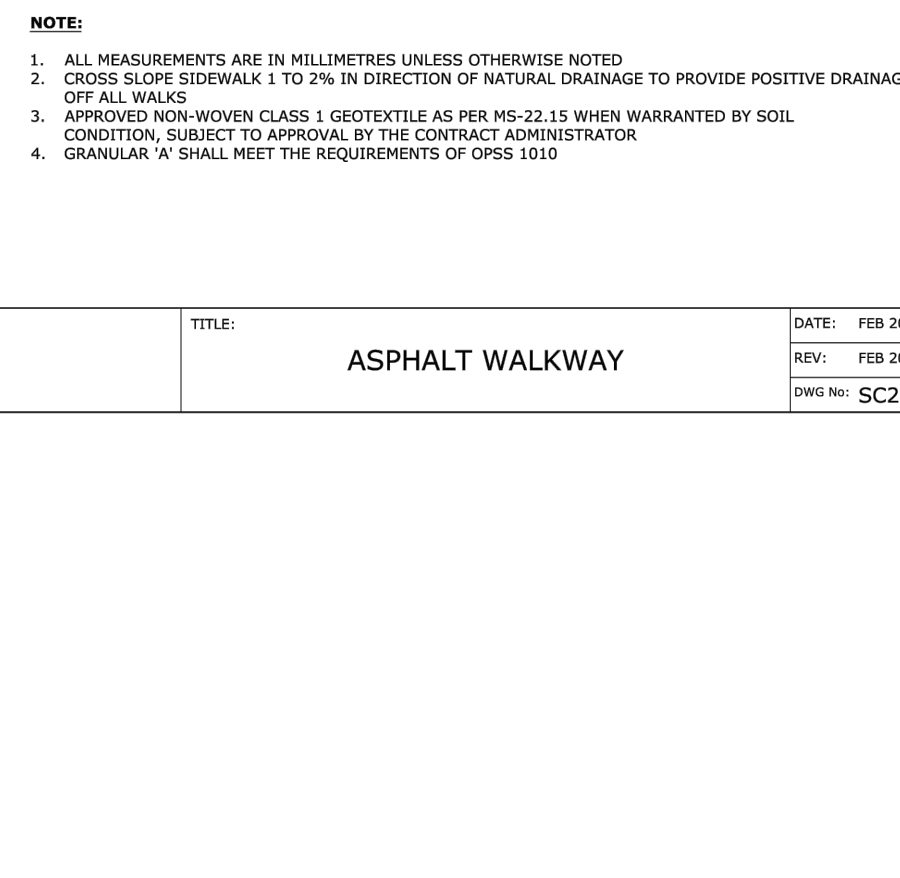
**CURB RETURN ENTRANCES - UNCONTROLLED INTERSECTIONS**  
DATE: MARCH 2022  
REV: MARCH 2021  
DWG. NO.: SC1.1



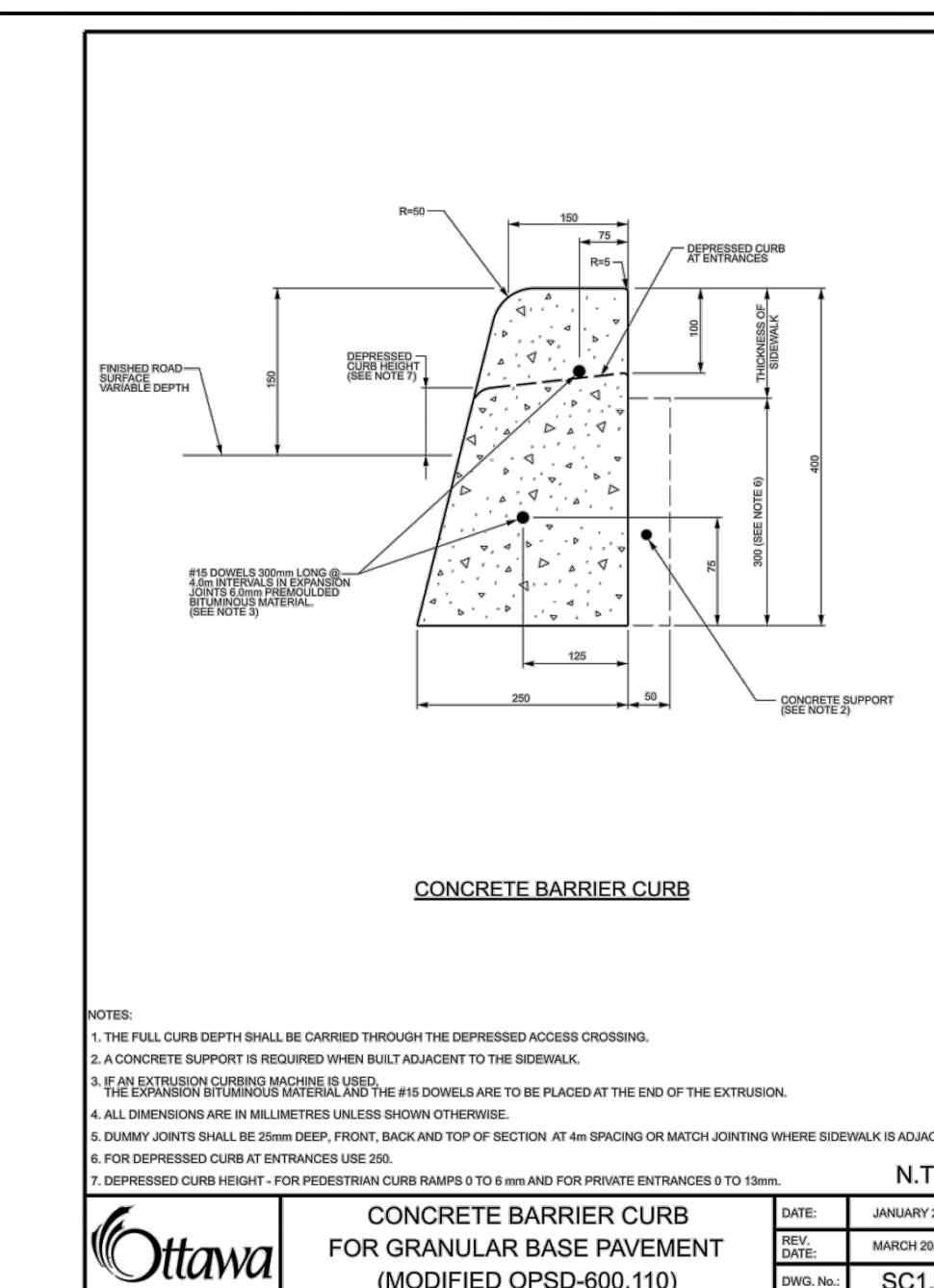
**CONCRETE BARRIER CURB WITH SIDEWALK**  
DATE: JANUARY 2008  
REV: MAY 2007  
DWG. NO.: SC1.4



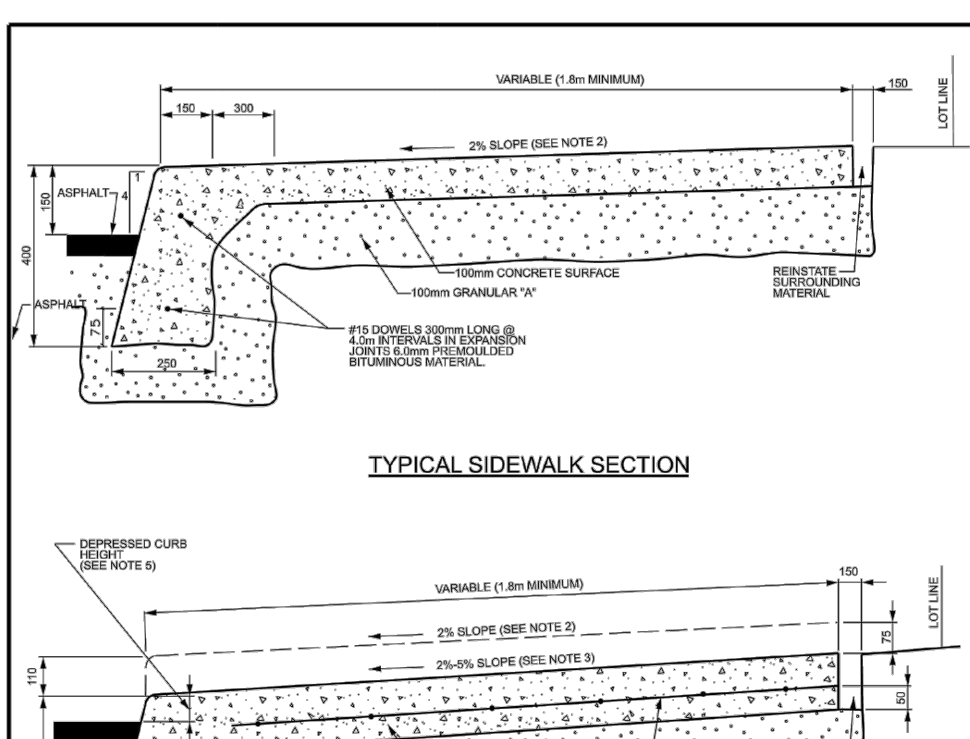
**TYPICAL CONCRETE SIDEWALK IN BOULEVARD**  
DATE: MAY 2007  
REV: MARCH 2006  
DWG. NO.: SC4



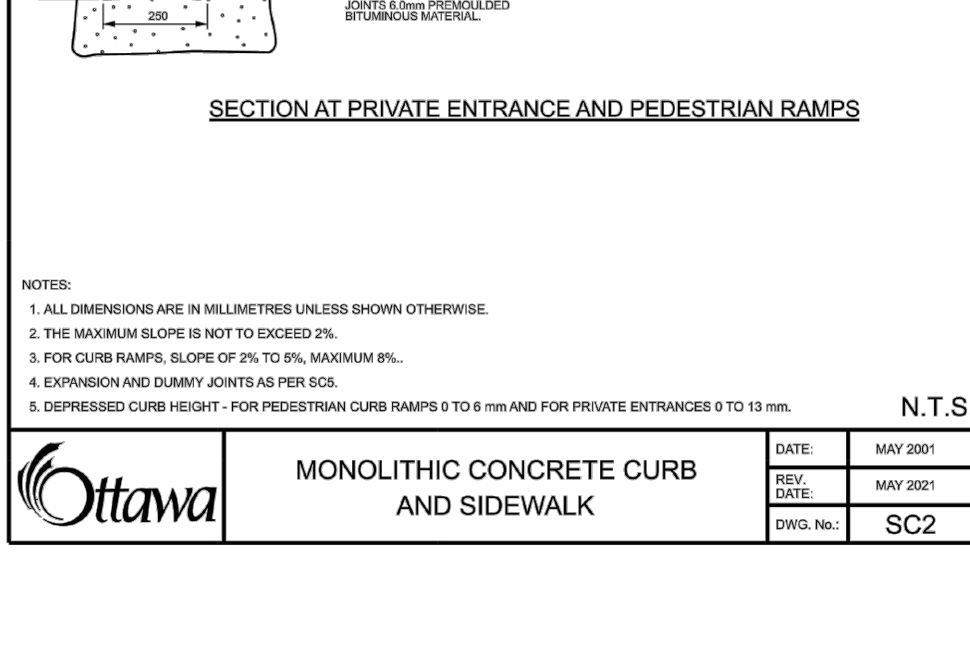
**ASPHALT WALKWAY**  
DATE: FEB 2013  
REV: FEB 2016  
DWG. NO.: SC2.0



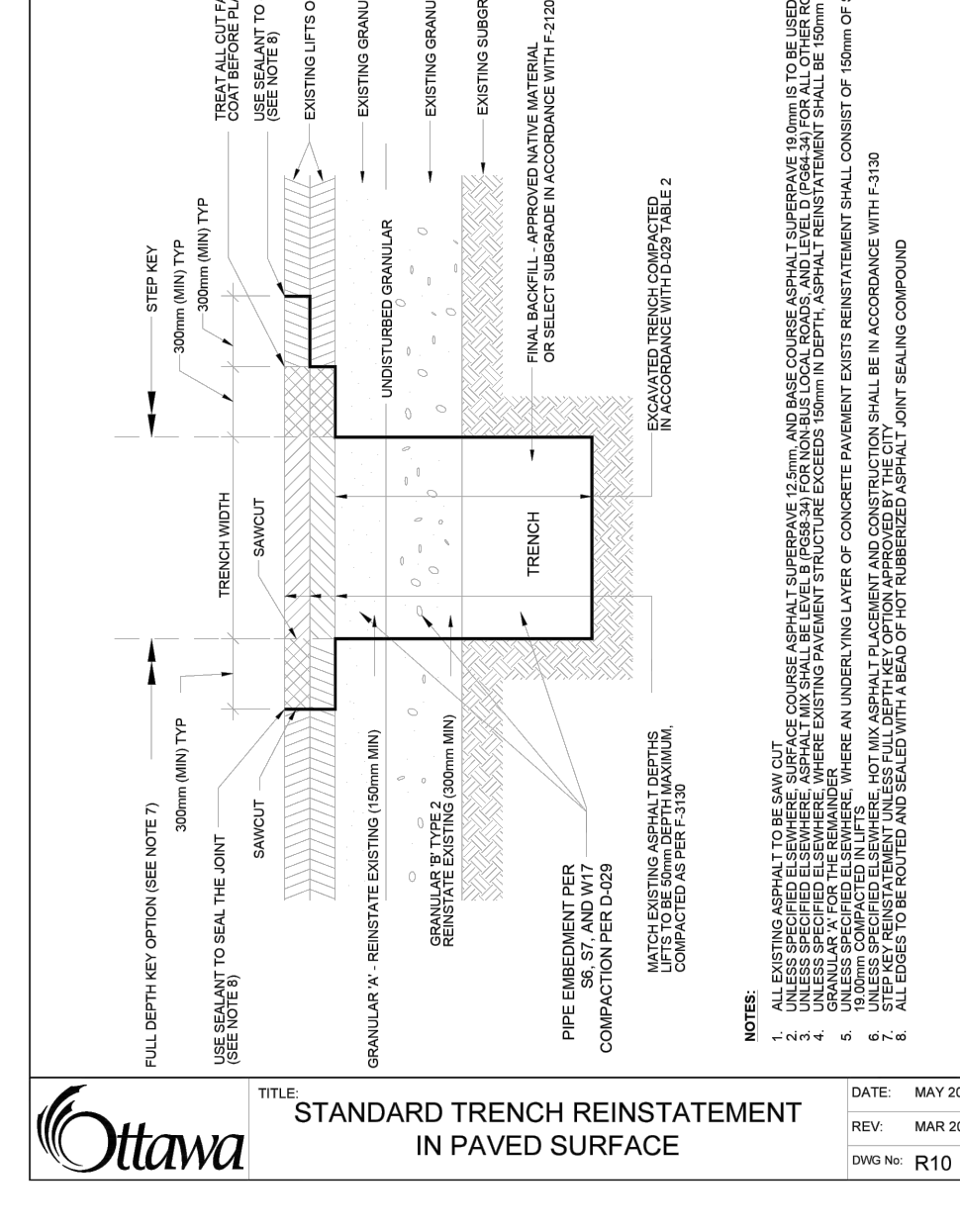
**CONCRETE BARRIER CURB FOR GRANULAR BASE PAVEMENT (MODIFIED OPSD-600.110)**  
DATE: JANUARY 2003  
REV: MARCH 2001  
DWG. NO.: SC1.1



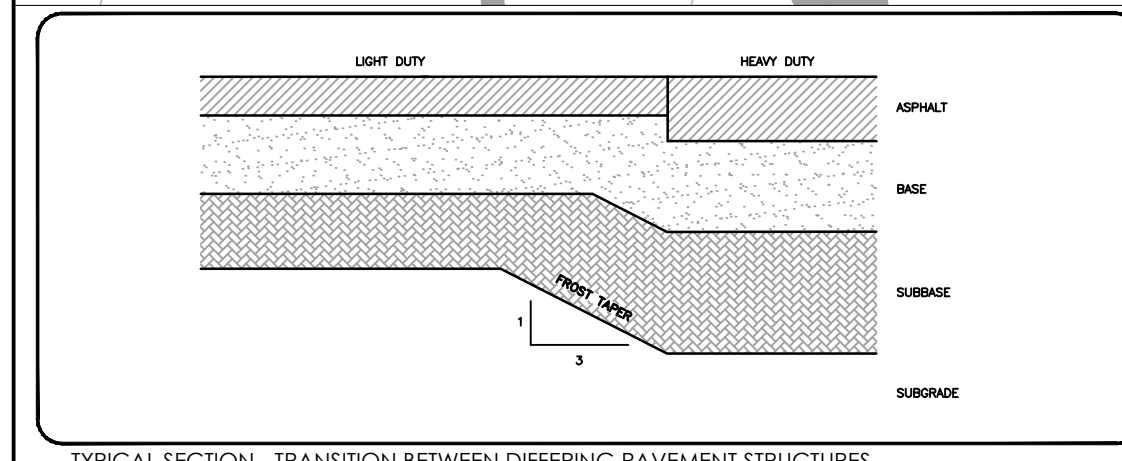
**CONCRETE BARRIER CURB WITH SIDEWALK**  
DATE: JANUARY 2008  
REV: MAY 2007  
DWG. NO.: SC1.4



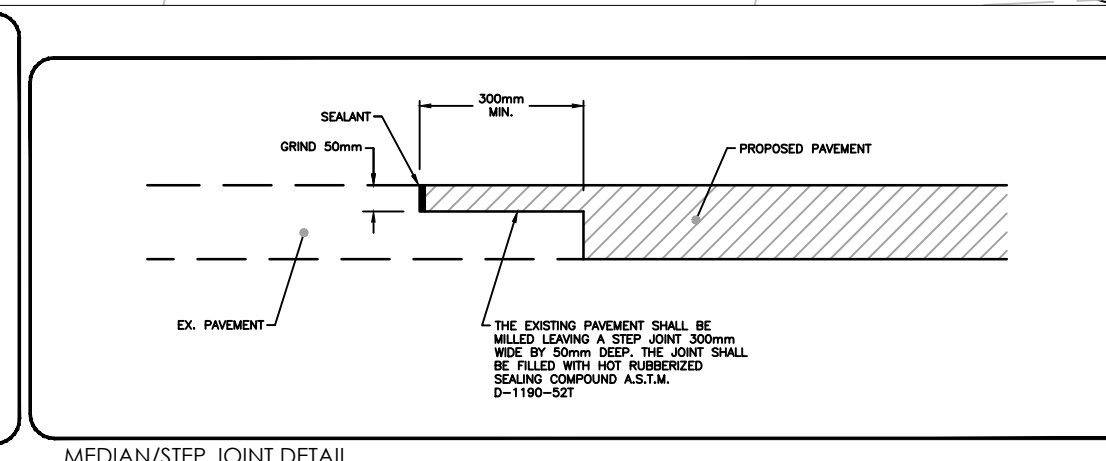
**MONOLITHIC CONCRETE CURB AND SIDEWALK**  
DATE: MAY 2001  
REV: MAY 2001  
DWG. NO.: SC2



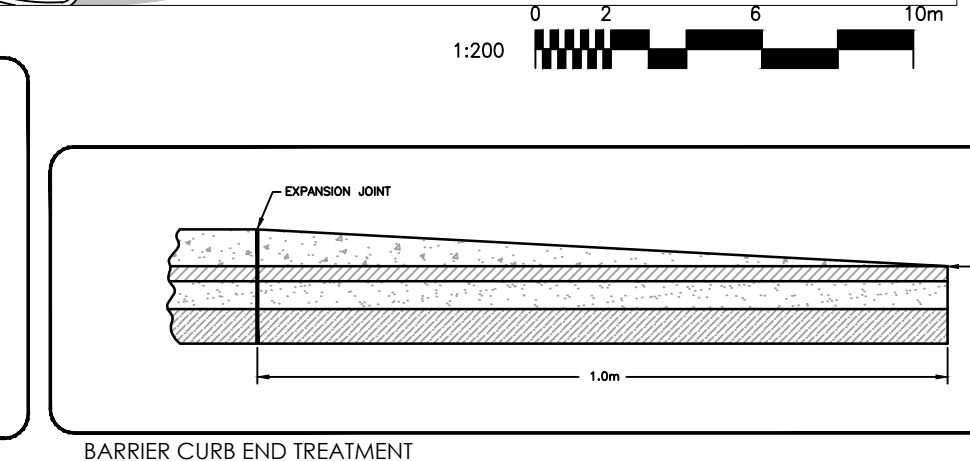
**STANDARD TRENCH REINSTATEMENT IN PAVED SURFACE**  
DATE: MAY 2001  
REV: MAR 2003  
DWG. NO.: R10



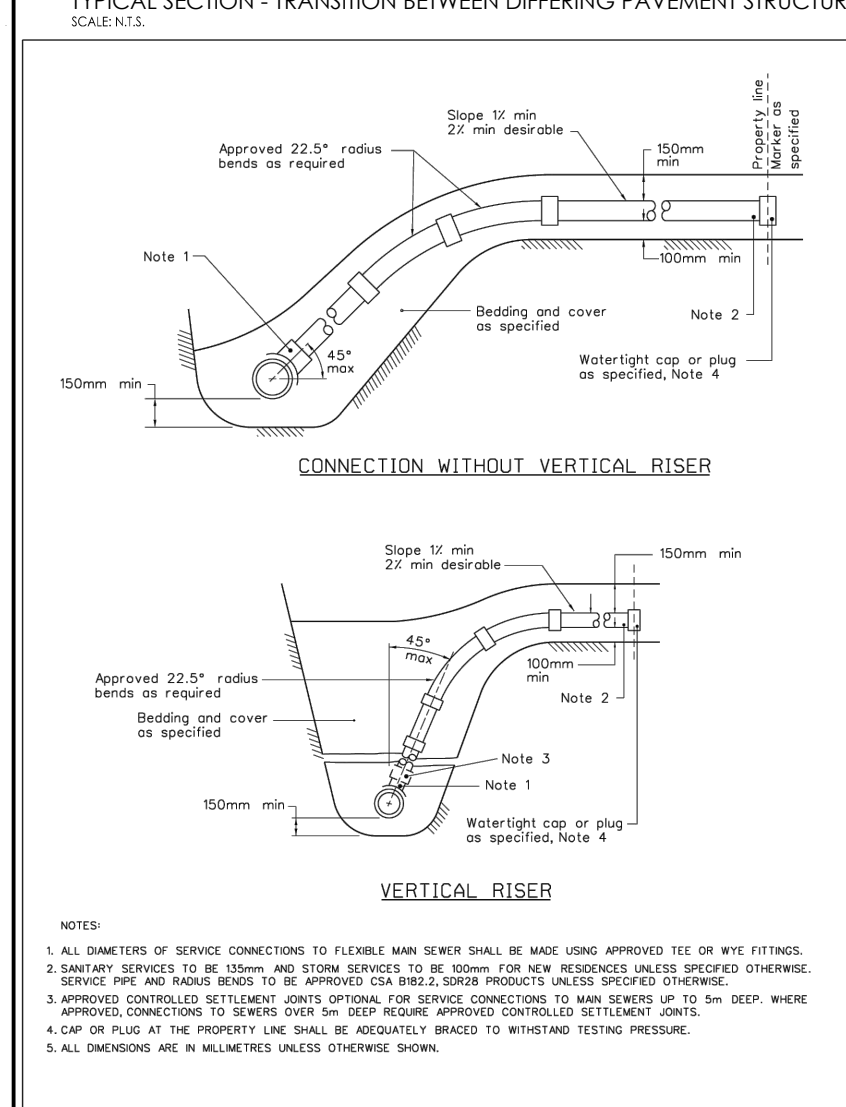
**TYPICAL SECTION - TRANSITION BETWEEN DIFFERING PAVEMENT STRUCTURES**  
SCALE: N1:2



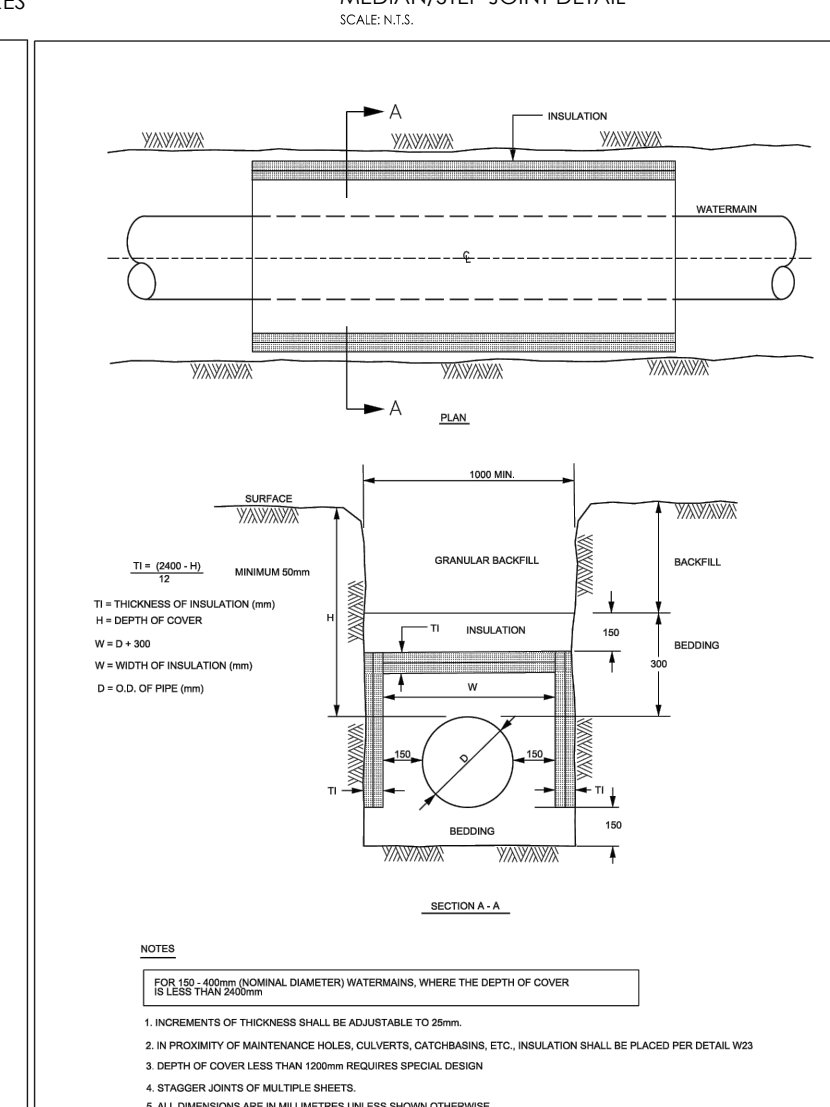
**MEDIAN/STEP JOINT DETAIL**  
SCALE: N1:1



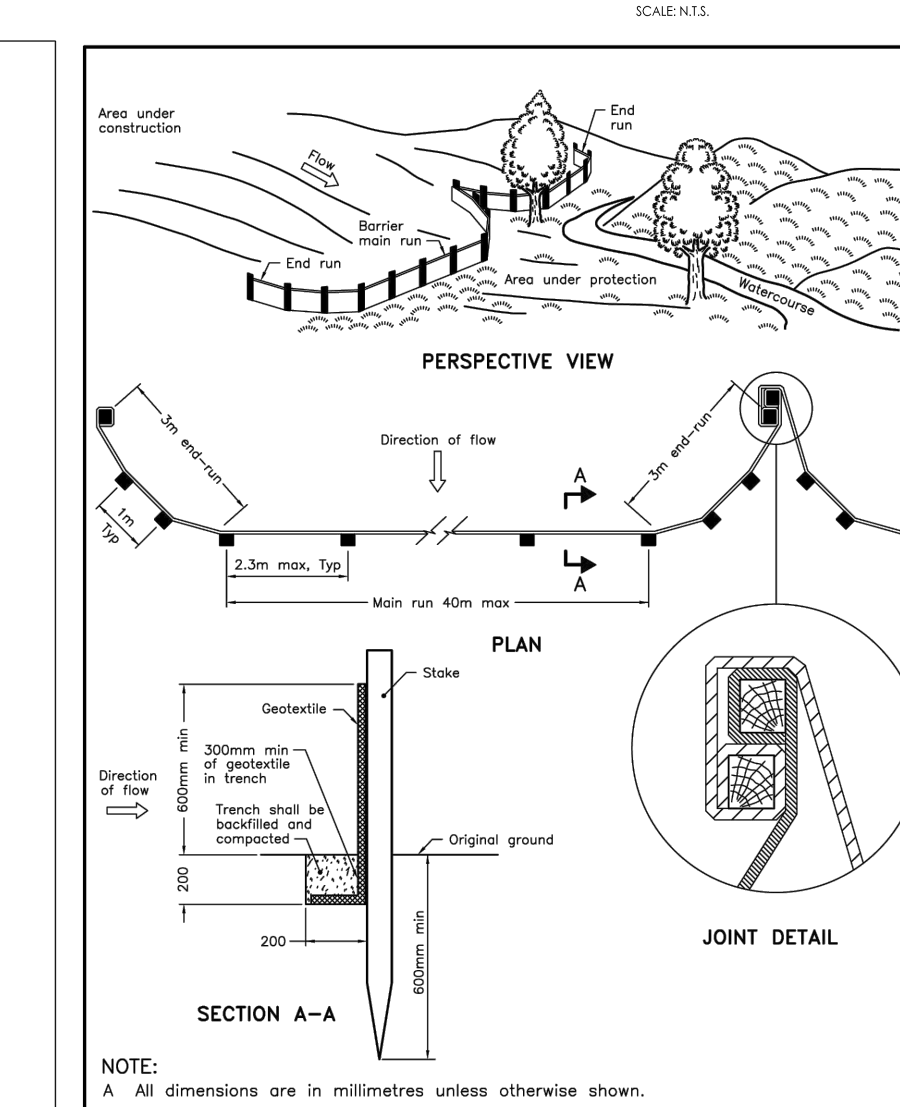
**BARRIER CURB END TREATMENT**  
SCALE: N1:1



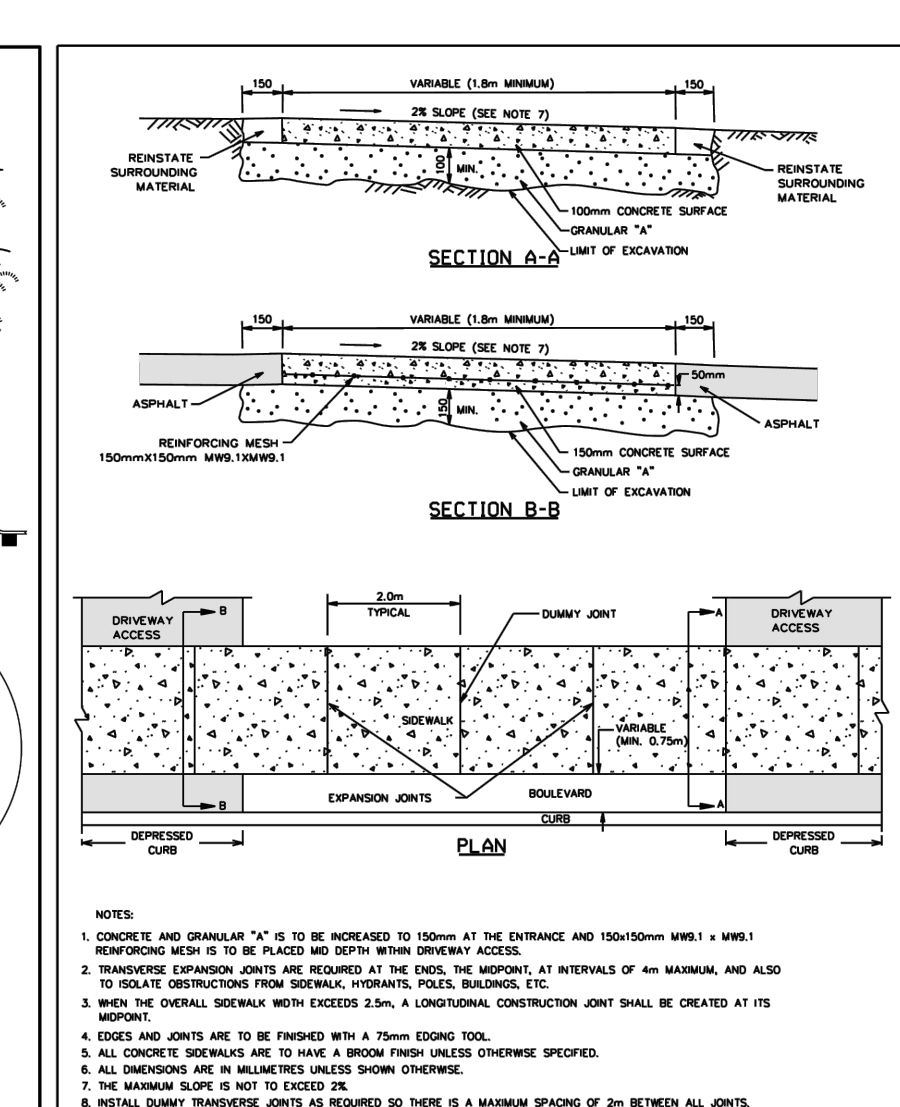
**SEWER SERVICE CONNECTIONS FOR FLEXIBLE MAIN SEWER PIPE (MODIFIED OPSD-1006.020)**  
DATE: MARCH 2008  
REV: MARCH 2013  
DWG. NO.: S11.1



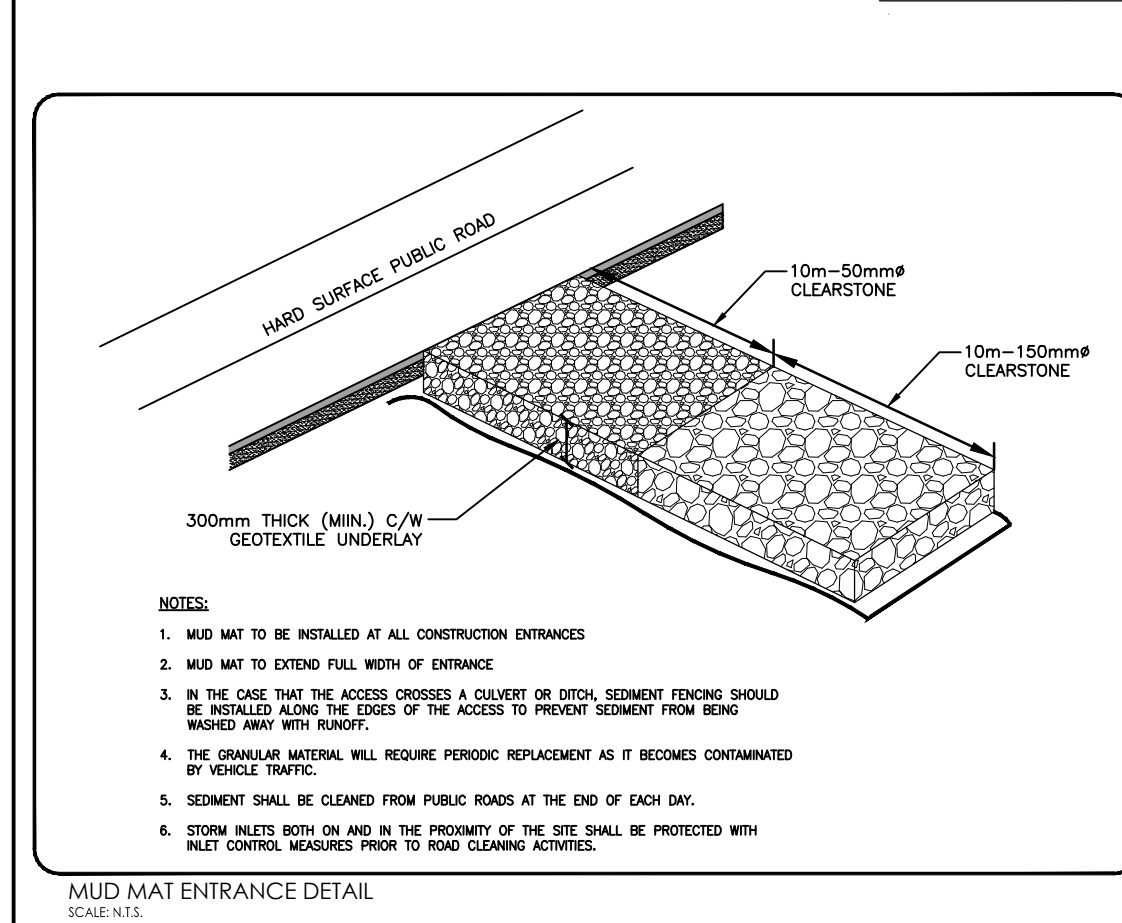
**THERMAL INSULATION FOR WATERMAINS IN SHALLOW TRENCHES**  
DATE: MAY 2001  
REV: MARCH 2012  
DWG. NO.: W22



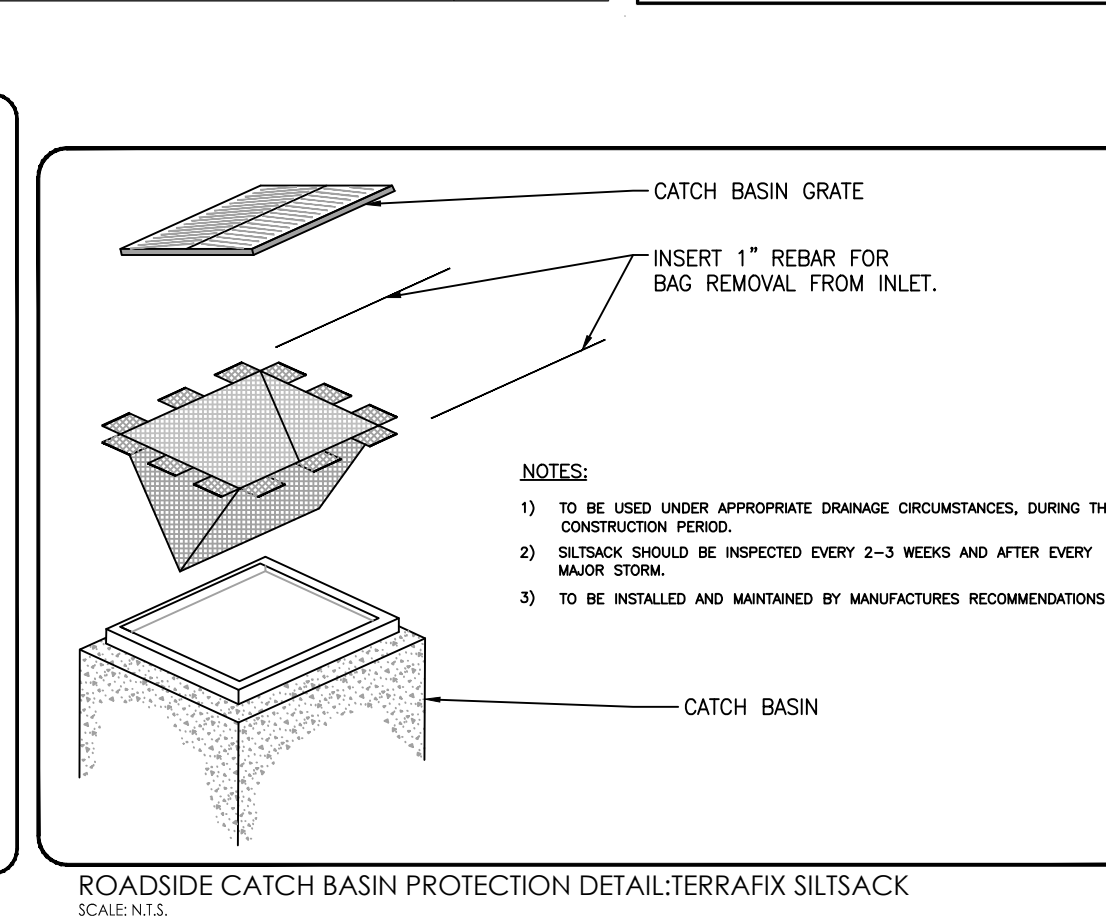
**LIGHT-DUTY SILT FENCE BARRIER**  
DATE: NOV 2021  
REV: 1  
DWG. NO.: OPSD 219.110



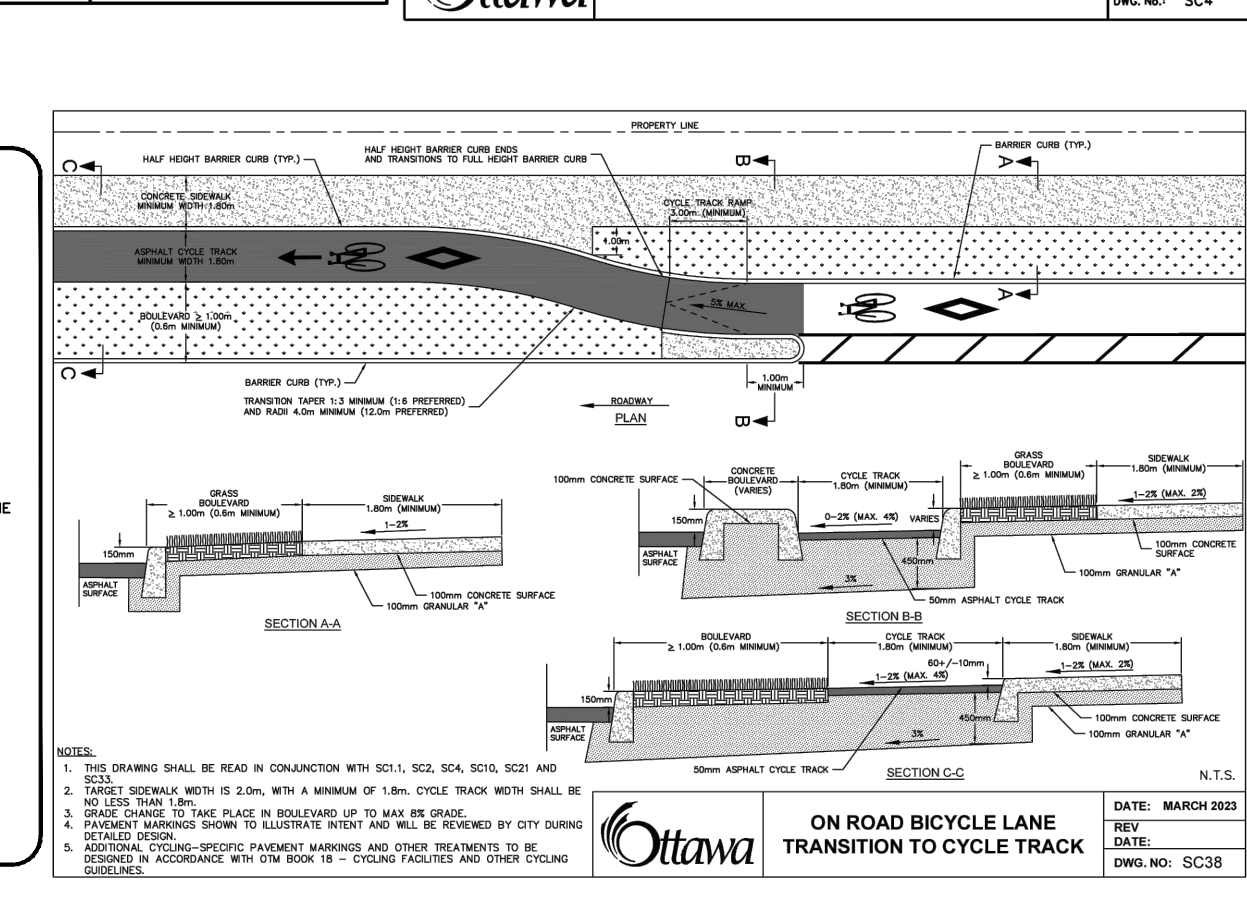
**TYPICAL CONCRETE SIDEWALK IN BOULEVARD**  
DATE: MAY 2007  
REV: MARCH 2006  
DWG. NO.: SC4



**MUD MAT ENTRANCE DETAIL**  
SCALE: N1:1



**ROADSIDE CATCH BASIN PROTECTION DETAIL-TERRAFIX SILT SACK**  
SCALE: N1:1



**ON ROAD BICYCLE LANE TRANSITION TO CYCLE TRACK**  
DATE: MARCH 2023  
REV: MARCH 2023  
DWG. NO.: SC38