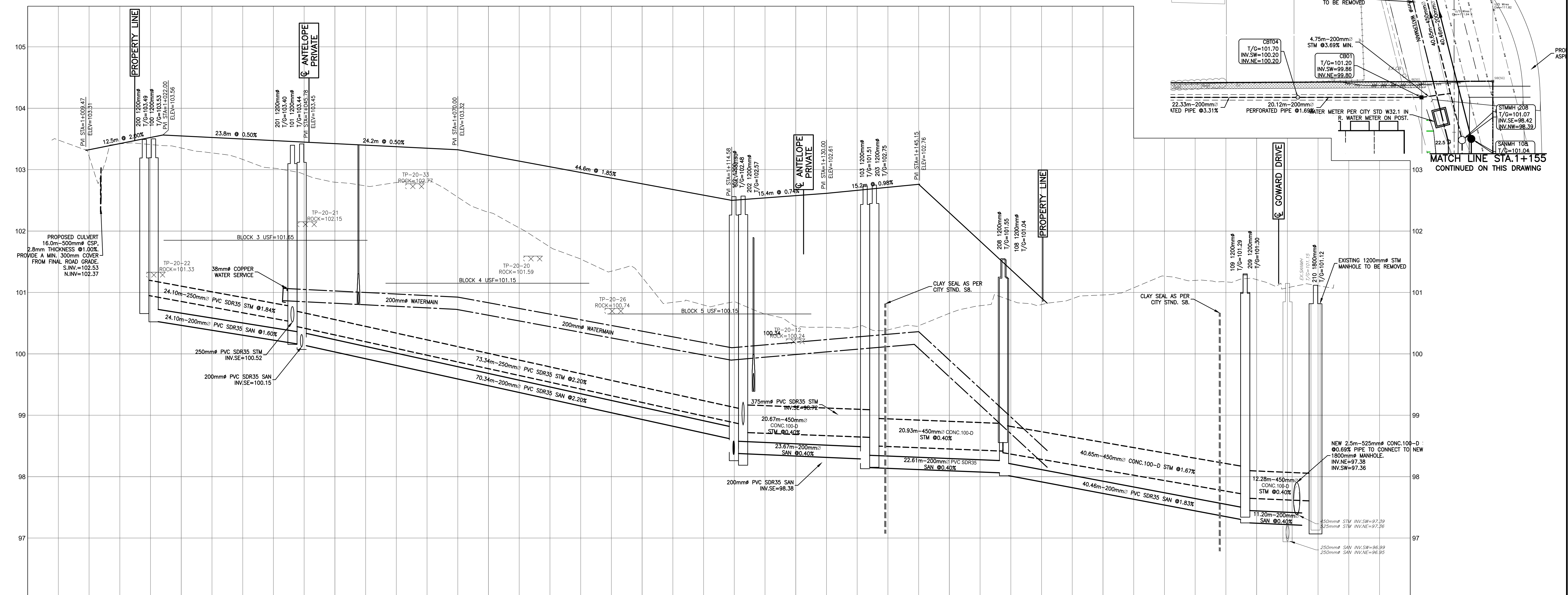
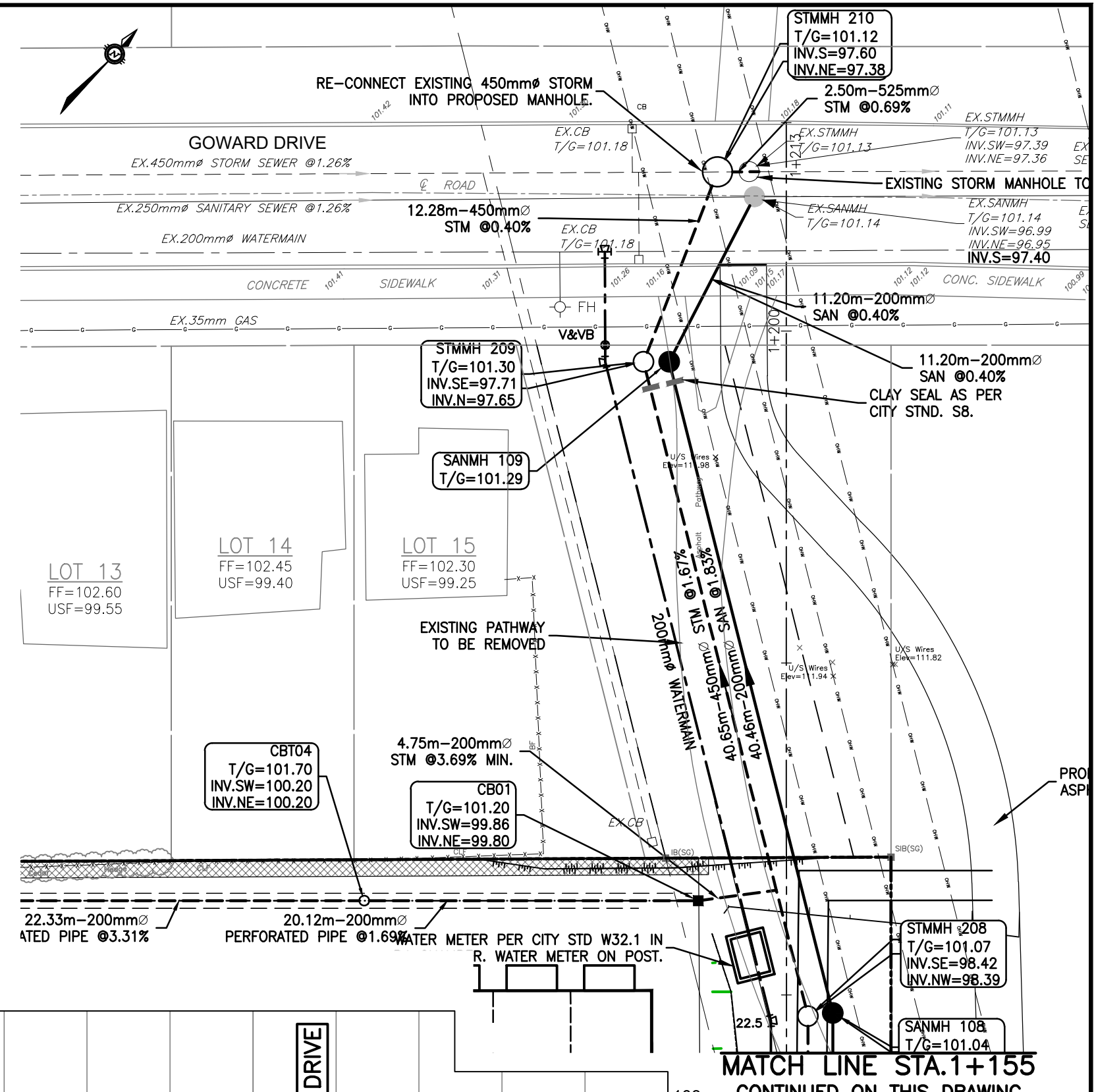
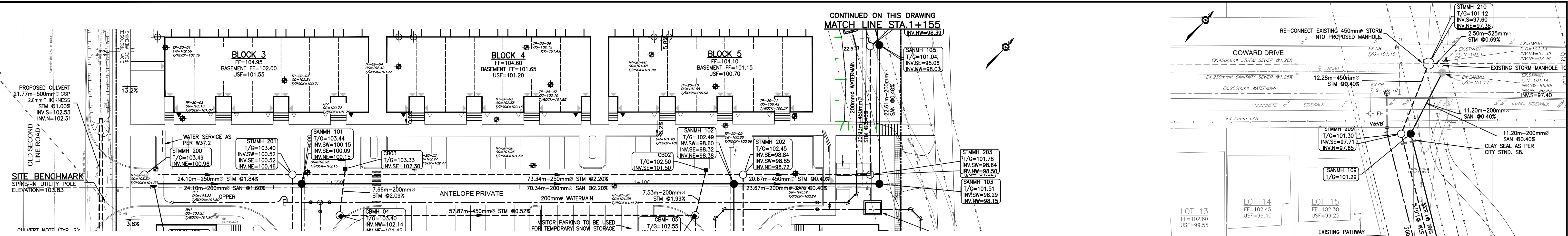


CONTINUED ON THIS DRAWING  
MATCH LINE STA. 1+155



CHAINAGE	ELEVATIONS PROPOSED	TOP OF WATERMAIN ELEVATION	STORM SEWER INVERTS	SANITARY SEWER INVERTS	ELEVATION PROPOSED EXISTING	TOP OF WATERMAIN ELEVATION	STORM SEWER INVERTS	SANITARY SEWER INVERTS
1+000	103.32	101.07	21.77m-500mm <sup>Ø</sup> STM 1.00%	100.96 NE	103.32	101.07	97.71 SE	100.96 NE
1+019	103.42	101.05	24.10m-250mm <sup>Ø</sup> PVC SDR35 STM 1.84%	100.54 NE	103.42	101.05	97.65 SE	100.54 NE
1+020	103.52	101.04	24.10m-200mm <sup>Ø</sup> PVC SDR35 SAN 1.60%	100.15 NE	103.52	101.04	97.59 SE	100.15 NE
1+040	103.55	101.01	73.34m-250mm <sup>Ø</sup> PVC SDR35 STM 2.20%	100.15 NE	103.55	101.01	97.50 SE	100.15 NE
1+050	103.52	100.97	70.34m-200mm <sup>Ø</sup> PVC SDR35 SAN 2.20%	100.09 SE	103.52	100.97	97.42 SE	100.09 SE
1+075	103.47	100.92	20.67m-450mm <sup>Ø</sup> CONC.100-D STM 0.40%	99.89 SE	103.47	100.92	97.36 SE	99.89 SE
1+080	103.45	100.86	20.93m-450mm <sup>Ø</sup> CONC.100-D STM 1.67%	99.85 SE	103.45	100.86	97.30 SE	99.85 SE
1+082	103.45	100.86	40.65m-450mm <sup>Ø</sup> CONC.100-D STM 1.67%	99.85 SE	103.45	100.86	97.30 SE	99.85 SE
1+086	103.45	100.86	40.46m-200mm <sup>Ø</sup> PVC SDR35 SAN 1.83%	99.85 SE	103.45	100.86	97.30 SE	99.85 SE
1+100	102.77	99.92	12.28m-450mm <sup>Ø</sup> CONC.100-D STM 0.40%	99.89 SE	102.77	99.92	97.21 SE	99.89 SE
1+105	102.69	99.89	11.20m-200mm <sup>Ø</sup> PVC SDR35 SAN 0.40%	99.89 SE	102.69	99.89	97.21 SE	99.89 SE
1+110	102.58	99.89	NEW 2.5m-525mm <sup>Ø</sup> CONC.100-D 0.69% PIPE TO CONNECT TO NEW 180mm <sup>Ø</sup> MANHOLE. INV.NE=97.38	99.89 SE	102.58	99.89	97.21 SE	99.89 SE
1+114	102.50	99.89		99.89 SE	102.50	99.89	97.21 SE	99.89 SE
1+116	102.54	99.89		99.89 SE	102.54	99.89	97.21 SE	99.89 SE
1+120	102.54	99.89		99.89 SE	102.54	99.89	97.21 SE	99.89 SE
1+124	102.58	99.89		99.89 SE	102.58	99.89	97.21 SE	99.89 SE
1+125	102.58	99.89		99.89 SE	102.58	99.89	97.21 SE	99.89 SE
1+133	102.61	99.89		99.89 SE	102.61	99.89	97.21 SE	99.89 SE
1+136	102.66	99.89		99.89 SE	102.66	99.89	97.21 SE	99.89 SE
1+137	102.71	99.89		99.89 SE	102.71	99.89	97.21 SE	99.89 SE
1+140	102.76	99.89		99.89 SE	102.76	99.89	97.21 SE	99.89 SE
1+180	102.66	99.89		99.89 SE	102.66	99.89	97.21 SE	99.89 SE
1+181	102.66	99.89		99.89 SE	102.66	99.89	97.21 SE	99.89 SE
1+200	102.66	99.89		99.89 SE	102.66	99.89	97.21 SE	99.89 SE
1+208	102.66	99.89		99.89 SE	102.66	99.89	97.21 SE	99.89 SE
1+209	102.66	99.89		99.89 SE	102.66	99.89	97.21 SE	99.89 SE
1+220	102.66	99.89		99.89 SE	102.66	99.89	97.21 SE	99.89 SE
1+225	102.66	99.89		99.89 SE	102.66	99.89	97.21 SE	99.89 SE

**CAUTION**  
THE POSITION OF ALL POLE LINES, CONDUITS, WATERMANS, SEWERS AND OTHER UNDERGROUND UTILITIES AND STRUCTURES IS NOT NECESSARILY SHOWN ON THE CONTRACT DRAWINGS, AND WHERE SHOWN, THE ACCURACY OF THE POSITION OF SUCH UTILITIES AND STRUCTURES IS NOT GUARANTEED. BEFORE STARTING WORK, DETERMINE THE EXACT LOCATION OF ALL SUCH UTILITIES AND STRUCTURES AND ASSUME ALL LIABILITY FOR DAMAGE TO THEM.

SCALE  
1:300  
HORIZONTAL

DESIGNED BY: B.M. THOMAS  
REVIEWED BY: B.M. THOMAS  
DATE: 14/06/23

PROJECT: SECOND LINE ROAD  
1158 OLD SECOND LINE ROAD  
KANATA, ONTARIO.

TITLE: PROFILE ANTELOPE PRIVATE  
STA. 1+000 TO STA. 1+225

1 ISSUED FOR APPROVAL 14/06/23 SAB BMT

REV REVISION DESCRIPTION DATE BY APPD

THEBERGE HOMES  
1600 LAPERRIERE AVENUE, SUITE 205  
OTTAWA, ON. K1Z 8P5  
613.421.1515

PROJECT: OTT-00245003-A1  
SURVEY: FSD  
DATE: JUNE 2023  
DRAWING NO.: C05