

GENERAL NOTES:

- 1. ALL WORKS AND MATERIALS SHALL CONFORM TO THE LATEST REVISIONS OF THE STANDARDS AND SPECIFICATIONS OF THE CITY OF OTTAWA, ONTARIO PROVINCIAL STANDARD DRAWINGS (OPSD) AND SPECIFICATIONS (OPSS), WHERE APPLICABLE.
2. THE LOCATION OF UTILITIES IS APPROXIMATE ONLY, AND THE EXACT LOCATION SHOULD BE DETERMINED BY CONSULTING THE MUNICIPAL AUTHORITIES AND UTILITY COMPANIES CONCERNED.

SANITARY SEWER NOTES:

- 1. ALL SANITARY SEWER MATERIALS AND INSTALLATION SHALL CONFORM TO THE LATEST REVISIONS OF THE STANDARDS AND SPECIFICATIONS OF THE CITY OF OTTAWA, ONTARIO PROVINCIAL STANDARD DRAWINGS (OPSD) AND SPECIFICATIONS (OPSS).
2. ALL SANITARY SEWERS SHALL BE PVC SDR 35, IPEX "RING-TITE" (OR EQUIVALENT), AS PER CSA STANDARD B182.2 OR LATEST AMENDMENT, UNLESS OTHERWISE NOTED.

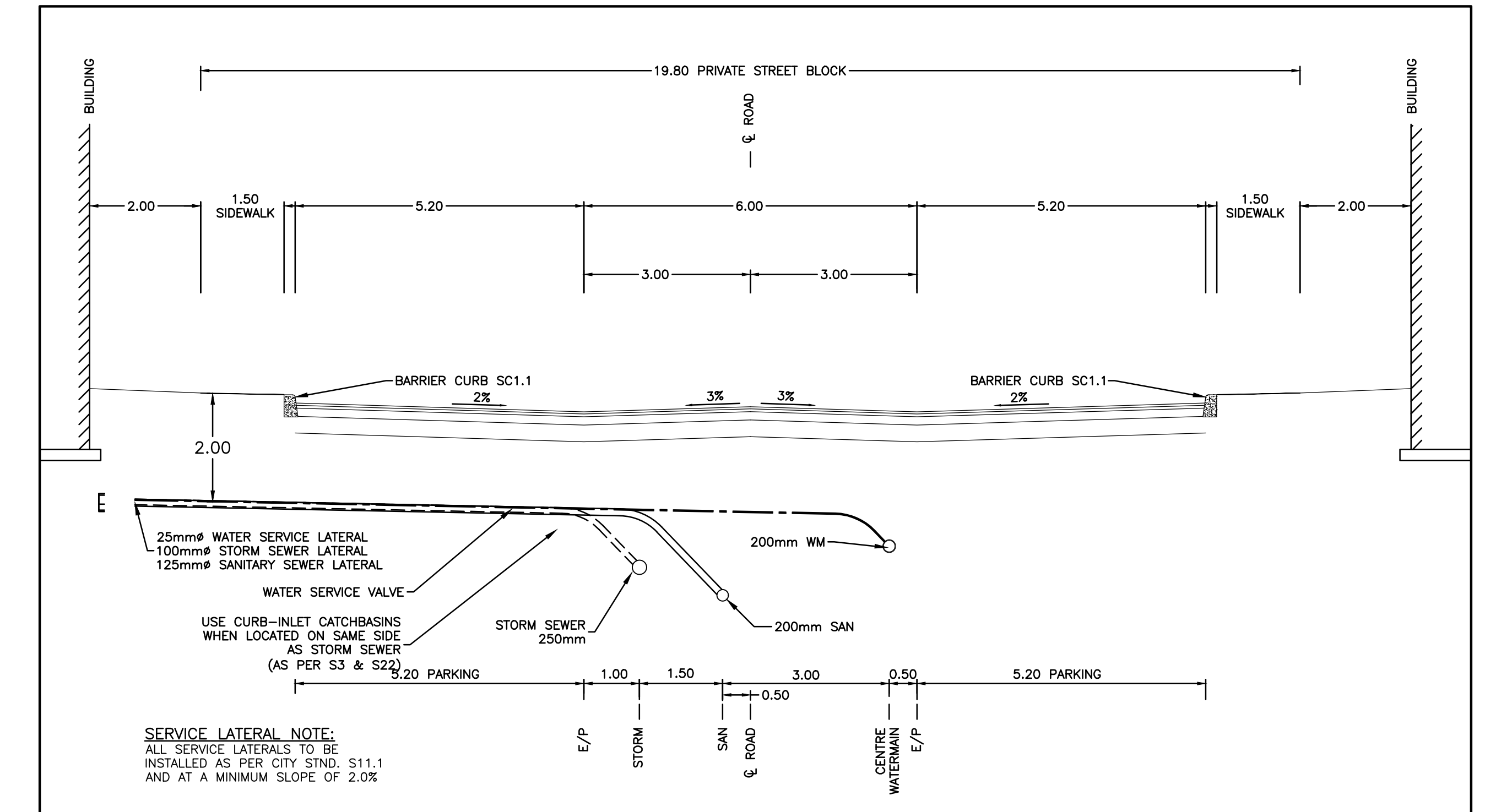
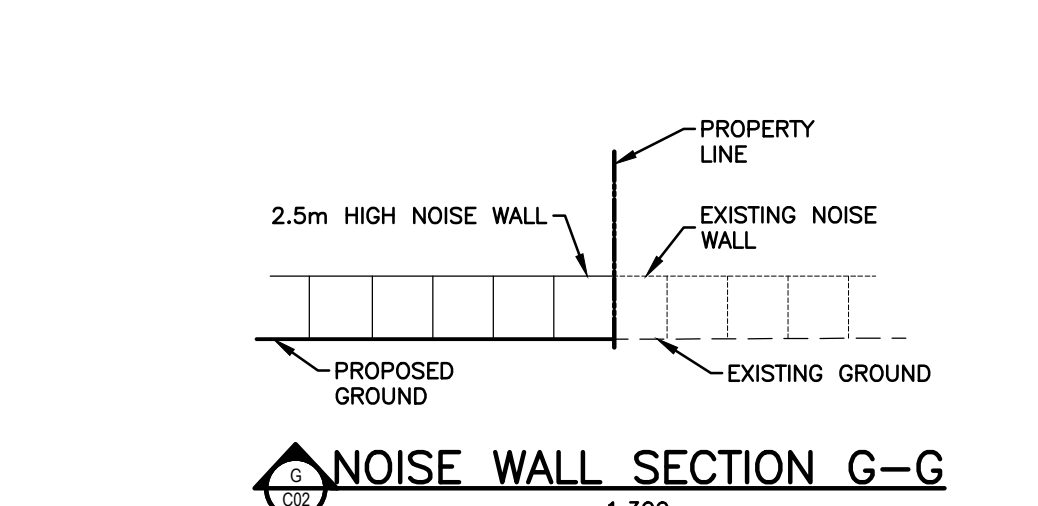
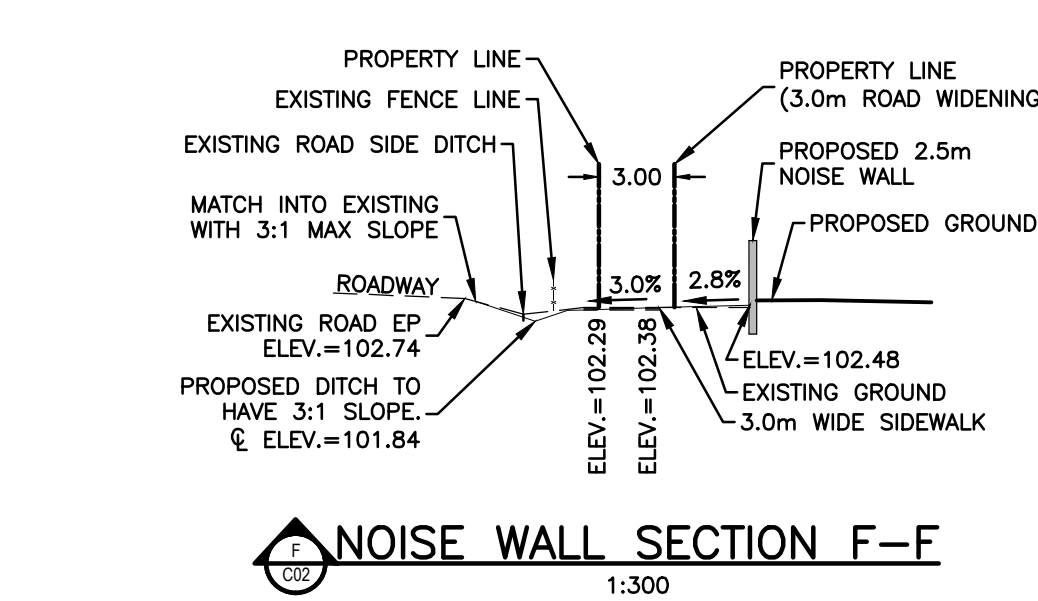
STORM SEWER NOTES:

- 1. ALL STORM SEWER MATERIALS AND INSTALLATION SHALL CONFORM TO THE LATEST REVISIONS OF THE STANDARDS AND SPECIFICATIONS OF THE CITY OF OTTAWA, ONTARIO PROVINCIAL STANDARD DRAWINGS (OPSD) AND SPECIFICATIONS (OPSS).
2. ALL REINFORCED CONCRETE STORM SEWER PIPE SHALL BE IN ACCORDANCE WITH CSA A257.2 (LATEST AMENDMENT).

- 11. STORM MANHOLES AS PER OPSD 701.010 UNLESS OTHERWISE NOTED. STORM MANHOLE FRAME AND COVERS SHALL BE AS PER CITY OF OTTAWA STD. S24, S24.1 AND S25.
12. STORM MANHOLES STM1H 201, 202, 203 AND 206 REQUIRE SEALED LIDS (S24.1) WITH THE 25mm HOLES TO HAVE APPROVED RUBBER PLUGS.

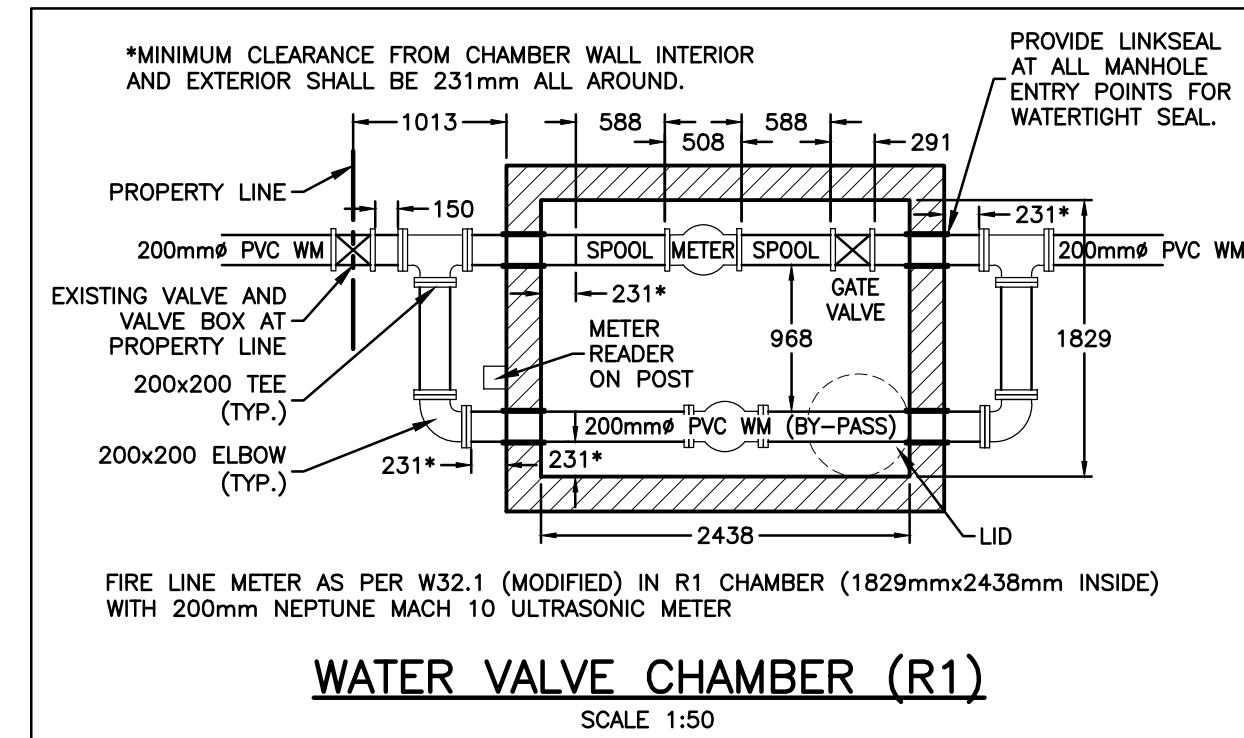
WATERMAIN NOTES:

- 1. ALL WATERMAIN MATERIALS AND INSTALLATION SHALL CONFORM TO THE LATEST REVISIONS OF THE STANDARDS AND SPECIFICATIONS OF THE CITY OF OTTAWA, ONTARIO PROVINCIAL STANDARD DRAWINGS (OPSD) AND SPECIFICATIONS (OPSS).
2. NO WORK SHALL COMMENCE UNLESS A CITY WATER WORKS INSPECTOR IS ON SITE.

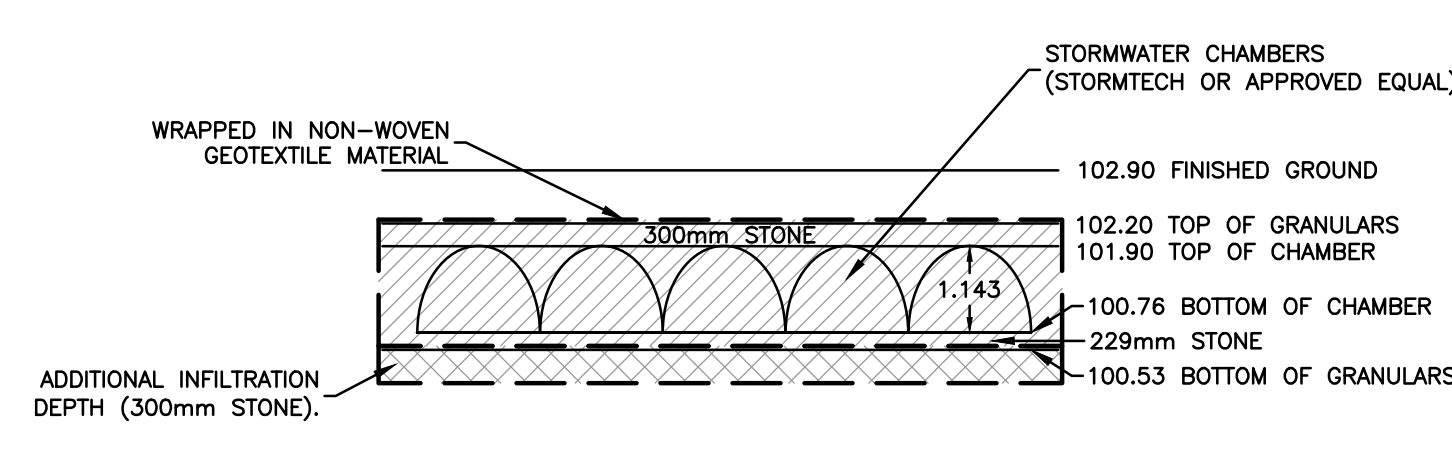


SERVICE LATERAL NOTE: ALL SERVICE LATERALS TO BE INSTALLED AS PER CITY STD. S11.1 AND AT A MINIMUM SLOPE OF 2.0%

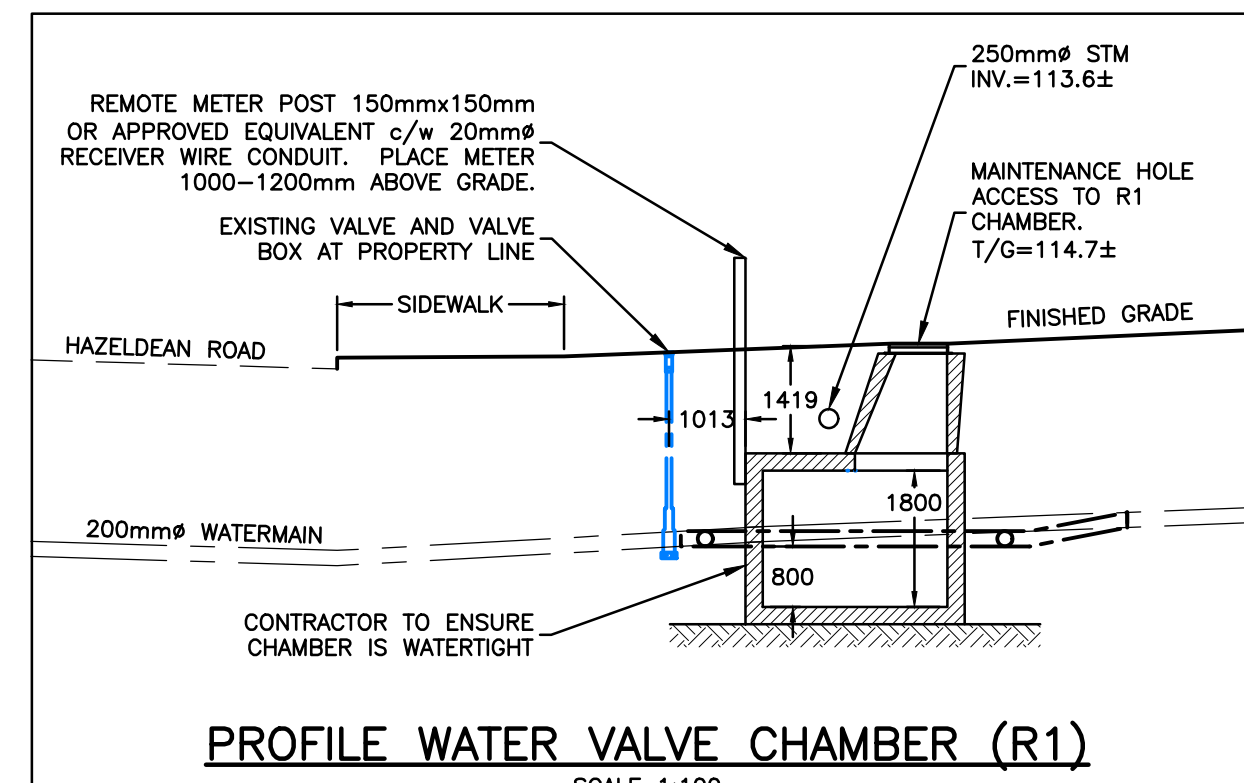
TYPICAL ROAD CROSS SECTION 1:75



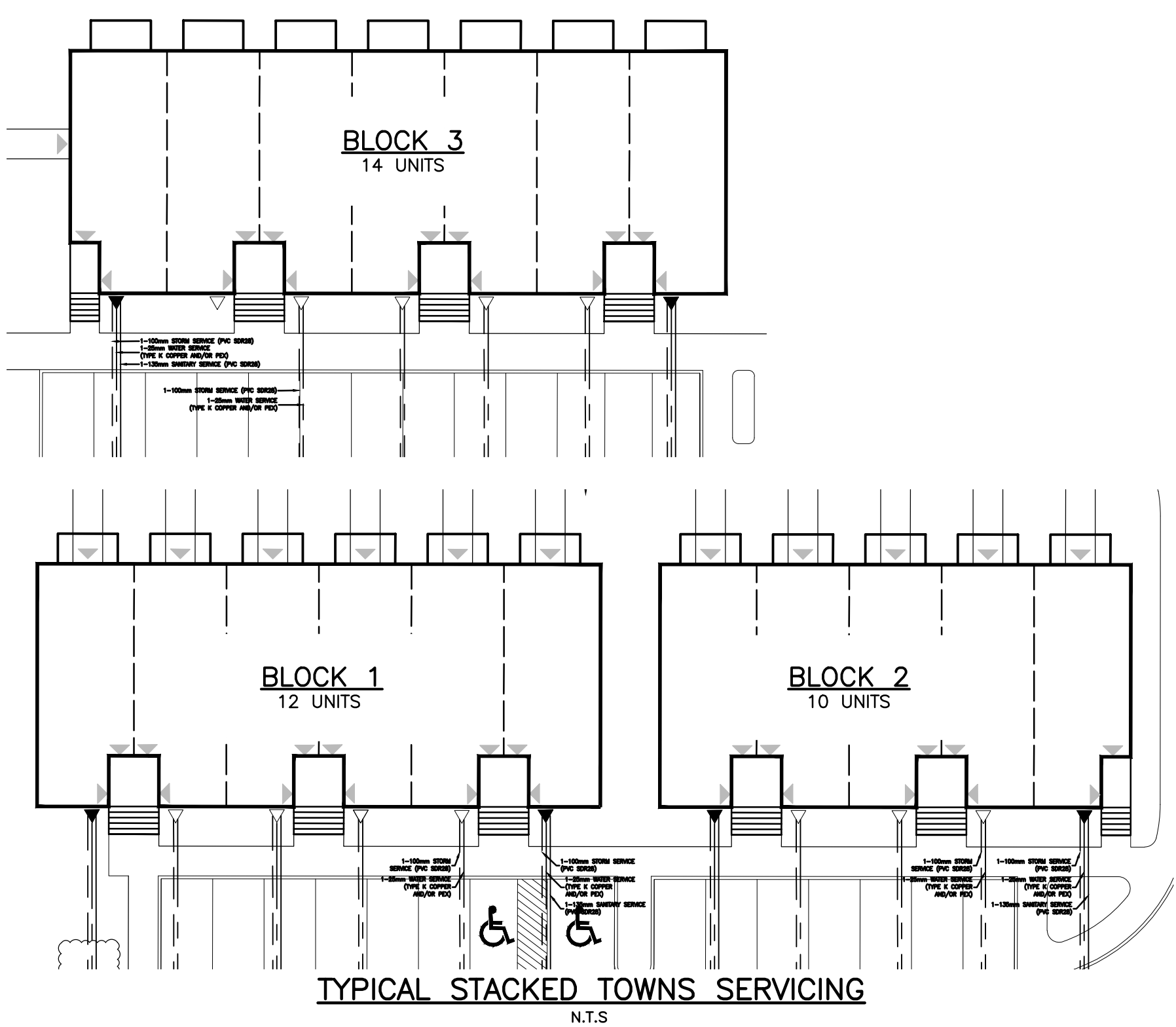
WATER VALVE CHAMBER (R1) SCALE 1:50



STORM CHAMBERS - CROSS SECTION N.T.S.



PROFILE WATER VALVE CHAMBER (R1) SCALE 1:100



TYPICAL STACKED TOWNS SERVICING N.T.S.

- 19. CLAY SEALS TO BE INSTALLED FOR PIPE TRENCHES AS PER CITY STD. S8 WHERE SHOWN ON THE DRAWINGS.
ROADWAY SPECIFICATIONS
1. ALL TOPSOIL AND ORGANIC MATERIAL SHALL BE STRIPPED WITHIN THE ROAD ALLOWANCE PRIOR TO THE COMMENCEMENT OF CONSTRUCTION.

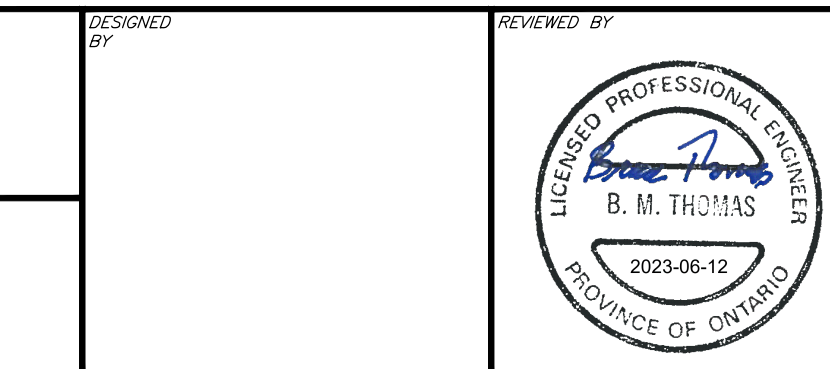
- ROADWAY ON OVERBURDEN SUBGRADE
- 40mm SUPERPAVE 12.5 CATEGORY B
- 50mm SUPERPAVE 19.0 CATEGORY B
- 150mm GRANULAR "A" CRUSHED LIMESTONE (OPSS 1010)
- 300mm GRANULAR "B" TYPE II (OPSS 1010)

GENERAL NOTES FOR GRADING:

- 1. IT SHALL BE THE BUILDER'S RESPONSIBILITY TO ENSURE THAT GRADING AROUND HYDRANTS, TRANSFORMERS, AND UTILITY PEDESTALS, ETC., MEET CURRENT CITY OF OTTAWA, HYDRO AND UTILITY COMPANY REQUIREMENTS.

CAUTION THE POSITION OF ALL POLE LINES, CONDUITS, WATERMANS, SEWERS AND OTHER UNDERGROUND AND OVERGROUND UTILITIES AND STRUCTURES IS NOT NECESSARILY SHOWN ON THE CONTRACT DRAWINGS, AND WHERE SHOWN, THE ACCURACY OF THE POSITION OF SUCH UTILITIES AND STRUCTURES IS NOT GUARANTEED.

Table with columns: REV, REVISION DESCRIPTION, DATE, BY, APPD, REV, REVISION DESCRIPTION, DATE, BY, APPD.



THEBERGE HOMES 1600 LAPERRIERE AVENUE, SUITE 205 OTTAWA, ON. K1Z 8P5 613.421.1515

Table with columns: BASEPLAN, PROJECT, DESIGN, CHECKED, CAD, PROJECT MANAGER, APPROVED.

SECOND LINE ROAD 1158 OLD SECOND LINE ROAD KANATA, ONTARIO. NOTES AND DETAIL SHEET C03