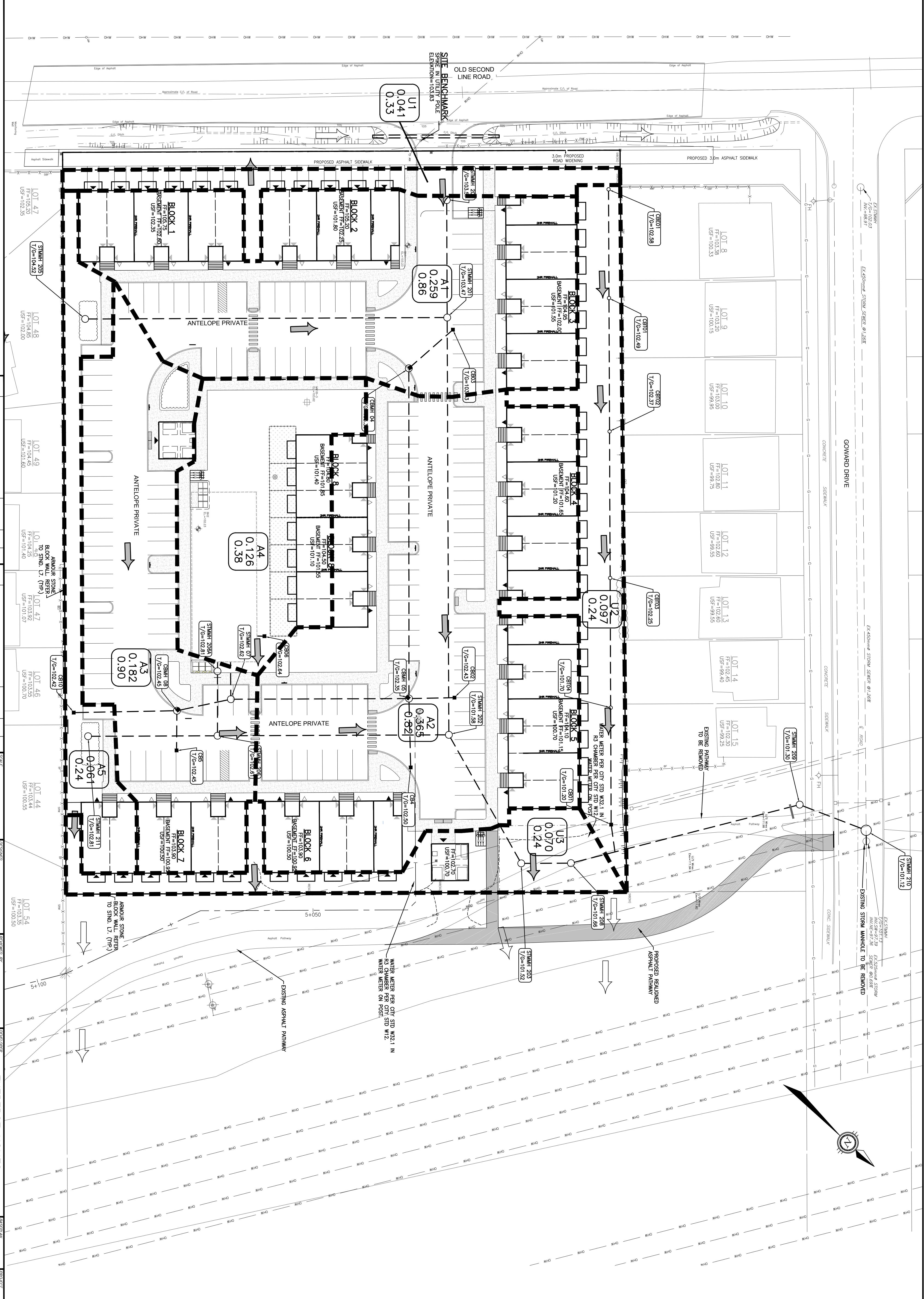


**CAUTION:** OF ALL POLE LINES, CONDUITS, WATERMANS, SEWERS AND OTHER UNDERGROUND AND OVERGROUND UTILITIES SHOWN ON THIS PLAN. THE LOCATION AND DEPTH OF SUCH UTILITIES AND BEFORE STARTING WORK, DETERMINE THE EXACT LOCATION OF ALL SUCH UTILITIES AND DAMAGE TO THEM.



REV	DESCRIPTION	DATE	BY	APP
1	ISSUED FOR APPROVAL	14/06/23	SAB	BMT
2	REVISED PER CITY COMMENTS	17/11/23	AMS	BMT

SCALE	DATE	BY
1:300	11/17/23	SAB

PROJECT NO.	PROJECT NAME
02-025903-AN	SECOND LINE ROAD CATCHMENTS

DESIGNER	DATE	BY
AS	11/17/23	SAB

PROJECT NO.	PROJECT NAME
02-025903-AN	SECOND LINE ROAD CATCHMENTS

DESIGNER	DATE	BY
AS	11/17/23	SAB

PROJECT NO.	PROJECT NAME
02-025903-AN	SECOND LINE ROAD CATCHMENTS

DESIGNER	DATE	BY
AS	11/17/23	SAB

PROJECT NO.	PROJECT NAME
02-025903-AN	SECOND LINE ROAD CATCHMENTS

DESIGNER	DATE	BY
AS	11/17/23	SAB

PROJECT NO.	PROJECT NAME
02-025903-AN	SECOND LINE ROAD CATCHMENTS

**exp.**  
 1600 LAPERRIERE AVENUE, SUITE 205  
 OTTAWA, ON, K1Z 8P5  
 613.421.1515

**THEBERGE HOMES**  
 1158 OLD SECOND LINE ROAD  
 KANATA, ONTARIO.

POST-DEVELOPMENT CATCHMENTS

**LEGEND**

- PROPERTY LINE
- ONSITE OVERLAND FLOW ROUTE
- EXTERNAL OVERLAND FLOW ROUTE
- AREA NO. 11
- AREA NO. 0259
- AREA NO. 020
- RUNOFF CONTRIBUTION CATCHMENT AREA



PROJECT NO.	PROJECT NAME
02-025903-AN	SECOND LINE ROAD CATCHMENTS

DESIGNER	DATE	BY
AS	11/17/23	SAB

PROJECT NO.	PROJECT NAME
02-025903-AN	SECOND LINE ROAD CATCHMENTS

DESIGNER	DATE	BY
AS	11/17/23	SAB