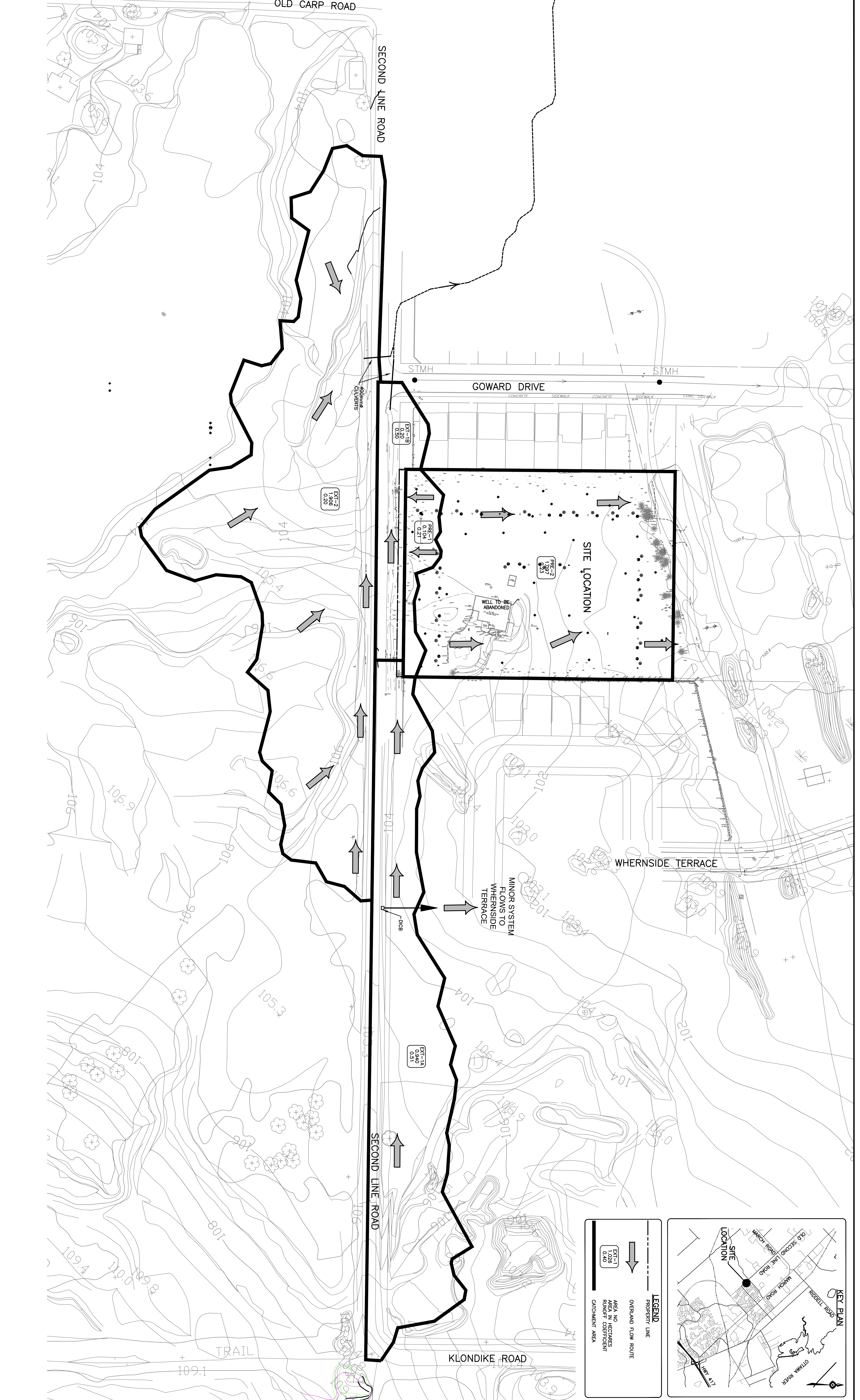


CAUTION: OF ALL POLE LINES, CONDUITS, WATERMANS, SEWERS AND OTHER UNDERGROUND AND OVERGROUND UTILITIES SHOWN ON THE CONTRACT DRAWINGS AND WHERE SHOWN, THE ACCURACY OF THE POSITION OF SUCH UTILITIES AND BEFORE STARTING WORK, DETERMINE THE EXACT LOCATION OF ALL SUCH UTILITIES AND DAMAGE TO THEM.



NO.	DATE	BY	DESCRIPTION
1	14/06/23	SAB	ISSUED FOR APPROVAL
2	17/11/23	AAS	REVISED PER CITY COMMENTS

NO.	DATE	BY	DESCRIPTION
1	14/06/23	SAB	ISSUED FOR APPROVAL
2	17/11/23	AAS	REVISED PER CITY COMMENTS

NO.	DATE	BY	DESCRIPTION
1	14/06/23	SAB	ISSUED FOR APPROVAL
2	17/11/23	AAS	REVISED PER CITY COMMENTS

NO.	DATE	BY	DESCRIPTION
1	14/06/23	SAB	ISSUED FOR APPROVAL
2	17/11/23	AAS	REVISED PER CITY COMMENTS

NO.	DATE	BY	DESCRIPTION
1	14/06/23	SAB	ISSUED FOR APPROVAL
2	17/11/23	AAS	REVISED PER CITY COMMENTS

NO.	DATE	BY	DESCRIPTION
1	14/06/23	SAB	ISSUED FOR APPROVAL
2	17/11/23	AAS	REVISED PER CITY COMMENTS

NO.	DATE	BY	DESCRIPTION
1	14/06/23	SAB	ISSUED FOR APPROVAL
2	17/11/23	AAS	REVISED PER CITY COMMENTS

LEGEND

- PROPERTY LINE
- OVERLAND FLOW ROUTE
- AREA NO. HECTARES
- RUNOFF COEFFICIENT
- CATCHMENT AREA

KCT PLAN



THEBERGE HOMES
 1600 LAPERRIERE AVENUE, SUITE 205
 OTTAWA, ON, K1Z 8P5
 613.421.1515

DESIGNED BY	CHECKED BY	DATE
SAB	AS	

PROJECT
 SECOND LINE ROAD
 1158 OLD SECOND LINE ROAD
 KANATA, ONTARIO.

DATE
 JUNE 2023

PROJECT NO.
 0045024003-A1

SCALE
 1:300