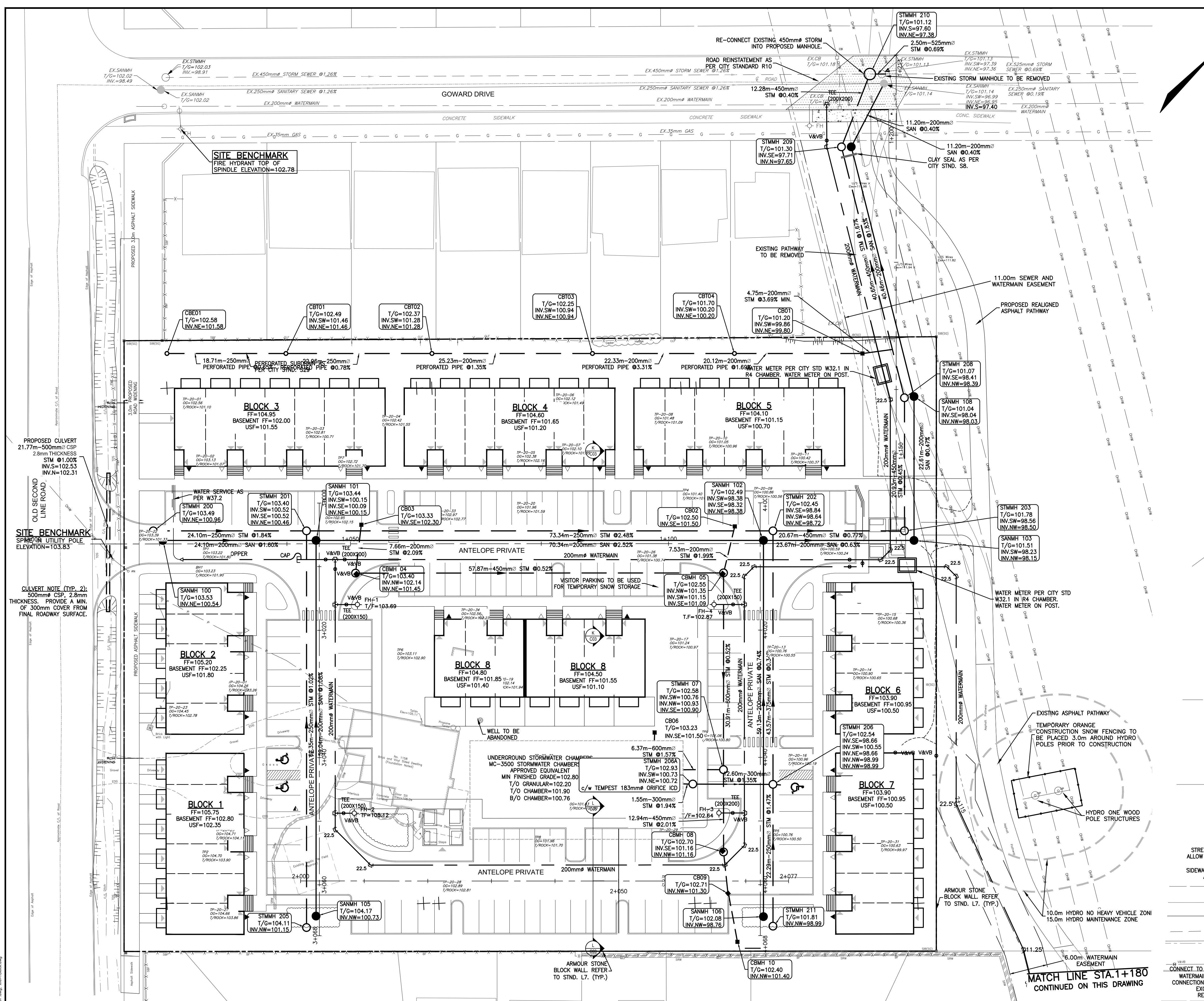


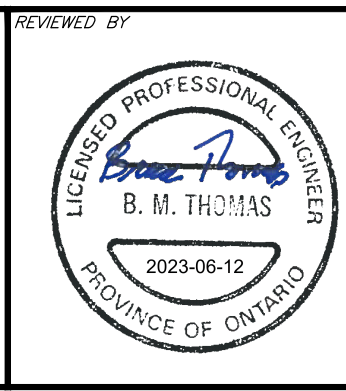
CONTINUED ON THIS DRAWING
MATCH LINE STA.1+180

STREETLIGHT TO BE RELOCATED TO ALLOW FOR WATERMAIN INSTALLATION
SIDEWALK AND CURB REINSTATEMENT AS PER CITY STANDARD S07.2
ROAD REINSTATEMENT AS PER CITY STANDARD R10
WHERRSIDE TERRACE
CONNECT TO EXISTING 200mm PVC DRI & WATERMAIN @ T/W=+99.50. WATERMAIN CONNECTION BY CITY OF OTTAWA FORCES. EXCAVATION, BACKFILL AND ROAD REINSTATEMENT BY CONTRACTOR.



CAUTION
THE POSITION OF ALL POLE LINES, CONDUITS, WATERMANS, SEWERS AND OTHER UNDERGROUND AND OVERGROUND UTILITIES AND STRUCTURES IS NOT NECESSARILY SHOWN ON THE CONTRACT DRAWINGS, AND WHERE SHOWN, THE ACCURACY OF THE POSITION OF SUCH UTILITIES AND STRUCTURES IS NOT GUARANTEED. BEFORE STARTING WORK, DETERMINE THE EXACT LOCATION OF ALL SUCH UTILITIES AND STRUCTURES AND ASSUME ALL LIABILITY FOR DAMAGE TO THEM.

NO.	ISSUED FOR APPROVAL	DATE	BY	APPD
1	ISSUED FOR APPROVAL	14/06/23	SAB	BMT
REV	REVISION DESCRIPTION			



DESIGNED BY: THEBERGE HOMES
1600 LAPERRIERE AVENUE, SUITE 205
OTTAWA, ON. K1Z 8P5
613.421.1515

exp. SERVICES INC.
1-813-688-1899 | 1-613-225-7330
3655 DUNDAS STREET WEST, UNIT 100
Dundas, ON. N3B 8H6
Canada
www.exp.com

• BUILDINGS • EARTH & ENVIRONMENT • ENERGY •
• INDUSTRIAL • INFRASTRUCTURE • SUSTAINABILITY •

PROJECT	CLIENT	PROJECT NO.
SECOND LINE ROAD 1158 OLD SECOND LINE ROAD KANATA, ONTARIO.	THEBERGE HOMES	OTT-00245003-A1
DATE	DRAWING NO.	
JUNE 2023	C01	