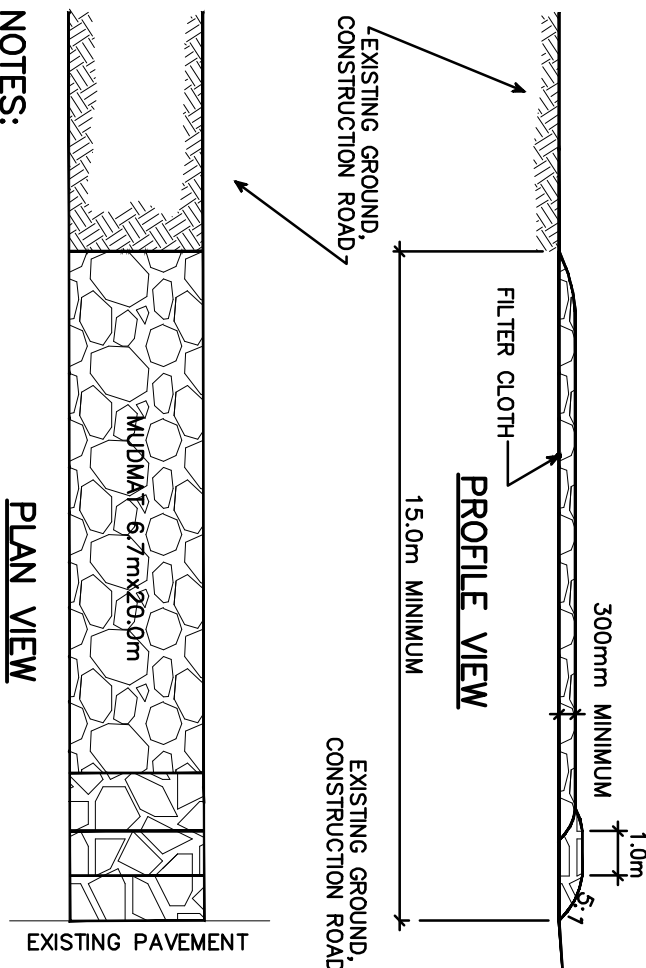
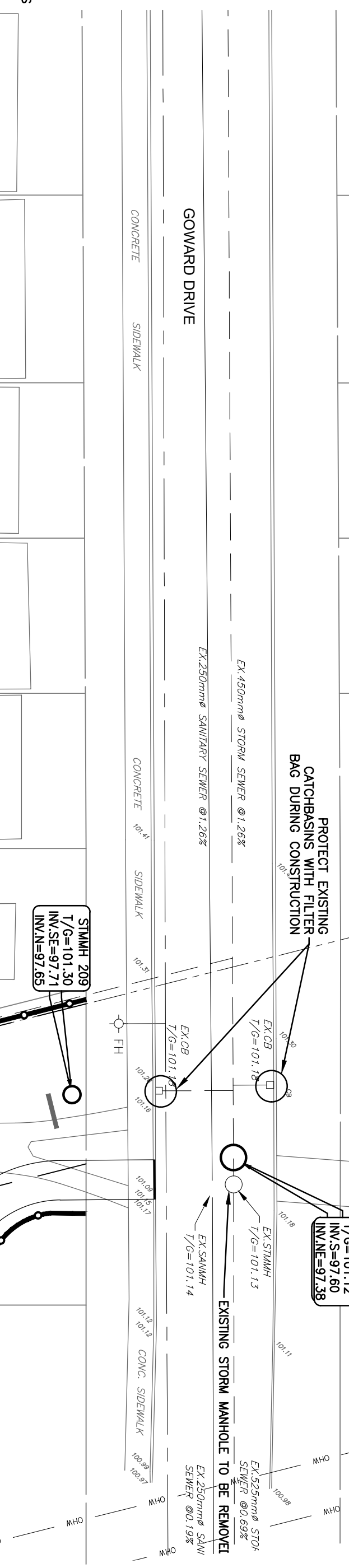
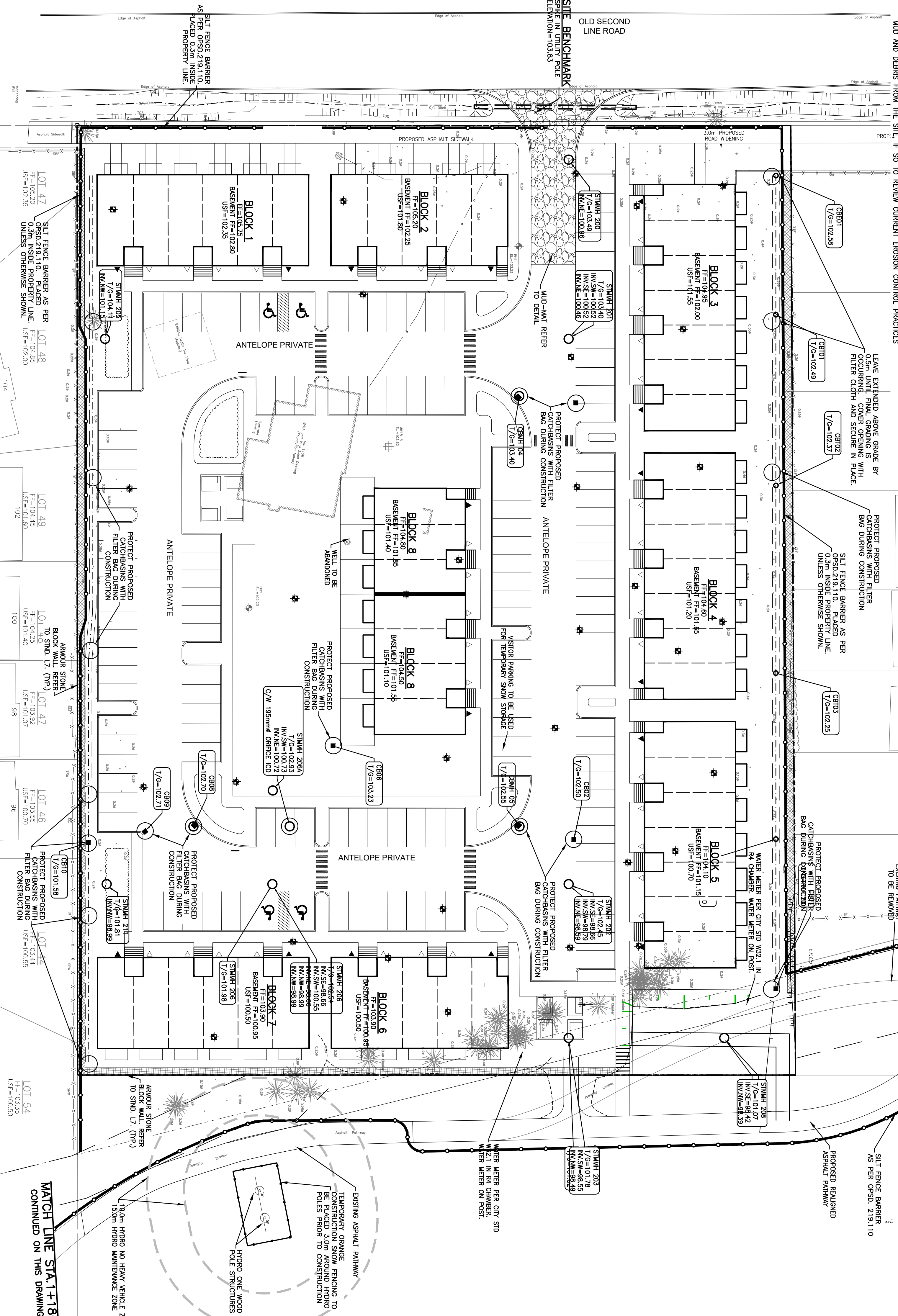


### EROSION AND SEDIMENT CONTROLS DURING CONSTRUCTION

DURING ALL CONSTRUCTION ACTIVITIES, EROSION AND SEDIMENTATION SHALL BE CONTROLLED BY THE FOLLOWING TECHNIQUES:

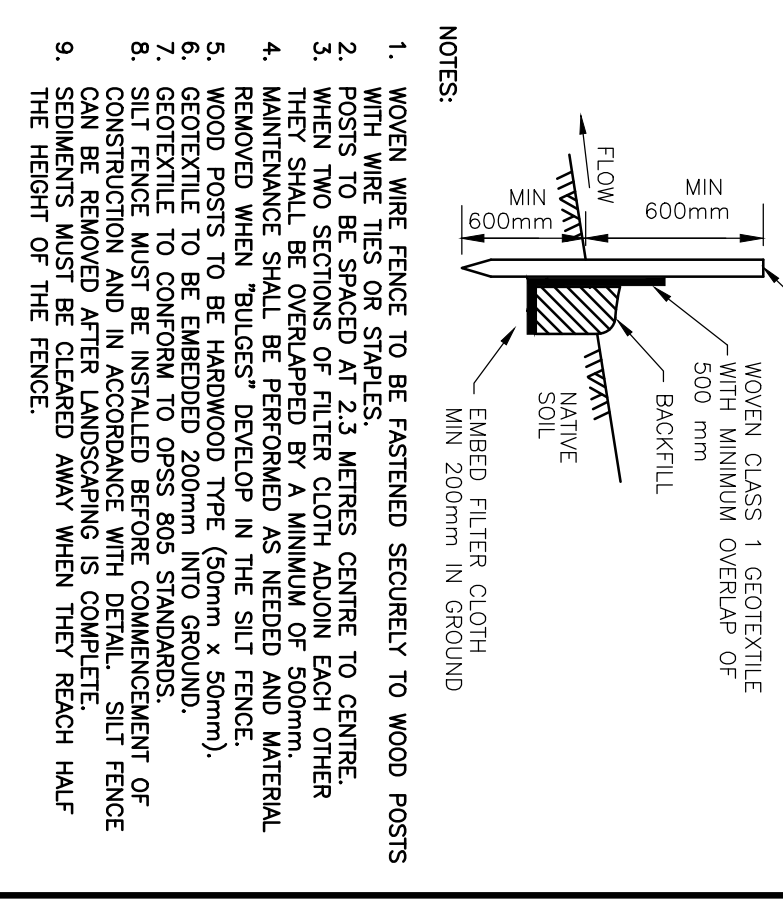
1. LIMITING THE EXTENT OF EXPOSED SOILS AT ANY GIVEN TIME.
2. REVEGETATION OF EXPOSED AREAS AS SOON AS POSSIBLE.
3. MINIMIZATION OF AREA TO BE CLEARED AND DISRUPTION TO ADJACENT AREAS.
4. INSTALLATION OF FILTER BAGS IN ALL PROPOSED CATCH BASINS AND CATCH BASIN MANHOLES.
5. A SILT FENCE TO BE INSTALLED 0.3m INSIDE THE SITE PROPERTY LINE TO LOCATIONS SHOWN ON THIS DRAWING.
6. A VISUAL INSPECTION SHALL BE COMPLETED DAILY ON SEDIMENT CONTROL BARRIERS AND ANY DAMAGE REPAIRED IMMEDIATELY. CARE WILL BE TAKEN TO PREVENT DAMAGE DURING CONSTRUCTION OPERATIONS. IN SOME CASES SOME BARRIERS MAY BE REMOVED TEMPORARILY TO ACCOMMODATE THE CONSTRUCTION OPERATIONS. THE AFFECTED BARRIERS WILL BE REINSTATED AT NIGHT WHEN CONSTRUCTION IS COMPLETED.
7. THE SEDIMENT CONTROL DEVICES WILL BE CLEANED OF ACCUMULATED SILT AS REQUIRED. THE DEPOSITS WILL BE DISPOSED OF AS PER THE REQUIREMENTS OF THE CONTRACT.
8. DURING THE COURSE OF CONSTRUCTION IF THE ENGINEER BELIEVES THAT ADDITIONAL PREVENTION METHODS ARE REQUIRED TO CONTROL EROSION AND SEDIMENTATION, THE CONTRACTOR WILL INSTALL ADDITIONAL SILT FENCES OR OTHER METHODS AS REQUIRED TO THE SATISFACTION OF THE ENGINEER.
9. CONSTRUCTION AND MAINTENANCE REQUIREMENTS FOR EROSION AND SEDIMENT CONTROLS TO COMPLY WITH ONTARIO PROVINCIAL STANDARD SPECIFICATION (O.P.S.S.) GRSS 805, AND CITY OF OTTAWA SPECIFICATIONS.
10. THE CONTRACTOR SHALL PROVIDE SWEEPING ON ADJACENT STREETS TO THE SATISFACTION OF THE MUD AND DEBRIS FROM THE SITE. IT IS TO REVIEW CURRENT EROSION CONTROL PRACTICES.



- NOTES:**
1. STONE - USE CLEAR CRUSHED 100mm STONE.
  2. LENGTH - AS REQUIRED BUT NOT LESS THAN 15.0m.
  3. THICKNESS - NOT LESS THAN 300mm.
  4. WIDTH - 6.7m MINIMUM, NOT LESS THAN THE WIDTH AT POINTS WHERE
  5. FILTER CLOTH - WILL BE PLACED OVER THE ENTIRE AREA PRIOR TO
  6. FACING STONE.
  7. MAINTENANCE - THE ENTRANCE SHALL BE MAINTAINED IN A CONDITION WHICH WILL PREVENT TRACKING OR FLOWING OF SEDIMENT ONTO PUBLIC RIGHT-OF-WAY. THIS MAY REQUIRE PERIODIC TOP DRESSING WITH ADDITIONAL STONE AS CONDITIONS DEMAND AND REPAIR AND/OR CLEAN SPILLED, DRIPPED OR TRACKED ONTO THE PUBLIC RIGHT-OF-WAY MUST BE REMOVED IMMEDIATELY.
  8. PERIODIC INSPECTION AND NEEDED MAINTENANCE SHALL BE PROVIDED AFTER EACH RAIN.

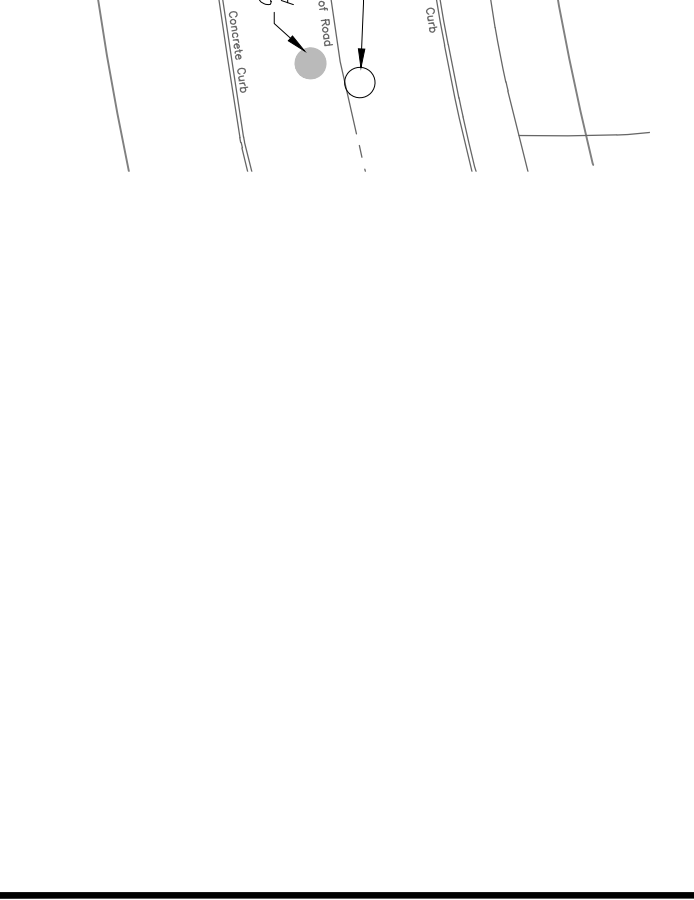
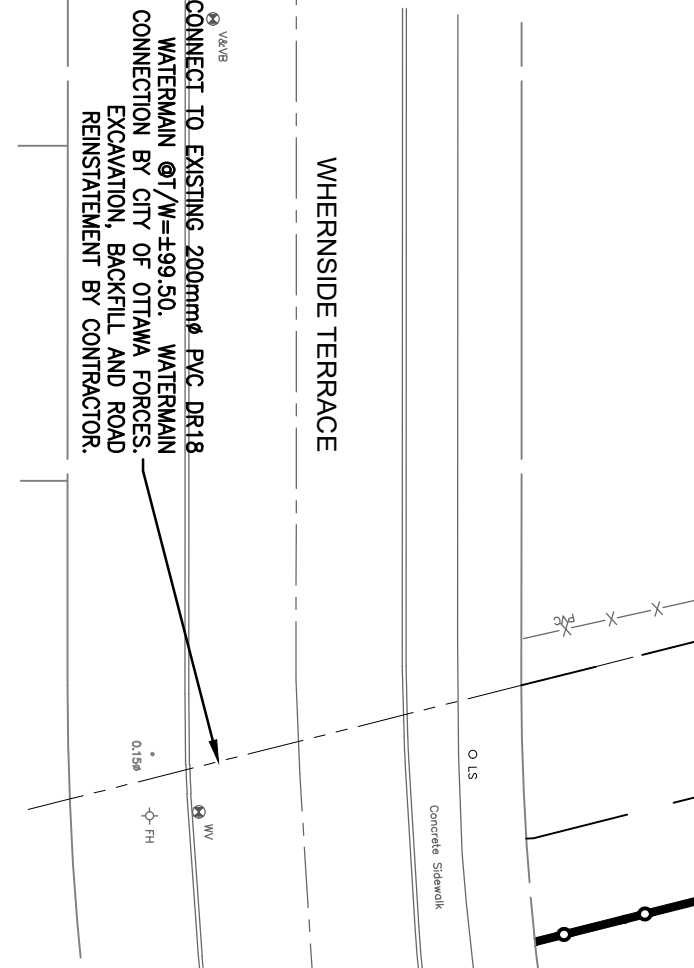
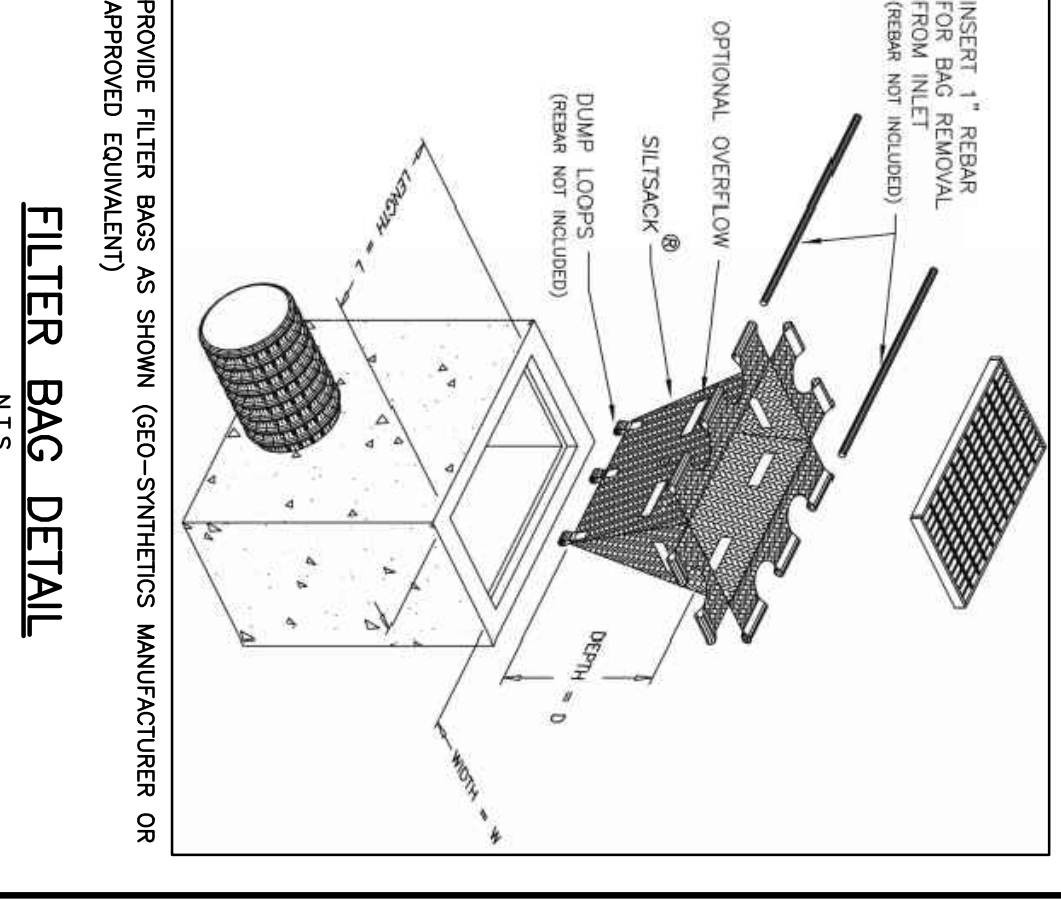
#### MUD MAT DETAIL

#### LIGHT DUTY SILT FENCE BARRIER



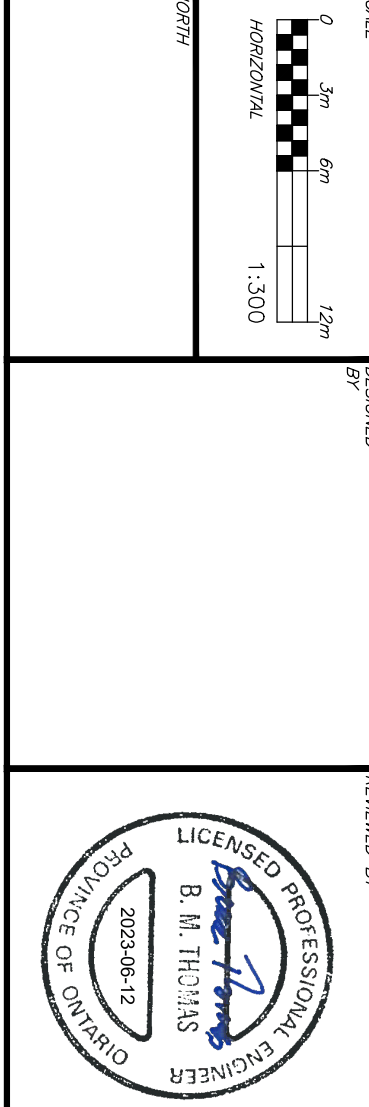
- NOTES:**
1. WOVEN WIRE FENCE TO BE FASTENED SECURELY TO WOOD POSTS
  2. POSTS TO BE SPACED AT 2.5 METRES CENTRE TO CENTRE.
  3. WHEN TWO SECTIONS OF FILTER CLOTH ADJOIN EACH OTHER
  4. THE SEAMS BE OVERLAPPED BY MINIMUM 500mm
  5. REMOVED WHEN 'BULGES' DEVELOP IN THE SILT FENCE.
  6. WOOD POSTS TO BE HARDWOOD TYPE (50mm x 50mm).
  7. GEOTEXTILE TO BE SPREAD TO COVER ENTIRE STANDARD WIDTH.
  8. SILT FENCE MUST BE INSTALLED BEFORE COMMENCEMENT OF CONSTRUCTION AND IN ACCORDANCE WITH DETAIL. SILT FENCE SEDIMENTS MUST BE CLEARED AWAY WHEN THEY REACH HALF THE HEIGHT OF THE FENCE.

#### FILTER BAG DETAIL



**CAUTION:** OF ALL POLE LINES, CONDUITS, WATERMANS, SEWERS AND OTHER UNDERGROUND AND OVERGROUND UTILITIES SHOWN HEREON ARE NOT NECESSARY AND WHERE SHOWN, THE ACCURACY OF THE POSITION OF SUCH UTILITIES AND DEPTHS THEREOF IS NOT GUARANTEED. BEFORE STARTING WORK, DETERMINE THE EXACT LOCATION OF ALL SUCH UTILITIES AND DAMAGE TO THEM.

REV	DESCRIPTION	DATE	BY	APP
1	ISSUED FOR APPROVAL	14/06/23	SAB	BMT
	REVISION DESCRIPTION			



**exp.**  
 ENGINEERING PROFESSIONAL SERVICES  
 B. M. THOMAS  
 2023-06-12  
 LICENSED PROFESSIONAL ENGINEER  
 ONTARIO

**THEBERGE HOMES**  
 1600 WAPERRIE AVENUE, SUITE 205  
 OTTAWA, ON, K1Z 8P5  
 613.421.1515

**SECOND LINE ROAD**  
 1158 OLD SECOND LINE ROAD  
 KANATA, ONTARIO.

PROJECT No. OTT-00245003-A1  
 SHEET No. ESD  
 DATE: JUNE 2023

PROJECT No. CO4