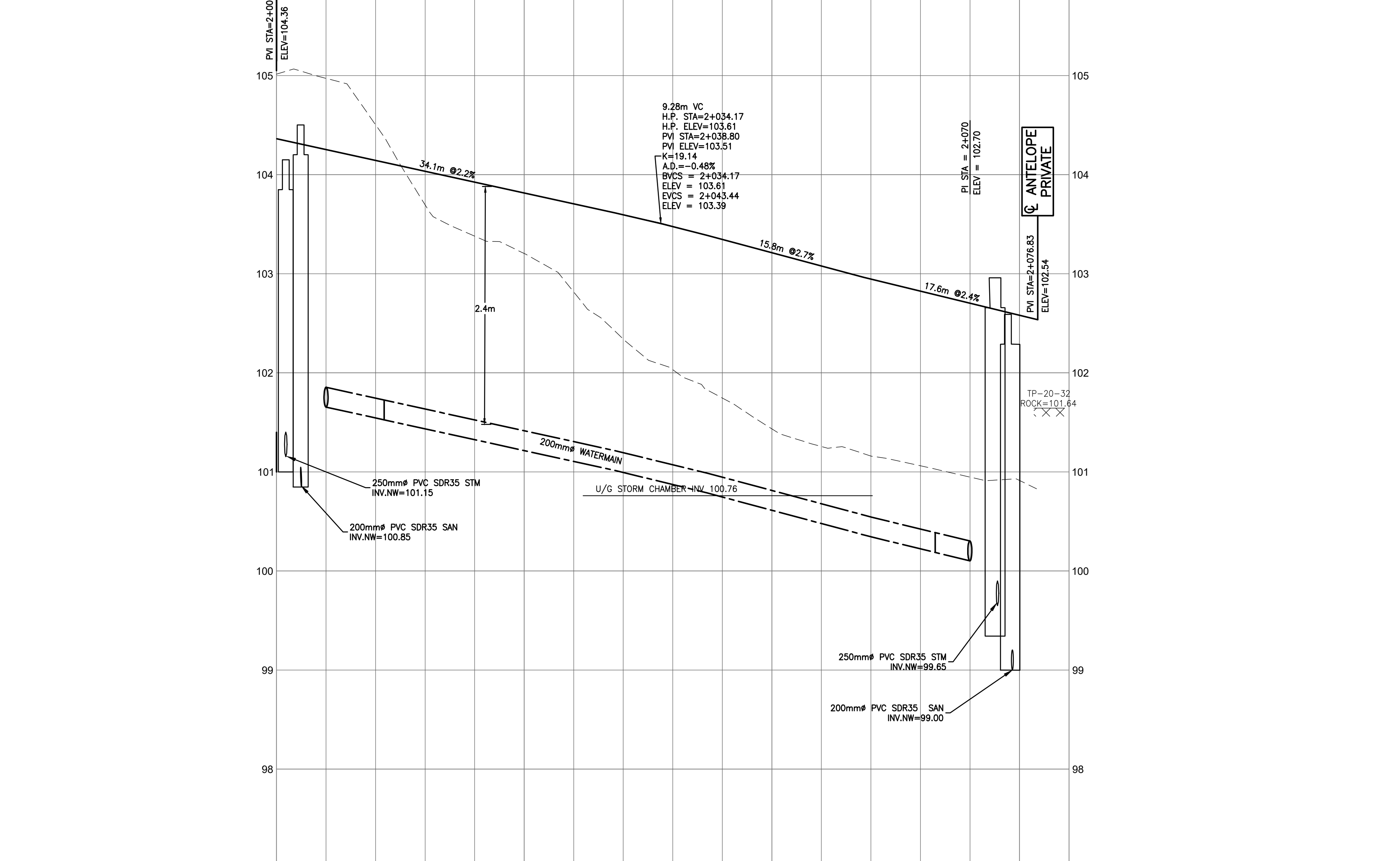
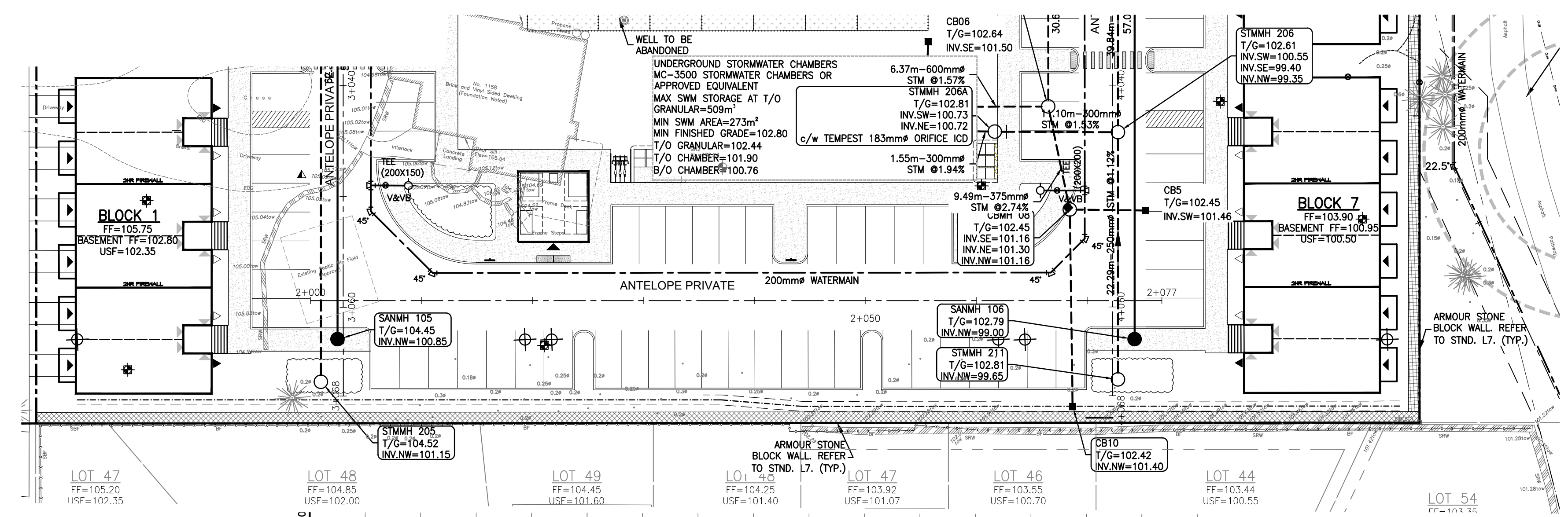


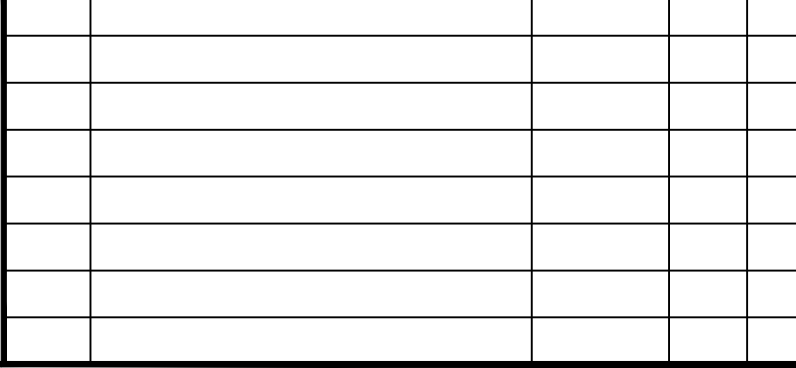
OLD SECOND LINE ROAD



STATION	PROPOSED ELEVATION	EXISTING ELEVATION	TOP OF WATERMAIN ELEVATION	STORM SEWER INVERTS	SANITARY SEWER INVERTS	CHAINAGE
2+000	104.25	104.14	101.86			2+000
2+005.0	104.14	104.03	101.72			2+005.0
2+010.9	104.03	103.93	101.51			2+010.9
2+021.8	103.93	103.82	101.29			2+021.8
2+025	103.82	103.71	101.13			2+025
2+031.5	103.71	103.60	100.89			2+031.5
2+037.9	103.60	103.48	100.72			2+037.9
2+047.6	103.48	103.35	100.54			2+047.6
2+050	103.35	103.21	100.39			2+050
2+053.8	103.21	103.08	100.30			2+053.8
2+060.0	103.08	102.95	100.15			2+060.0
2+066.5	102.95	102.82	100.00			2+066.5
2+070.0	102.82	102.70	99.85			2+070.0
2+075	102.70	102.58	99.70			2+075
2+080	102.58	102.46	99.55			2+080

CAUTION
THE POSITION OF ALL POLE LINES, CONDUITS, WATERMANS, SEWERS AND OTHER UNDERGROUND AND OVERGROUND UTILITIES AND STRUCTURES IS NOT NECESSARILY SHOWN ON THE CONTRACT DRAWINGS, AND WHERE SHOWN, THE ACCURACY OF THE POSITION OF SUCH UTILITIES AND STRUCTURES IS NOT GUARANTEED. BEFORE STARTING WORK, DETERMINE THE EXACT LOCATION OF ALL SUCH UTILITIES AND STRUCTURES AND ASSUME ALL LIABILITY FOR DAMAGE TO THEM.

REV	REVISION DESCRIPTION	DATE	BY	APPD
2	REVISED PER CITY COMMENTS	17/11/23	AAS	BMT
1	ISSUED FOR APPROVAL	14/06/23	SAB	BMT



DESIGNED BY: B. M. THOMAS
 REVIEWED BY: B. M. THOMAS
 DEVELOPER: THEBERGE HOMES
 1600 LAPERRIERE AVENUE, SUITE 205
 OTTAWA, ON. K1Z 8P5
 613.421.1515

exp Services Inc.
 1-813-688-1899 | +1-613-225-7330
 3050 Steeles Avenue East, Unit 100
 Downsview, ON M3B 8K6
 Canada
 www.exp.com
 • BUILDINGS • EARTH & ENVIRONMENT • ENERGY •
 • INDUSTRIAL • INFRASTRUCTURE • SUSTAINABILITY •

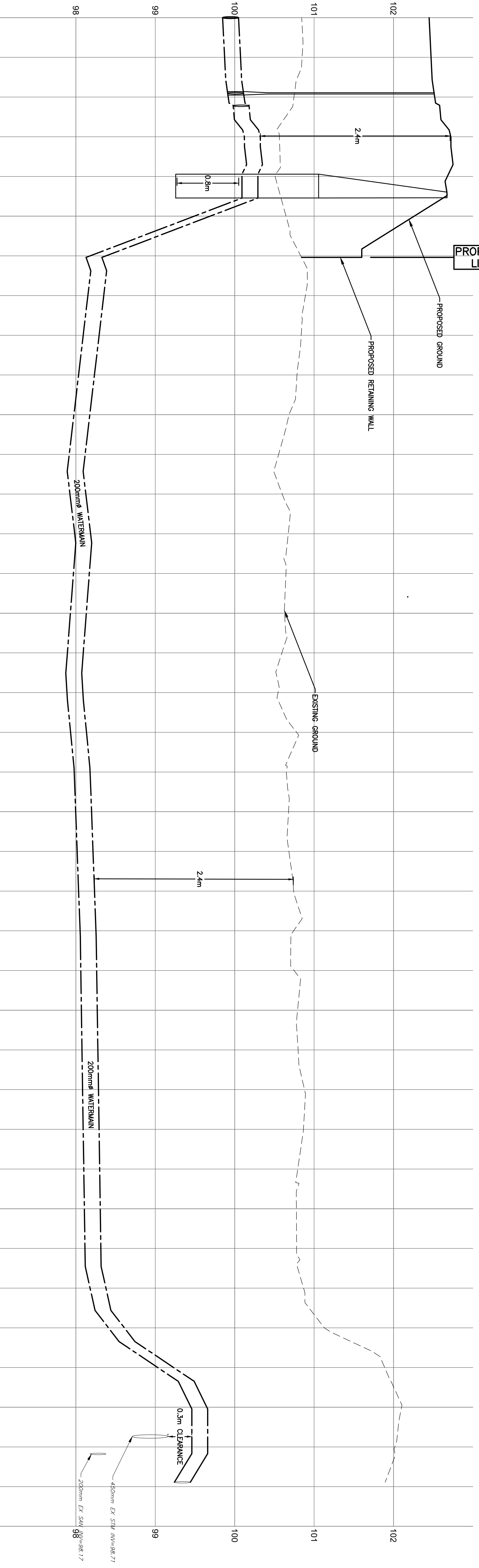
PROJECT No. OTT-00245003-AT
 SURVEY FSD
 DATE JUNE 2023
 DRAWING No. C06

BASEPLAN SAB
 DESIGN AS
 CHECKED
 CAD SAB
 PROJECT MANAGER BMT
 APPROVED

PROJECT SECOND LINE ROAD
 1158 OLD SECOND LINE ROAD
 KANATA, ONTARIO.
 TITLE PROFILE ANTELOPE PRIVATE
 STA. 2+000 TO STA. 2+080

CAUTION: OF ALL POLE LINES, CONDUITS, WATERMANS, SEWERS AND OTHER UNDERGROUND AND OVERGROUND UTILITIES SHOWN ON THIS DRAWING. THE ACCURACY OF THE POSITION OF SUCH UTILITIES AND BEFORE STARTING WORK, DETERMINE THE EXACT LOCATION OF ALL SUCH UTILITIES AND DAMAGE TO THEM.

CHAINAGE	± ELEVATIONS EXISTING	± ELEVATION PROPOSED	TOP OF WATERMAIN ELEVATION
5+060	98.88 98.86 98.85	100.04	100.11 100.09 100.18
	22.5° BEND		200x200 TEL
5+021.0	100.29	100.51	100.29
5+025	100.65	100.65	METER CHAMBER
5+030.2	98.33	100.53	98.33
5+031.8	98.98	100.53	22.5° BEND
5+033.7	98.37	100.69	98.37
	22.5° BEND		
5+050	98.19	100.68	98.19
5+069.4	98.17	100.05	98.17
	22.5° BEND		
5+075	98.14	100.61	98.14
5+095.0	98.18	100.65	98.18
	11.25° BEND		
5+100	98.19	100.66	98.19
5+125	98.27	100.75	98.27
5+150	98.31	100.79	98.31
5+171.5	98.78	101.09	98.78
5+172.8	98.78	101.10	98.78
5+175	98.78	101.10	98.78
5+182.3	99.57	101.20	99.57
5+184.5	98.85	101.20	98.85
5+190	98.85	101.20	98.85
	22.5° BEND		
	± ELEVATION PROPOSED	± ELEVATION EXISTING	TOP OF WATERMAIN ELEVATION
	CHAINAGE		CHAINAGE



PROPERTY LINE

PROPOSED GROUND

PROPOSED REMAINING WALL

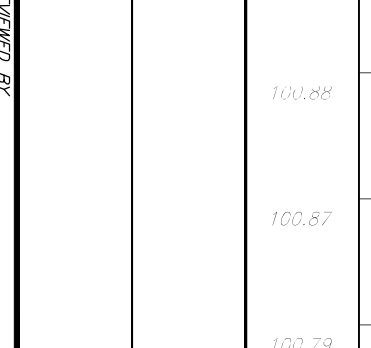
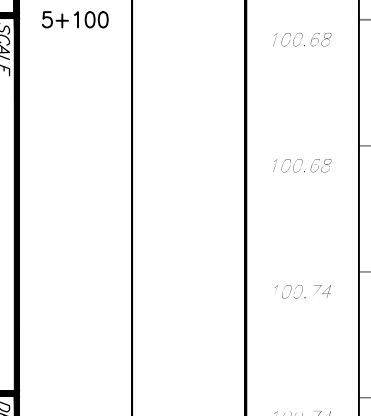
EXISTING GROUND

200mm WATERMAIN

200mm WATERMAIN

200mm WATERMAIN

<p>REVISED PER CITY COMMENTS ISSUED FOR APPROVAL</p> <p>17/11/23 14/06/23</p> <p>AS SAB</p> <p>BMT</p>	<p>17/11/23 14/06/23</p> <p>AS SAB</p> <p>BMT</p>	<p>17/11/23 14/06/23</p> <p>AS SAB</p> <p>BMT</p>	<p>17/11/23 14/06/23</p> <p>AS SAB</p> <p>BMT</p>
<p>1</p> <p>REVISION DESCRIPTION</p> <p>DATE</p> <p>BY</p> <p>APP</p>	<p>2</p> <p>REVISION DESCRIPTION</p> <p>DATE</p> <p>BY</p> <p>APP</p>	<p>1</p> <p>REVISION DESCRIPTION</p> <p>DATE</p> <p>BY</p> <p>APP</p>	<p>2</p> <p>REVISION DESCRIPTION</p> <p>DATE</p> <p>BY</p> <p>APP</p>

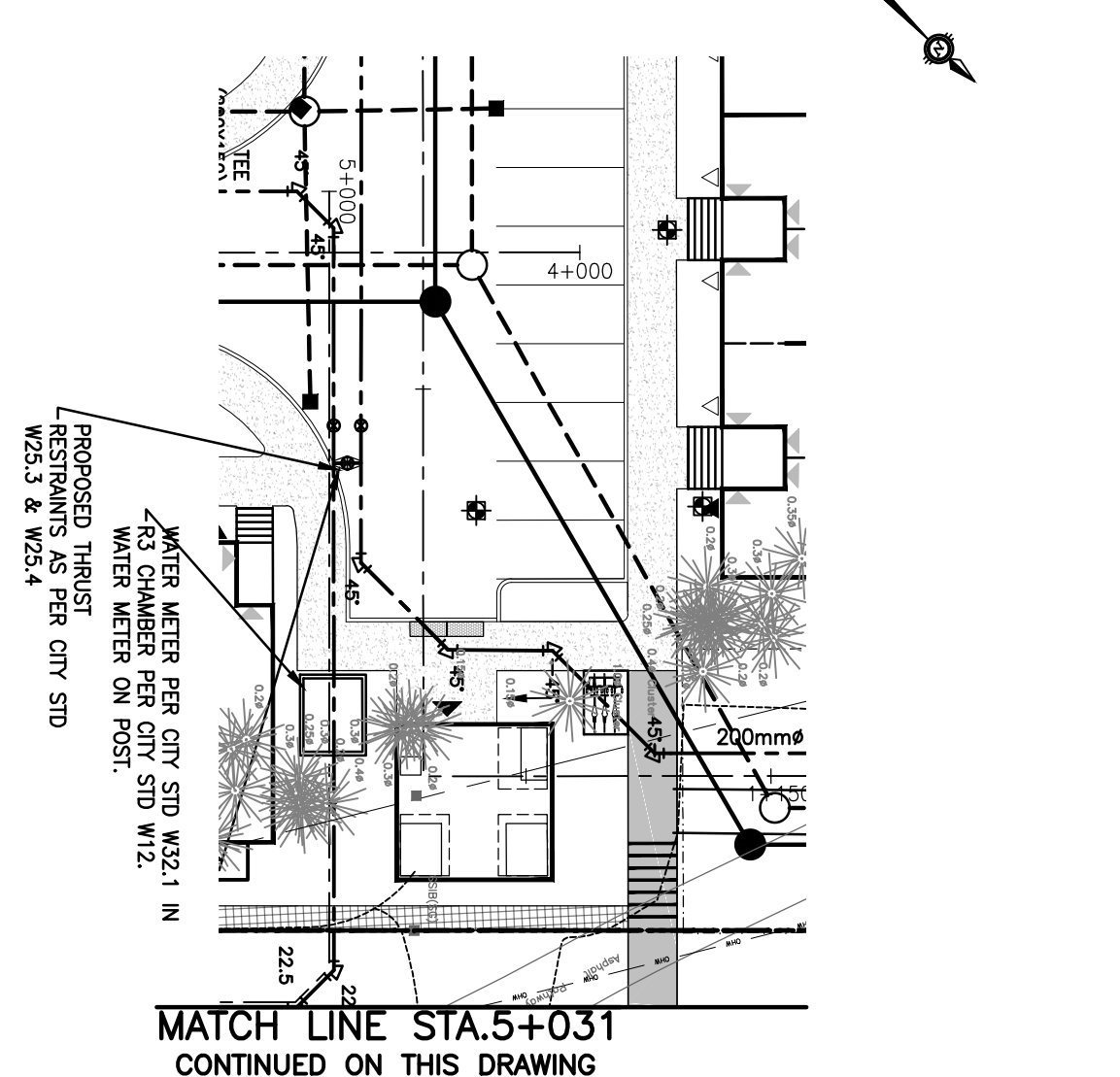


exp.
 EXP SERVICES INC.
 1800 LAPERIERE AVENUE, SUITE 205
 OTTAWA, ON, K1Z 8P5
 613.421.1515

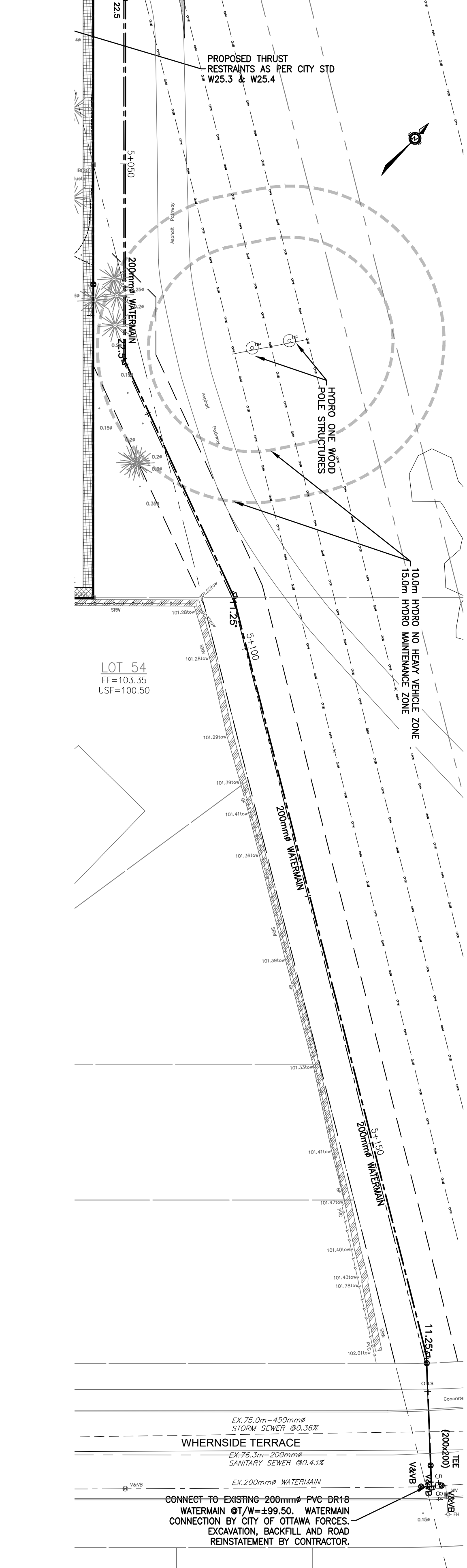
PROJECT NO.
 OTT-00245003-AN
 SHEET NO.
 FSD
 DATE
 JUNE 2023

PROJECT TITLE
 SECOND LINE ROAD
 1158 OLD SECOND LINE ROAD
 KANATA, ONTARIO

PROJECT NO.
 C07-B



MATCH LINE STA. 5+031
 CONTINUED ON THIS DRAWING



WHERSIDE TERRACE
 EX. 75.0m - 450mm#
 STORM SEWER @0.36%

EX. 76.3m - 200mm#
 SANITARY SEWER @0.43%

EX. 200mm# WATERMAIN

CONNECT TO EXISTING 200mm# PVC DR18
 WATERMAIN @T/W=±99.50. WATERMAIN
 CONNECTION BY CITY OF OTTAWA FORCES.
 EXCAVATION, BACKFILL AND ROAD
 REINSTATEMENT BY CONTRACTOR.