

Distance Note
Distances shown on this plan are ground distances and can be converted to grid distances by multiplying by the combined scale factor of 0.99994.

Bearing Note
Bearings are grid, derived from the southerly limit of Withrow Avenue having a bearing of N 58° 32' 15" E as shown on Registered Plan 375 and are referred to the Central Meridian of MTM Zone 9 (76° 30' West Longitude) Nad-83 (Original).

Elevation Notes

- Elevations shown are geodetic and are referred to Geodetic Datum CGVD-1928-1978.
- Elevations derived from Control Monument No.3702, Index No.67 having a published elevation of 96.951m.
- It is the responsibility of the user of this information to verify that the job benchmark has not been altered or disturbed and that its relative elevation and description agrees with the information shown on this drawing.

Utility Notes

- This drawing cannot be accepted as acknowledging all of the utilities and it will be the responsibility of the user to contact the respective utility authorities for confirmation.
- Only visible surface utilities were located.
- Underground utility data derived from City of Ottawa utility sheet reference: L-04-12, L-04-06 and drawings E521 (Sheet 3 of 3), 10151 (Sheet 9 of 36), 10158 (Sheet 8 of 34) & No. 11310.
- Sanitary and storm sewer grades inverts were derived from field measurement. Sanitary and storm sewer inverts were compiled from City of Ottawa.
- A field location of underground plant by the pertinent utility authority is mandatory before any work involving breaking ground, probing, excavating etc.

Notes & Legend

<p>Denotes</p> <ul style="list-style-type: none"> — Survey Monument Planted — Survey Monument Found — Standard Iron Bar — SSIB — SSIB* — IB — IB* — MSM — ST — (Wit) — Meas — Acc N/S — (P1) — (P2) — (P3) — (P4) — (P5) — (P6) — (P7) — (P8) — (P9) — (P10) — (P11) — (MI-ST) — (MI-S) — (MI-B) — (MI-T) 	<ul style="list-style-type: none"> — TV — Undergroud Cable — T — Undergroud Traffic — ST — Undergroud Storm Sewer — S — Undergroud Sanitary Sewer — W — Undergroud Water — P — Undergroud Power — G — Undergroud Gas — B — Undergroud Bell — TW — Undergroud Telecom — OW — Overhead Wires — UP — Utility Pole — AN — Anchor — LS — Light Standard — CB — Catch Basin — WF — Water Valve — CSP — Corrugated Steel Pipe — FH — Fire Hydrant — WS — Water Stand Post — GM — Gas Meter — HM — Hydro Meter — +65.00 — Location of Wall/Curb Elevations — +65.00 — Top of Concrete Curb Elevation — — Property Line — Deciduous Tree — Coniferous Tree 	<ul style="list-style-type: none"> — TB-B — Bell Terminal Box — TB-C — Cable Terminal Box — TB-T — Traffic Terminal Box — TP — Traffic Signal Post — B — Bollard — AS — Sign — G — Gate — WP — Wood Pole — MP — Metal Pole — WP (0.188) — Wood Pillar (0.188) — AC — Air Conditioner — D — Diameter — B — Borehole — BF — Chain Link Fence — BF — Board Fence — WF — Wire Fence — WW — Window Well — CRW — Concrete Retaining Wall — SRW — Stone Retaining Wall — TRW — Timber Retaining Wall — IRW — Interlock Retaining Wall — T/P — Top of Grate — T/P — Top of Pipe — U/Eave — Underside of Eave — Fdn — Foundation — CL — Centreline — DI — Ditch Inlet — WP — Wood Pillar
---	--	---

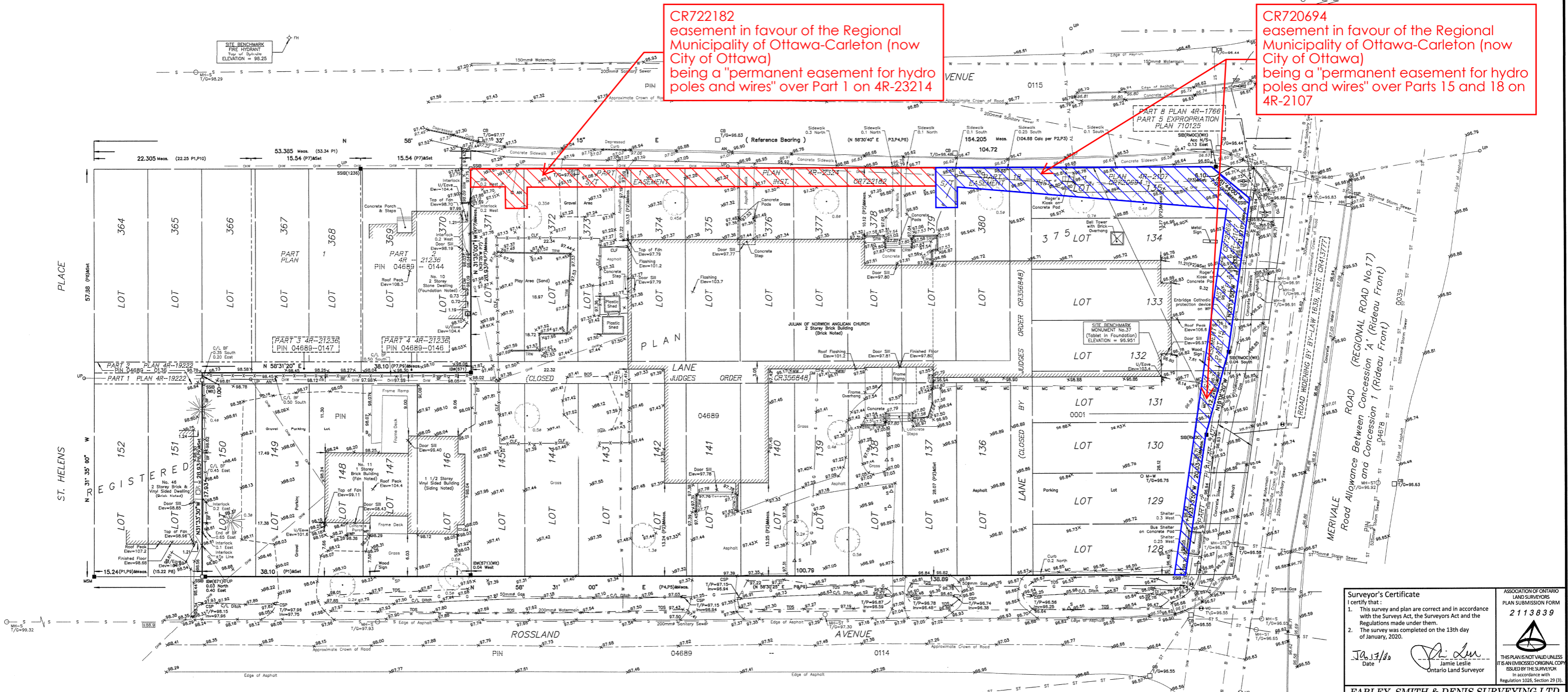
TOPOGRAPHIC PLAN OF SURVEY OF
**LOTS 136 TO 150 (BOTH INCLUSIVE),
LOTS 371 TO 380 (BOTH INCLUSIVE),
PART OF LOTS 128 TO 135
(BOTH INCLUSIVE) AND
PART OF THE LANE
(Closed by Judge's Order CR356848)
REGISTERED PLAN 375
CITY OF OTTAWA**
FARLEY, SMITH & DENIS SURVEYING LTD. 2020

Scale 1: 250
Metric Note
Distances on this plan are in metres and can be converted to feet by dividing by 0.3048.



CR722182
easement in favour of the Regional Municipality of Ottawa-Carleton (now City of Ottawa) being a "permanent easement for hydro poles and wires" over Part 1 on 4R-23214

CR720694
easement in favour of the Regional Municipality of Ottawa-Carleton (now City of Ottawa) being a "permanent easement for hydro poles and wires" over Parts 15 and 18 on 4R-2107



TOPOGRAPHIC DATA WAS COLLECTED UNDER WINTER CONDITIONS. SNOW COVER AND ICE PRECLUDE DETERMINING LOCATION AND ELEVATION OF SOME TOPOGRAPHICAL DATA THAT IS OTHERWISE VISIBLE.

WARNING: NO PERSON MAY COPY, REPRODUCE, DISTRIBUTE OR ALTER THIS PLAN IN WHOLE OR IN PART WITHOUT THE WRITTEN PERMISSION OF FARLEY, SMITH & DENIS SURVEYING LTD.

Surveyor's Certificate
I certify that:
1. This survey and plan are correct and in accordance with the Survey Act, the Surveyors Act and the Regulations made under them.
2. The survey was completed on the 13th day of January, 2020.

Date: Jan 13/20
Signature: Jamie Leslie
Ontario Land Surveyor

ASSOCIATION OF ONTARIO LAND SURVEYORS
PLAN SUBMISSION FORM
2113839

THIS PLAN IS NOT VALID UNLESS IT IS AN EMBOSSED ORIGINAL COPY ISSUED BY THE SURVEYOR IN ACCORDANCE WITH REGULATION 1026, SECTION 29 (3).

FARLEY, SMITH & DENIS SURVEYING LTD.
ONTARIO LAND SURVEYORS
CANADA LAND SURVEYORS
190 COLONNADE ROAD, OTTAWA, ONTARIO K2E 7J5
TEL. (613) 727-8226 FAX. (613) 727-1826