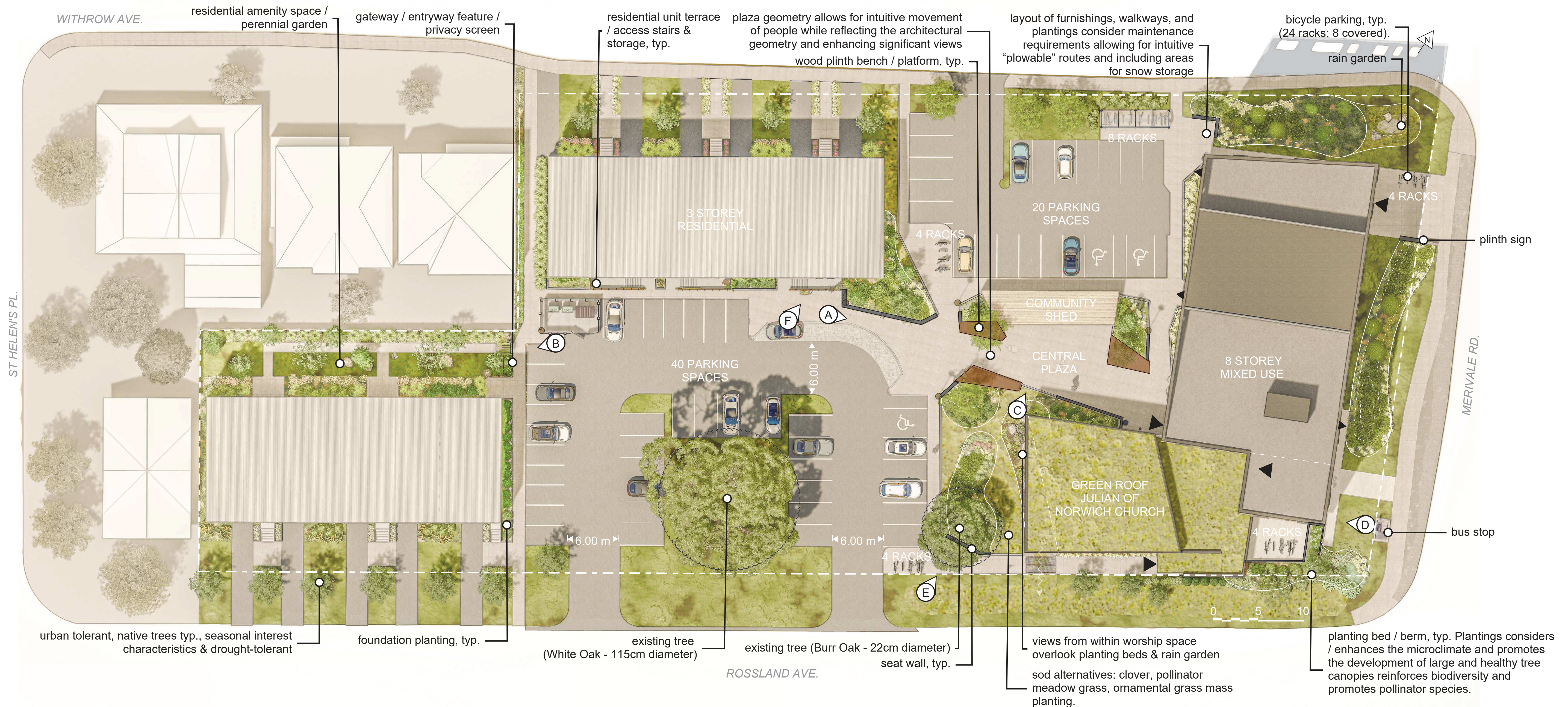




SITE PLAN



COHESION
 Placement of site furnishings and courtyard spaces allows for intuitive movement through the site while creating a sense of arrival and inviting users / visitors to wander and engage with the spaces. Colour and natural materials like wood and stone are used throughout to create a sense of warmth and welcome.



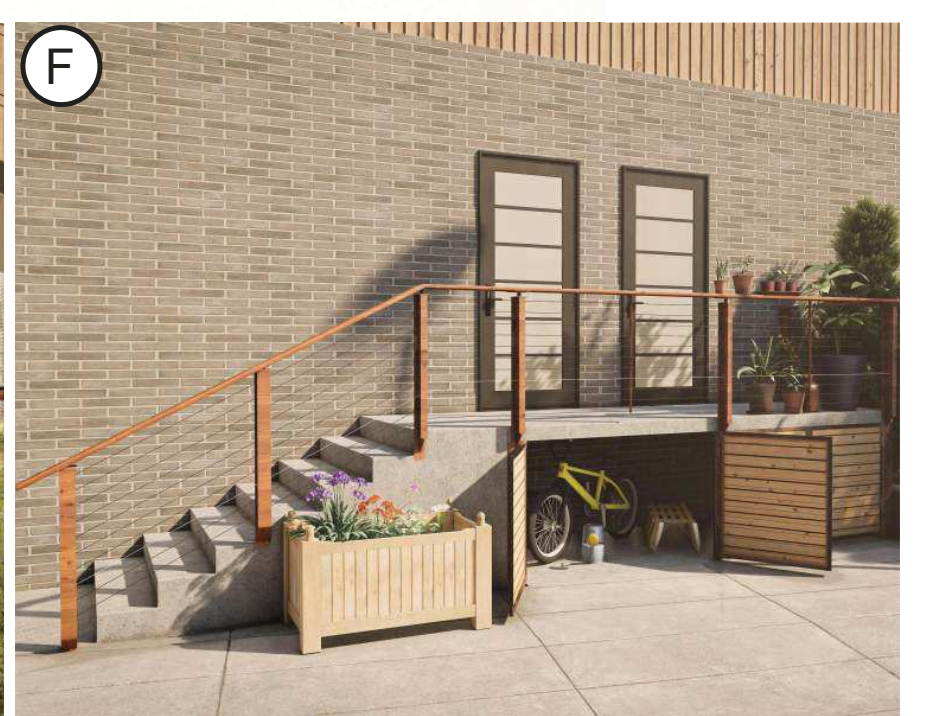
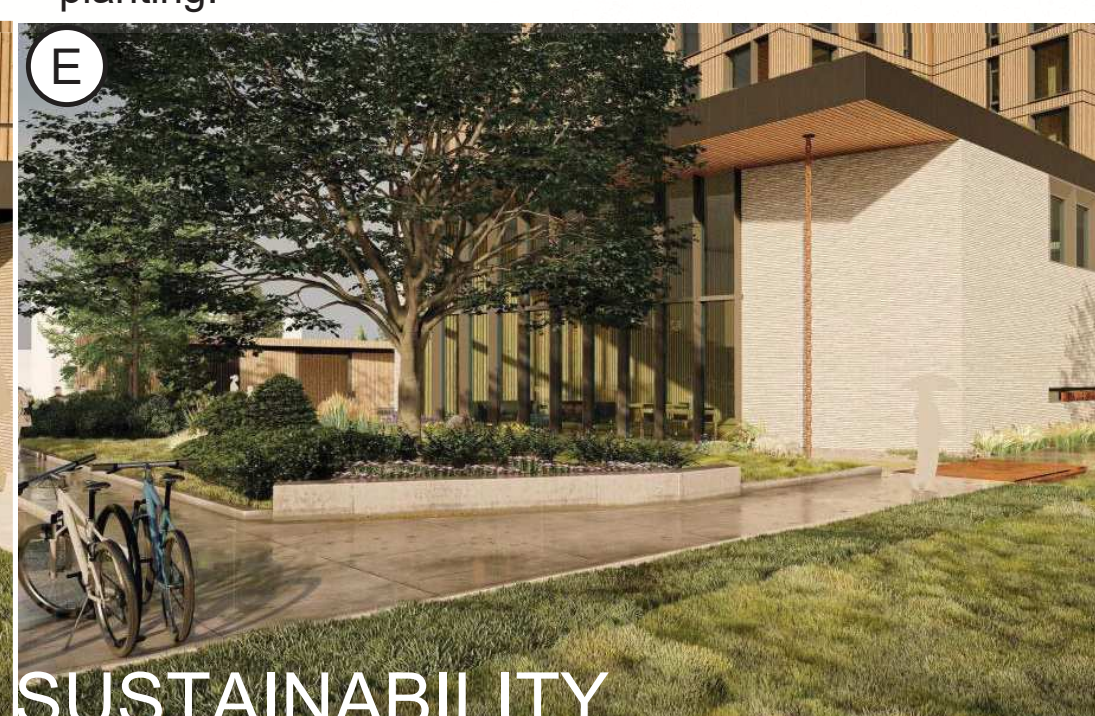
INCLUSIVITY
 Accessible for users of all ages and abilities. Unobstructed views from internal and external streets, walkways, and buildings, are maintained.



COMMUNITY
 Outdoor spaces adaptable for all seasons and weather conditions. Horizontal scale vs. vertical scale considered to create welcoming, comfortable, and intimate outdoor spaces for people.



SUSTAINABILITY
 Integrated green infrastructure which integrates Low Impact Development into public amenity space: rain gardens, vegetated swales, soil cells, permeable paving, green roof, extended tree pits (maximize soil volume). Pollinator meadows, urban tolerant native trees



PROPOSED REDEVELOPMENT



AERIAL SITE PLAN



ANGLICAN
DIOCESE of
OTTAWA



JULIAN OF
NORWICH
ANGLICAN CHURCH



MULTIFAITH
Housing Initiative

THE ANCHOR
May 2023



Stantec



architects
collective



VIEW FROM INTERSECTION OF MERIVALE RD. AND ROSSLAND AVE.



ANGLICAN
DIOCESE of
OTTAWA



JULIAN OF
NORWICH
ANGLICAN CHURCH



MULTIFAITH
Housing Initiative

THE ANCHOR
May 2023



Stantec

figur

architects
collective



VIEW FROM ROSSLAND AVE. LOOKING NORTH



ANGLICAN
DIOCESE of
OTTAWA



JULIAN OF
NORWICH
ANGLICAN CHURCH



MULTIFAITH
Housing Initiative

THE ANCHOR
May 2023



Stantec



architects
collective



VIEW FROM MERIVALE RD. LOOKING EAST



ANGLICAN
DIOCESE of
OTTAWA



JULIAN OF
NORWICH
ANGLICAN CHURCH



MULTIFAITH
Housing Initiative

THE ANCHOR
May 2023



Stantec



architects
collective



VIEW INSIDE CHURCH LOOKING WEST



ANGLICAN
DIOCESE of
OTTAWA



JULIAN OF
NORWICH
ANGLICAN CHURCH



MULTIFAITH
Housing Initiative

THE ANCHOR
May 2023



Stantec

figuri

architects
collective



JULIAN OF NORWICH CHURCH



VIEW FROM INTERSECTION OF MERIVALE RD. AND WITHROW AVE.



AERIAL VIEW AT ROSSLAND/MERIVALE INTERSECTION



VIEW LOOKING EAST FROM WITHROW AVE.