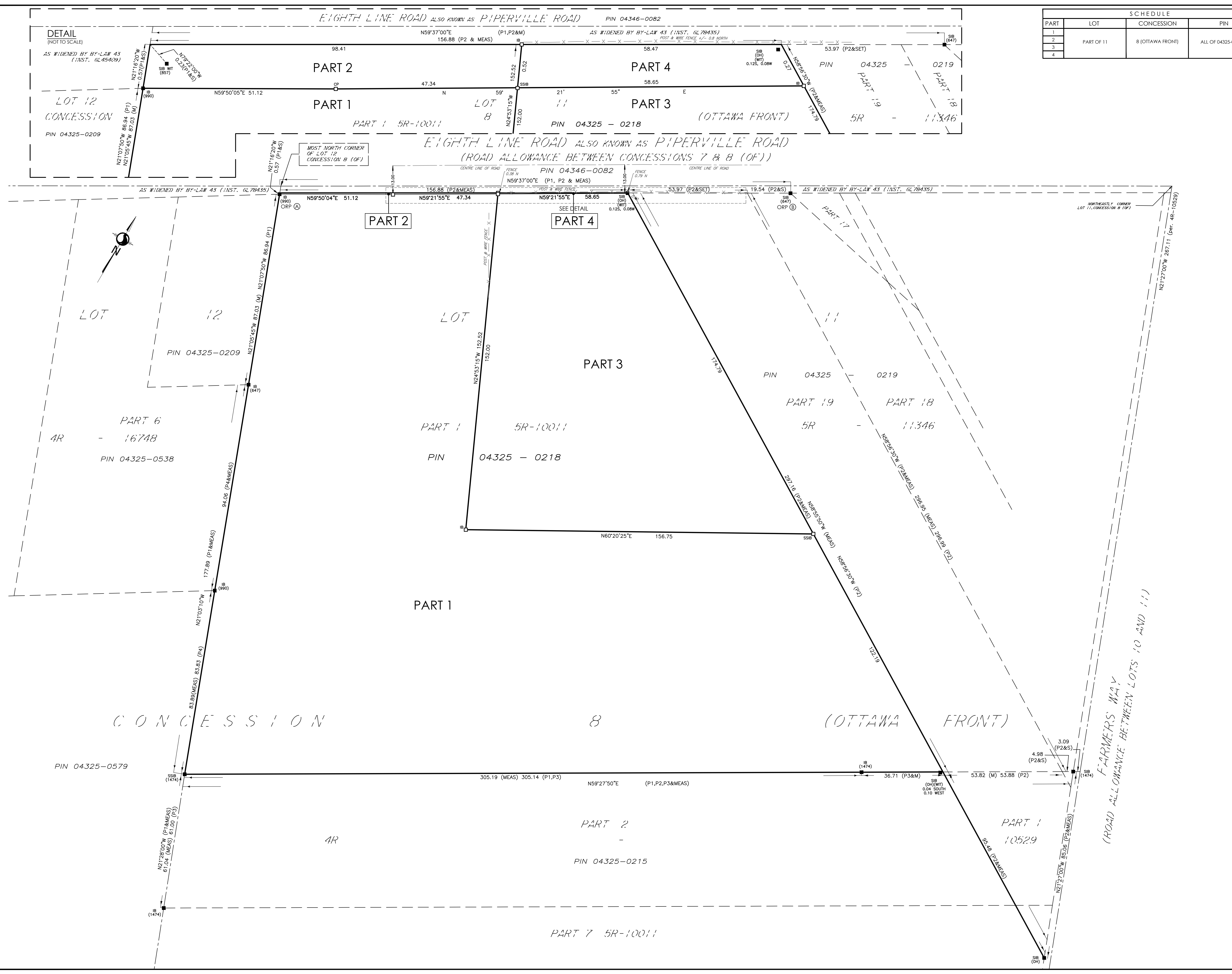


July 11, 2023



SCHEDULE				
PART	LOT	CONCESSION	PIN	AREA (m2)
1				4870.7
2	PART OF 11	8 (OTTAWA FRONT)	ALL OF 04325-0218	61.5
3				16385.2
4				21.4

**PLAN 4R-35559**  
 Received and deposited  
 July 12<sup>th</sup>, 2023  
 Stacey Krivan  
 Representative for the  
 Land Registrar for the  
 Land Titles Division of  
 Ottawa-carleton (No.4)

PLAN OF SURVEY OF  
**PART OF LOT 11  
 CONCESSION 8 (OTTAWA FRONT)**  
 (GEOGRAPHIC TOWNSHIP OF GLOUCESTER)  
 CITY OF OTTAWA

Scale 1:750  
  
 THE INTENDED PLOT SIZE OF THIS PLAN IS 914 mm IN WIDTH BY 610 mm IN HEIGHT  
 WHEN PLOTTED AT A SCALE OF 1:750.

**METRIC CONVERSION**  
 DISTANCES AND COORDINATES SHOWN ON THIS PLAN ARE IN METRES  
 AND CAN BE CONVERTED TO FEET BY DIVIDING BY 0.3048

**GRID SCALE CONVERSION**  
 DISTANCES ARE GRID AND CAN BE CONVERTED TO GRID BY MULTIPLYING BY THE  
 COMBINED SCALE FACTOR OF 0.999975.

**BEARING NOTE**  
 BEARINGS ARE GRID, DERIVED FROM THE CAN-NET VRS NETWORK OBSERVATIONS  
 ON NCC HORIZONTAL CONTROL MONUMENTS 19773035 AND 19680191, CENTRAL  
 MERIDIAN, 76°30' WEST LONGITUDE MTM ZONE 9, NAD83 (ORIGINAL).  
 19773035 N:5004060.42 E:324888.04  
 19680191 N:5033564.26 E:388064.94

**ROTATION NOTE**  
 FOR COMPARISON PURPOSES, A ROTATION OF 0°40'18" COUNTER CLOCKWISE WAS  
 APPLIED TO BEARINGS SHOWN ON P1 & P3 AND 1°04'38" TO BEARINGS SHOWN ON P2.

**LEGEND**

DENOTES	FOUND MONUMENTS
IB	IRON BAR
IBØ	ROUND IRON BAR
SIB	STANDARD IRON BAR
SSIB	SHORT STANDARD IRON BAR
CC	CUT CROSS
CP	CONCRETE PIN
WIT	WITNESS
PIN	PROPERTY IDENTIFICATION NUMBER
M/MEAS	MEASURED
S	SET
OU	ORIGIN UNKNOWN
SG	STANTEC GEOMATICS LTD.
P1	PLAN SR-10011
P2	PLAN SR-11346
P3	PLAN 4R-10529
P4	PLAN 4R-16748
ORP	OBSERVED REFERENCE POINT

OBSERVED REFERENCE POINTS DERIVED FROM THE CAN-NET VRS NETWORK GPS  
 OBSERVATIONS ON NCC HORIZONTAL CONTROL MONUMENTS 19773035 AND 19680191,  
 CENTRAL MERIDIAN, 76°30' WEST LONGITUDE MTM ZONE 9, NAD83 (ORIGINAL).  
 COORDINATES TO URBAN ACCURACY PER SEC 14(2) OF O.REG. 216/10

POINT ID	NORTHING	EASTING
①	5023778.87	382702.00
②	5023895.77	382900.60

COORDINATES CANNOT, IN THEMSELVES, BE USED TO RE-ESTABLISH CORNERS  
 OR BOUNDARIES SHOWN ON THIS PLAN.

**SURVEYOR'S CERTIFICATE**  
 I CERTIFY THAT:  
 1. THIS SURVEY AND PLAN ARE CORRECT AND IN ACCORDANCE WITH THE SURVEYS  
 ACT, THE SURVEYORS ACT AND THE LAND TITLES ACT AND THE REGULATIONS MADE  
 UNDER THEM.  
 2. THE SURVEY WAS COMPLETED ON THE 29th DAY OF JUNE, 2023.

July 11, 2023  
 DATE

FRANCIS LAU  
 ONTARIO LAND SURVEYOR

THIS PLAN OF SURVEY RELATES TO AOLS PLAN SUBMISSION FORM NUMBER V-50243.

**Stantec Geomatics Ltd.**  
 CANADA LANDS SURVEYORS  
 ONTARIO LAND SURVEYORS  
 133 CLYDE AVENUE, SUITE 300  
 OTTAWA, ONTARIO K2C 3G4  
 TEL: 613.722.4420  
 stantec.com

DRAWN: ME CHECKED: CK PM: FL FIELD: CA/ZL PROJECT NO.: 16164630-114