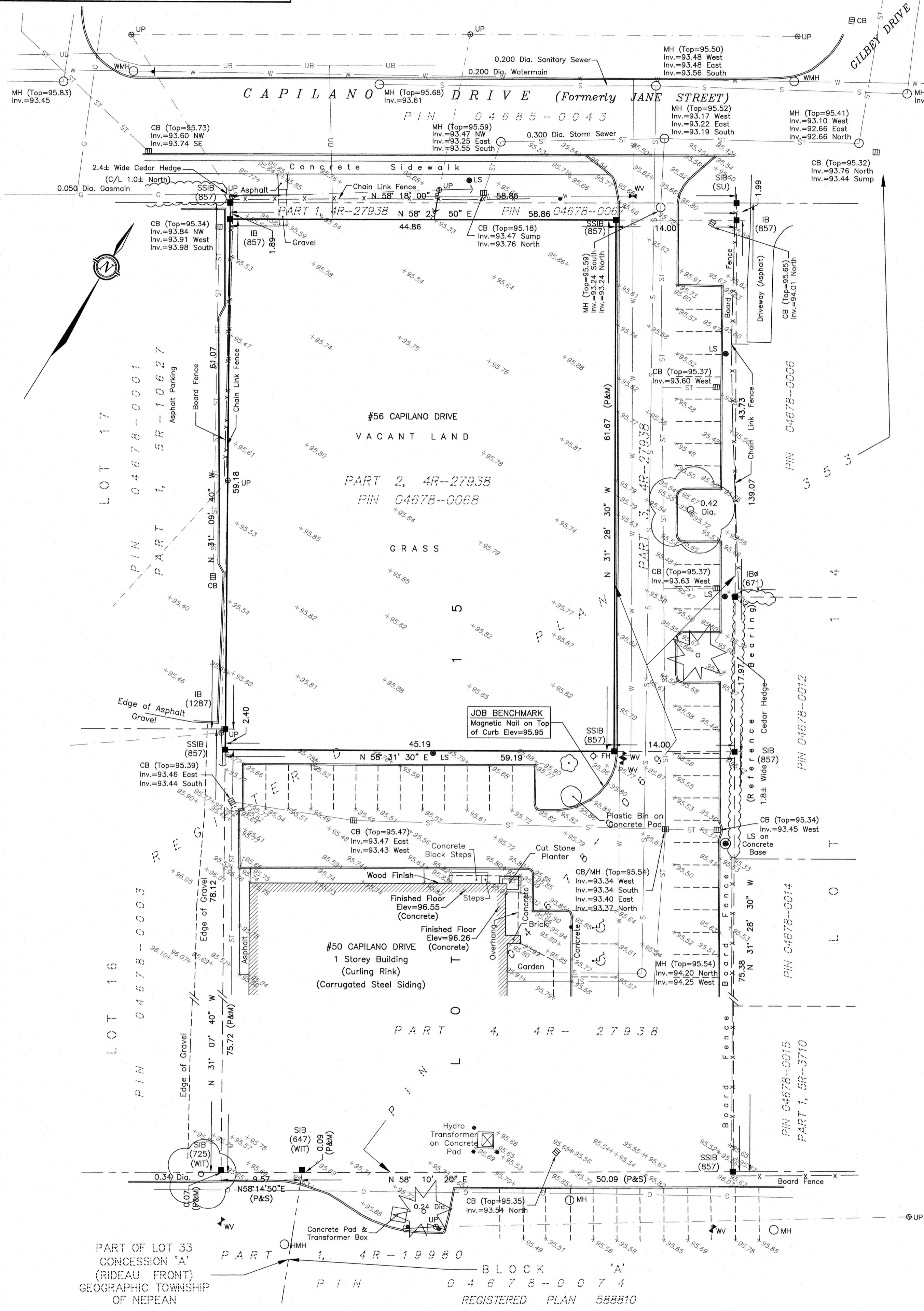


**METRIC**  
 DISTANCES AND ELEVATIONS SHOWN ON THIS PLAN ARE IN METRES  
 AND CAN BE CONVERTED TO FEET BY DIVIDING BY 0.3048



**TOPOGRAPHIC SURVEY OF  
 PART OF LOT 15  
 REGISTERED PLAN 353  
 CITY OF OTTAWA**

SCALE 1 : 300  
 0 5 10 20 30 metres

**FAIRHALL, MOFFATT & WOODLAND LIMITED**  
 ONTARIO LAND SURVEYORS

**ELEVATION NOTES**

- ELEVATIONS SHOWN HEREON ARE REFERRED TO GEODETIC DATUM.
- ELEVATIONS FOR MANHOLE COVERS AND CATCH BASINS HAVE TO BE INDEPENDENTLY CONFIRMED BEFORE THEY CAN BE ACCEPTED FOR FINAL DESIGN OR CONSTRUCTION PURPOSES.
- IT IS THE RESPONSIBILITY OF THE USER OF THIS INFORMATION TO VERIFY THAT THE JOB BENCHMARK HAS NOT BEEN ALTERED OR DISTURBED AND THAT ITS RELATIVE ELEVATION AND DESCRIPTION AGREE WITH THE INFORMATION SHOWN ON THIS DRAWING.

**UTILITY NOTES**

- THIS DRAWING CANNOT BE ACCEPTED AS ACKNOWLEDGING ALL OF THE UNDERGROUND UTILITIES AND IT WILL BE THE RESPONSIBILITY OF THE USER TO CONTACT THE RESPECTIVE UTILITY AUTHORITIES FOR CONFIRMATION OR LOCATION.
- UNDERGROUND UTILITIES, AS REPORTED ON THIS DRAWING, ARE NOT BASED ON AN ACTUAL 'FIELD LOCATE' BY THE RESPECTIVE UTILITY AGENCIES BUT HAVE BEEN COMPILED FROM DATA OBTAINED FROM THE FOLLOWING SOURCE:
  - CITY OF OTTAWA PUBLIC UTILITIES REGISTRY
  - TOPOGRAPHIC PLAN OF SURVEY BY FAIRHALL, MOFFATT & WOODLAND LIMITED, O.L.S. DATED MAY 18, 2012 (REF. 1 (a) - 353 NP).
  - SITE SERVICING PLAN BY D. B. GRAY ENGINEERING INC. (REV.7 DEC 17-14).
- BEFORE ANY WORK INVOLVING PROBING, EXCAVATING, ETC., A FIELD LOCATION OF UNDERGROUND PLANT BY THE PERTINENT UTILITY AUTHORITY IS MANDATORY.

**NOTES**

- BEARINGS HEREON ARE ASTRONOMIC AND ARE REFERRED TO THE EASTERLY LIMIT OF PARTS 3 & 4 AS SHOWN ON PLAN 4R-27938, HAVING A BEARING OF N 31° 28' 30" W.
- THIS PLAN IS AN UPDATE OF A PLAN OF SURVEY BY FAIRHALL, MOFFATT & WOODLAND DATED JULY 21, 2016. (REF. 1(c)-353 NP).

**LEGEND**

■ - SURVEY MONUMENT FOUND	(SU) - SOURCE UNKNOWN
SIB - STANDARD IRON BAR	(WIT) - WITNESS
SSIB - SHORT STANDARD IRON BAR	DIA. - DIAMETER
IB - IRON BAR	INV. - INVERT
⊙ - ROUND	NW - NORTHWEST
CP - CONCRETE PIN	NE - NORTHEAST
(P) - PLAN 4R-27938	
(M) - MEASURED	
(S) - SET	
PIN - PROPERTY IDENTIFIER NUMBER	
(671) - F. H. GOOCH, O.L.S.	
(725) - R. W. ARNETT, O.L.S.	
(857) - FAIRHALL, MOFFATT & WOODLAND LIMITED, O.L.S. (REF. 1-353 NP)	
(1287) - FARLEY, SMITH & MURRAY SURVEYING LTD., O.L.S.	
(MTO) - MINISTRY OF TRANSPORTATION OF ONTARIO	
□ CB - CATCH BASIN	☼ - CONIFEROUS TREE
○ MH - MANHOLE	☺ - DECIDUOUS TREE
○ WMH - WATER MANHOLE	⊕ - HANDICAP
○ HMH - HYDRO MANHOLE	-W- - WATERMAIN
● LS - LAMP STANDARD	- - - OVERHEAD UTILITY WIRES
⊙ UP - UTILITY POLE	-UH- - UNDERGROUND HYDRO
⊕ WV - WATER VALVE	-UB- - UNDERGROUND BELL
⊕ - GUY WIRE AND ANCHOR	-G- - GASMAIN
● - BOLLARD	-ST- - STORM SEWER
▲ - SIGN	-S- - SANITARY SEWER
	== - CURB

**SURVEYOR'S CERTIFICATE**

I CERTIFY THAT:  
 1. THIS SURVEY AND PLAN ARE CORRECT AND IN ACCORDANCE WITH THE SURVEYS ACT, THE SURVEYORS ACT, THE LAND TITLES ACT AND THE REGULATIONS MADE UNDER THEM.

2. THE SURVEY WAS COMPLETED ON JULY 11, 2023.

2023/07/27  
 DATE

JOHN H. GUTRI  
 ONTARIO LAND SURVEYOR

ASSOCIATION OF ONTARIO  
 LAND SURVEYORS  
 PLAN SUBMISSION FORM  
 V-55379

THIS PLAN IS NOT VALID  
 UNLESS IT IS AN EMBOSSED  
 ORIGINAL COPY  
 ISSUED BY THE SURVEYOR  
 in accordance with  
 Regulation 1028, Section 29 (3).

**Fairhall  
 Moffatt &  
 Woodland**  
 LIMITED  
 ONTARIO LAND SURVEYORS  
 OTTAWA  
 Surveying and Land Information Services  
 100-600 TERRY FOX DRIVE, KANATA, ONTARIO K2L 4B6  
 TEL: (613) 591-2580 FAX: (613) 591-1495  
 www.fmw.on.ca

JOB No.  
 AD22500  
 E 364815, N 5024269  
 REFERENCE No.  
 1 (d) - 353 NP  
 S:\JOBS\ad22500\DWGS  
 ad225-tp.DWG (RR)

© COPYRIGHT 2023. REPRODUCTION, ALTERATION OR DISTRIBUTION OF THIS PLAN WITHOUT THE WRITTEN CONSENT OF FAIRHALL, MOFFATT & WOODLAND LIMITED IS PROHIBITED.