

METRIC
DISTANCES AND COORDINATES SHOWN ON THIS PLAN ARE IN METRES
AND CAN BE CONVERTED TO FEET BY DIVIDING BY 0.3048

SCHEDULE				
PART	LOT	REG'D PLAN	PIN	AREA (m ²)
1				640
2				1818
3	PART OF LOT 15	353	ALL OF 04678-0068	97
4				176
5				42

I REQUIRE THIS PLAN TO BE DEPOSITED UNDER THE LAND TITLES ACT.

DATE -----

REPRESENTATIVE FOR LAND REGISTRAR FOR THE LAND TITLES DIVISION OF OTTAWA - CARLETON (N° 4)

JOHN H. GUTRI, O.L.S.

PLAN 4R-
RECEIVED AND DEPOSITED

DATE -----

REPRESENTATIVE FOR LAND REGISTRAR FOR THE LAND TITLES DIVISION OF OTTAWA - CARLETON (N° 4)

JOHN H. GUTRI, O.L.S.

PLAN OF SURVEY OF
PART OF LOT 15
REGISTERED PLAN 353
CITY OF OTTAWA

SCALE 1 : 250
0 5 10 20 25 metres
FAIRHALL, MOFFATT & WOODLAND LIMITED
ONTARIO LAND SURVEYORS

COORDINATES WERE DERIVED FROM REAL TIME NETWORK OBSERVATIONS (SMARTNET) MTM ZONE 9, NAD83 ORIGINAL.
COORDINATES HAVE BEEN DETERMINED TO AN URBAN ACCURACY IN ACCORDANCE WITH SECTION 14(2) OF O.REG 216/10.

POINT ID	NORTHING	EASTING
125	5024306.423	364754.749
121	5024337.810	364804.528
142	5024283.798	364838.286

COORDINATES CANNOT IN THEMSELVES BE USED TO RE-ESTABLISH CORNERS OR BOUNDARIES SHOWN ON THIS PLAN.

NOTES

- BEARINGS ARE ASTRONOMIC AND ARE REFERRED TO THE EASTERLY LIMIT OF LOT 15, REGISTERED PLAN N° 353, AS SHOWN ON PLAN 5R-3710 (P-6062-28). HAVING A BEARING OF N 31° 28' 30" E.
- BEARINGS SHOWN CAN BE CONVERTED TO GRID BY APPLYING A COUNTERCLOCKWISE ANGULAR ROTATION OF 00°31'50".
- DISTANCES ARE GROUND AND CAN BE CONVERTED TO GRID BY MULTIPLYING BY THE COMBINED SCALE FACTOR 0.999934.

LEGEND

- - SURVEY MONUMENT SET (SU) - SOURCE UNKNOWN
- - SURVEY MONUMENT FOUND (WIT) - WITNESS
- SIB - STANDARD IRON BAR PIN - PROPERTY IDENTIFIER NUMBER
- SSIB - SHORT STANDARD IRON BAR UP - UTILITY POLE
- IB - IRON BAR () - ANCHOR & GUY WIRE
- CP - CONCRETE PIN () - OVERHEAD UTILITY WIRES
- Ø - ROUND () - POINT IDENTIFICATION NUMBER
- (P) - REGISTERED PLAN 353 = - CURB
- (S) - SET
- (M) - MEASURED
- (671) - F. H. GOOCH, O.L.S.
- (725) - R. W. ARNETT, O.L.S.
- (857) - FAIRHALL, MOFFATT & WOODLAND LIMITED, O.L.S. (REF. 1-353 NP)
- (1287) - FARLEY, SMITH & MURRAY SURVEYING LTD., O.L.S.

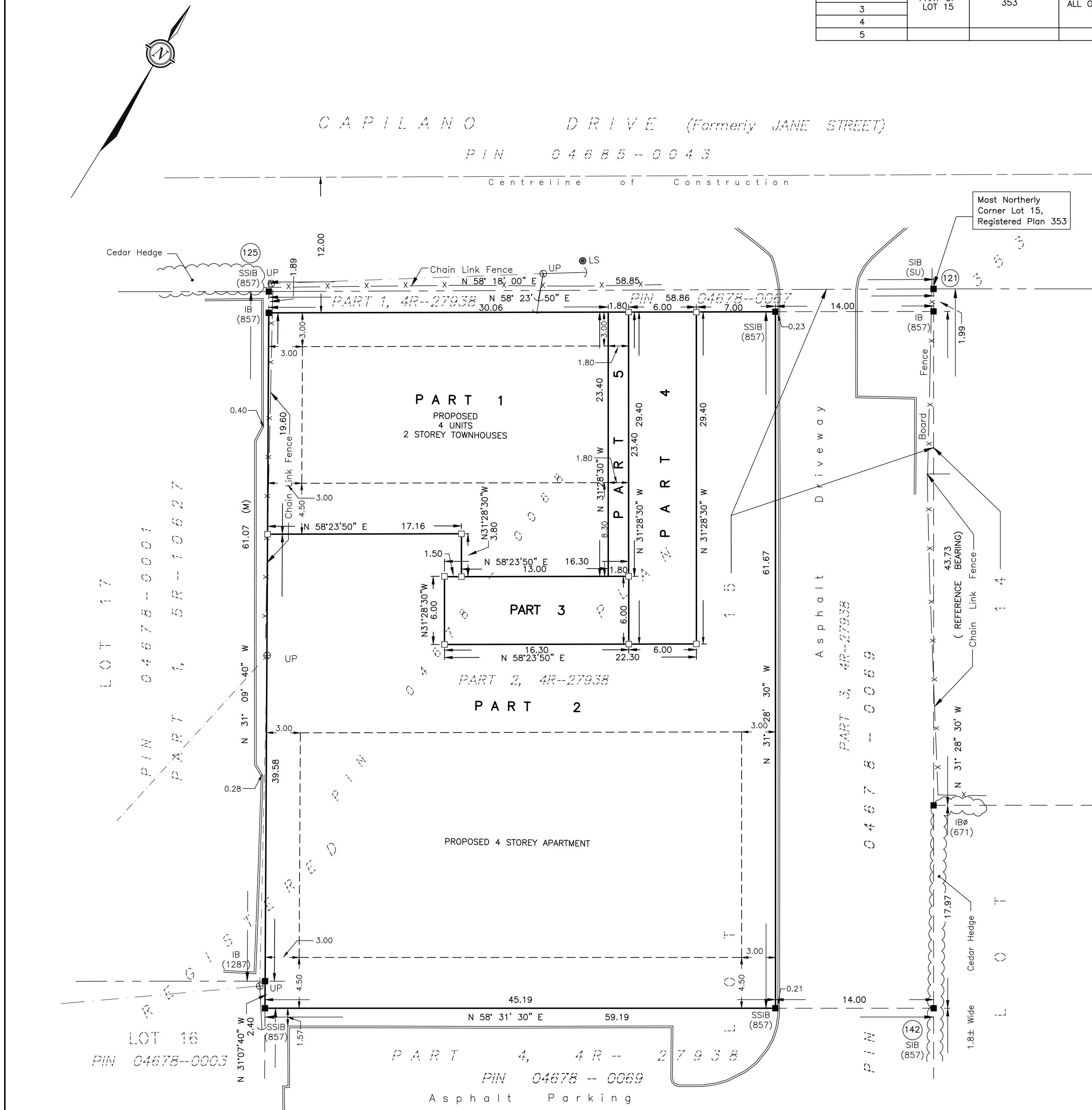
SURVEYOR'S CERTIFICATE

I CERTIFY THAT:
1. THIS SURVEY AND PLAN ARE CORRECT AND IN ACCORDANCE WITH THE SURVEYS ACT, THE SURVEYORS ACT, THE LAND TITLES ACT AND THE REGULATIONS MADE UNDER THEM.
2. THE SURVEY WAS COMPLETED ON ----.

DATE ----- JOHN H. GUTRI
ONTARIO LAND SURVEYOR

THIS PLAN OF SURVEY RELATES TO AOLS PLAN SUBMISSION FORM NUMBER ----.

Fairhall Moffatt & Woodland LIMITED ONTARIO LAND SURVEYORS Surveying and Land Information Services 100-600 TERRY FOX DRIVE, KANATA, ONTARIO K2L 4B6 TEL: (613) 591-2590 FAX: (613) 591-1495 www.fmw.on.ca	JOB No. AD22500
	REFERENCE No. 1 (d) - 353 NP
S:\JOBS\AD22500\DWGS\ ad225-rplan (RR)	



Most Northernly
Corner Lot 15,
Registered Plan 353

LOT 17
PIN 04678-0001
PART 1, 5R-10627

LOT 16
PIN 04678-0003

PART 4, 4R-27938
Asphalt Parking
PIN 04678-0069

Asphalt Driveway
PART 3, 4R-27938
PIN 04678-0069

LOT 14
PIN 04678-0068