

SURVEYOR'S REAL PROPERTY REPORT

PART 1 Plan of LOTS 735 AND 736 REGISTERED PLAN 320 CITY OF OTTAWA

Surveyed by Annis, O'Sullivan, Vollebakk Ltd.

Scale 1 : 200



Metric

DISTANCES AND COORDINATES SHOWN ON THIS PLAN ARE IN METRES AND CAN BE CONVERTED TO FEET BY DIVIDING BY 0.3048.

Surveyor's Certificate

- I CERTIFY THAT: 1. This survey and plan are correct and in accordance with the Surveys Act, the Surveyors Act and the Land Titles Act and the regulations made under them. 2. The survey was completed on the 23rd day of June, 2023.

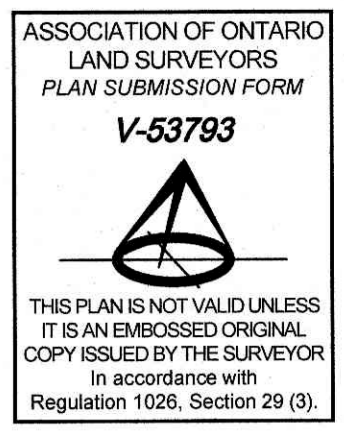
June 23, 2023 Date Andrew J. Broxham Ontario Land Surveyor

PART 2 THIS PLAN MUST BE READ IN CONJUNCTION WITH SURVEY REPORT DATED: JUNE 23, 2023

ANNIS, O'SULLIVAN, VOLLEBEKK LTD. grants to Andrew Clark Homes ("The Client"), their solicitors, mortgagees, and other related parties, permission to use original, signed, sealed copies of the Surveyor's Real Property Report in transactions involving The Client.

Notes & Legend

Table with 2 columns: Symbol and Denotes. Includes symbols for Survey Monument Planted, Standard Iron Bar, Short Standard Iron Bar, Iron Bar, Concrete Pin, Proportioned, Accepted, Witness, Measured, Annis, O'Sullivan, Vollebakk Ltd., Registered Plan 320, Registered Plan 4M-967, (671) Plan dated Feb 25, 1972, (725) Plan dated May 15, 1987, (990) Plan dated June 5, 1992, (725) Plan dated Nov 26, 1983, (990) Plan dated Feb 16, 1998, (AOG) Plan dated July 16, 1998, (AOG) Plan dated September 28, 2020, (725) field notes July 8, 1958 and Aug 28, 1958, Maintenance Hole (Storm Sewer), Maintenance Hole (Sanitary), Catch Basin Inlet, Concrete Retaining Wall, Location of Elevations, Top of Concrete Curb Elevation, Underground Storm Sewer, Underground Sanitary Sewer, Underground Water, Underground Gas, Property Line, Overhead Wires, Chain Link Fence, Board Fence, Centreline, Top of Grate, Invert, Handhole, Gate, Utility Pole, Catch Basin, Gas Meter, Air Conditioner, Water Valve.



SITE AREA = 418.5 m²

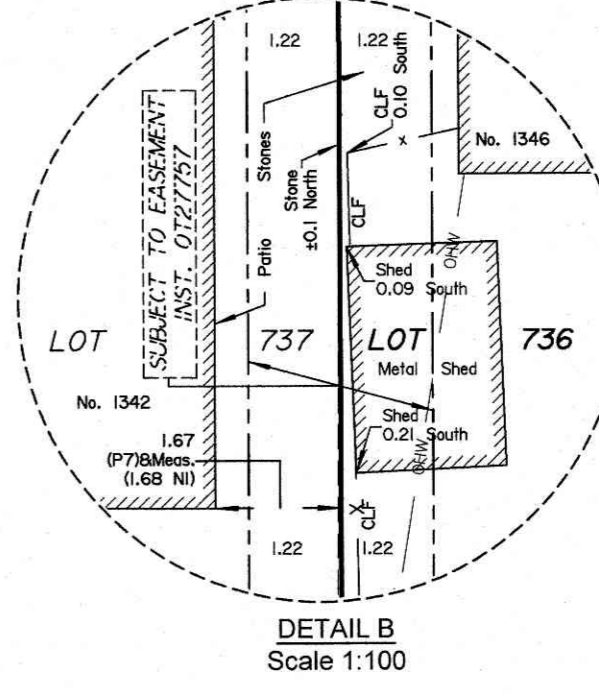
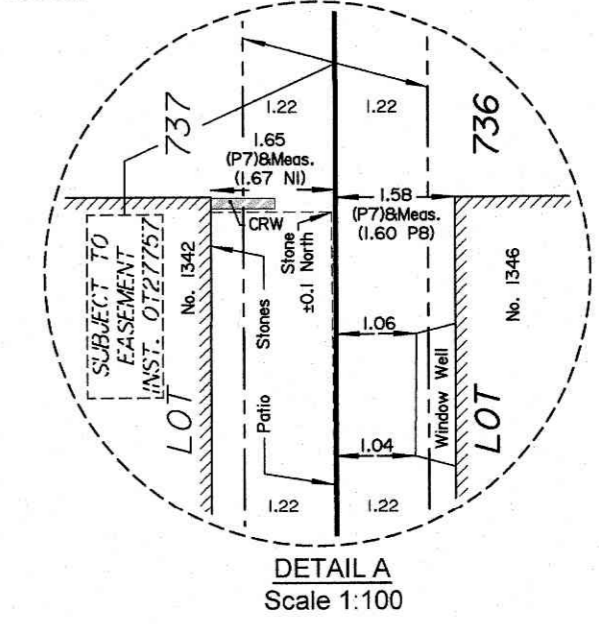
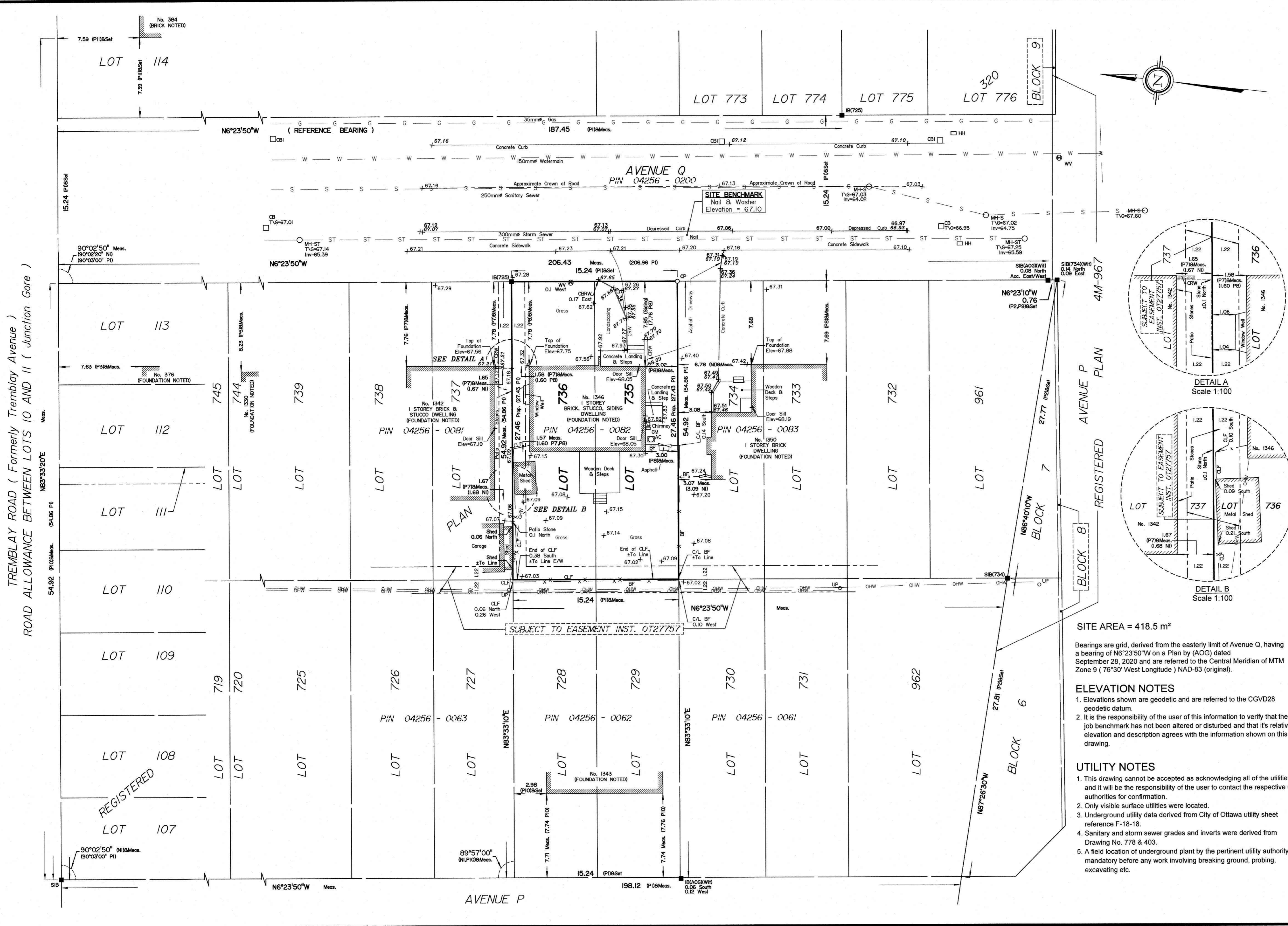
Bearings are grid, derived from the easterly limit of Avenue Q, having a bearing of N6°23'50"W on a Plan by (AOG) dated September 28, 2020 and are referred to the Central Meridian of MTM Zone 9 ( 76°30' West Longitude ) NAD-83 (original).

ELEVATION NOTES

- 1. Elevations shown are geodetic and are referred to the CGVD28 geodetic datum. 2. It is the responsibility of the user of this information to verify that the job benchmark has not been altered or disturbed and that its relative elevation and description agrees with the information shown on this drawing.

UTILITY NOTES

- 1. This drawing cannot be accepted as acknowledging all of the utilities and it will be the responsibility of the user to contact the respective utility authorities for confirmation. 2. Only visible surface utilities were located. 3. Underground utility data derived from City of Ottawa utility sheet reference F-18-18. 4. Sanitary and storm sewer grades and inverts were derived from Drawing No. 778 & 403. 5. A field location of underground plant by the pertinent utility authority is mandatory before any work involving breaking ground, probing, excavating etc.



ANNIS, O'SULLIVAN, VOLLEBEKK LTD. 14 Concourse Gate, Suite 500 Nepean, Ont. K2E 7S6 Phone: (613) 727-0850 / Fax: (613) 727-1079 Email: Nepean@aovltd.com Ontario Land Surveyors Job No. 23998-23 ACH Lts735&736 RP320 POS F DG