


Area sq. m	PART	LOT	CONCESSION	PIN
408.9	1		3	
3370.8	2	Part of Gore	3	
16599.1	3	Part of Gore	3	
444888.4	4	Part of Lot 10	2 (Old Survey)	All of 14540-0067
3624.7	5	Part of Gore & 2	3	
277.4	6	Part of Gore & 2	3	
257.9	7	Part of Lot 10	2 (Old Survey)	
308.6	8	Part of 2	3	

Parts 5 and 6 are subject to easement inst. CU16061

PLAN OF SURVEY OF  
**PART OF GORE LOT AND PART OF LOT 2 CONCESSION 3 AND PART OF LOT 10 CONCESSION 2 (Old Survey) (Geographic Township of Cumberland) CITY OF OTTAWA**

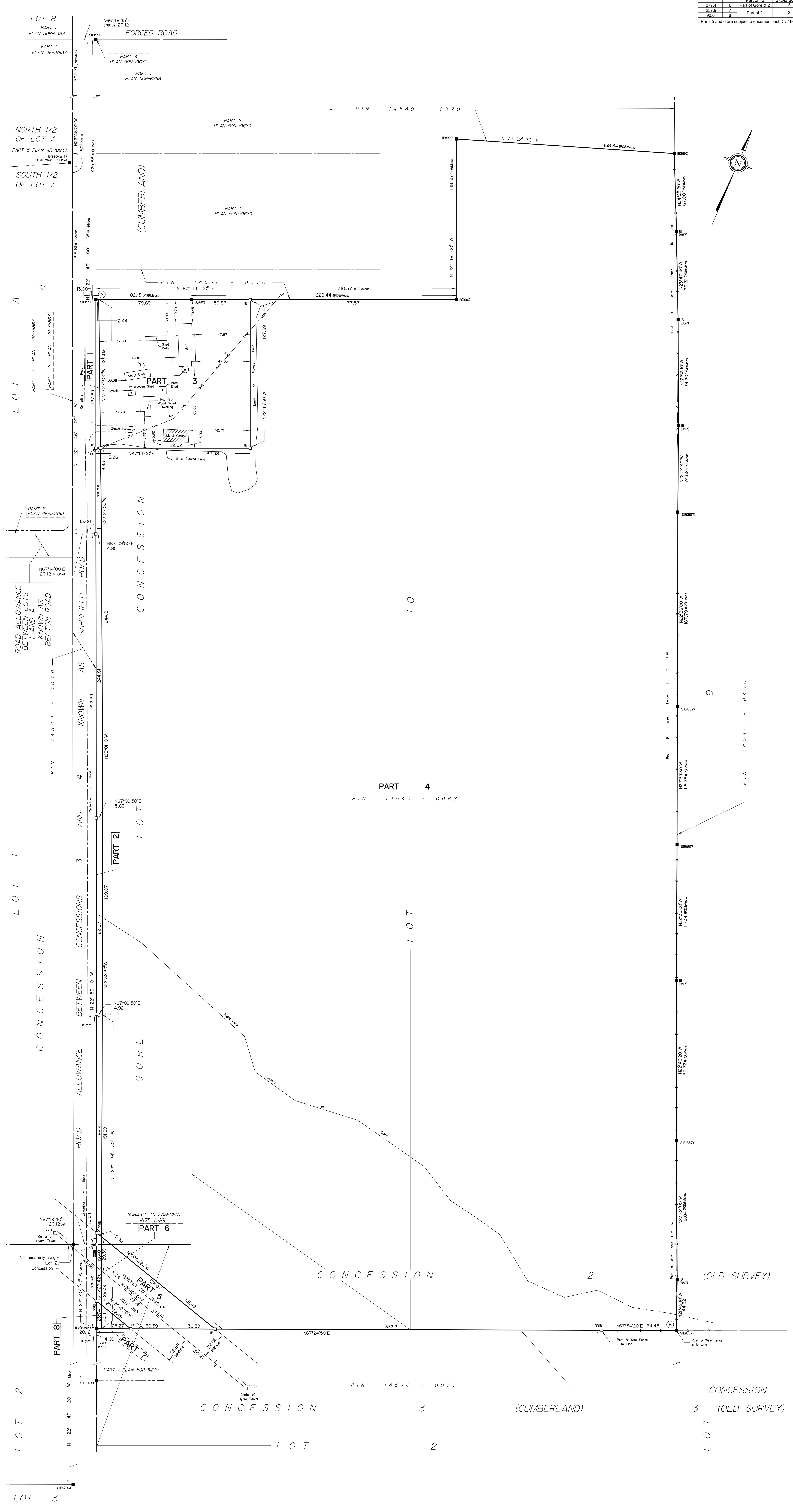
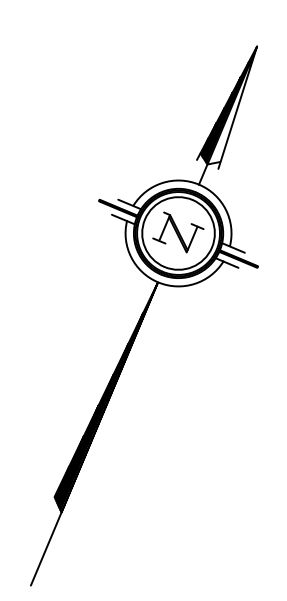
Surveyed by Annis, O'Sullivan, Vollebek Ltd.

Scale 1: 1250  
  
 The intended plot size of this plan is 1510 mm in width by 914 mm in height when plotted at a scale of 1:1250.

Metric  
 DISTANCES AND COORDINATES SHOWN ON THIS PLAN ARE IN METRES AND CAN BE CONVERTED TO FEET BY DIVIDING BY 0.3048.

Surveyor's Certificate  
 I CERTIFY THAT:  
 1. This survey and plan are correct and in accordance with the Survey Act, the Surveyors Act, the Land Titles Act and the regulations made under them.  
 2. The survey was completed on, 2023.  
 Date October 10, 2023  
 J. Cody Anderson  
 Ontario Land Surveyor

This plan of survey relates to AOLS Plan Submission form number: V-59837.



**Notes & Legend**

- Derives Survey Monument Planted
- Survey Monument Found
- SSB Standard Iron Bar
- SSIB Short Standard Iron Bar
- IB Iron Bar
- (WT) Witness
- (AOC) Annis, O'Sullivan, Vollebek Ltd.
- Meas. Measured
- (P1) Plan 50R-0203
- (P2) Plan 50R-0479
- (P3) Plan 50R-0503
- (D1) Inst. CU16061
- (D2) Inst. CU16061
- P&W Post & Wire Fence
- OUP Utility Pole
- OW Overhead Wires

Distances shown on this plan are ground distances and can be converted to grid distances by multiplying by the combined scale factor of 0.99994.

Bearings are grid, derived from Can-Net Real Time Network GPS observations and are referred to the Central Meridian of MTM Zone 9 NAD-83 (CSRS) (2010.0).

For bearing comparisons, a rotation of 1°40'00" counter-clockwise was applied to bearings on Plan (P1), a rotation of 0°45'40" counter-clockwise was applied to bearings on Plan (P3).

Coordinates are derived from Can-Net 2016 Real Time Network GPS observations and are referred to the Central Meridian of MTM Zone 9 NAD-83 (CSRS) (2010.0).

Coordinate values are to urban accuracy in accordance with O. Reg. 216/10.

- Point A Northing 5040058.79 Easting 392835.30
- Point B Northing 5039433.06 Easting 393640.31

Caution: Coordinates cannot, in themselves, be used to re-establish corners or boundaries shown on this plan.